



Pleached lime trees

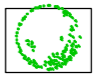
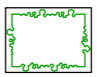
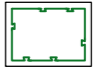





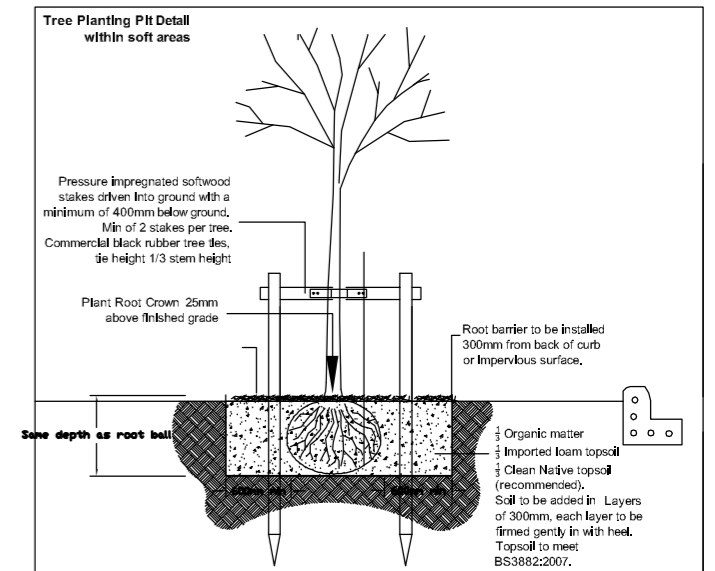
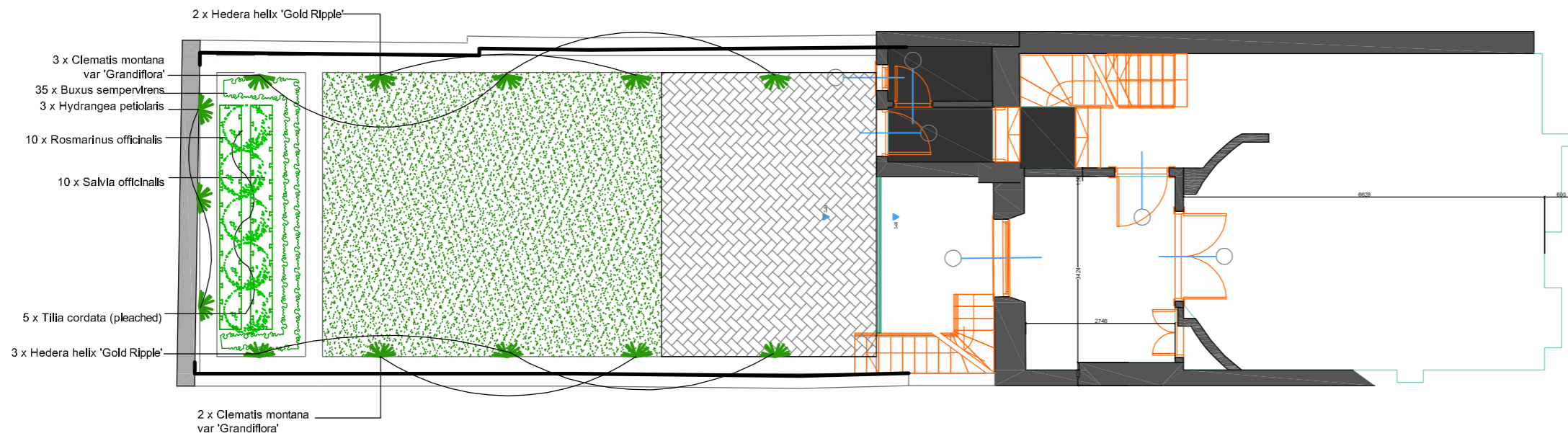
Sawn Yorkstone paving



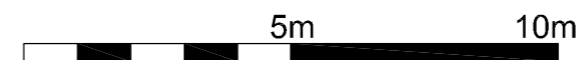
Hydrangea petiolaris

KEY

-  **Proposed Pleached Tree**  
Planted within soft landscape as per the tree detail
-  **Proposed Hedge**  
To be planted in double staggered lines, to a density of 4/m2, to receive 75mm bark mulch after planting operations
-  **Proposed Shrub Mix**  
To be planted in groups of 5-9no, to a density of 5/m2, to receive 75mm bark mulch after planting operations
-  **Paving**  
Sawn Yorkstone Paving
-  **Proposed climbing plants**  
To be trained up adjacent wall/ fence/ with galvanised wires and hook set 250mm apart with support canes removed prior to planting
-  **Proposed synthetic grassed areas**



	No.	Density	Height	Size	Habit	Standard	Clear ster	Pot size
<b>TREES</b>								
Tilia cordata	6	no	400-450cm	16/18cm	Pleached	Semi Mature	200cm	
<b>SHRUB</b>								
Rosemary officinalis	10	5m2						20-35L
Salvia var.	10	5m2						20-35L
<b>HEDGE</b>								
Buxus sempervirens	35	5m2	60-80cm					5L
<b>CLIMBER</b>								
Hedera helix 'Gold Ripple'	5	5m2						20-35L
Clematis montana var 'Grandiflora'	5	5m2						20-35L



NOTE:

 **Landmark Environment**  
20 Broadwick Street, London, W1F 8HT  
Tel: 0207 851 4544 Mobile: 07812 989928  
e-mail: info@landmarktrees.co.uk Web: www.landmarktrees.co.uk

Site: Doughty Street 1:200 @ A3  
Drawing Title: Landscape Plan Revision A Nov 2013