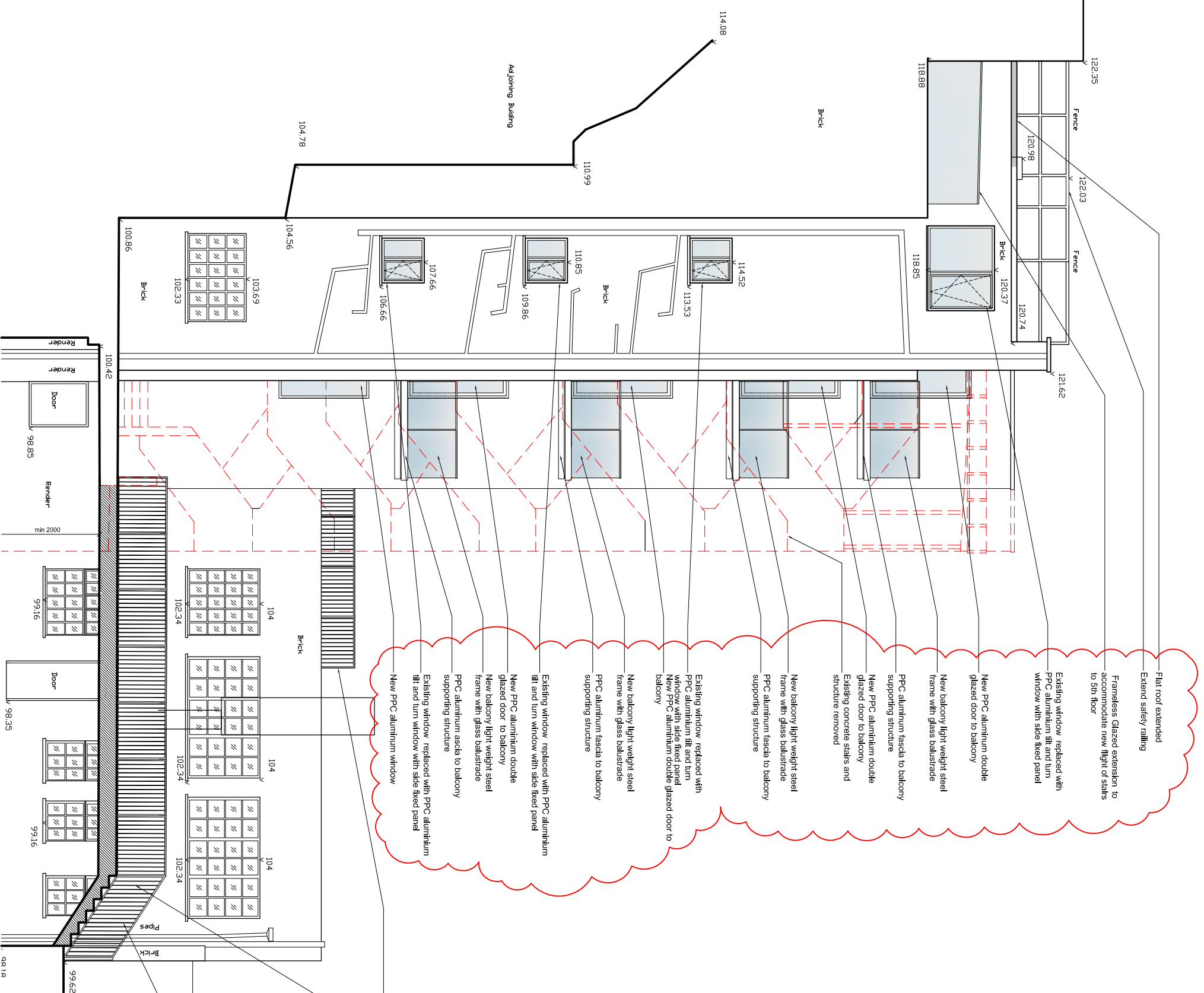


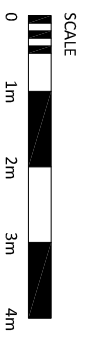
Note

Use figured dimensions only. All dimensions are to be checked on site and any discrepancies, errors or omissions are to be reported to the architect prior to commencement of works.



- Flat roof extended
- Extend safety railing
- Frameless Glazed extension to accommodate new flight of stairs to 5th floor
- Existing window replaced with PPC aluminium tilt and turn window with side fixed panel
- New PPC aluminium double glazed door to balcony
- New balcony light weight steel frame with glass balustrade
- PPC aluminium fascia to balcony supporting structure
- New PPC aluminium double glazed door to balcony
- Existing concrete stairs and structure removed
- New balcony light weight steel frame with glass balustrade
- PPC aluminium fascia to balcony supporting structure
- Existing window replaced with PPC aluminium tilt and turn window with side fixed panel
- New PPC aluminium double glazed door to balcony
- New balcony light weight steel frame with glass balustrade
- PPC aluminium fascia to balcony supporting structure
- Existing window replaced with PPC aluminium tilt and turn window with side fixed panel
- New PPC aluminium double glazed door to balcony

- New balustrade post and rail balustrade with timber infill panels
- New bridge with steps to negotiate difference in level with the car park.
- New galvanised steel framed fence and gates with slatted timber infill panels, to match height of the existing one.
- Existing boundary wall
- New galvanised steel framed balustrade with slatted timber infill panels



SCHEME DESIGN SUBJECT TO
STRUCTURAL ENGINEER /SERVICES ENGINEER,
& PLANNERS COMMENT

FOR PLANNING

| A | 02.10.14 | Door + windows to balcony revised | mb |

BB PARTNERSHIP LTD
CHARTERED ARCHITECTS
THE TRAFALGAR, 17 REMINGTON STREET, LONDON N1 8DH
TEL . 020 7336 8555 FAX . 020 7336 8777
e-mail . architect@bbpartnership.co.uk

Project	25-26 Hampstead High Street		date	Aug 14		scale	1:100@A3		drawn by	mb	
drawing	Side elevation as proposed		dwg. no	FGF - 289		rev	A	rev	rev	rev	rev

Side elevation towards No 24

1:100