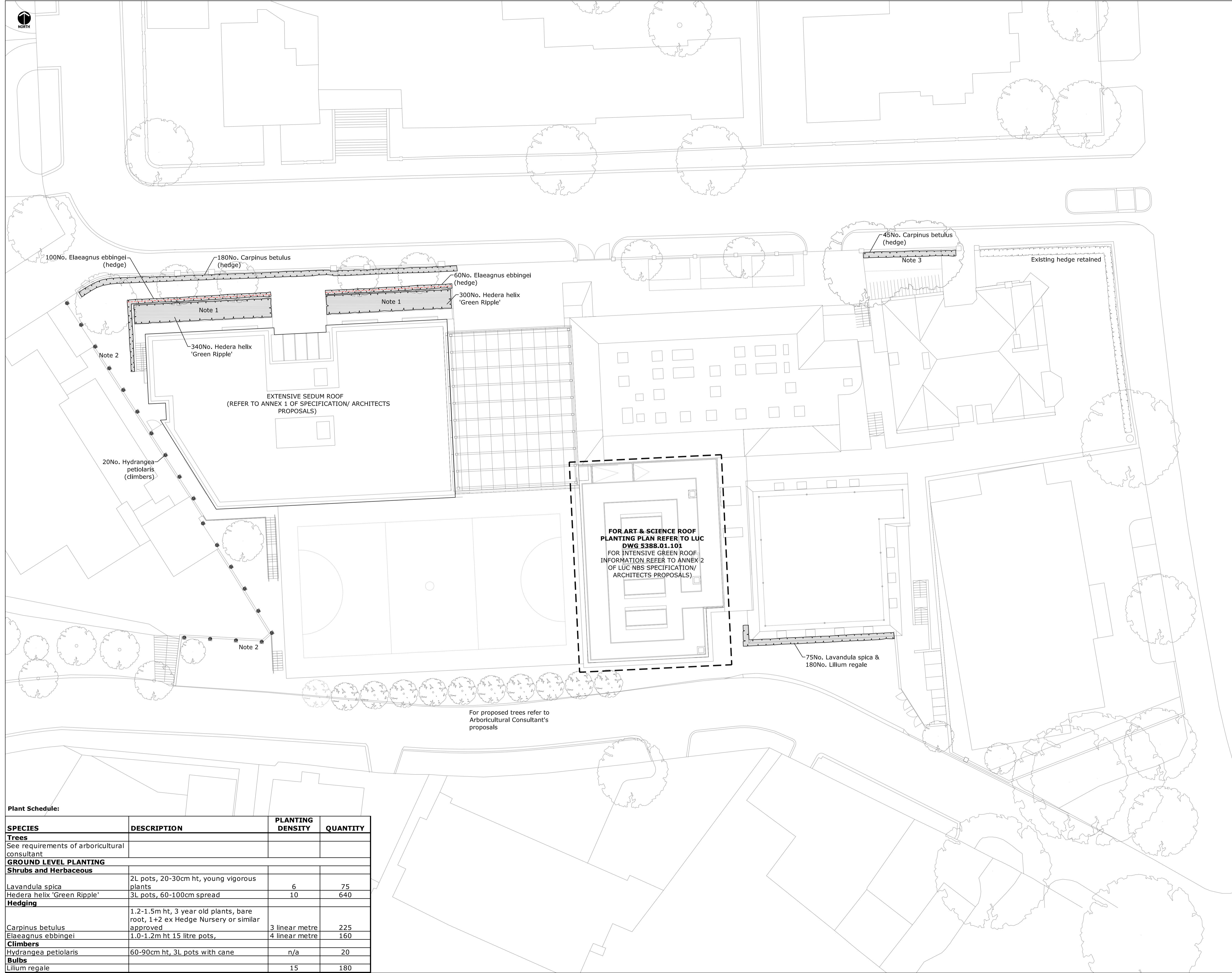




- Legend:**
- Existing trees
 - Proposed trees (refer to Arboricultural Consultant's proposals)
 - Proposed plant bed
 - Climber shrub in pit
 - Post and wire fence 0.9m ht pressure treated sw timber post and strained galvanised multi-strand wire fence (3 lines), Located centrally through proposed hedge.

- Notes:**
1. 45° (1:1) slope to be stabilised with 'Terram Geocell 25/10' 100mm deep cellular confinement geotextile, pegged/ anchored to slope to manufacturer's specification. Geocell to be filled with topsoil, no mulch required.
 2. Climber shrubs planted through localised openings in slab.
 3. Species of adjacent existing hedge to be confirmed prior to planting.



Plant Schedule:

SPECIES	DESCRIPTION	PLANTING DENSITY	QUANTITY
Trees			
See requirements of arboricultural consultant			
GROUND LEVEL PLANTING			
Shrubs and Herbaceous			
<i>Lavandula spica</i>	2L pots, 20-30cm ht, young vigorous plants	6	75
<i>Hedera helix</i> 'Green Ripple'	3L pots, 60-100cm spread	10	640
Hedging			
<i>Carpinus betulus</i>	1.2-1.5m ht, 3 year old plants, bare root, 1+2 ex Hedge Nursery or similar approved	3 linear metre	225
<i>Elaeagnus ebbingei</i>	1.0-1.2m ht 15 litre pots,	4 linear metre	160
Climbers			
<i>Hydrangea petiolaris</i>	60-90cm ht, 3L pots with cane	n/a	20
Bulbs			
<i>Lilium regale</i>		15	180

TO BE READ IN CONJUNCTION WITH LUC NBS SPECIFICATION DOCUMENT

Rev	Date	Issue Notes	ET	RH	RL
C	16.03.12	Stage E Issue	ET	RH	RL
B	14.03.12	Revised to latest Architect's roof plan & comments.	ET	RH	RL
A	22.02.12	First Issue	ET	RH	RL
100		Issue Notes			

LUC 43 Chalton Street
LONDON NW1 1JD
T: 020 7383 5784
F: 020 7383 4798
london@landuse.co.uk
www.landuse.co.uk

Project
SOUTH HAMPSTEAD HIGH SCHOOL

Client
SOUTH HAMPSTEAD HIGH SCHOOL

Title
SITE WIDE PLANTING PLAN

Scale 1:200@A1	Status INFORMATION
Job No. 5388.01	Drawing No. 100
	Issue C

Do not scale from this drawing
© Drawing & Design Copyright of Land Use Consultants