

E. NESBIT'S THE  
**RAILWAY  
CHILDREN**  
WRITTEN BY MIKE KENNY DIRECTED BY DAMIAN CRUDEN

The Railway Children - Planning Application  
Our Reference (D-TRC-KX-14-009)

## Carbon Reduction Policy

### Client

Theatre Tracks Limited  
2<sup>nd</sup> Floor  
80-81 St Martins Lane  
London, WC2N 4AA

### Development Management



Argent LLP  
4 Stable Street  
King's Cross  
London N1C 4AB

### Architect

**atomik  
architecture**

Atomik Architecture  
26 Shacklewell Ln  
London E8 2EZ

### Planning & Licensing Consultants



Entourage Live  
Studio 3.12, Chester House  
1 - 3 Brixton Road, Kennington  
London, SW9 6DE

## Introduction

This document has been written in support of an application for a temporary theatre venue which is proposed for Zone A, Goods Way, King's Cross Central, London N1C 4UR. The proposal is to install a temporary clearspan marquee structure to accommodate a theatre venue on the site at King's Cross to house a showing of the successful stage show, 'The Railway Children', produced by Theatre Tracks Limited.



The project is a time limited theatrical production, staged in a 967 seat temporary theatre auditorium for a fourteen month period from December 2014 until January 2016. The show is intrinsically linked to a temporary theatre structure which provides the custom designed auditorium space, and the ability to house the star of the show – a 44 tonne Victorian Steam Engine – for this reason the show cannot take place in a 'normal' theatre building.

The team are world leaders in providing tent-based theatrical shows and bring together experienced theatrical production and touring show specialists. The company has a history of working in temporary structures.

## Background

In the summer of 2008 The National Railway Museum played host to a unique and remarkable event – a spectacular stage production of E. Nesbit's classic children's book, *The Railway Children*. This adaptation, written by Mike Kenny, was produced in conjunction with the York Theatre Royal and after a sell out run and acclaimed reviews, returned in 2009.

In 2010 a consortium of West End Theatre producers acquired the rights in the production and subsequently brought it to London staging it at the former Eurostar Terminal in Waterloo Station where a 1,000 seat venue was built around the railway tracks with audiences seated on either side.

Following fourteen four star reviews and after winning a prestigious Olivier Award for "Best Entertainment" the production was hailed as London's theatrical sell out event of the year and ran for 28 weeks. After closing for works to be carried out by Network Rail on the station, the production was remounted in June 2011 where it ran for a further 18 week sell out run eventually closing in January 2012 due to the announcement of the abolition of BRB and Network Rail repossessing the building. A second production was also mounted in Canada, at Toronto's historic Roundhouse Park in 2011.

Written by Mike Kenny, directed by Damian Cruden, designed by Joanna Scotcher, lit by Richard G Jones, with music by Christopher Madin, and sound by Craig Vear, this extraordinary production perfectly captures both the tone and wonder in Nesbit's picaresque tale of three children, Bobby, Peter and Phyllis, whose lives change dramatically after their father is arrested on suspicion of espionage. They move from a large comfortable house in London to a poor cottage in rural Yorkshire where they befriend the local railway porter and embark on a magical journey of discovery, friendship and adventure.

Performed on moving platforms that glide on and off the real tracks and on the wooden platforms either side – the play is set within a country railway station in Yorkshire – providing the perfect stage for the show's star – a real, live period steam train ... and setting the scene for the final emotional return of the children's father. "I was in shameless emotional thrall to "The Railway Children," the York Theater Royal's inventive adaptation of E. Nesbit's much-loved novel from the early 1900s" **Ben Brantley, New York Times.**

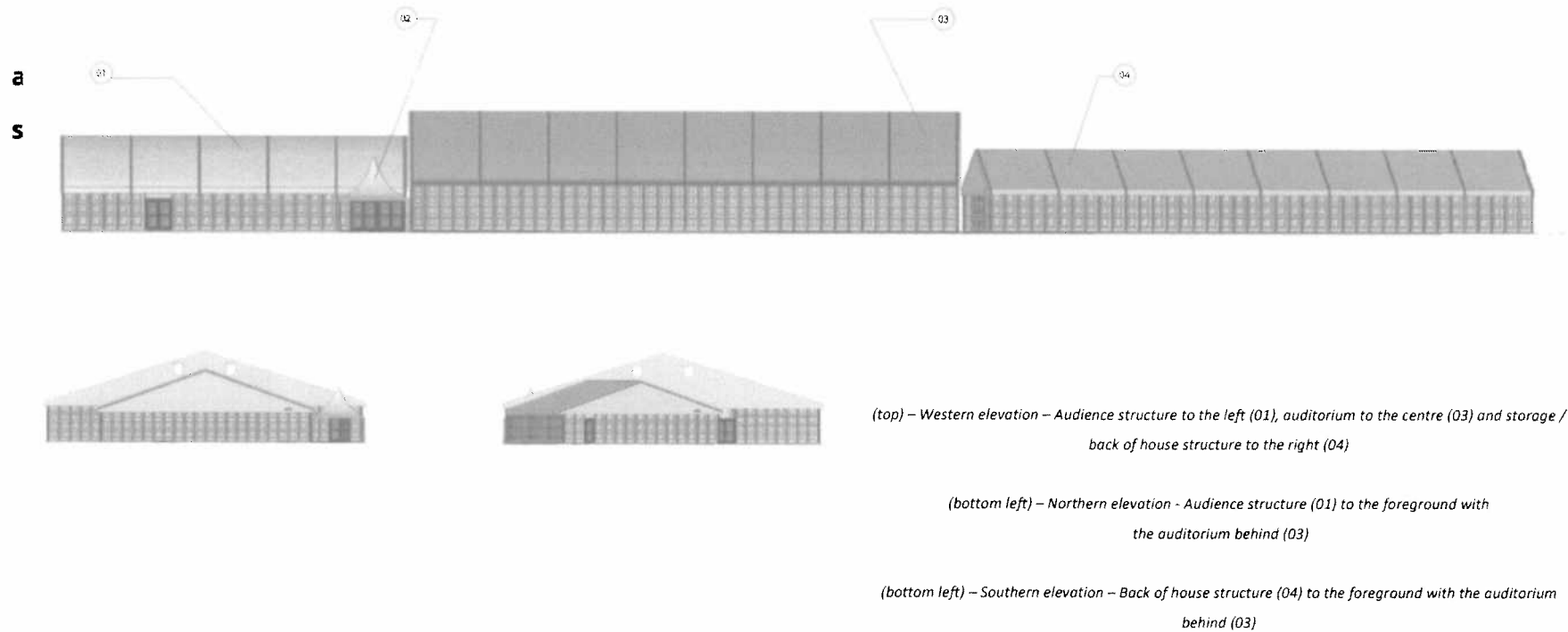
## About the Structure

The show will take place in a series of clearspan marquee structures to provide spaces for the auditorium, audience gathering and back of house storage and dressing rooms.

The requirements of the show, combined with a limited site footprint and quick build time have led the producers to European temporary structure specialists, DeBoer who, in conjunction with the designers, creative and production teams have created a venue which will successfully ensure a safe, reliable and exciting performance venue with no internal support columns, meaning every seat in the house has a great view of the action.

There are four structures used in the production of the show:

- 01) Audience bar/ circulation space
- 02) Entrance tent
- 03) Auditorium
- 04) Back of house and storage



## About Theatre Tracks Limited

We have been behind some of London's most innovative theatre productions over the last 5 years. Our company focuses on creating engaging and exciting theatre in unusual site-specific locations for a broad demographic. The amalgamation of drama and beauty, scale and intimacy, entertainment and fun are integral to what we are all about.

Our past successes have included a large-scale production of the much-loved children's classic *Peter Pan* staged in a 1,300 seat state of the art tent in Kensington Gardens where J.M Barrie wrote the original story; The Olivier award winning production of E. Nesbitt's *The Railway Children* staged on the platforms of the disused Eurostar terminal at Waterloo Station both in 2010 and 2011; Rupert Goold's restaging of *The Lion The Witch and The Wardrobe* outside Kensington Palace, again staged in a 1,500 seat state of the art tent.

With all of these productions we demonstrated that first class family theatre can be staged for an extended period in a cherished location, without detracting from the natural beauty of the setting whilst also attracting a broad demographic audience, many of whom that are new to both theatre and the local area.

### OLIVER ROYDS (PRODUCER)

Oliver is an Olivier award-winning, West End theatre producer. His theatre credits include the award winning production of *The Railway Children* at Waterloo Station and subsequently at The Roundhouse Park in Toronto. Stephen Daldry's award winning production of J.B Priestley's *An Inspector Calls* at both The Novello and The Wyndham's Theatre in the West End followed by two highly successful UK tours. Most recently he General Managed Rupert Goold's 2 million pound production of *The Lion The Witch and The Wardrobe* in Kensington Gardens in a bespoke, 1,500-seat purpose built, tent. In 2009 he general managed *Peter Pan* in Kensington Gardens and at the O2 Arena. He was General Manager of PW Productions from 2008 - 2012 for which he looked after their touring and West End productions including *The Woman In Black* and Arthur Miller's *Broken Glass*. In 2007, he produced a sell out run of James McLure's hilarious double bill *Lone Star and Private Wars* at The King's Head Theatre starring Shane Richie and James Jagger and was an associate producer on the UK Tour of Andrew Lloyd Webber's *Aspects of Love* starring David Essex. After graduating from Newcastle with a BA Hons in History, Oliver set up his own

production company B.O.S Productions Ltd in 2004. The following year he won the Shell Entrepreneur of the Year award and was the subject of a Channel Four documentary called '*The Producers*.' He has recently been appointed as a board member of The York Theatre Royal.

### SUE SCOTT DAVISON (PRODUCER)

Following over 25 years as an actress, Sue was awarded a Stage One New Producer's Bursary in 2004. She won a Meridian Theatre Interact Award for the development and production of Glyn Maxwell's *Liberty*, which she co-produced with Shakespeare's Globe in 2008, followed by a UK tour. This was the first Globe co-production, and indeed the first show to tour from the mainstage. Other productions include: The critically acclaimed and Laurence Olivier Award-winning *The Railway Children* at Waterloo Station (2010-12) and in Toronto, *After Troy* (Oxford Playhouse and Shaw, 2011), *Future Me* (Theatre 503) and UK tour 2007-09), *Two Way Mirror* (Courtyard, 2006) and *The Lifeblood* (Edinburgh Fringe and Riverside Studios, 2004-05). Most recently, she co-produced the acclaimed revival of *Our Boys* at The Duchess Theatre. As well as producing, Sue has been casting for over 10 years. Outside of her own projects above, she has also cast: *The Railway Children* at Waterloo Station, *To Kill A Mocking Bird* (The Touring Consortium), *The Mystery Cycle*, *A Funny Thing Happened On the Way To The Forum* and *Little Shop Of Horrors* (York Theatre Royal). She is currently casting a season of plays for Andy Jordan for the West End and UK touring.

### TRISTAN BAKER (PRODUCER)

Tristan is an award-winning theatre producer. He most recently produced E. Nesbit's classic *THE RAILWAY CHILDREN* live on the former Eurostar platforms at Waterloo Station with a real steam train. This production also ran for an extended season in Toronto. He also co-produces *FOOTLOOSE* The Musical which has so far completed five UK tours, two West End seasons at the Novello and Playhouse Theatres and its first international season in Johannesburg, South Africa. Tristan co-produced *NEVER FORGET* the musical based on the songs of TAKE THAT which completed two major UK national tours and a run at the Savoy Theatre in London's West End. His other productions include *Bad Girls* at the Garrick Theatre, the UK tour of the multi-award winning Broadway and West End production of *Kiss Me Kate*, a UK tour of *Love Shack* and the UK tour of the classic musical *Calamity Jane* and its subsequent season at the Shaftesbury Theatre in the West End.

## About the Venue

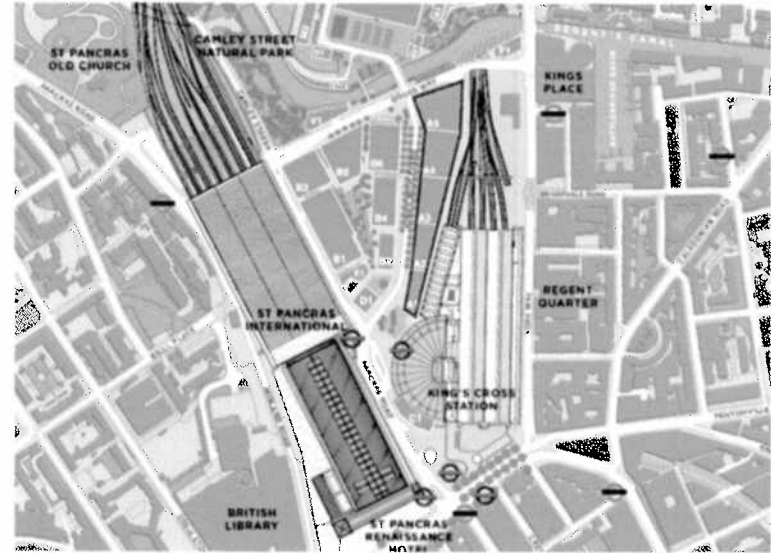
The Railway Children at King's Cross hopes to continue the successes seen by previous iterations of the show in York, London UK and Toronto Canada.

There will be seven show days per week. At King's Cross the schedule for build and de-rig, as well as the running of the show itself will be as follows:

- **Event build** December 2014
- **Rehearsals** December 2014
- **Live Shows** December 2014 – January 2016
- **Event de-rig** February 2016

## About the Location

The King's Cross Theatre will be located at Zone A, Goods Way, King's Cross Central, London N1C 4UR



The site is currently laid to gravel and is largely unused as it is awaiting redevelopment as part of the King's Cross Central scheme regeneration.

To the north of the site lies Goods Way (public highway), the Regent's Canal and then further developments including offices, shops, leisure spaces and residences which form the King's Cross Development site. To the west of the site is King's Boulevard (pedestrian walkway), with additional office space further to the West.

To the south of the site is additional empty land and the King's Cross/ St Pancras entranceway and to the east of the site are a number of railway lines and associated buildings / yards which feed King's Cross station.

## Overview

This application is for a time limited, temporary installation of the following equipment:

Four clearspan marquee structures containing theatre performance space, theatre seating, bar and refreshment areas, production spaces, offices, dressing rooms, storage and associated ancillary equipment:

- Temporary toilet facilities
- Temporary catering facilities
- Waste collection and recycling point
- Generation and Air Conditioning Plant Equipment
- Perimeter Fencing

The following dates will apply:

- Venue Opens: December 14<sup>th</sup> 2014
- Venue Closes: approx. January 31<sup>st</sup> 2016
- Derig Commences: approx. February 1<sup>st</sup> 2016
- Site Clear: approx. February 28<sup>th</sup> 2016

The show by numbers

- There will be approximately 976 people attending each show, and there will be seven show days per week.
- There will be approximately 50 technical, show and performance staff
- There will be approximately 50 front of house, bar and customer service staff

## The Purpose of this Document

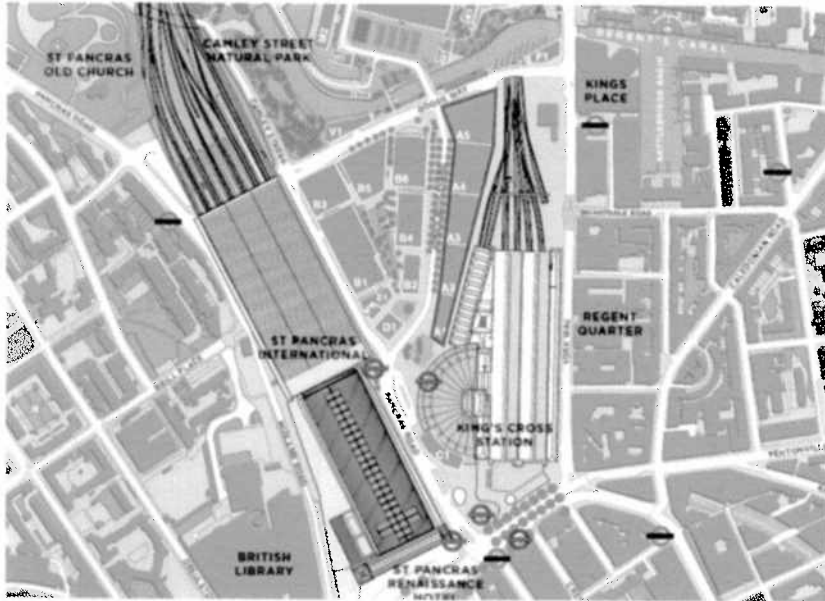
This document has been prepared on behalf of Theatre Tracks Limited for their proposed temporary theatre venue, which will play host to a theatrical production of The Railway Children. The purpose is to explain the company's desire and aims for the reduction of its carbon impact on the environment

This statement forms part of the application for planning permission for these facilities.

## Description

The Railway Children is a planned theatrical performance in a temporary venue for a fourteen month period from December 2014 until January 2016.

The development site is well located; there is good access to existing public transport services. The site is currently empty, and has not been used for events before.



The show is intrinsically linked to the marquee structure which provides the unique theatrical space to allow the use of the

star of the show, the 44tonne real steam engine which draws into the station as part of the show.

The Theatre Tracks Limited team have extensive experience of providing tent-based theatrical shows and bring together experienced theatrical production and outdoor event management specialists.

## Carbon Reduction Measures

The measures we are taking to reduce carbon emissions on this project include the avoidance of unnecessary journeys, prohibiting internal UK flights and single occupant car journeys.

- We plan for the tent, seating and other all items to be moved in artic journeys rather than multiple small vehicle journeys.
- We are seeking to use mains electricity for the site.
- We have halved the power use of the main power consuming equipment on site (where required) by specifying 500 watt halogen stage lighting.
- We will source all other suppliers using a preference for those with a carbon emissions reduction policy.
- We expect to incorporate further carbon emissions reducing elements into the project.
- The material imported to create the level base will be re-used on the site for the new build substructures and foundations, as well as the piling mats for the rigs. This will reduce the number of lorry movements to and from the site ultimately, as well as reducing the carbon footprint by re-using materials.

## Contacts and Further Information

### Planning Application

#### Development Management

Contact: Peter Runacres  
Email: peter.runacres@argentllp.co.uk

Office: **Argent LLP**, 4 Stable Street, King's Cross, London N1C 4AB  
Tel: +44 (0) 20 3664 0229

Website: www.argentllp.co.uk

#### Architect

Contact: Mike Oades  
Email: mo@atomikarchitecture.com

Office: **Atomik Architecture**, 26 Shacklewell Ln, London E8 2EZ  
Tel: +44 (0) 207 923 3091

Website: atomikarchitecture.com

#### Applicant:

**Theatre Tracks Limited**  
Company Number: 906891431  
Address: Registered Office - 2<sup>nd</sup> Floor, 80-81 St Martins Lane, London, WC2N 4AA

#### Trademarks

Entourage Live is a trademark of 5 Limited

#### Copyright

This application must not be reproduced in any way without prior written permission from Entourage Live.

© Copyright 2014 Entourage Live

Do not share this document - if you feel other people in your department / team should have access, please contact Entourage Live on the above numbers/email and individual copies will be provided.

#### Consultant:

Contact: Rob Haworth  
Email: rob.haworth@entouragelive.com  
Mobile: +44 (0) 7977 498170

Gloucester Office: The Lancaster Centre, Meteor Business Park, Gloucester GL2 9QL  
Tel: +44 (0) 1452 347830

London Office: Studio 3.12, Chester House, 1 - 3 Brixton Road,  
Kennington, London SW9 6DE  
Tel: +44 (0) 20 3137 6737

Website: www.entouragelive.com

#### Entourage Live

Rob Haworth  
rob.haworth@entouragelive.com  
+44 (0) 7977 498170

The Lancaster Centre, Meteor Business Park, Gloucester GL2 9QL  
+44 (0) 1452 347830

Studio 3.12, Chester House, 1 - 3 Brixton Road,  
Kennington, London SW9 6DE  
+44 (0) 20 3137 6737

www.entouragelive.com