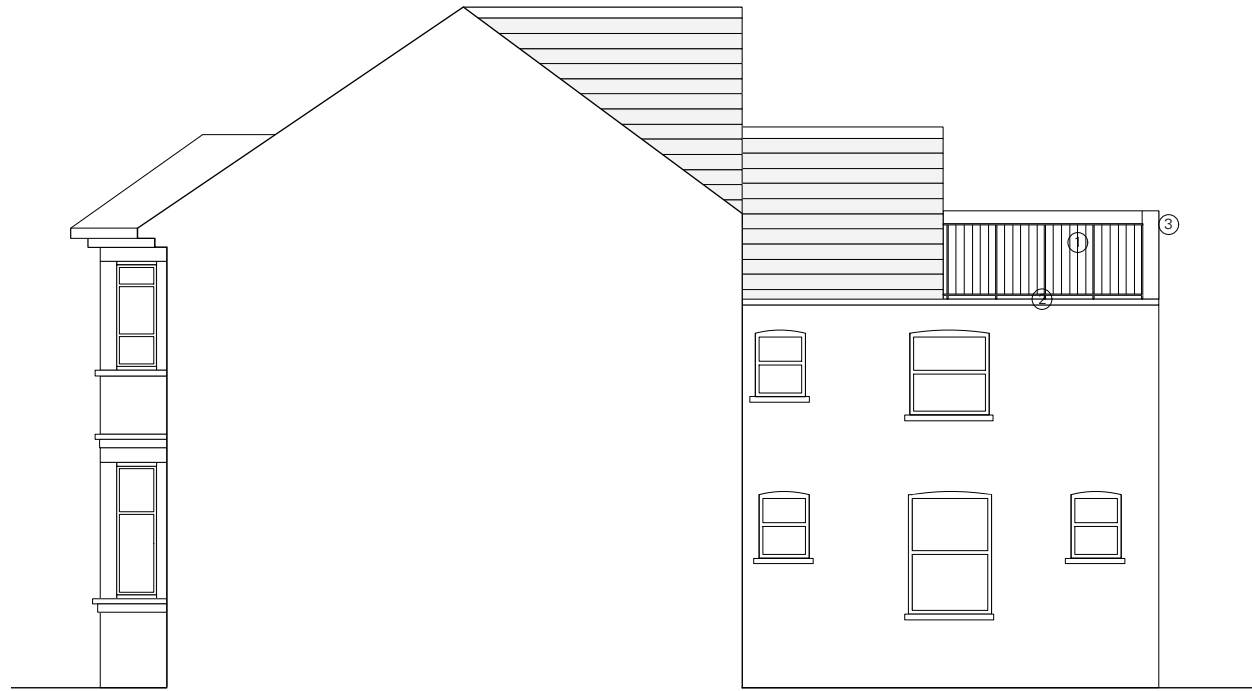
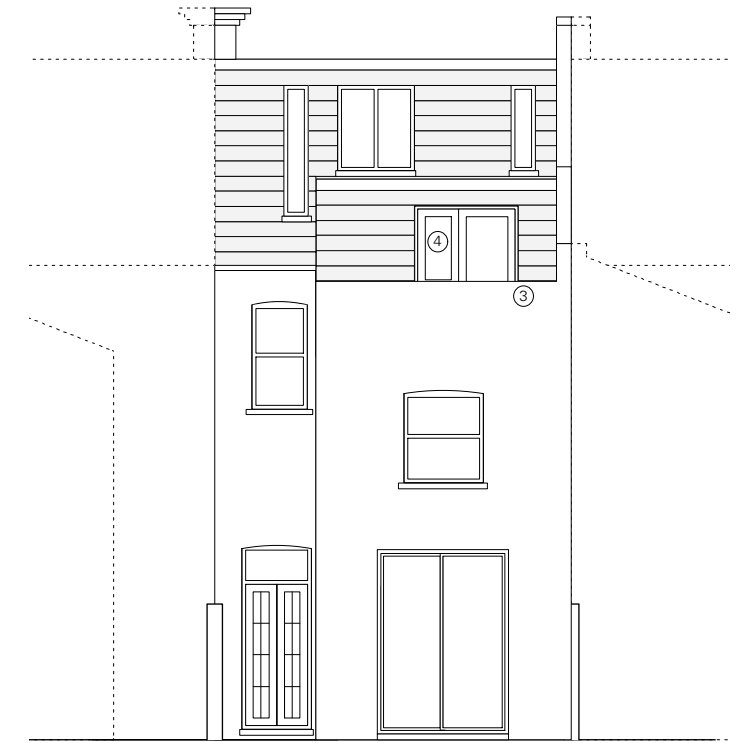




East Elevation



North Elevation



West Elevation

1. Metal balustrade (as built)
2. Flat roof (as built)
3. Levelled gable wall (as built)
4. French Doors
5. Proposed lockable balustrade. Openable for maintenance to flat roof only
6. French door changed to open inwards



revisions

Rev. A - Windows/ Doors amended	27.03.14
Rev. B - Notes amended	19.09.14
Rev. C - Rear Elevation amended	01.10.14

notes

all information contained in this drawing is sole copyright of hugh strange architects

project 71 Sumatra Road

drawing Proposed Elevations

job. no. 20 **dwg. no.** 06 **rev.** C **scale** 1:100@A3 **date** 25.03.14

issued for Information