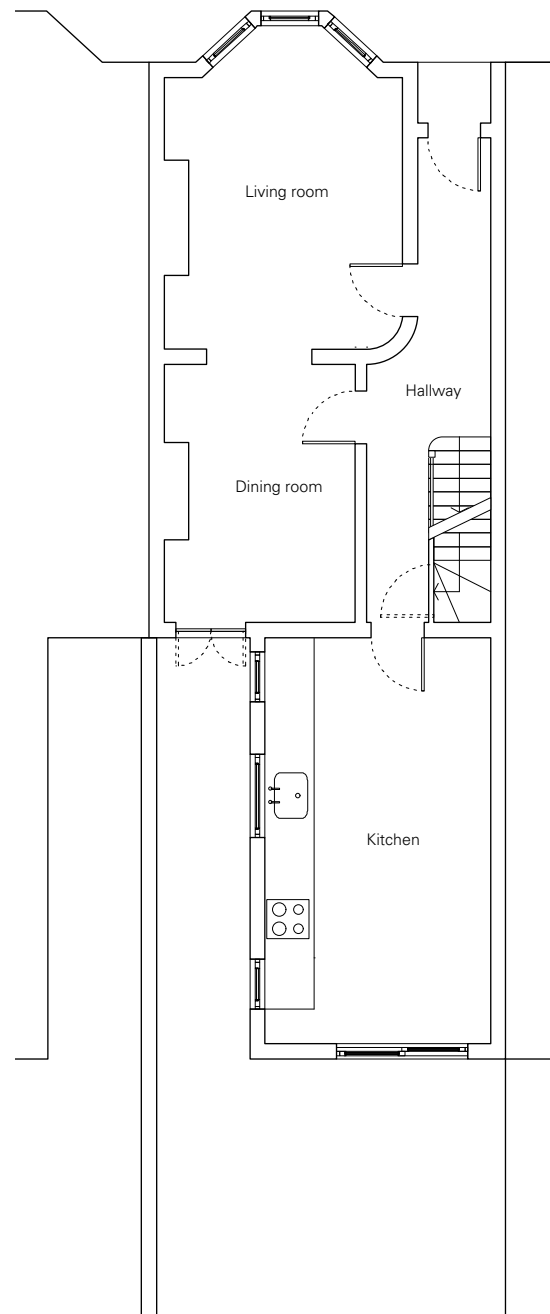
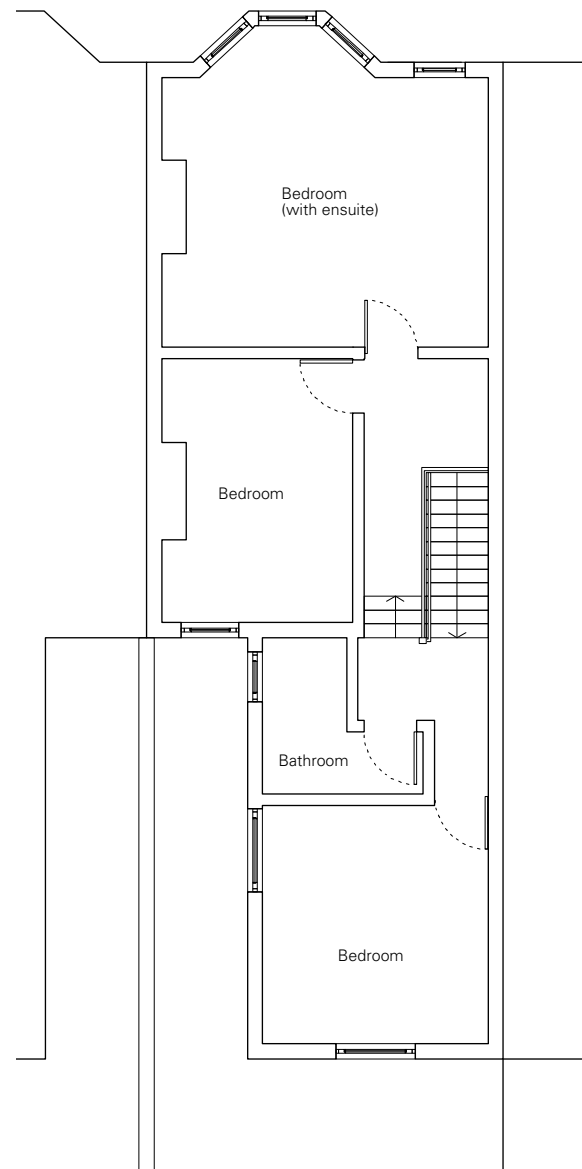


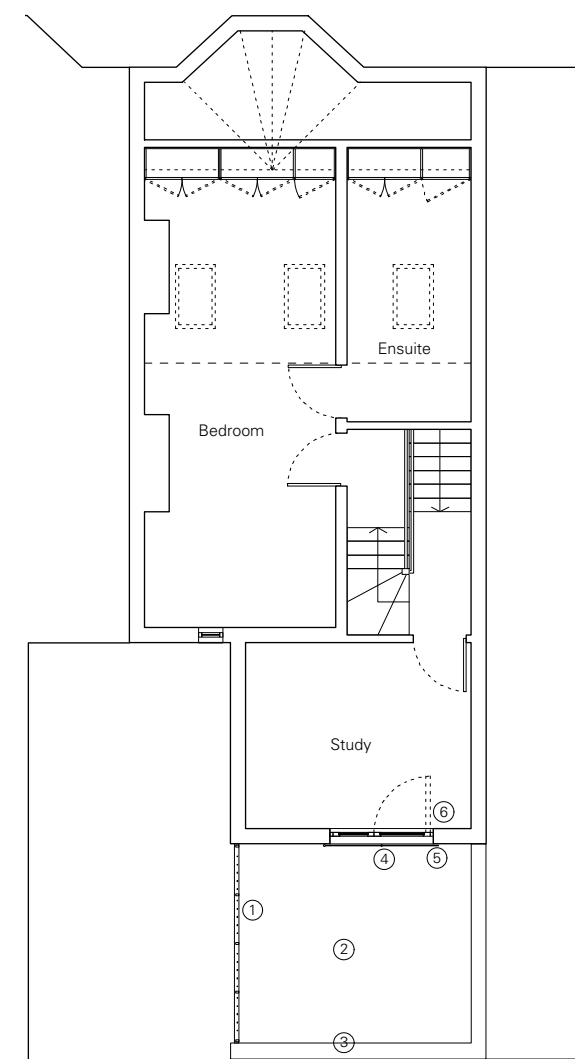
AA
20_07



Ground Floor Plan



First Floor Plan



Second Floor Plan

BB
20_07

BB
20_07

AA
20_07

- 1. Metal balustrade (as built)
- 2. Flat roof (as built)
- 3. Levelled gable wall (as built)
- 4. French Doors
- 5. Proposed lockable balustrade. Openable for maintenance to flat roof only
- 6. French door changed to open inwards



revisions

| | |
|---------------------------------|----------|
| Rev. A - Windows/ Doors amended | 27.03.14 |
| Rev. B - Notes amended | 19.09.14 |
| Rev. C - Notes amended | 01.10.14 |

notes

all information contained in this drawing is sole copyright of hugh strange architects

project 71 Sumatra Road

drawing Proposed Plans

job. no. 20 **dwg. no.** 05 **rev.** C **scale** 1:100@A3 **date** 25.03.14

issued for Information