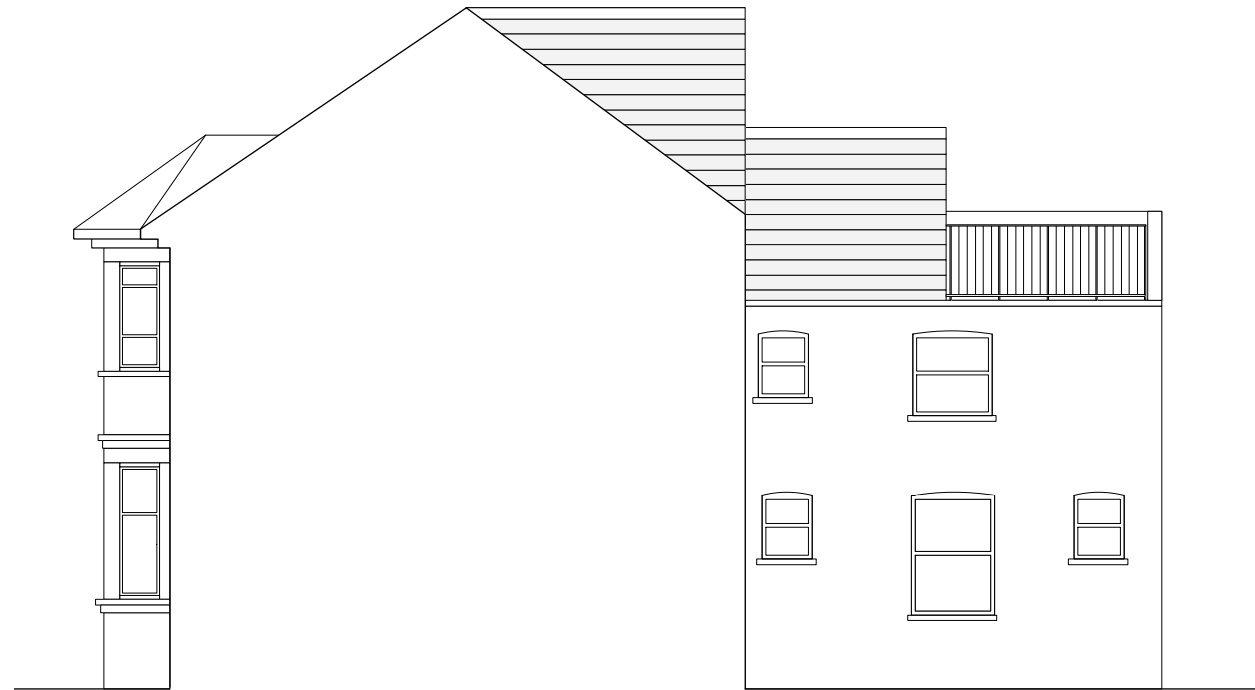




East Elevation



North Elevation



West Elevation



revisions

Rev. A - Windows/ Doors amended	27.03.14
Rev. B - Drawing name amended	19.09.14

notes

all information contained in this drawing is sole copyright of hugh strange architects

project 71 Sumatra Road

drawing Existing Elevations

job. no. 20 **dwg. no.** 03 **rev.** B **scale** 1:100@A3 **date** 25.03.14

issued for Information