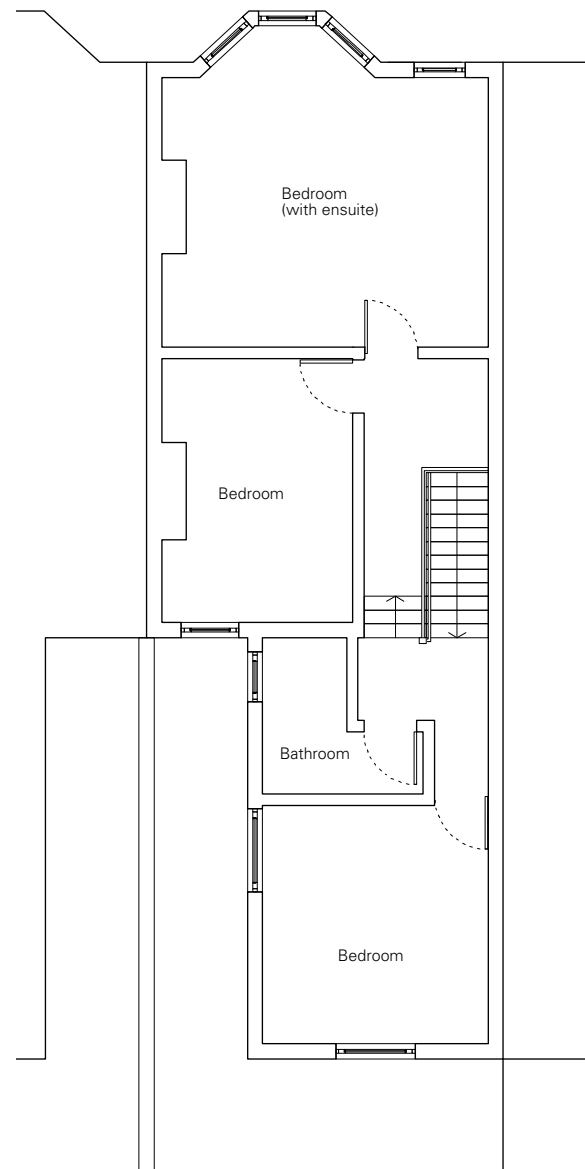
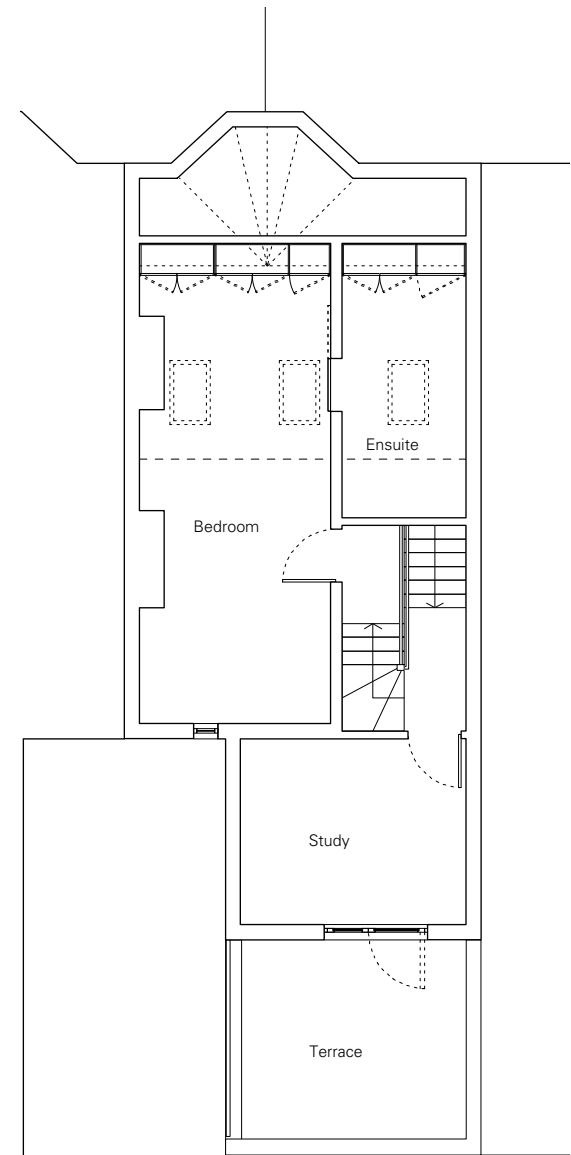


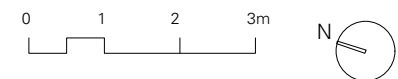
Ground Floor Plan



First Floor Plan



Second Floor Plan



revisions		
Rev. A - Windows/ Doors amended	27.03.14	
Rev. B - Drawing name amended	19.09.14	

notes

all information contained in this drawing is sole copyright of hugh strange architects

project	71 Sumatra Road				
drawing	Existing Plans				
job. no.	20	dwg. no.	02	rev. B	scale 1:100@A3 date 25.03.14
issued for	Information				