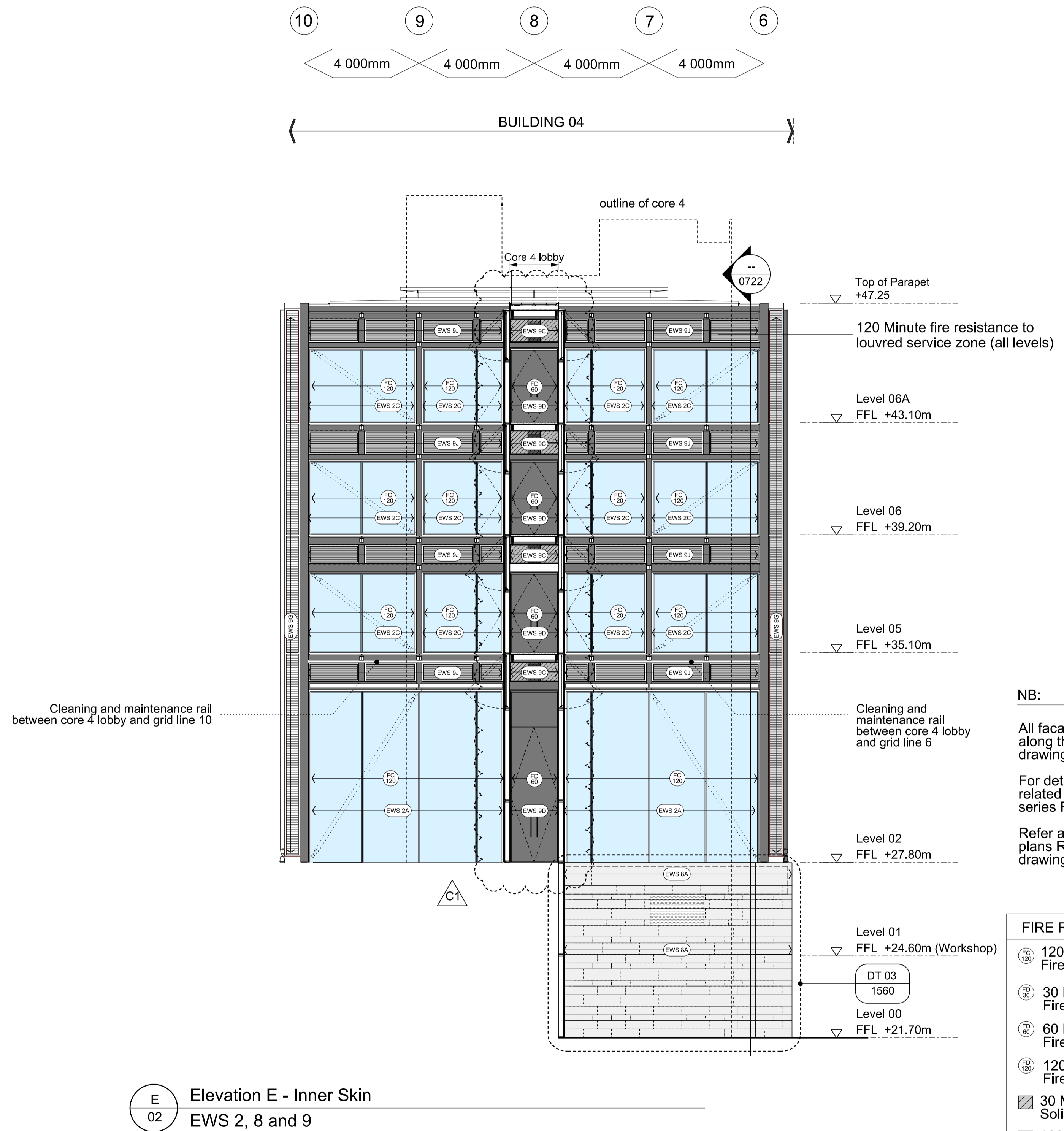
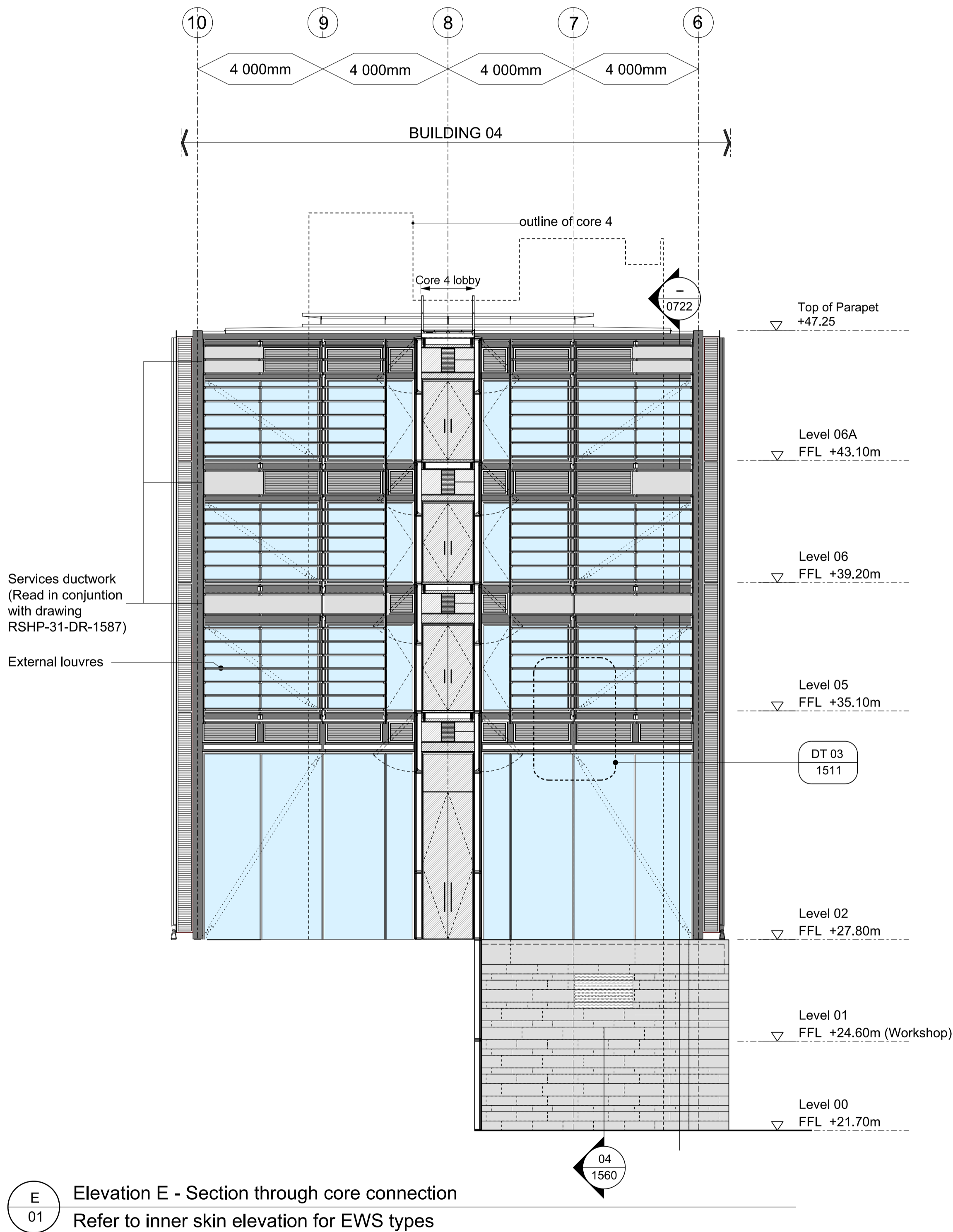
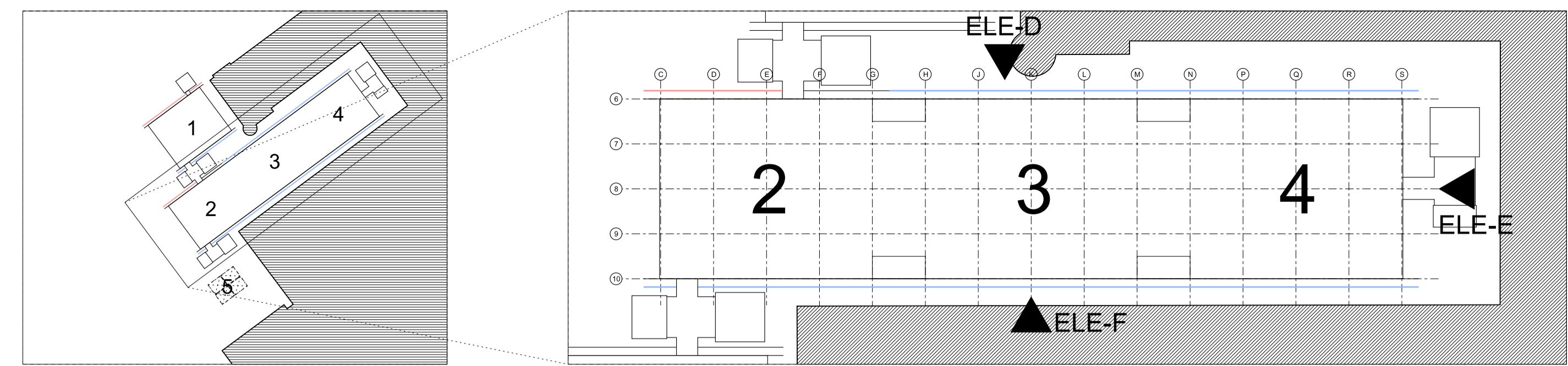


EWS KEY - For full descriptions refer to RSHP specification

- EWS 1 North and south cladding inner skin Levels 2-6A. H11.
- EWS 2 East and west cladding inner skin Levels 2-6A. H11.
- EWS 3 North cladding Levels 0-1. H11.
- EWS 4 Rooflights. H11.
- EWS 5 North and south cladding outer rainscreen. H92.
- EWS 6 Cores. H13.
- EWS 7 Glazed links between existing and proposed buildings. H13.
- EWS 8 Stone cladding to base of building. H51.
- EWS 9 Metal cladding, Levels 2-6A. H43. H92. L10.



NB:
 All facade ratings related to providing protection along the fire sector line are not included on these drawings.
 For details of locations and types of fire ratings related to sector separation refer to RSHP 500 series Fire drawings.
 Refer also to fire curtain descriptive elemental plans RSHP-67-DR-3200 - 3206 and detailed drawings RSHP-31-DR-1596 - 1597.

FIRE RATING LEGEND	
	120 Minutes Fire resistance. Fire curtains
	30 Minutes Fire resistance. Fire door
	60 Minutes Fire resistance. Fire door
	120 Minutes Fire resistance. Fire door
	30 Minutes Fire resistance. Solid panel
	120 Minutes Fire resistance. Solid panel
	120 Minutes Fire resistance. Structure Overcladding

E 01 Elevation E - Section through core connection
 Refer to inner skin elevation for EWS types

E 02 Elevation E - Inner Skin
 EWS 2, 8 and 9



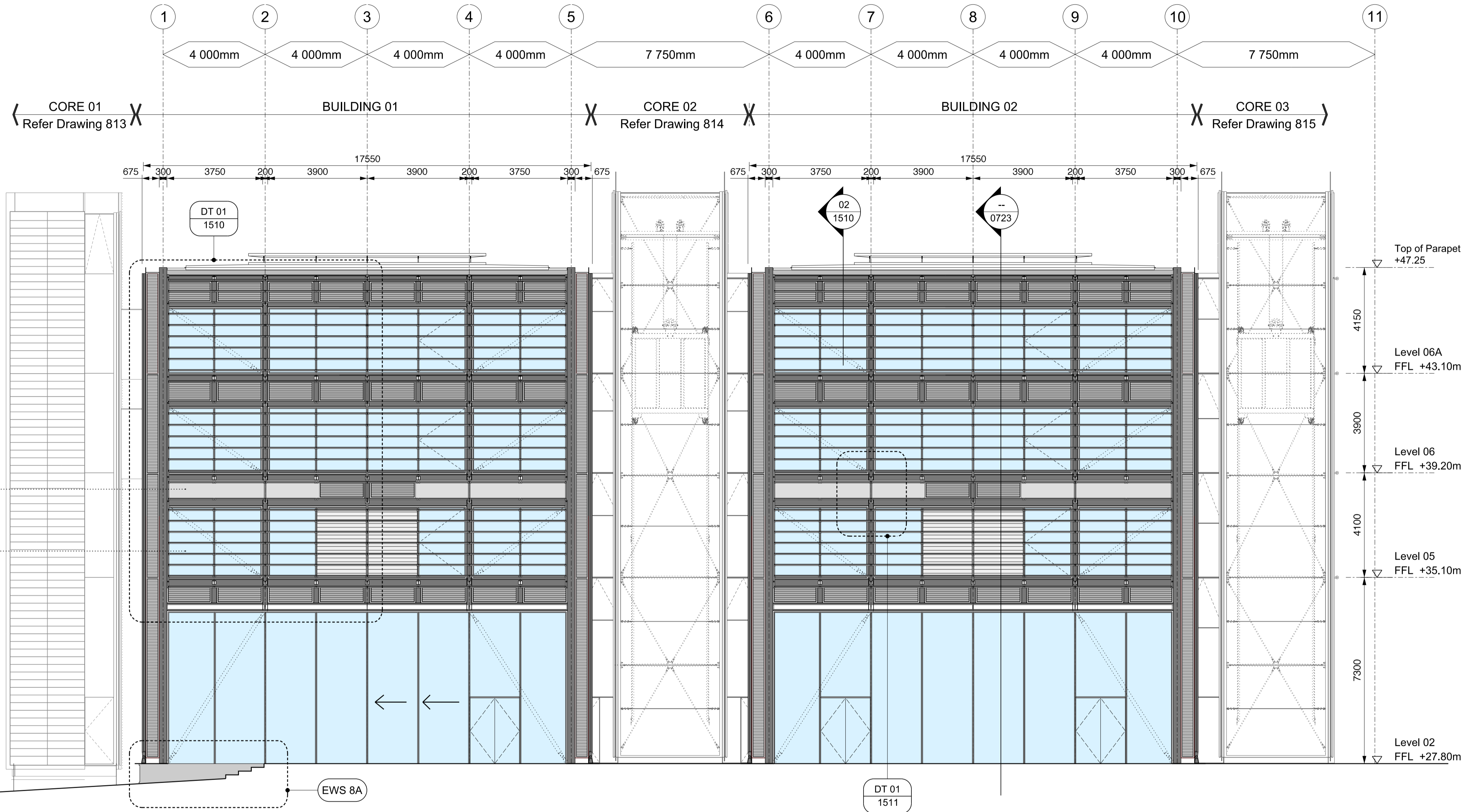
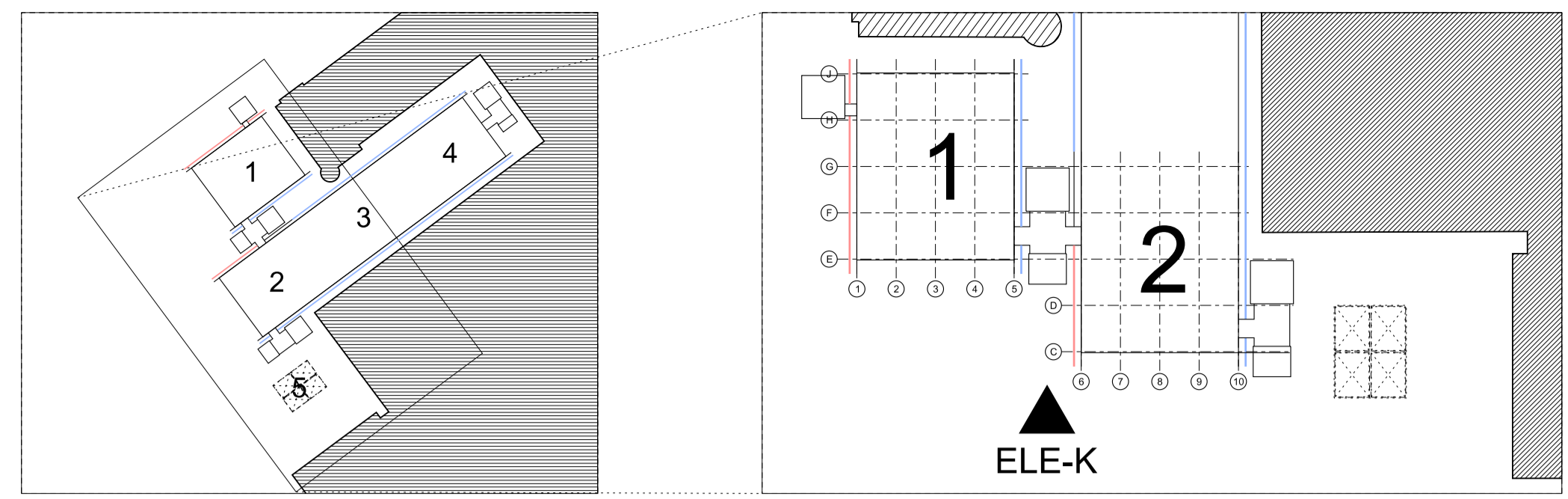
Revision	Date	Description
E	31.07.2010	Stage E Issue. EWS and cross references added. Elevation amended.
F	20.01.2011	EWS references amended. Elevation amended. Annotation amended. Fire rating legend amended. Stage E VE items included.
T1	17.02.2011	For Tender. Exhibition gallery large doors and ducts amended, low level stone louvres added and notes added. EWS key amended.
T2	04.03.2011	For Tender. EWS 8A stone set out amended
T3	14.03.2011	For Tender. Cross references added. Extent of cleaning rail added. Walkways and support updated to align with plan set out. Extent of high Level 2 fire curtain indicated
T4	08.07.2011	For Tender. Cleaning rail locations updated.
C1	01.11.2011	For Construction. Core lobby doors changed to solid and core cladding updated

Drawing Purpose		
CONSTRUCTION		
Drawn by	Checked by	Authorised by
Do not scale-off this drawing. RSHP take no responsibility for any dimensions obtained by measuring or scaling from this drawing and no reliance may be placed on such dimensions. If no dimension is given, it is the responsibility of the recipient to ascertain the dimension specifically from the Architect or by site measurement. The sizing of all structural and service elements must always be checked against the relevant engineers drawings. No reliance should be placed upon sizing information shown on this drawing.		

Notes:
 - Read in conjunction with:
 Facade scoping plans RSHP-99-DR-0820 - 0826
 Facade performance types RSHP-99-DR-0840 - 0855
 Descriptive elemental blind and fire curtain plans RSHP-67-DR-3200 - 3206
 Detailed sections RSHP-40-DR-0720 - 0724
 - For performance requirements and system descriptions refer to the RSHP Design Specification.

Project	5370 British Museum Rogers Stirk Harbour + Partners
Contact	Thames Wharf Rainville Road London W6 9HA tel: 020 7385 1235 fax: 020 7385 8409 email J5370@rsh-p.com www.rsh-p.com

Drawing Title © copyright Rogers Stirk Harbour + Partners, all rights reserved 2009	
Facade Scope Drawing Elevation E	
Scale @ A1 1:100	Drawing Number RSHP-99-DR-0805
Drawing Date 31-07-2009	Revision Date 01-11-2011
C1	



K
01 Elevation K - Louvre Elevation
Refer inner elevation for EWS types

EWS KEY - For full descriptions refer to RSHP specification

- | | |
|--|---|
| EWS 1 North and south cladding inner skin Levels 2-6A. H11. | EWS 6 Cores. H13. |
| EWS 2 East and west cladding inner skin Levels 2-6A. H11. | EWS 7 Glazed links between existing and proposed buildings. H13. |
| EWS 3 North cladding Levels 0-1. H11. | EWS 8 Stone cladding to base of building. H51. |
| EWS 4 Rooflights. H11. | EWS 9 Metal cladding, Levels 2-6A. H43. H92. L10. |
| EWS 5 North and south cladding outer rainscreen. H92. | |

Revision	Date	Description
E	31.07.2010	Stage E Issue. EWS and cross references added. Elevation amended.
F	20.01.2011	EWS references amended. Annotation amended. Fire rating legend amended. Stage E VE items included.
T1	17.02.2011	For Tender. Ducts on west facade amended. EWS key amended.
T2	14.03.2011	For Tender. Walkways and set out behind louvres updated to reflect plan and section set out
C1	14-05-2012	For Construction. No changes to drawing.

Drawing Purpose		
Construction		
Drawn by	Checked by	Authorised by
Do not scale-off this drawing. RSHP take no responsibility for any dimensions obtained by measuring or scaling from this drawing and no reliance may be placed on such dimensions. If no dimension is given, it is the responsibility of the recipient to ascertain the dimension specifically from the Architect or by site measurement. The sizing of all structural and service elements must always be checked against the relevant engineers drawings. No reliance should be placed upon sizing information shown on this drawing.		

Notes:
 - Read in conjunction with:
 Facade scoping plans RSHP-99-DR-0820 - 0826
 Facade performance types RSHP-99-DR-0840 - 0855
 Descriptive elemental blind and fire curtain plans RSHP-67-DR-3200 - 3206
 Detailed sections RSHP-40-DR-0720 - 0724
 - For performance requirements and system descriptions refer to the RSHP Design Specification.

Project	5370 British Museum Rogers Stirk Harbour + Partners	Drawing Title	© copyright Rogers Stirk Harbour + Partners. all rights reserved 2009 Facade Scope Drawing Elevation K - Outer Skin	
Contact	Thames Wharf Rainville Road London W6 9HA tel: 020 7385 1235 fax: 020 7385 8409 email J5370@rsh-p.com www.rsh-p.com	Scale @ A1	1:100	Drawing Number RSHP-99-DR-0811
		Drawing Date	31-07-2009	Revision Date 14-05-2012
				Revision C1