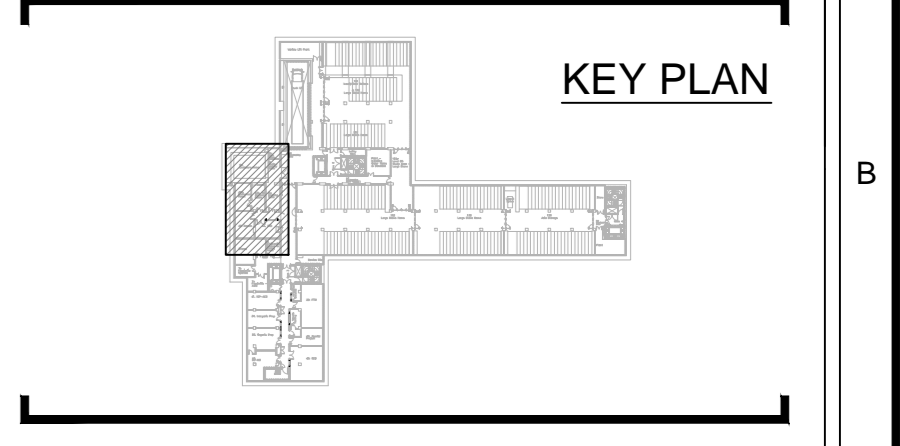


Michael J. Lonsdale Ltd. uses the copyright of this drawing which is supplied in confidence and which may not be used for any purpose other than that for which it is supplied and must not be reproduced without permission in writing from the client.

COMPUTER AIDED DRAWING - AVOID MANUAL MODIFICATION
THIS DRAWING MUST NOT BE SCALED.
ALL DIMENSIONS TO BE CHECKED ON SITE.

REFERENCE DRAWINGS	TITLE
ARUP-20-20-20-20-20	Mechanical Services Level B2 Layout Sheet B
ARUP-20-20-20-20-20	Mechanical Services Level B2 Layout Sheet C
ARUP-20-20-20-20-20	General Air Handling Schematic, Basement Building 1, 2, 3 & 4
ARUP-20-20-20-20-20	Fume Extract Schematic



- NOTES:
- Access To Ductwork For Cleaning & Maintenance To Be In Accordance With Mechanical Specification Document
 - Flexible Connections To Have Maximum Deviation Of 30° Unless Otherwise Stated
 - Do Not Scale From This Drawing
 - All Dimensions Given In Millimetres Unless Otherwise Stated
 - Level As Noted Indicates Installation Height To Underside Of Rectangular Ductwork And Centre-Line Of Circular Ductwork
 - Ductwork Access Hatches And Inspection Doors For Internal Cleanliness Of System Are To Be Advised By Duct Cleaning Specialist
 - All Invert Levels Are Taken From A Finished Floor Level Of 14225mm
 - Ductwork Contractor To Ensure Access Panels For Cleaning Meet The Requirements Given In Arup's Specification ARUP-01-SP-0002

Legends:

FIA	- From Above
FB	- From Below
T/A	- To Above
T/B	- To Below
HL	- High Level
LL	- Low Level
FTT	- Flat Top Transformer
FBT	- Flat Bottom Transformer
OFT	- Offset Transformer
EQ	- Equal Transformer
VCD	- Variable Control Damper
SD	- Single Blade Damper
FD	- Fire Damper
SCD	- Smoke Damper
AP1	- Access Panel - Type 1
AP2	- Access Panel - Type 2
RS	- Removable Section
CE	- Cap End
SS	- Stainless Steel
HB	- Heater Battery

Fire Rated Ductwork
300°C at 1 Hour

REV	DATE	REVISION	APPROVED	CHKD
C2	05/03/13	Revised Corridor Mechanical, MSD2518 & MSD2519	BTJ	
C1	16/01/12	AHU Ductwork Connections Amended Amended To Design Team Comments	BTJ	
REV	02/04/12	Revised For Approval	BTJ	CHK

CONSULTANT:
ARUP
15 Fenny Street
London
W1T 4EQ
Tel: +44(0)20 763 81331
Fax: +44(0)20 758 59264

ARCHITECT:
Rogers Stirk Harbour & Partners
Thames Wharf
Ranville Road
London
W6 8EP
Tel: +44(0)20 738 52326
Fax: +44(0)20 738 58409

CLIENT:
The British Museum
Great Russell Street
London
WC1B 3DG

PROJECT:
**British Museum
World Conservation And
Exhibition Centre**

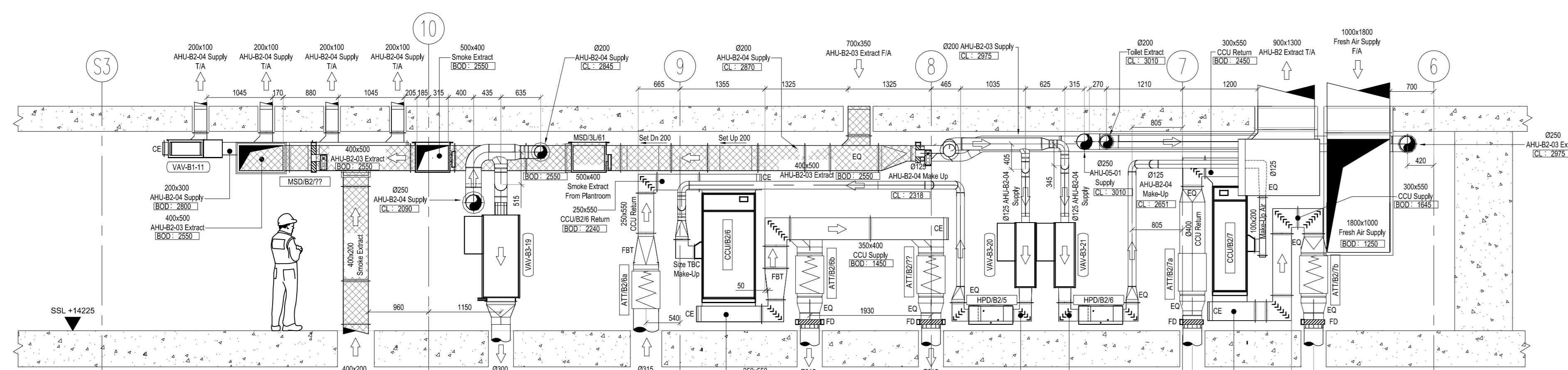
STATUS:
CONSTRUCTION

DRAWING TITLE:
**Ductwork Layout
Basement Level B2 - Gridlines 5-33
Building Five Sheet 1 Of 2**

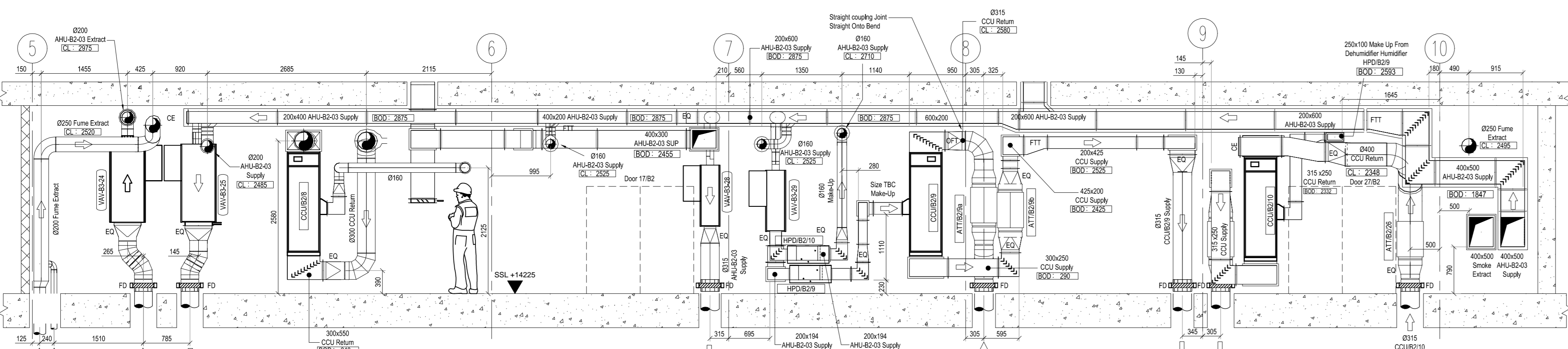
DESIGNED BY:
Michael J. Lonsdale Ltd.
Unit 1 Langley Quays
Waterside Drive
Langley, Slough
Berkshire, SL3 6JY
Tel: (01753) 588750
Fax: (01753) 549085

Discipline	Project Phase
Mechanical	1
Designing Originator	Originator's Job No. 6000
Checked By: Michael J. Lonsdale	Drawn By: BTJ
Checked By: B. Simpson	Drawn Date: 23/01/12
Approved By:	Scale: 1:50 @ A0
	Sign Offs Reference: Stry Key Plan

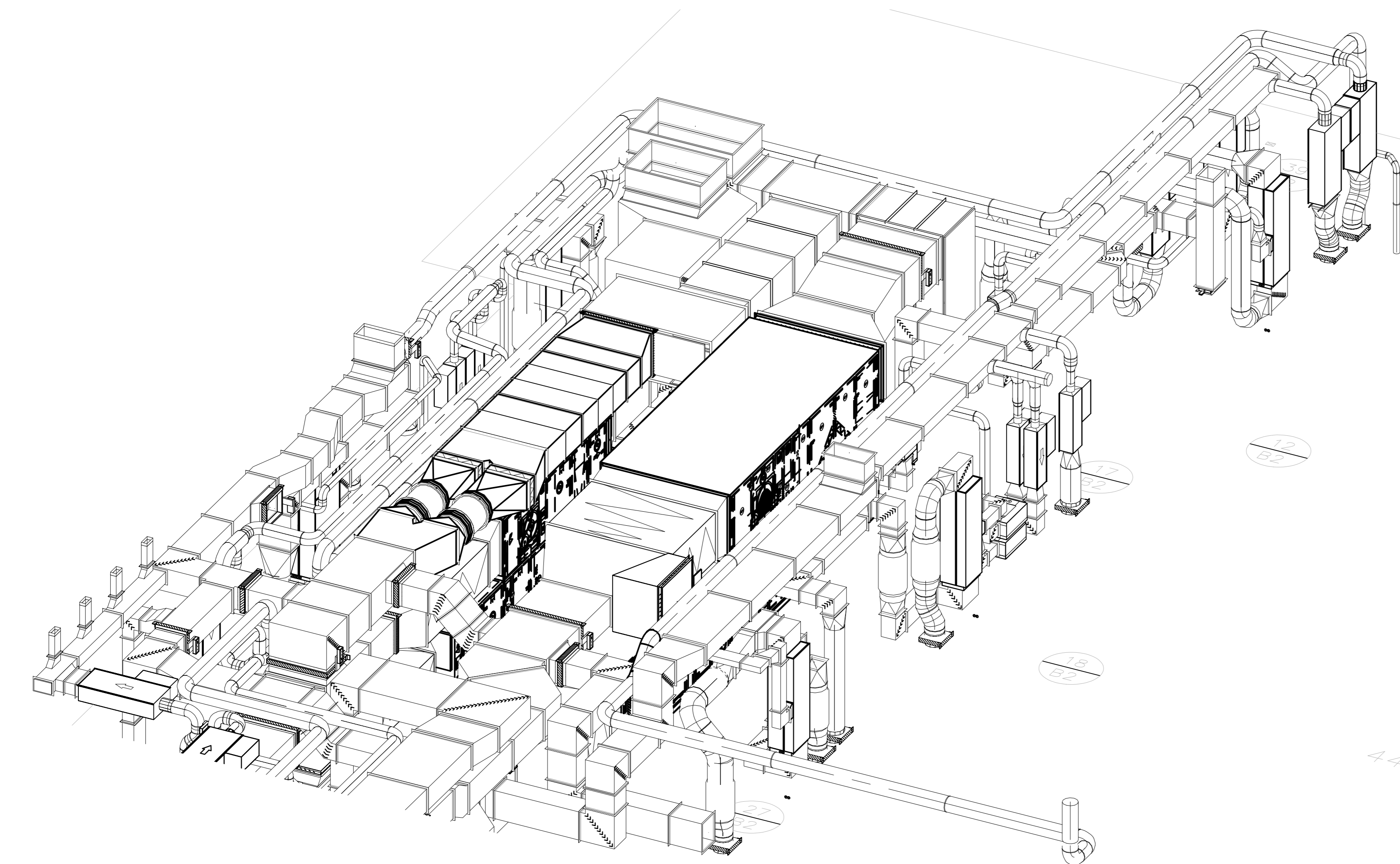
Drawing No: **6000-DR-DW-B2-04-1** Revision: **C2**



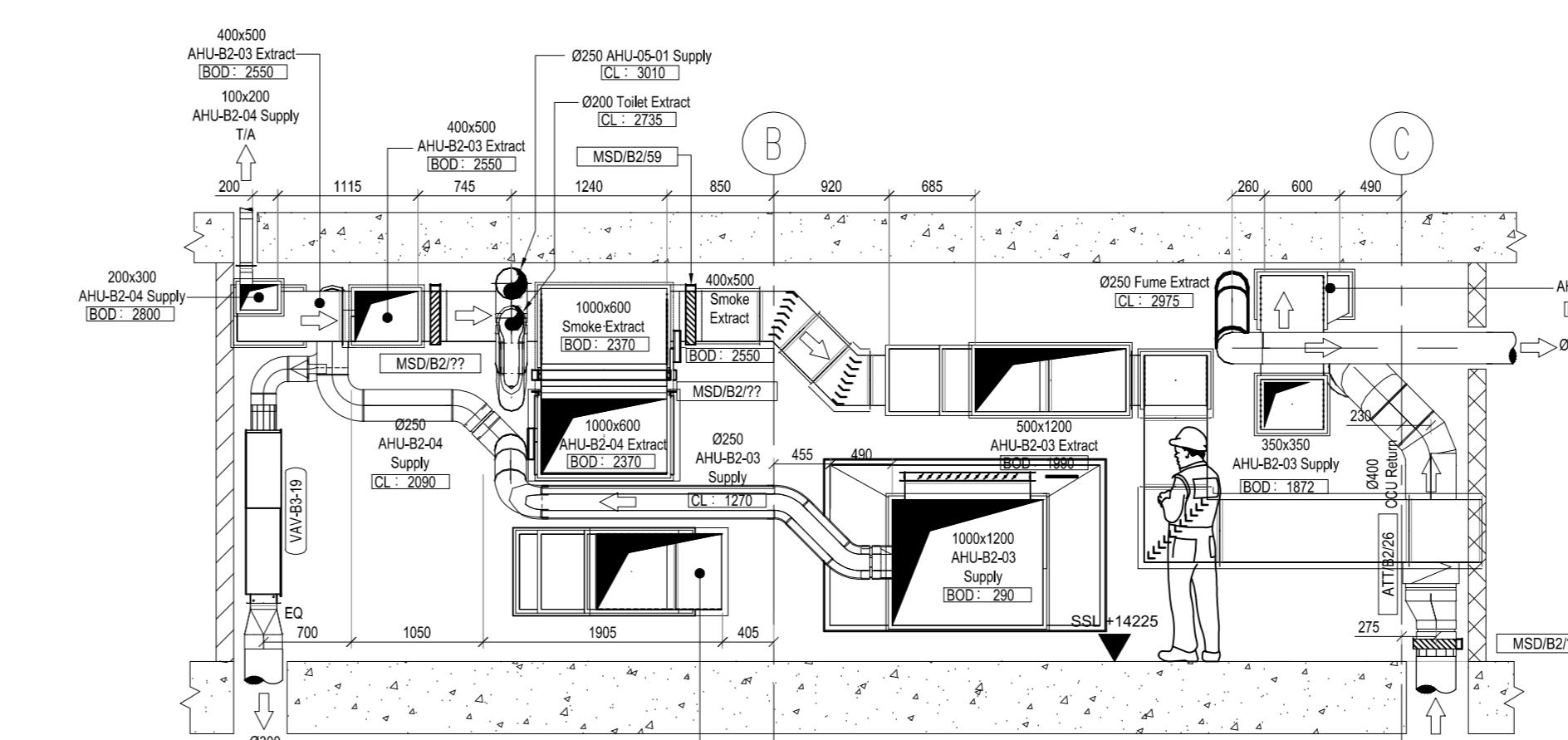
Section C-C
Scale 1:50



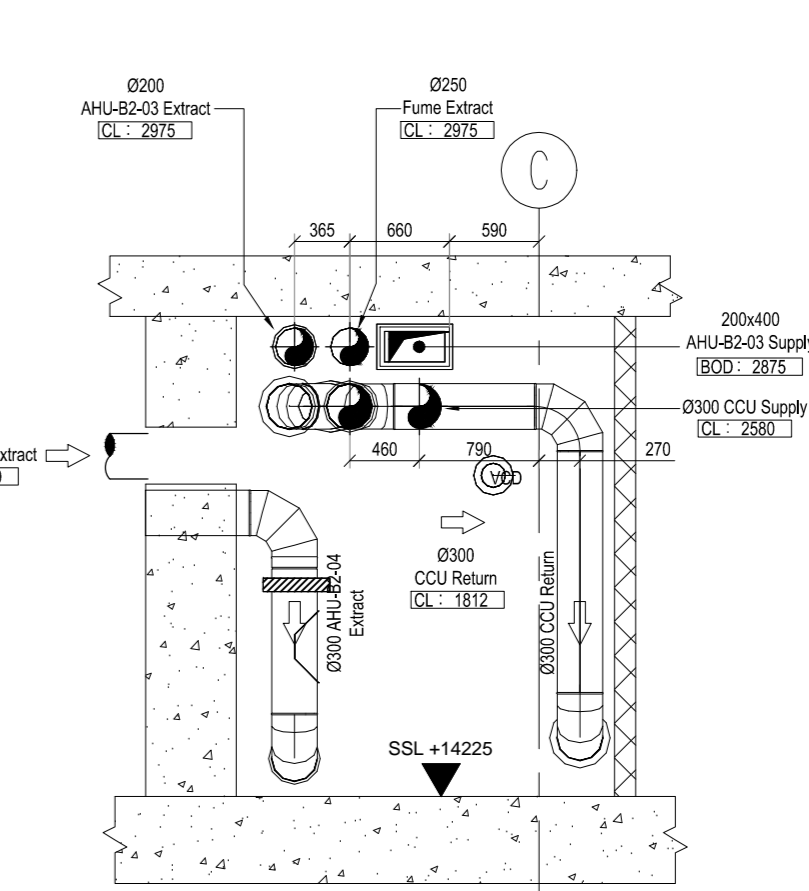
Section D-D
Scale 1:50



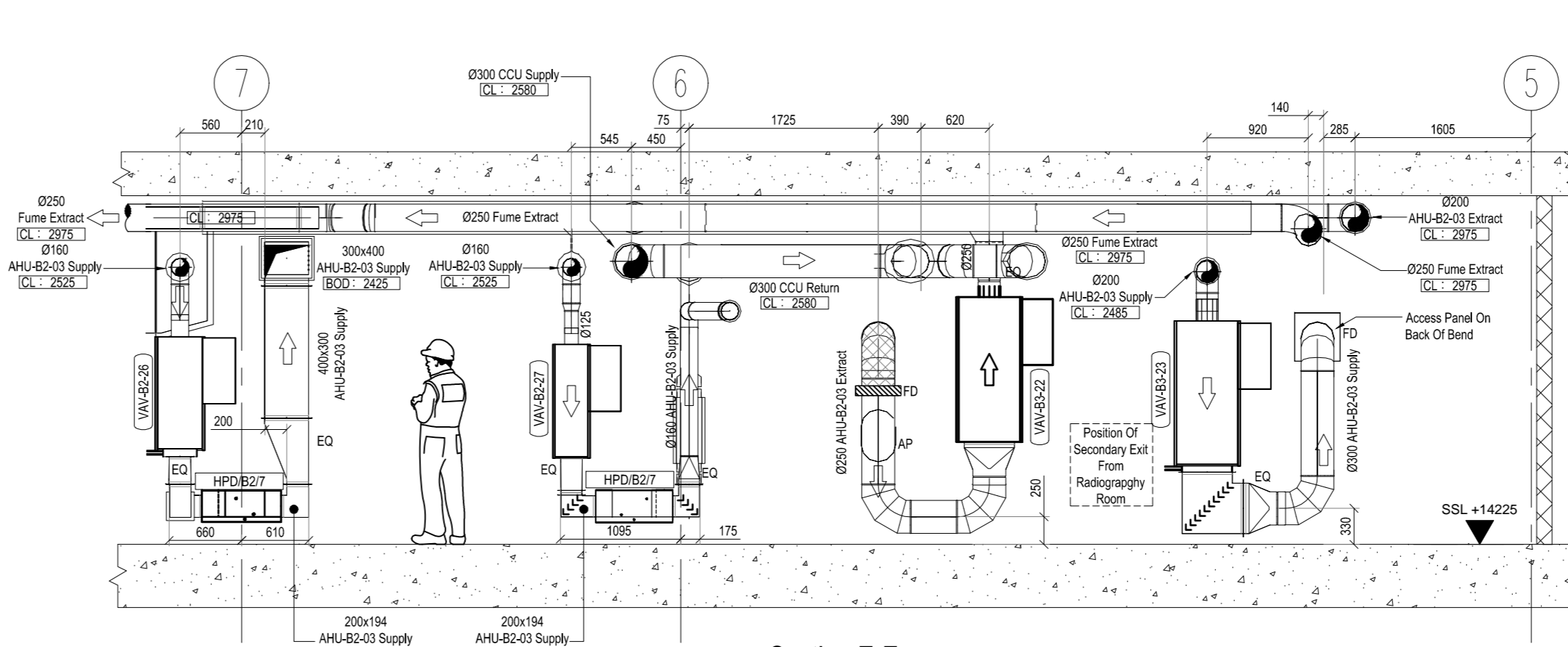
Axonometric View On Arrow 'X'
Scale NTS



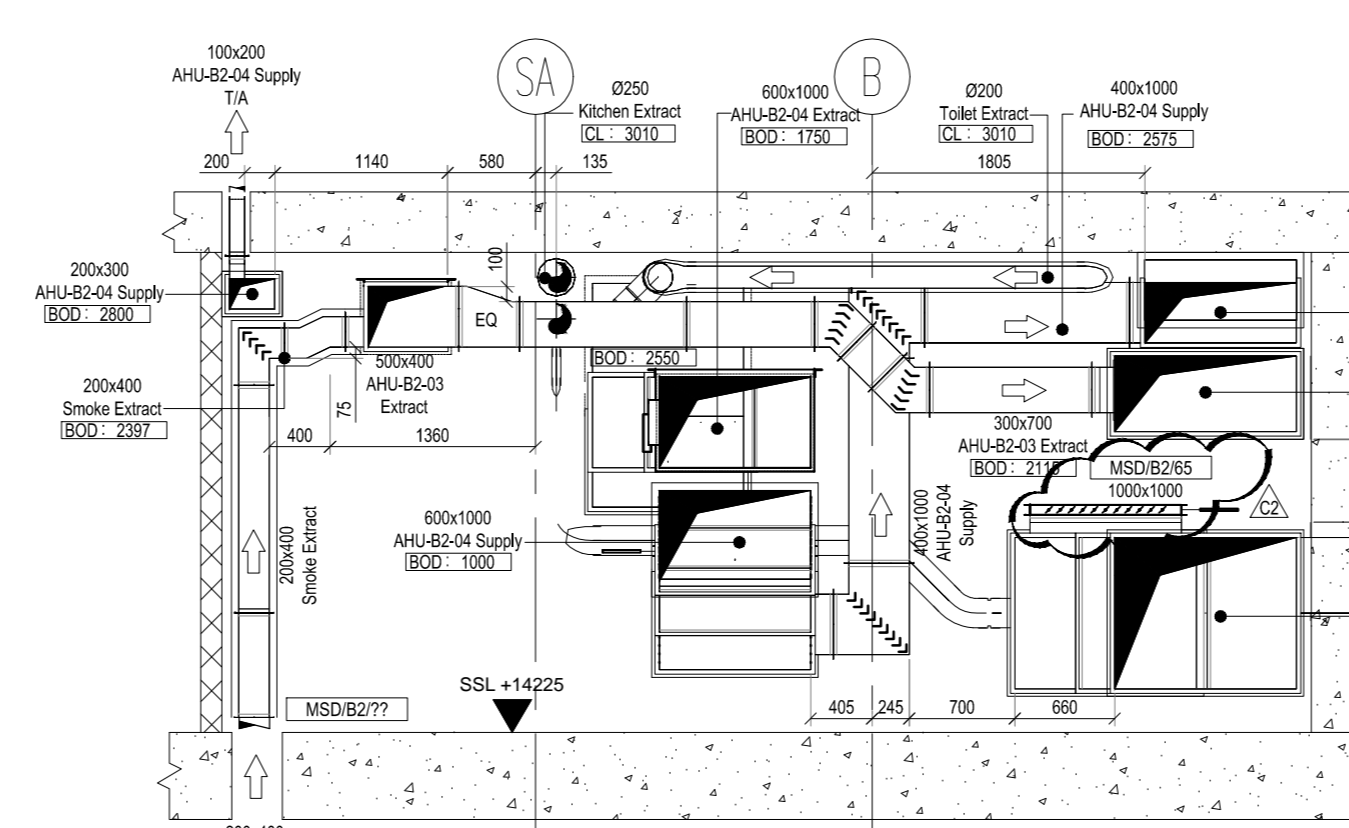
Section G-G
Scale 1:50



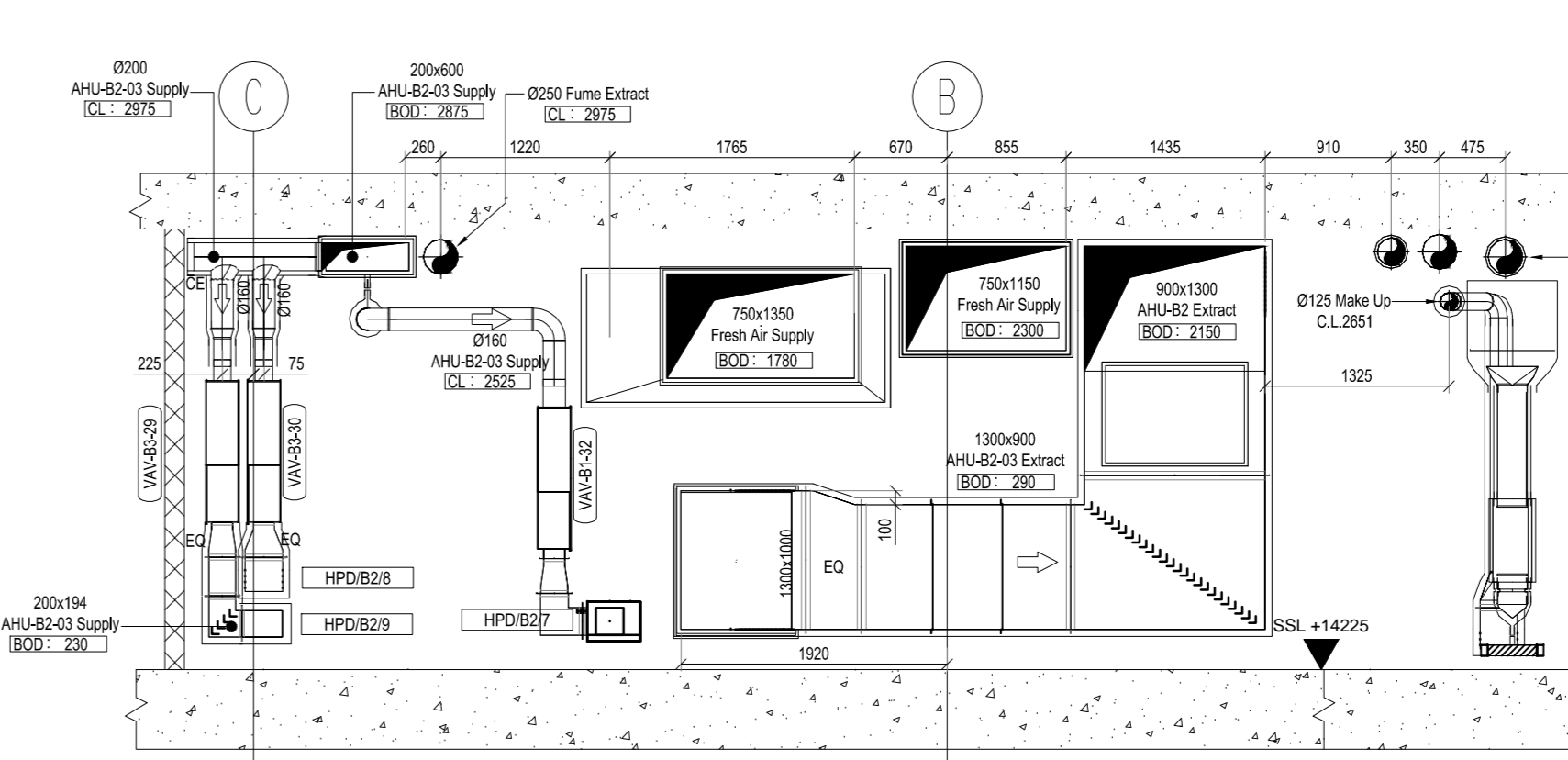
Section H-H
Scale 1:50



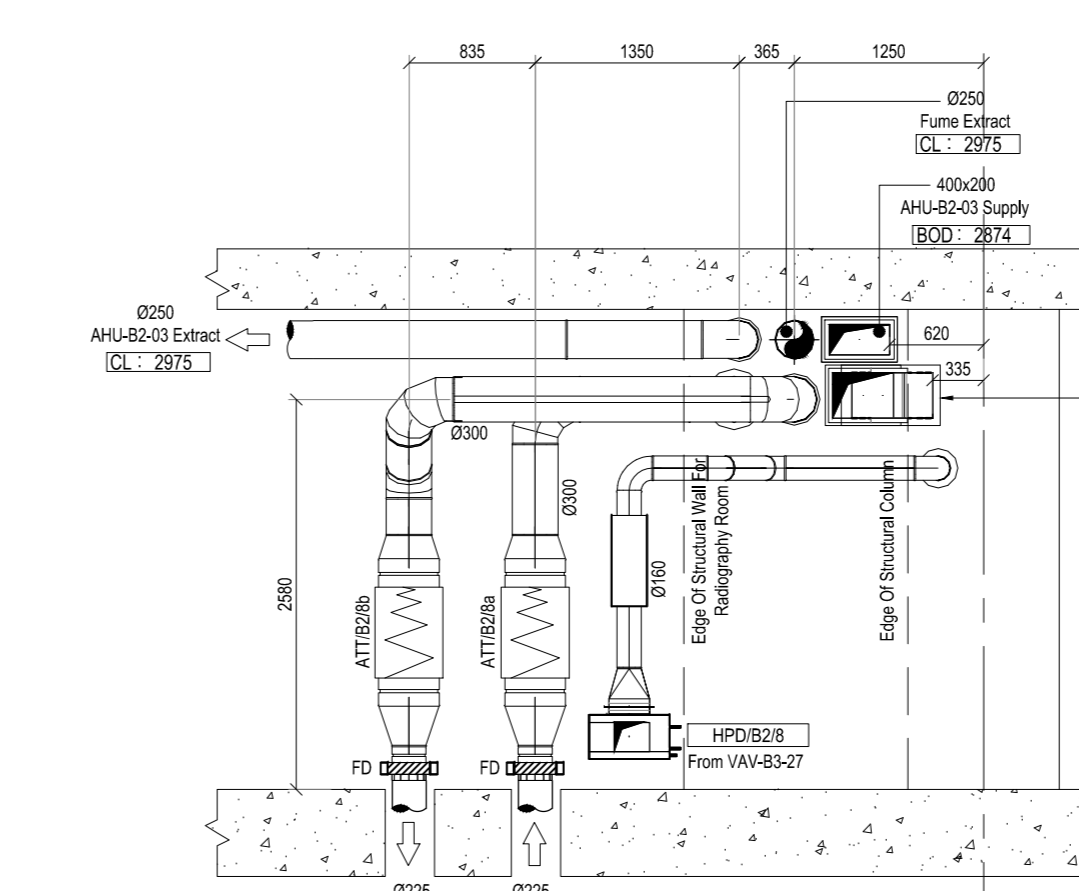
Section E-E
Scale 1:50



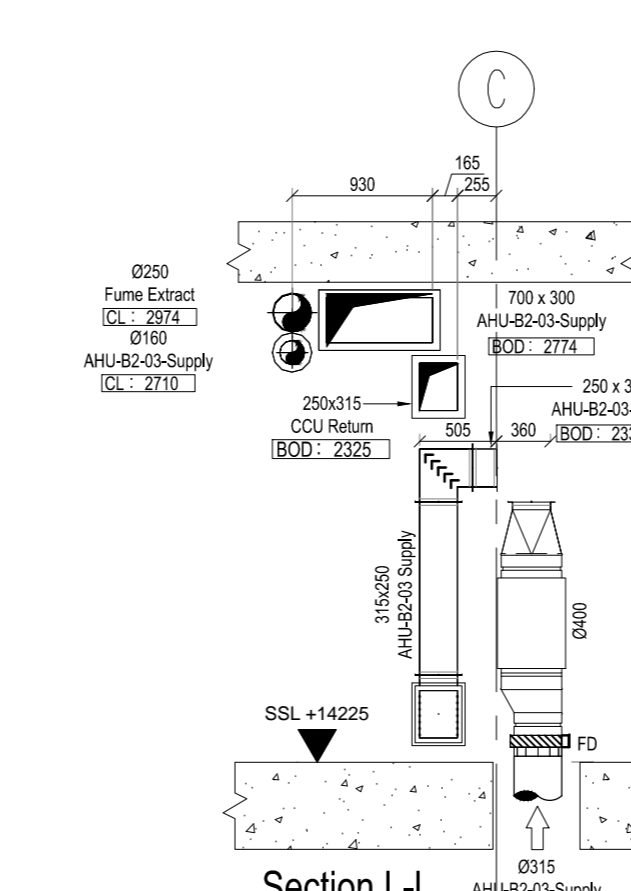
Section F-F
Scale 1:50



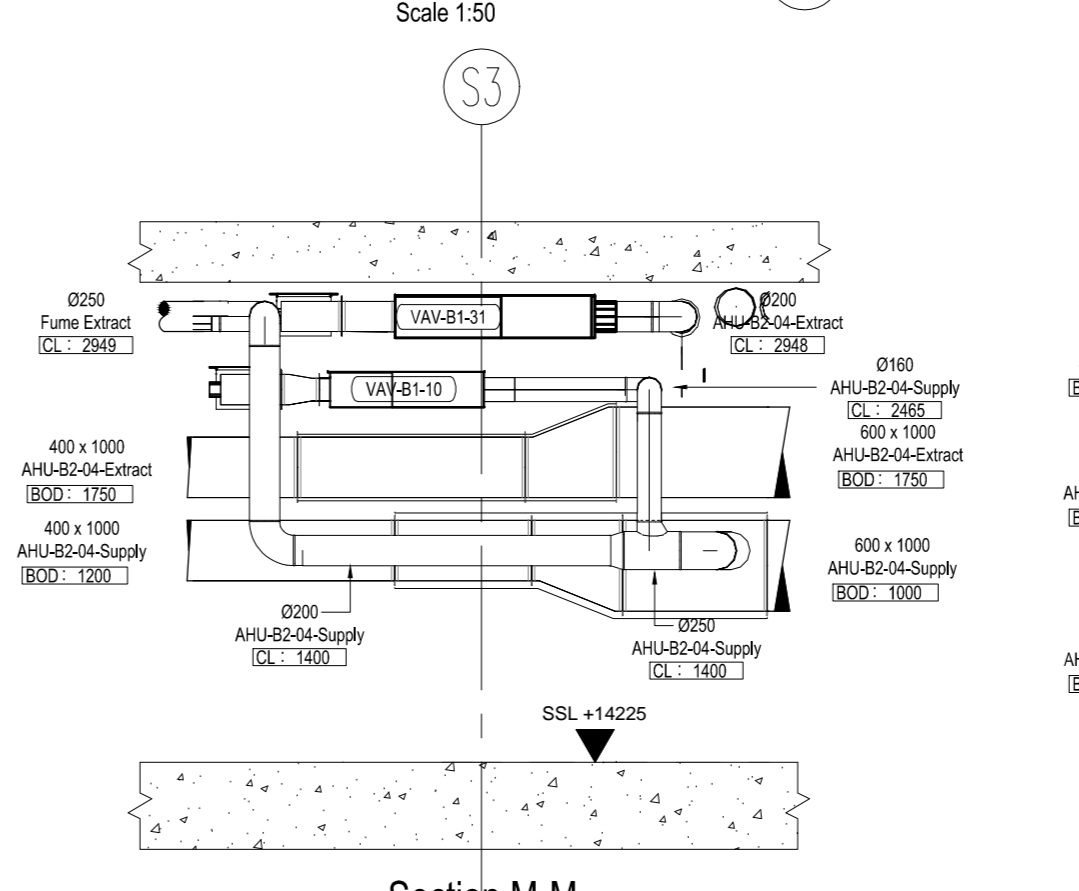
Section J-J
Scale 1:50



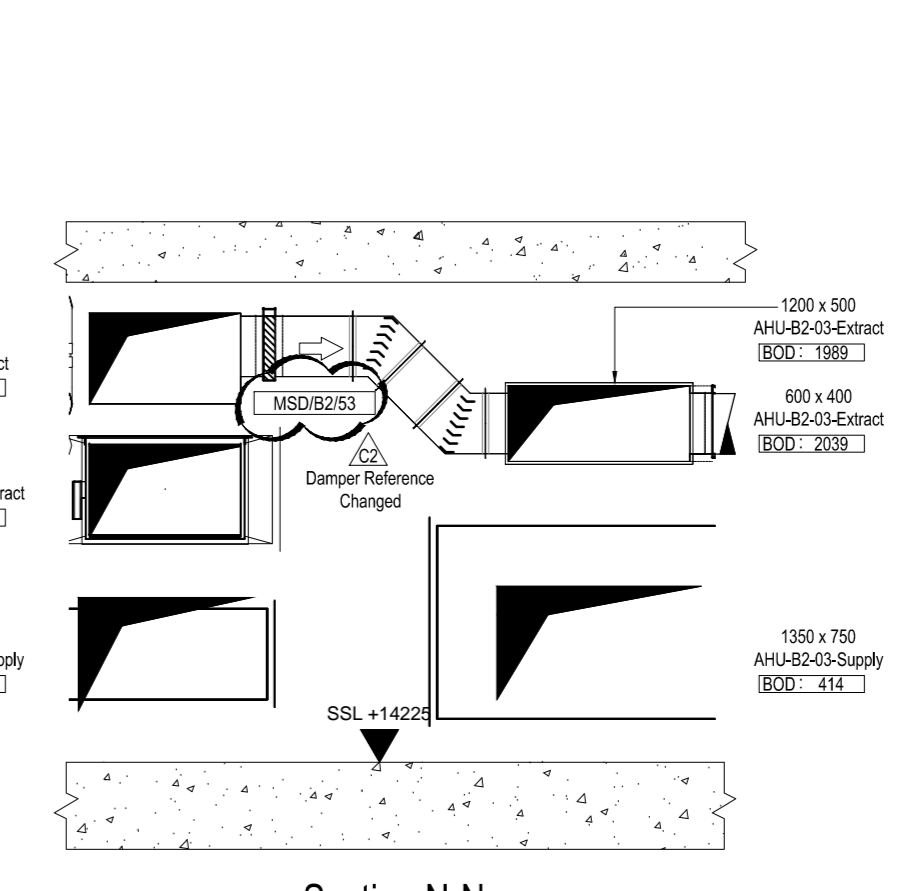
Section K-K
Scale 1:50



Section L-L
Scale 1:50



Section M-M
Scale 1:50

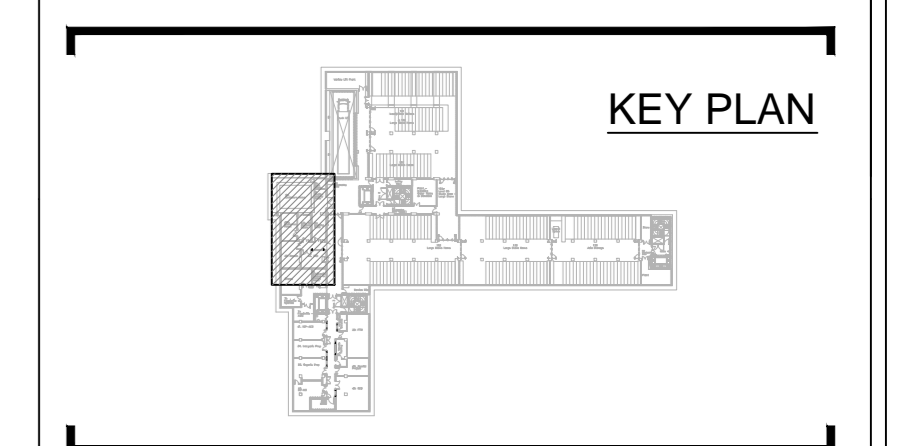


Section N-N
Scale 1:50

Michael J. Lonsdale Ltd. uses the copyright of this drawing which is supplied in confidence and which must not be used for any purpose other than that for which it is supplied and must not be reproduced without permission in writing from the client.

COMPUTER AIDED DRAWING - AVOID MANUAL MODIFICATION

THIS DRAWING MUST NOT BE SCALED.
ALL DIMENSIONS TO BE CHECKED ON SITE.



- NOTES:
- Access To Ductwork For Cleaning & Maintenance To Be In Accordance With Mechanical Specification Document
 - Flexible Connections To Have Maximum Deviation Of 30° Unless Otherwise Stated
 - Do Not Scale From This Drawing
 - All Dimensions Given In Millimetres Unless Otherwise Stated
 - Level As Noted Indicates Installation Height To Underside Of Rectangular Ductwork And Centre-Line Of Circular Ductwork
 - Ductwork Access Hatches And Inspection Doors For Internal Cleanliness Of System Are To Be Advised By Dust Cleaning Specialist
 - All Invert Levels Are Taken From a Finished Floor Level Of 14225mm
 - Ductwork Contractor To Ensure Access Panels For Cleaning Meet The Requirements Given In Ansp's Specification ARUP-61-SP-0002

Legends:

FIA	-	From Above
FIB	-	From Below
T/A	-	To Above
T/B	-	To Below
HL	-	High Level
LL	-	Low Level
FTT	-	Flat Top Transformer
FBT	-	Flat Bottom Transformer
OFT	-	Offset Transformer
EQ	-	Equal Transformer
VCD	-	Variable Control Damper
SBD	-	Single Blade Damper
FD	-	Fire Damper
SD	-	Smoke Damper
AP1	-	Access Panel - Type 1
AP2	-	Access Panel - Type 2
RS	-	Removable Section
CE	-	Cap End
SS	-	Stainless Steel
HS	-	Heater Battery

Fire Rated Ductwork
300°C at 1 Hour

02	05/03/13	Revised Ductwork Details, NOBETEC & MCB015	BTJ
01	16/06/12	AHU Sizes And Connections Amended Amended To Change From Common Based For Construction	BTJ
00	20/04/12	Revised For Approval	BTJ

CONSULTANT:
ARUP
15 Finsbury Street
London
E1C 2TA
Tel: +44(0)20 7818 1100
Fax: +44(0)20 7818 0200

ARCHITECT:
Rogers Stirk Harbour & Partners
Thames Street
Ranelagh Road
London
W6 8EP
Tel: +44(0)20 738 5125
Fax: +44(0)20 738 5409

CLIENT:
The British Museum
Great Russell Street
London
WC1B 3DG

PROJECT:
**British Museum
World Conservation And
Exhibition Centre**

STATUS:
CONSTRUCTION

DRAWING TITLE:
**Ductwork Sections
Basement Level B2 - Gridlines 5-S3
Building Five Sheet 2 Of 2**

Discipline: Mechanical	Project Phase: 1
Drawing Designer: Michael J Lonsdale	Originator's Job No: 6000
Checked By: B. Simpson	Drawn Date: 23/01/12
Approved By:	Scale: 1:50 @ AO
	Block Out Reference: Sey Key Plan

Drawing No:
6000-DR-DW-B2-04-2

Revision:
C2