

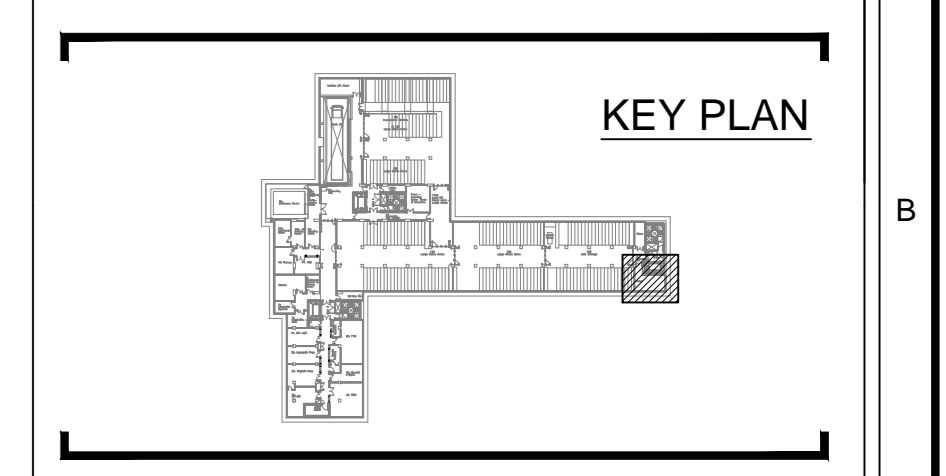
Michael J. Lonsdale Ltd. uses the copyright of the drawings which is applied in software and which may not be used for any purpose other than that for which it is supplied and may not be reproduced without permission in writing from the authors.

**COMPUTER AIDED DRAWING - AVOID MANUAL MODIFICATION**

**THIS DRAWING MUST NOT BE SCALED. ALL DIMENSIONS TO BE CHECKED ON SITE.**

**REFERENCE DRAWINGS:**

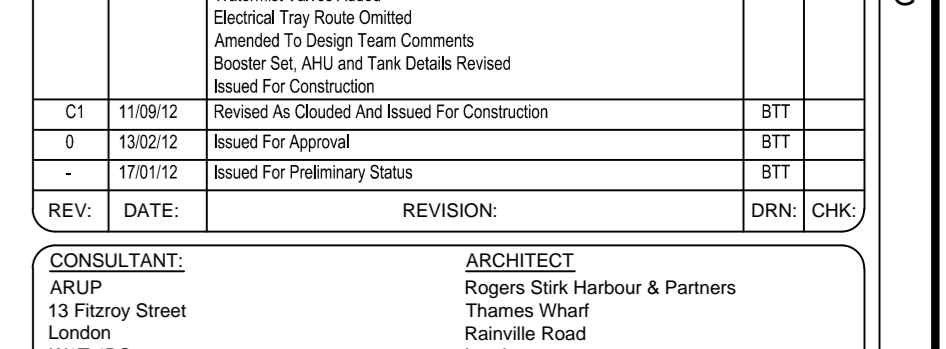
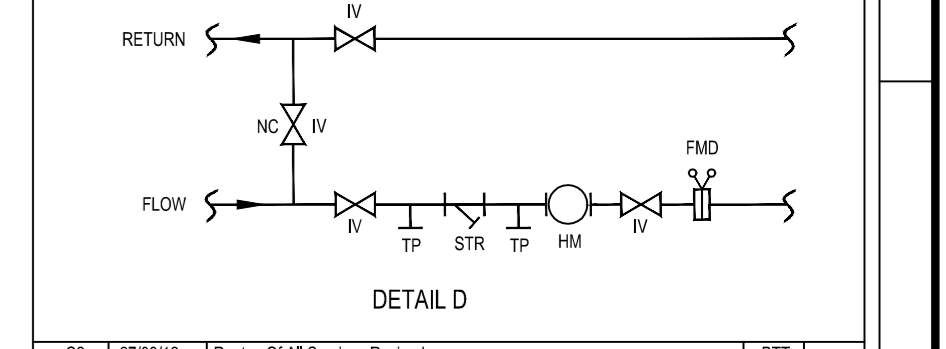
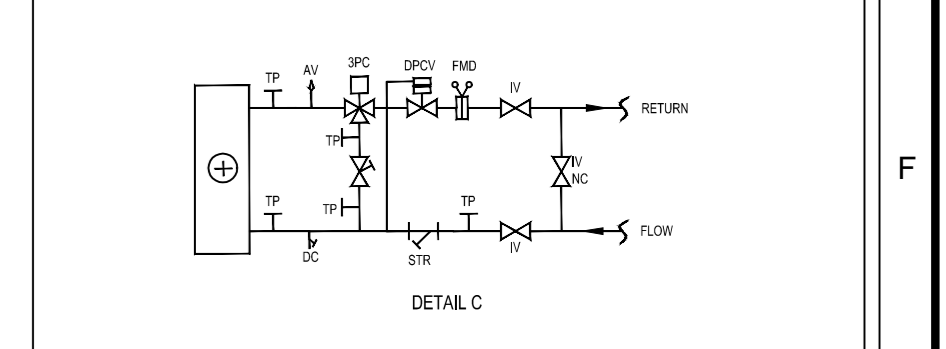
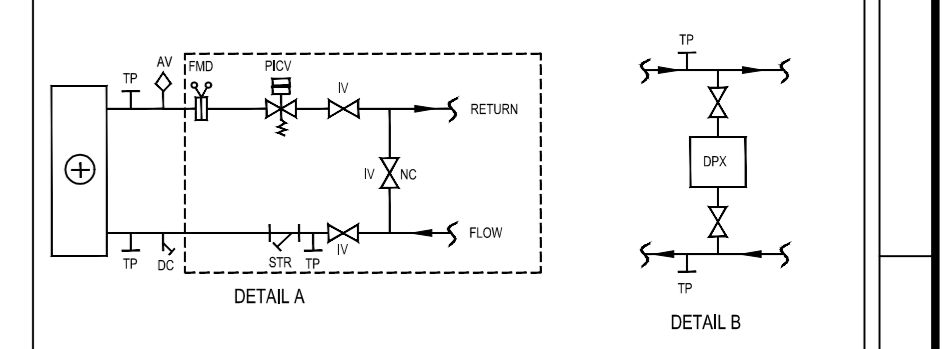
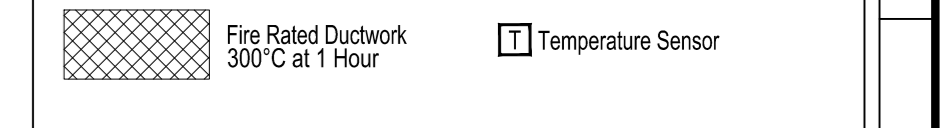
ARUP-DR-DR-02	Mechanical Services Level B2 Layout Draw C
ARUP-DR-DR-02	Final Health Level B2 Layout Draw C Building 2 & 4
ARUP-DR-DR-02	General of Handing Schematic, Basement Building 1, 2 & 4



- NOTES:**
- Do not scale from this drawing
  - All dimensions given in millimetres unless otherwise stated
  - Invert level as noted indicates installation height to underside of rectangular ductwork and centre-line of circular ductwork
  - All invert levels are taken from a finished floor level of 14225mm
  - Specifications for electric heater batteries to be confirmed, dimensions and maintenance access to be advised
  - Ductwork contractor to ensure access panels for cleaning meet fire requirements given in arup's specification ARUP-S1-SP-0002
  - All ductwork terminating in dampers or open ends must be finished with 60% free area insect mesh with maximum hole size of 1mm unless otherwise specified.

**Legends:**

FA	From Above	VCD	Variable Control Damper
FB	From Below	SSD	Single Blade Damper
TA	To Above	FD	Fire Damper
TB	To Below	SD	Smoke Damper
HL	High Level	AP1	Access Panel - Type 1
LL	Low Level	AP2	Access Panel - Type 2
FTT	Flat Top Transformer	RS	Removable Section
FBT	Flat Bottom Transformer	CE	Cap End
OTT	Offset Transformer	SS	Stainless Steel
EQ	Equal Transformer	HB	Heater Battery
VCD	Variable Control Damper		



REV	DATE	REVISION	BY	CHK
02	27/03/12	Issue of all Services Network Water Volumes Added Electrical Trip Circuit Breaker Trip Change Team Comments Rooms Set Out and Tank Details Revised based on Comments	BT	BT
01	11/03/12	Revised for approval	BT	BT
00	13/02/12	Revised for approval	BT	BT

**CONSULTANT:**  
ARUP  
15 Finsbury Street  
London  
EC2A 3DU  
Tel: +44(0)20 788 6133  
Fax: +44(0)20 788 6034

**ARCHITECT:**  
Rogers Stirk Harbour & Partners  
Thames Wharf  
Riverside Road  
London  
W6 7SA  
Tel: +44(0)20 738 6135  
Fax: +44(0)20 738 5849

**PROJECT:**  
**British Museum  
World Conservation And  
Exhibition Centre**

**STATUS:**  
**CONSTRUCTION**

**DRAWING TITLE:**  
**Co-Ordinated Services  
Basement Level B2  
Plantroom Layout PL2**

Drawn By Michael J Lonsdale	Checked By B. Simpson	Approved By	Project No. 6000	Engineer's Job No. 1101112	Drawn Date 11/03/12	Checked Date 11/03/12	Approved Date 11/03/12	Scale 1:25 @ A0	Revision See Key Plan
--------------------------------	--------------------------	-------------	---------------------	-------------------------------	------------------------	--------------------------	---------------------------	--------------------	--------------------------

Drawing No: **6000-DR-CS-B2-PL2**

Revision: **C2**