

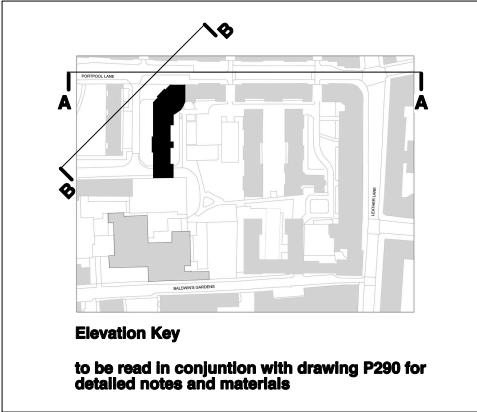
Proposed Block 1
Elevation A - 1:200@A1



Proposed Block 1
Elevation A - 1:100 @A1



Proposed Block 1
Elevation B - 1:100 @A1



2014.09.15	C Relocation of north core bin store to Portpool Lane elevation; window positions to community hall revised; signage position revised and combined with basement grilles; large opening to fifth floor stair revised as stair now terminates at 4th floor.
2014.02.12	B Storey height increased, mansard roof angle adjusted
2013.02.08	A Plinth height increased to 2 storeys
Revisions:	

Notes:

- do not scale from this drawing
- survey indicative only
- proposals are subject to utilities surveys
- drawing to be read in conjunction with relevant consultant's information
- drawing to be read in conjunction with relevant specifications

Higgins

MatthewLloydArchitects LLP

1 The Hangar
Perseverance Works
38 Kingsland Road
London E2 8DD
T 020 7613 1934
email: mail@matthewlloyd.co.uk
www.matthewlloyd.co.uk

©2014

PLANNING			©2014
Original Sheet Size			A1
0 1m 2m 3m 4m 5m			
Date:	Scale:	Drawn by:	BM
AUG 14	1:100@A1 / 1:200@A3		
Project: Bourne Estate South for Higgins Construction PLC			
Drawing title: BLOCK 1 North & Northwest Elevation			
Reference:	Dep. No:	Rev.	
BE14	P280	C	

BLOCK 1