

'Make teachers use public transport'

TEACHERS should lose their school parking spaces as part of Camden's campaign to reduce the number of cars on the school run, according to Councillor Mike Greene, writes *Jonathan Allen*.

But headteachers say that losing the car parks would make it more difficult to attract the best teachers to Camden's schools.

Cllr Greene, who sits on the council's School Travel Consultation Steering Group, does not see why teachers should be exempt from Camden's policy and wants to see car parks in Camden's schools turned into extra



Cllr Mike Greene

playground space.

He said: "The parent that has made the effort and given up the car - has walked the mile to school or sat on the bus - then sees the child's teacher pulling up in a car and walking into the classroom - well, what message does that show? Parents

don't feel an example is being set. There is no good reason for teachers to be an exception."

He recognises that teachers are likely to react badly to losing a "perk", but adds: "Where we are talking about is very close to public transport."

At a recent Town Hall planning meeting he objected to the car park in the plans of the new building for St Mary and St Pancras Primary School in Polygon Road, Somers Town. The original plans included nine spaces, since reduced to four. Speaking about the car park later to the New Journal he said: "Given

our policy on the school run this seems like a retrograde step."

Sheila McCalla-Gordon, headteacher at St Mary and St Pancras, said: "Recruiting teachers into the inner-city is difficult enough as it is. If we want the best teachers, we have to be able to offer a parking space, even if just for emergency use."

The school meets with Camden's environment officers in the next few weeks to draw up a green travel plan.

A spokeswoman for the National Union of Teachers said: "One of the difficulties for teachers is that they have huge amount of work to take forwards and backwards to school. If they have to carry it on bus and Underground, the likelihood is that they'll suffer back damage and have to be replaced by supply teachers."

BARGAIN hunters were spoilt for choice at Highgate Newtown Community Centre's spring auction and jumble sale on Saturday.

Centre director Nick Roxon turned into television antiques expert David Dickinson for the day to comper the

by SUNITA RAPPAP

event, which raised more than £1,000 towards the running of the centre in Bertram Road. Mr Roxon said: "We always attract a good crowd, but I think the sunny weather helped. The money raised will probably go

towards renovating our reception area."

He added: "Auctions are a great way of recycling old products."

"We had everything from a trouser press to children's bicycles and an old cricket bat."

Pictured: Centre manager Nick Roxon in action.

Heath must make more savings says Corporation of London

FURTHER savings on the Heath's overstretched £5.5 million budget are likely to be required, according to a new report from the Corporation of London, writes *Sunita Rappai*.

Jennifer Adams, director of Open Spaces, told

a meeting of the Heath's management committee on Monday that savings across all the departments were necessary to maintain services in the present financial climate.

Key projects for the Heath include the renovation

of the Bowling Green pavilion and the Parliament Hill play area and the introduction of the revised charging arrangements for the swimming ponds. The proposals were agreed by the management committee.

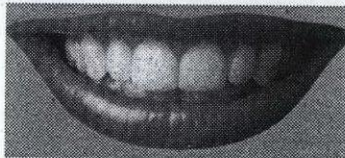
Ready to improve your financial future?

Knowledge Worker has products that can help maximise your future wealth. For example, did you know that our **CashStream Basic** product shows you whether you are getting richer or poorer over time? **It's FREE.** Why not download it now?

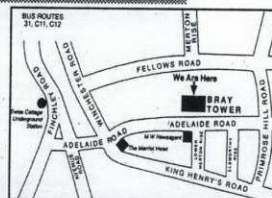
www.knwk.co.uk

BRAY DENTAL PRACTICE

ALL NEW NHS AND PRIVATE PATIENTS WELCOME



We provide the latest and most comprehensive treatment programme. This includes dentures, crowns, bridges and veneers, plus the latest equipment and techniques to combat dental disease, together with cosmetic and restorative treatments including bleaching.



BRAY DENTAL PRACTICE

4 Bray Tower, Adelaide Road, Swiss Cottage, London NW3 3JX

Tel: 020 7722 6000

Opening hours: Mon-Fri 9.00am to 5.30pm Sat by appointment

EMPLOYMENT ADVICE, ASSISTANCE AND REPRESENTATION FOR EMPLOYEES

BLAVO & Co SOLICITORS

- ◆ Have you been unfairly dismissed?
- ◆ Have you walked out of your job and want to claim constructive dismissal?
- ◆ Have you been discriminated against - because of your race, sex, disability, religion, sexual orientation, or because you work part-time, or have requested flexible working arrangements due to child caring responsibilities?
- ◆ Have you had your wages withheld?

FOR A FREE HALF HOUR CONSULTATION
CONTACT OUR EMPLOYMENT DEPARTMENT ON
020 7025 2020

FOR PROFESSIONAL AND PRACTICAL ADVICE AND ASSISTANCE

ASYLUM SEEKERS SHOW THE WAY WHEN IT COMES TO OPENING DOORS

POLITICIANS trying to outdo each other over immigration are making street-level racism worse, asylum seekers at a Kentish Town women's centre have warned.

The All African Women's Group of around 80 asylum seekers held an open day at Crossroads Women's Centre in Caversham Road on Saturday to share their food, cultures and concerns with residents.

Most have had claims for asylum rejected. They must 'sign on' daily or weekly, knowing they could be deported at any moment.

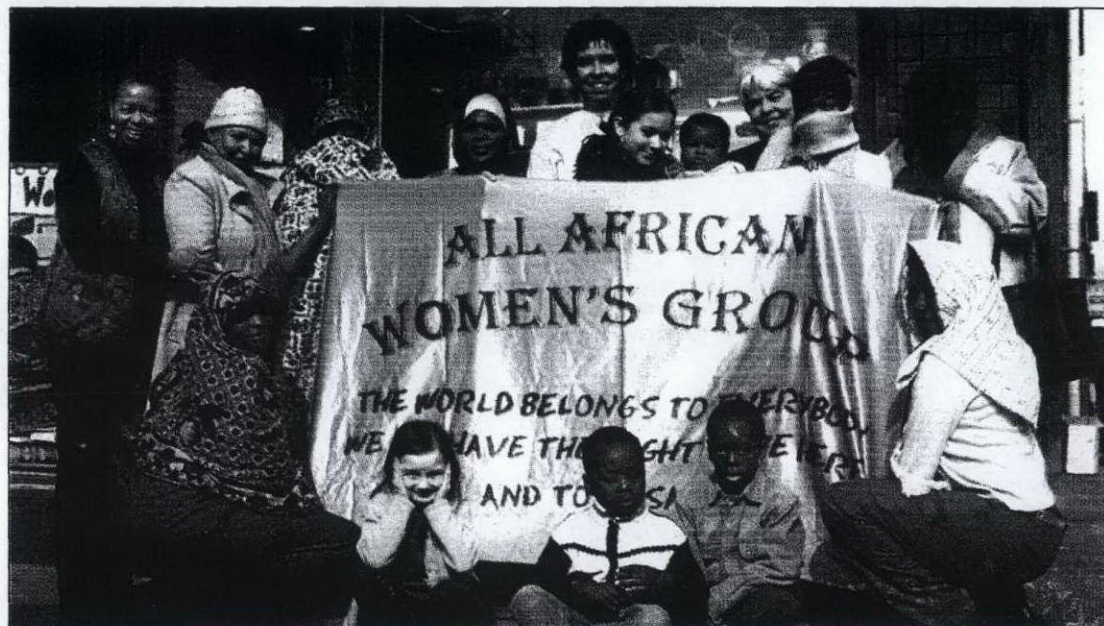
Hope, an asylum

by KIM JANSSEN

seeker from Burundi, explained the effect of Tory leader Michael Howard and Prime Minister Tony Blair attempting to outdo each other over immigration. She said: "Everywhere I go, the looks on people's faces change when they see I am an asylum seeker."

Asylum-seeker Ida, from Congo, added: "I do not know where I will be sleeping the next day or where I will get healthcare or money. I cry every night when I go to sleep."

Pictured: women at Saturday's open day.



Fears that sex belt will make 'threatening atmosphere' even worse Protests at plan for sex shop on route to school

by RICHARD OSLEY

A PORN boss is on a collision course with residents over plans to open a sex shop in Swiss Cottage.

Licensing chiefs are due to decide whether

open could lead to the creation of a "sex belt".

Concerned residents could now come face to face with Mr Darker at a

should have to pass such an establishment."

The letter adds: "The fact that there is already a topless lap-dancing bar at 309 Finchley Road (Secrets) means there is

shop of this type being granted a licence. This seems both dangerous and a serious risk."

But councillors will have to consider the application with care.

would be appointed only if the licence is granted.

Police have raised no objections to the licence being approved.

Written papers submitted by Darker Enterprises said: "We would comply with any requirements of the council."

Rebuilt school to have flats on top

by JONATHAN ALLEN

CHILDREN at a Somers Town primary school will share their building with university students after planning permission was granted for large-scale rebuilding.

Camden Council's planning committee gave approval on Thursday for the demolition of St Mary and St Pancras Primary in Polygon Road.

It will be replaced by a six-storey building, the top four floors largely made up of 44 student flats.

Neighbours complained that they were concerned about noise from the building work and from students "who are known to be loud and celebratory on occasions".

School inspectors criticised the primary's accommodation in a 2003 Ofsted report, saying the lack of space had a negative impact on pupil achievement.

The committee approved the application on condition that architects allowed plenty of open space in the redevelopment.