

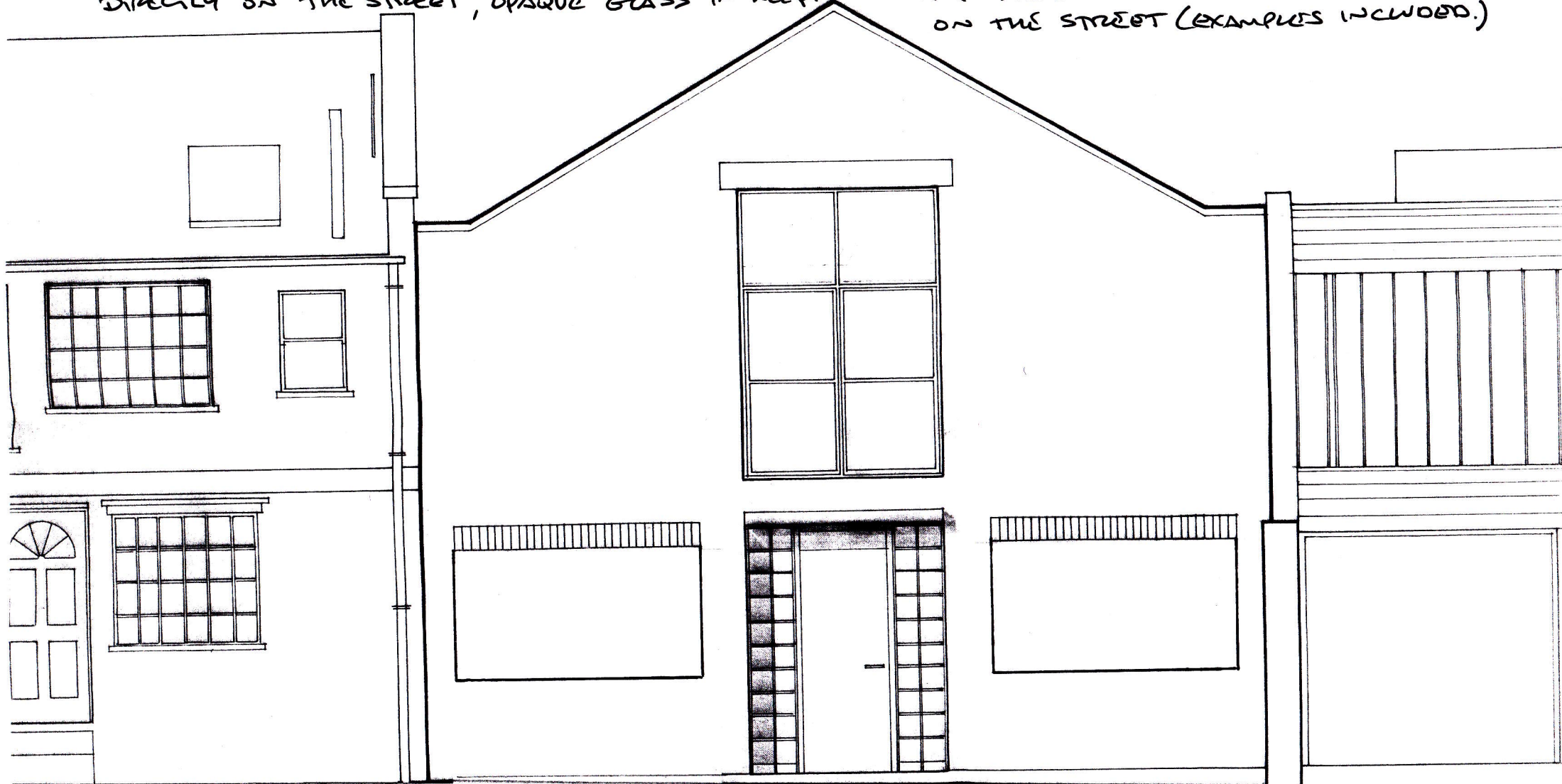
- PROPOSED FRONT OF 54, CAMDEN MEWS.

- THE WINDOW ON THE RIGHT SHALL REMAIN 225cm WIDE BUT WILL BE RE-BUILT TO A MORE STANDARD SHAPE WITH A DEPTH OF 120cm.

- THE GARAGE DOOR SHALL BE REPLACED WITH A WINDOW MATCHING THE ONE PROPOSED ON THE RIGHT.

- THE BRACKS USED TO MAKE THE SHAPE FOR THE NEW WINDOWS WILL BE LONDON STOCK BRACKS TO MATCH THE REST OF THE PROPERTY.

- THE NEW WINDOWS WILL HAVE METAL FRAMES AND, FOR SECURITY AND PRIVACY REASONS AS THEY ARE DIRECTLY ON THE STREET, OPAQUE GLASS IN KEEPING WITH THE WINDOWS OF OTHER PROPERTIES ON THE STREET (EXAMPLES INCLOWED.)



Drawing - 002 - Elevation as proposed