

2861

11 WADHAM GARDENS, NW3

**Discharge of Planning Condition 6
Permission 2011/6180/P**

Photos of installed tree protection measures

17.7.14

M•R Partnership

11 WADHAM GARDENS - TREE PROTECTION

The attached photos record the installed tree protection measures at 11 Wadham Gardens NW3 in advance of construction works to implement planning permission 2011/6180/P.

The tree protection measures are in accordance with the information supplied previously to discharge Condition 5:

Arboricultural Method Statement (ref. MRP/11WG/AMS/01) including tree protection plan prepared by Landmark Trees 28th January 2013 (see attached).

This submission of details was approved by Camden Council on 16 August 2013 (ref. 2013/3664/P)

Front Garden

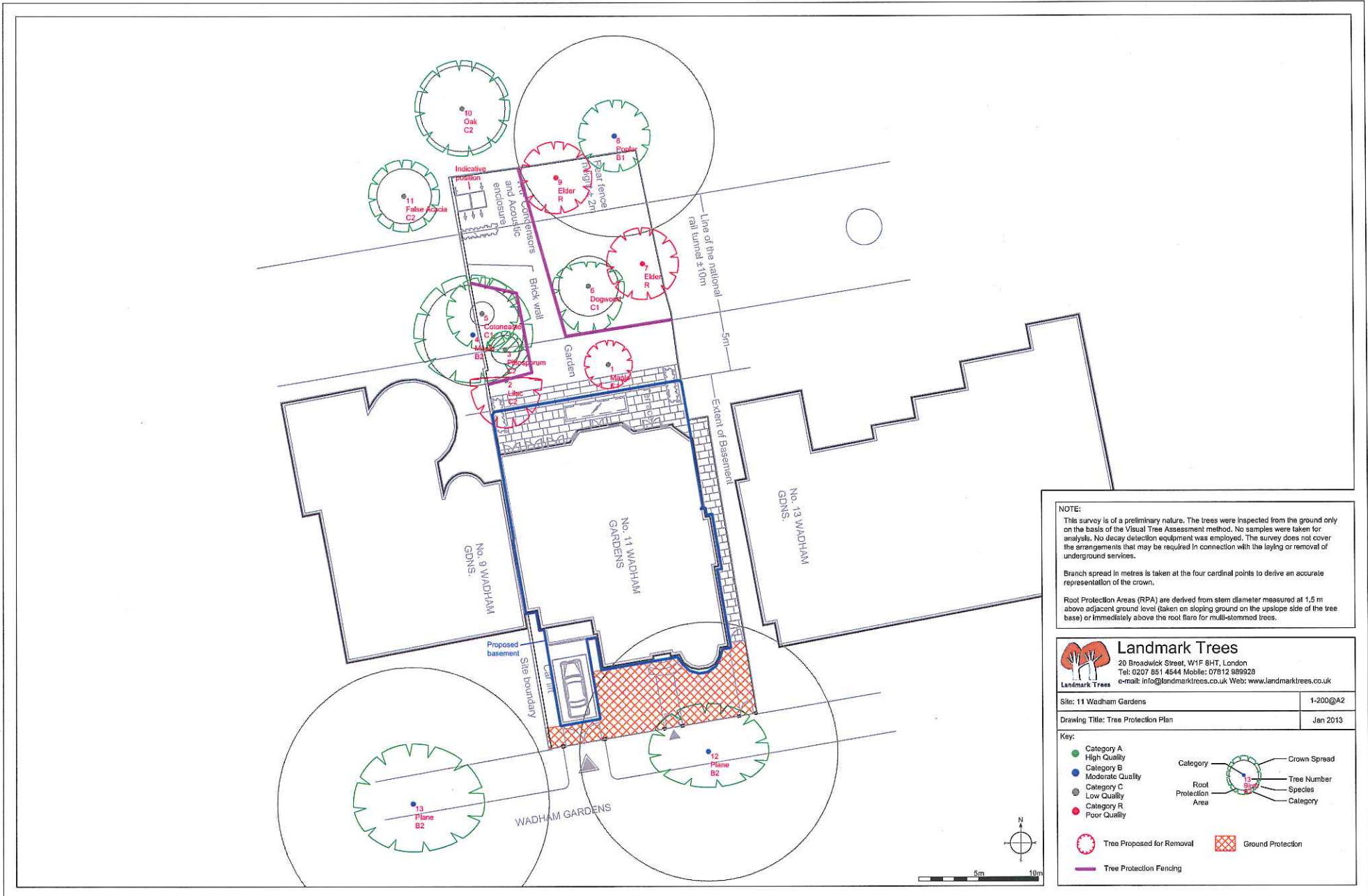
The ground protection to Plane Tree no. 12 outside the site includes the following:

- layer of bark chippings over the front lawn and de grubbed planting borders
- water permeable membrane over the bark chippings - this is presently turned up at the front boundary and will be extended over the area of the front hedge if necessary
- Ground guard mats protecting the membrane and allowing storage of materials and plant for the excavation operations
- block and mesh fencing to the perimeter of the works area.

Rear Garden

The tree protection includes:

- mesh panel fencing protecting the root protection areas of trees 3,4,5,6,7,8 and 9 within the site, all as per the approved Landmark Trees drawing.



NOTE:
 This survey is of a preliminary nature. The trees were inspected from the ground only on the basis of the Visual Tree Assessment method. No samples were taken for analysis. No decay detection equipment was employed. The survey does not cover the arrangements that may be required in connection with the laying or removal of underground services.
 Branch spread in metres is taken at the four cardinal points to derive an accurate representation of the crown.
 Root Protection Areas (RPA) are derived from stem diameter measured at 1.5 m above adjacent ground level (taken on sloping ground on the upslope side of the tree base) or immediately above the root flare for multi-stemmed trees.

Landmark Trees
 20 Broadwick Street, W1F 8HT, London
 Tel: 0207 851 4544 Mobile: 07812 989928
 e-mail: info@landmarktrees.co.uk Web: www.landmarktrees.co.uk

Site: 11 Wadham Gardens	1-200/A2
Drawing Title: Tree Protection Plan	Jan 2013

Key:

- Category A High Quality
- Category B Moderate Quality
- Category C Low Quality
- Category R Poor Quality

Category: [Diagram] Crown Spread
 Tree Number: [Diagram]
 Species: [Diagram]
 Category: [Diagram]

Root Protection Area: [Diagram]

Tree Proposed for Removal
 Ground Protection

Tree Protection Fencing



FRONT GARDEN



REAR GARDEN