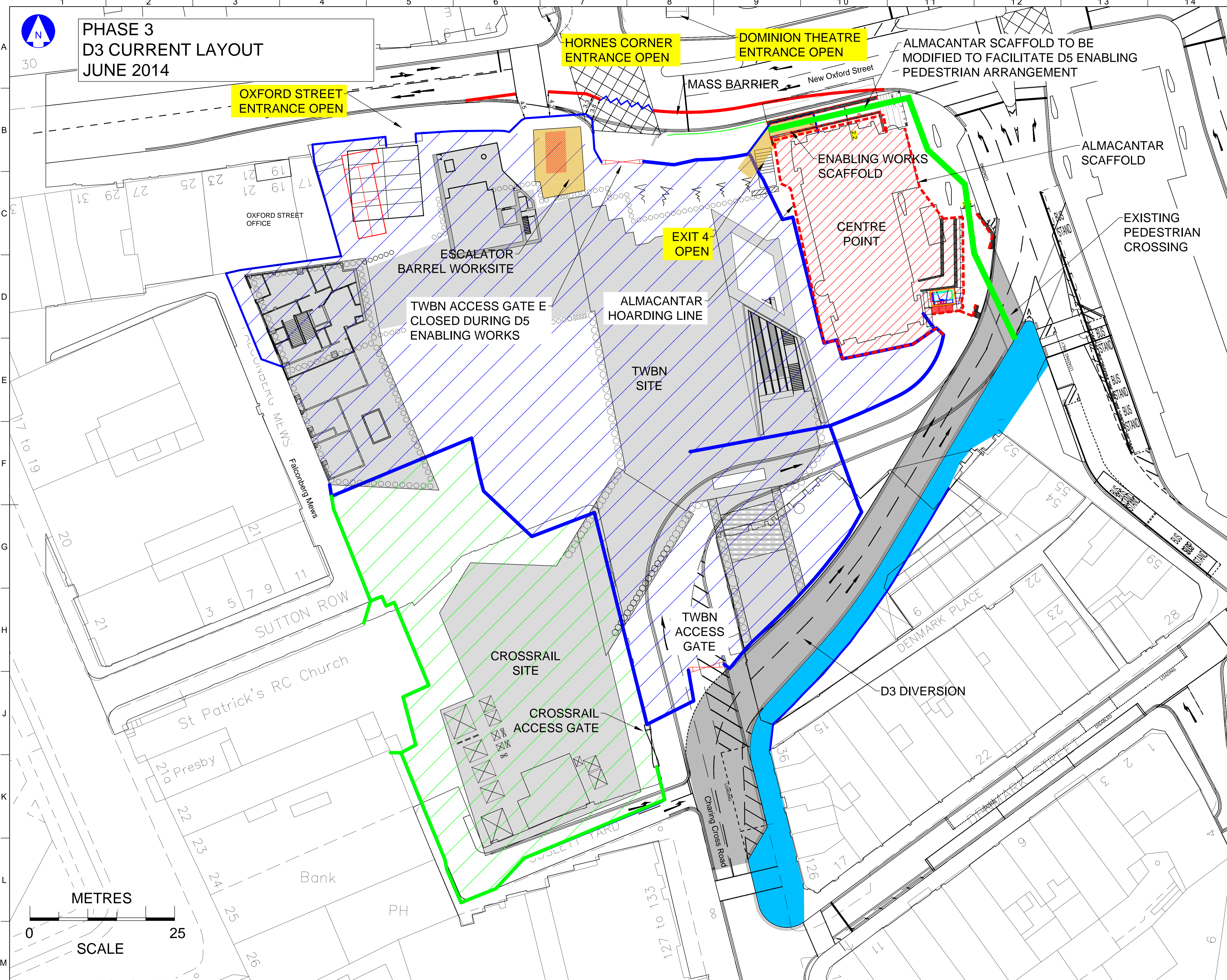


**PHASE 3
D3 CURRENT LAYOUT
JUNE 2014**



DO NOT SCALE THIS DRAWING.

NOTES

1. THIS DRAWING IS TO BE READ IN CONJUNCTION WITH ALL RELEVANT ARCHITECTS AND ENGINEERS DRAWINGS AND THE SPECIFICATION.
2. ALL DIMENSIONS ARE IN MILLIMETRES UNLESS NOTED OTHERWISE.
3. ALL LEVELS ARE IN METRES AND RELATE TO LU HEIGHT DATUM. THE LU HEIGHT DATUM LEVEL IS SET AT 100m BELOW OS DATUM NEWLYN.

KEY

	TWBN SITE BOUNDARY
	CROSSRAIL SITE BOUNDARY
	HIGHWAY D3
	FOOTWAY (TWBN)
	FOOTWAY (ALMACANTAR)
	ALMACANTAR SITE BOUNDARY

THIS SET OF DRAWINGS HAS BEEN PUT TOGETHER BY TAYLOR WOODROW BAM NUTTALL JOINT VENTURE (TWBN) FOR DISCUSSION PURPOSES ONLY.

TWBN HAS BEEN SUPPLIED WITH THE HOARDING LINE INFORMATION AT CENTRE POINT BY SIR ROBERT MCALPINE AND STEER DAVIES GLEAVE AND CAN NOT BE RESPONSIBLE FOR ITS ACCURACY.

00	RR	FIRST ISSUE	KB	KB	KB	17.06.14
Rev.	By	Revision	Desn	T.Chk	T.App	Date



Status **FOR INFORMATION**

Discipline
Line **NORTHERN/CENTRAL** Location Code **N105**

Location **TOTTENHAM COURT ROAD**
Site/Project **TOTTENHAM COURT ROAD STATION UPGRADE**

Title **TCRSU D3 CURRENT LAYOUT**

Drawn	R. Razmus	Date	17.06.2014
Designed	K. Burrows	Technical Approved	K. Burrows
Technical Checked	K. Burrows	Project Approved	S. Buck
Grid	PER / Cost No		

Project Document Code
Scales **1:300@A1** Sheet Number **1 of 1**

Drawing No. **VBN-TCR-8742-SKC-000976** Rev. **00**

