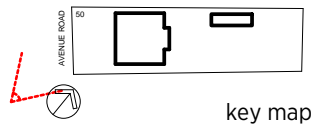


EXISTING



PROPOSED

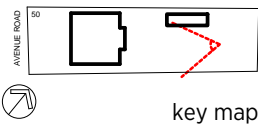
NO NOTICEABLE CHANGES ON THE
FACADE FACING AVENUE ROAD



EXISTING



PROPOSED



EXISTING



PROPOSED



EXISTING



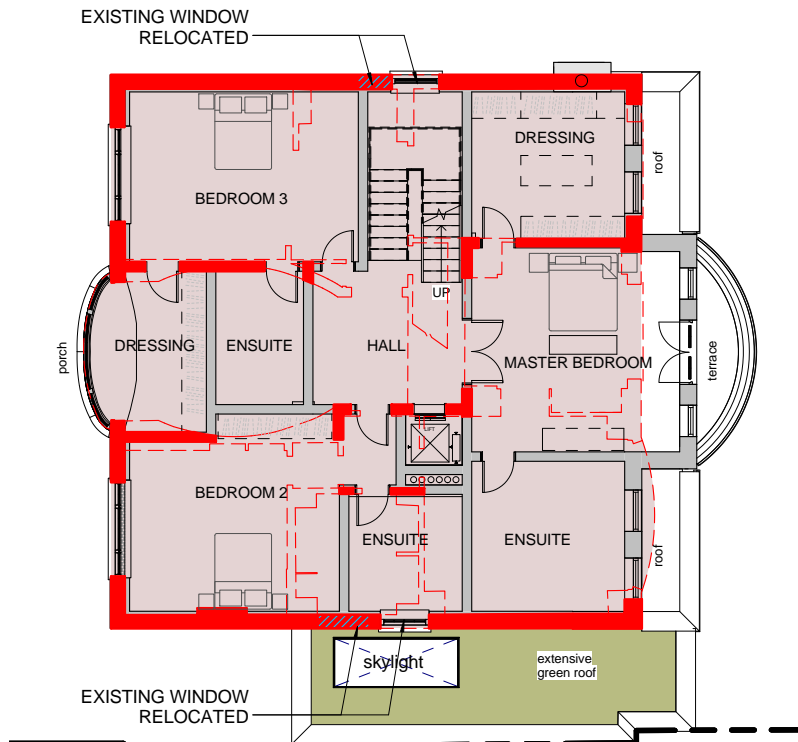
PROPOSED



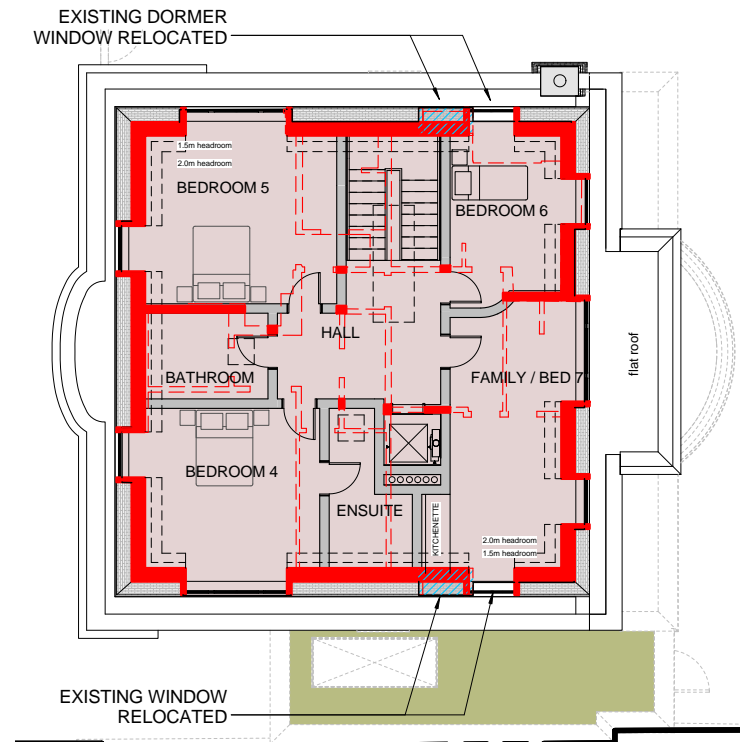
EXISTING



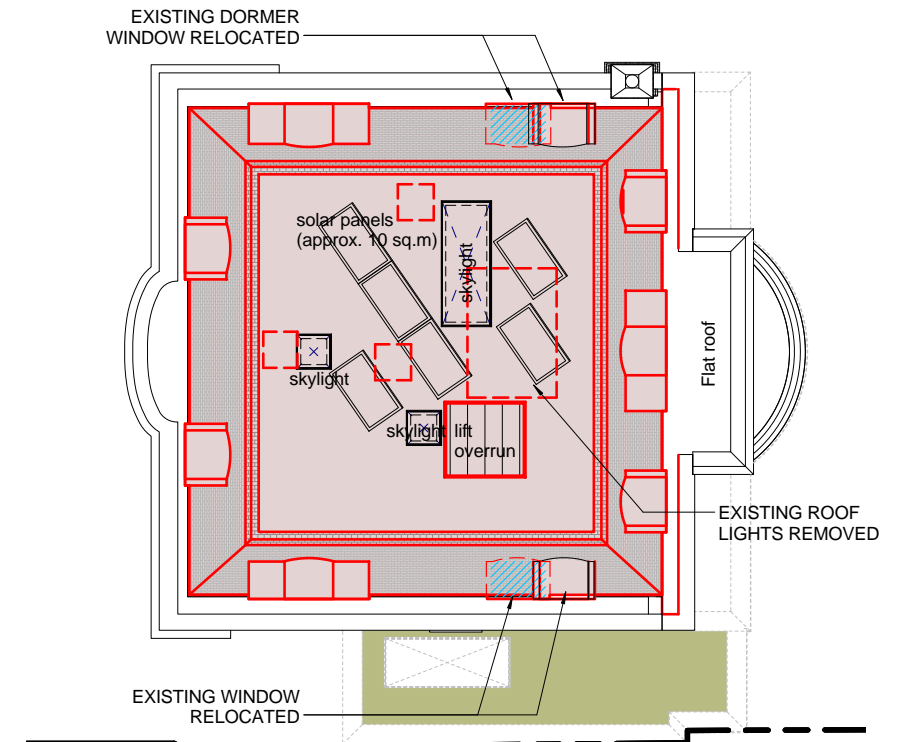
PROPOSED



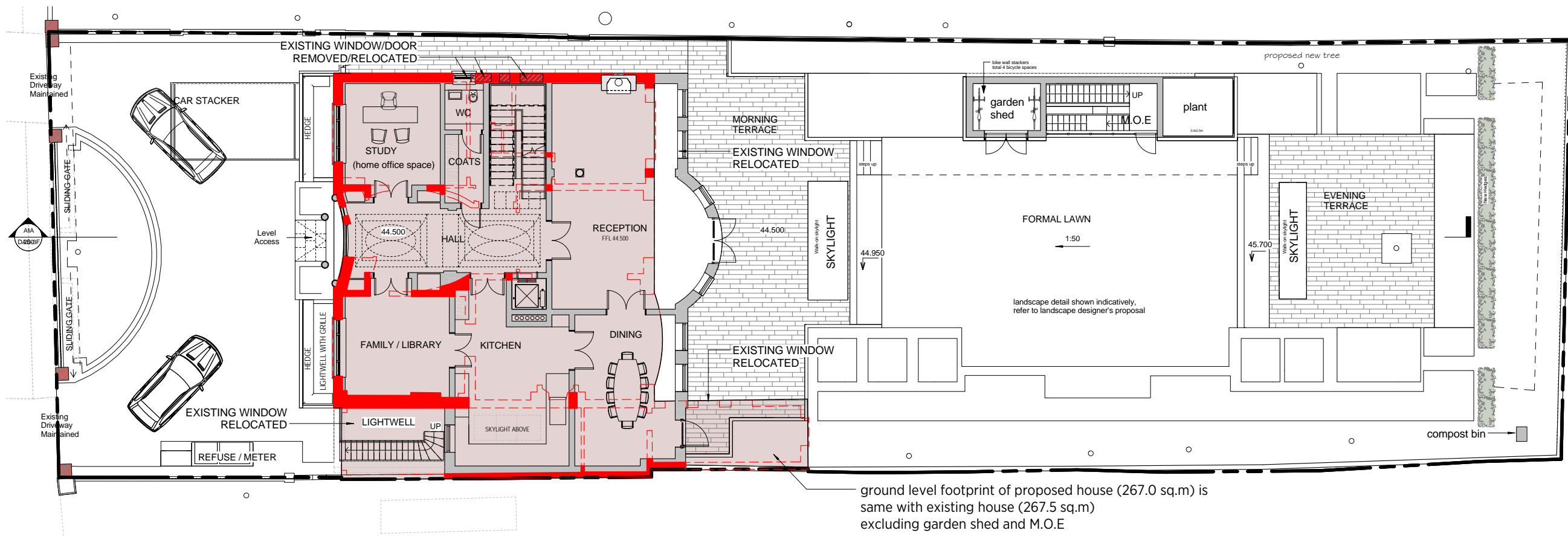
FIRST FLOOR PLAN



SECOND FLOOR PLAN



ROOF PLAN

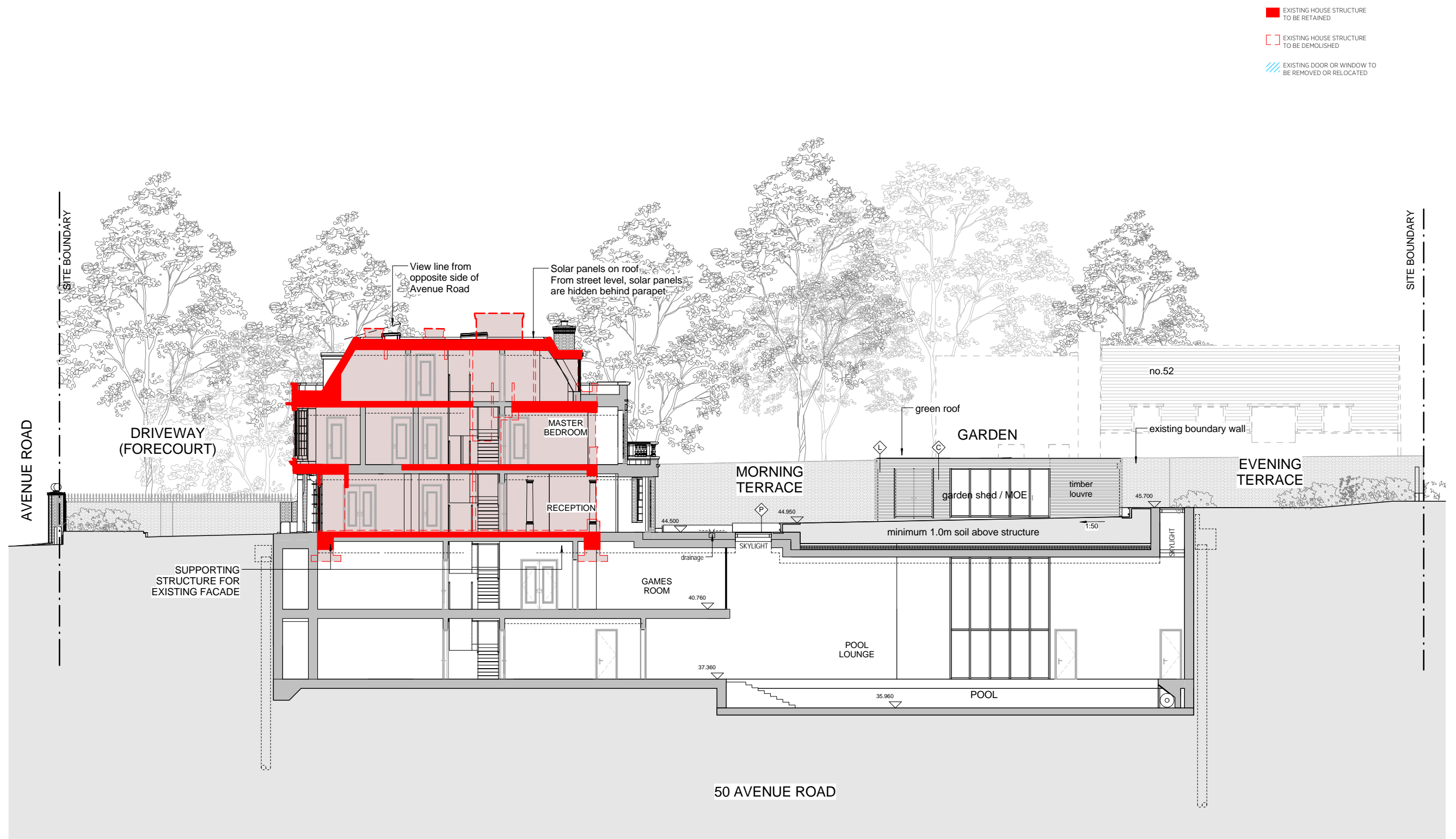


GROUND FLOOR PLAN

50 AVENUE ROAD

PLANNING SUBMISSION

3.0 DESIGN



SECTION AA (LONG SECTION)

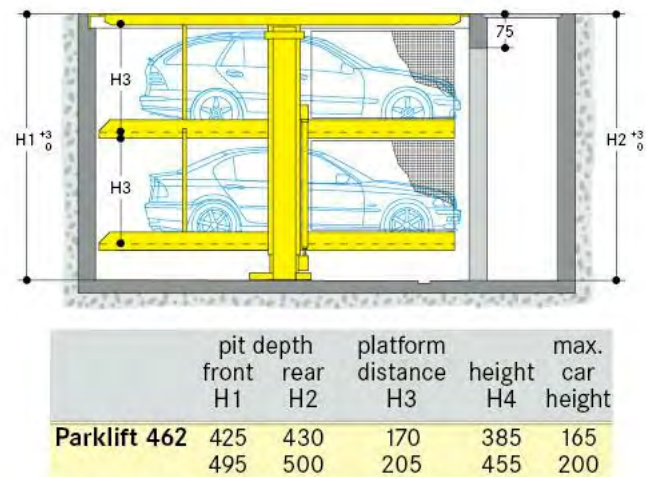


Data Sheet

Wöhr Parklift 461 462

Suitable for private houses, condominium and for retrofitting of old buildings. For permanent use only!
Horizontal even platforms.
Platform load max. 2600 kg (wheel load max. 650 kg).
The systems are designed for snow load zone II with up to 0.75 kN/m² in accordance to DIN 1055-5.

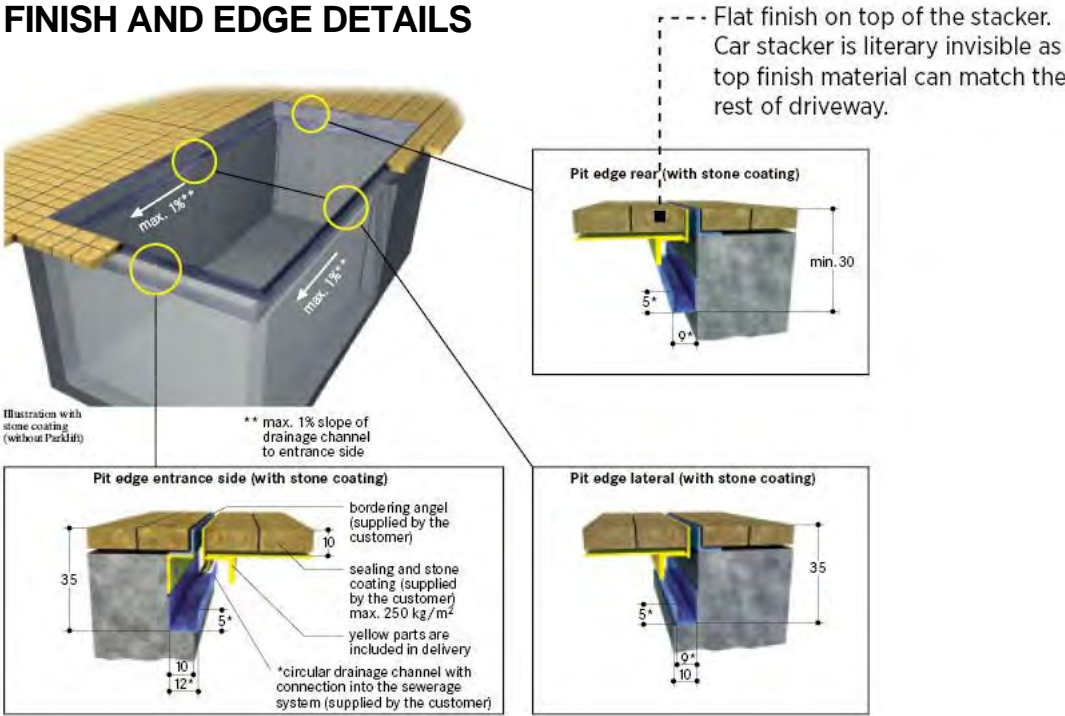
CAR STACKER DIMENSIONS



PHOTOS IN OPERATION



FINISH AND EDGE DETAILS



construction example

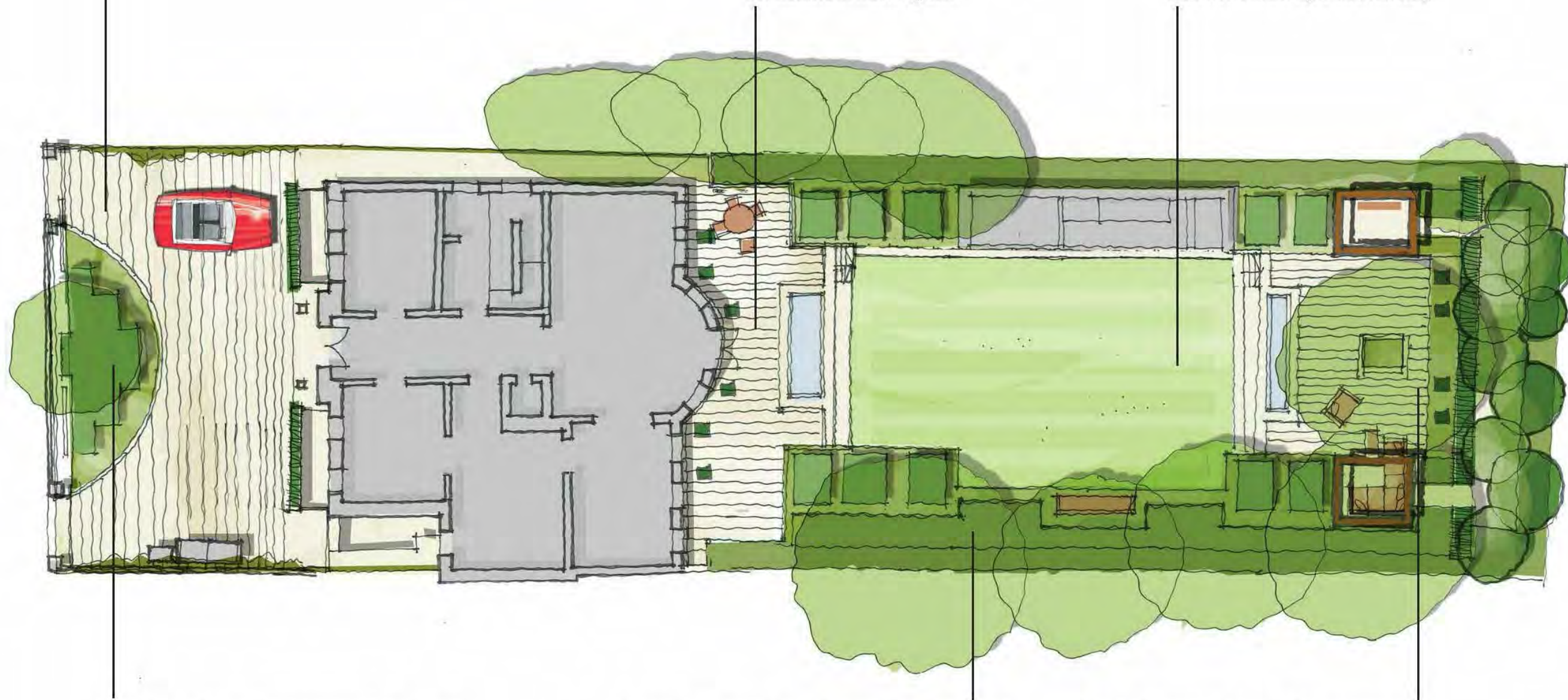


This is an example of one car stacker product. For illustration and design stage only. Currently, there are several other manufacturers who can do similar car stackers which can fit into the proposed scheme.

The front drive will be laid to high quality stone sets with climbers to the boundary walls.

To the back garden a terraced space extends out towards the lawn broken only by a frosted glass skylight to the basement, and punctuated by sculptural pots and clipped shrubs. This space is located so as to receive the maximum morning sun.

The lawn is raised above the morning terrace by 450mm thus providing a seating step facing into the terrace. A narrow stone path leads passed the Garden Pavilion to a terrace to the east of the scheme, providing access for both. Here too the level change is accommodated by a 450mm step.



Planting will be contemporary and structured with clipped shrubs with 'soft' ground covers as contrast.

The southern boundary of the garden will be planted out in a contemporary style with ground-cover drifts surrounding clipped tableaux of Box. The boundary wall will be planted with climbers and shrubs will provide further structure and verdant character.

The top terrace is bounded by an evergreen hedge, light canopy trees with year round folia interest to a woodland garden, and two pergola structures.









