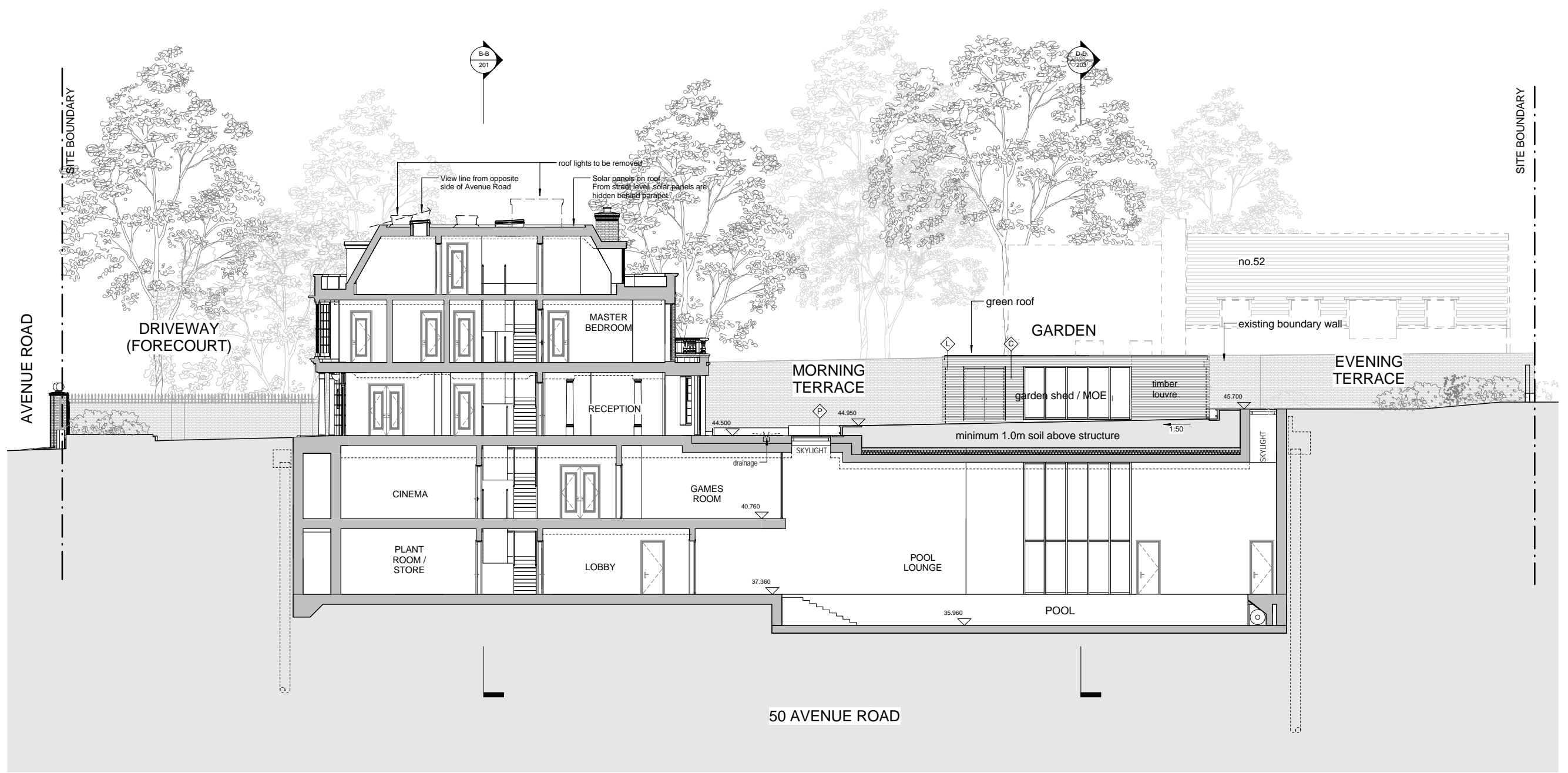
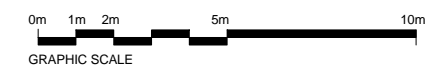


General notes:
 This drawing is copyright of KSR architects. This drawing must be read in conjunction with the Designer's Risk Assessment, specification and all other relevant documentation and drawings. KSR architects accept no liability for any expense, loss or damage of whatsoever nature and however arising from any variation made to this drawing or in the execution of the work to which it relates which has not been referred to them and their approval obtained.
 Do not scale from this drawing or the digital data, only figured dimensions are to be used. For Planning refer to linear scale.
 Check all dimensions on site prior to carrying out any works - advise any discrepancy
 Notes/Legends

[] EXISTING HOUSE STRUCTURE TO BE DEMOLISHED



SECTION AA (LONG SECTION)

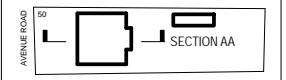


P 1 PLANNING SUBMISSION 07.07.14 SHY RS
 Rev Notes 06.mm.yj By Chd

© KSR architects

Stamp: PLANNING SUBMISSION

Key Plan



KSRARCHITECTS
 KSR Architects LLP
 14 Grosvenor Street London W1R 0ND
 Tel: +44 (0)20 7882 5000
 Email: info@ksrarchitects.com
 Website: www.ksrarchitects.com

Project: 50 AVENUE ROAD

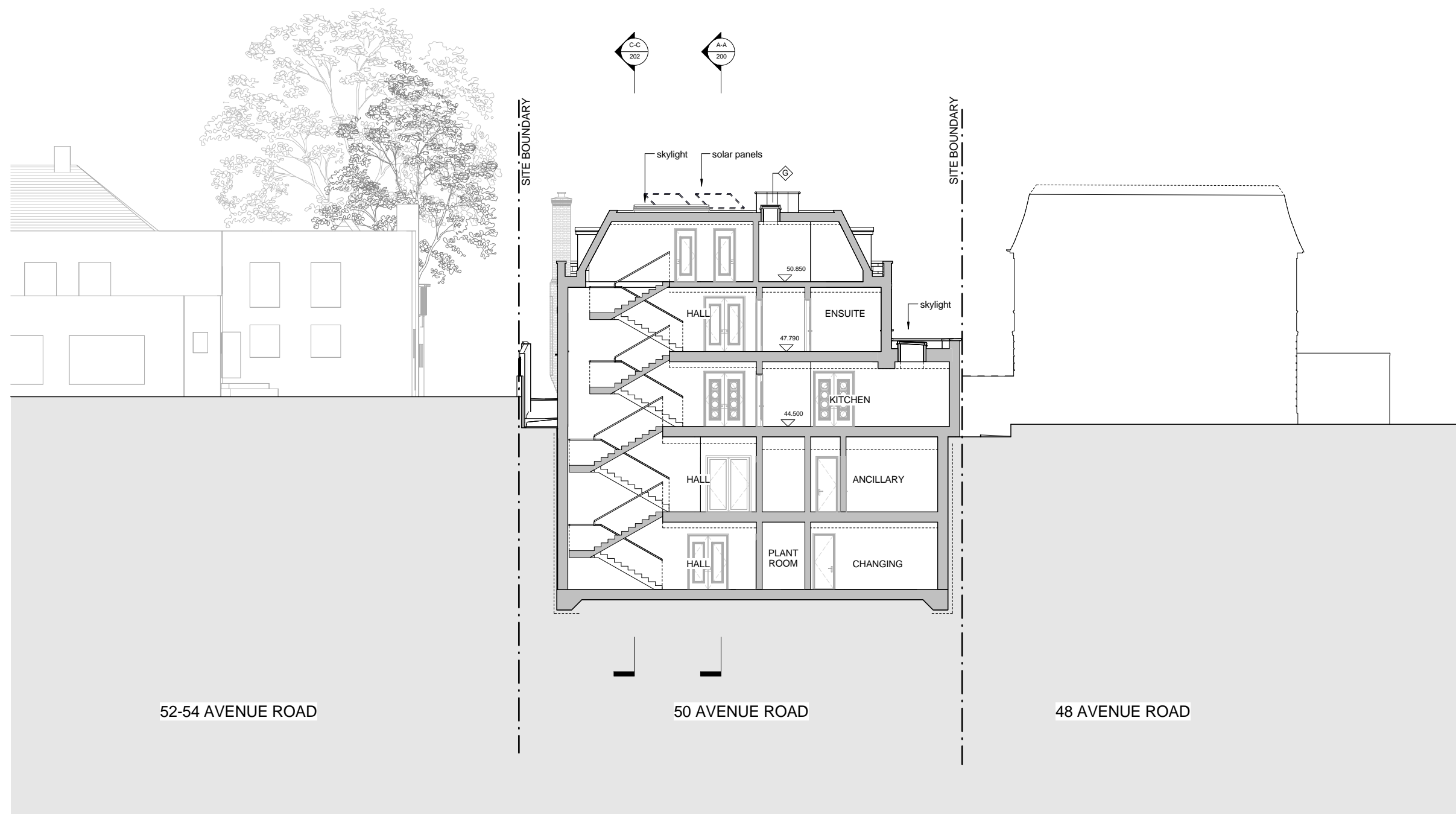
Title: PROPOSED SECTION AA

Date: JULY 2014 Drawn By: SHY Checked: RS

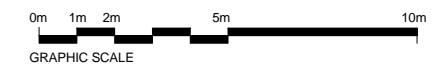
Scale: 1:100 @ A1 / 1:200 @ A3

Project Ref: AND Drawing No: AND - 200 Revision: P1

General notes:
 This drawing is copyright of KSR architects. This drawing must be read in conjunction with the Designer's Risk Assessment, specification and all other relevant documentation and drawings. KSR architects accept no liability for any expense, loss or damage of whatsoever nature and however arising from any variation made to this drawing or in the execution of the work to which it relates which has not been referred to them and their approval obtained.
 Do not scale from this drawing or the digital data, only figured dimensions are to be used. For Planning refer to linear scale.
 Check all dimensions on site prior to carrying out any works - advise any discrepancy
 Notes/Legends

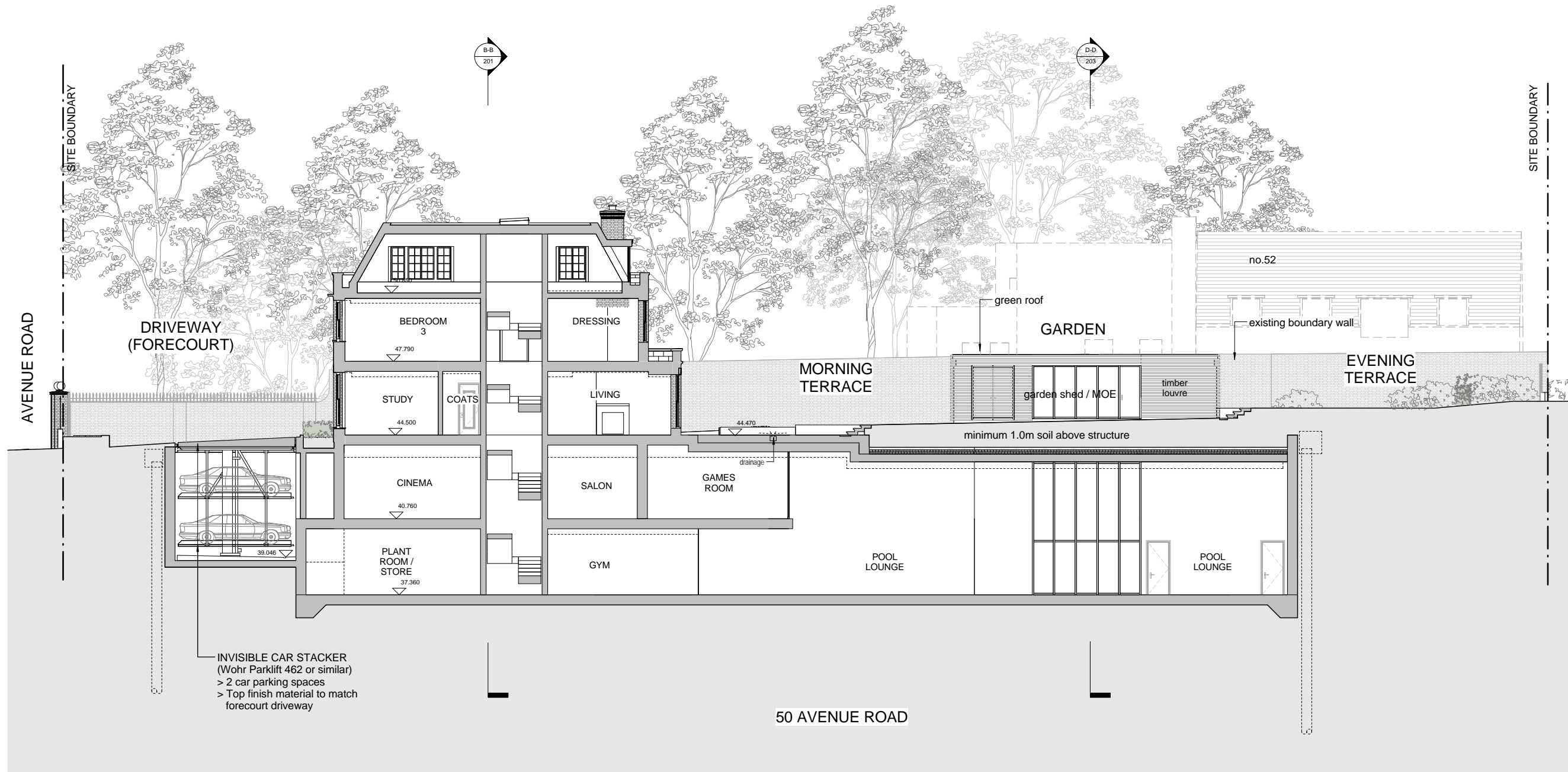


SECTION BB (CROSS SECTION)



P 1 PLANNING SUBMISSION		07.07.14 SHY RS
Rev	Notes	06.mm.yy By Chkd
© KSR architects		
Stamp		
PLANNING SUBMISSION		
Key Plan		
SECTION BB		
KSRARCHITECTS		
KSR Architects LLP 14 Grosvenor Street London W1R 0ND info@ksrarchitects.com t +44 (0)20 7882 5000 www.ksrarchitects.com		
Project		
50 AVENUE ROAD		
Title		
PROPOSED SECTION BB		
Date:	Drawn By:	Checked:
JULY 2014	SHY	RS
Scale:		
1: 100 @ A1 / 1: 200 @ A3		
Project Ref:	Drawing No:	Revision:
AND	AND - 201	P1

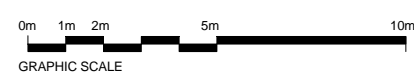
General notes:
 This drawing is copyright of KSR architects. This drawing must be read in conjunction with the Designer's Risk Assessment, specification and all other relevant documentation and drawings. KSR architects accept no liability for any expense, loss or damage of whatsoever nature and however arising from any variation made to this drawing or in the execution of the work to which it relates which has not been referred to them and their approval obtained.
 Do not scale from this drawing or the digital data, only figured dimensions are to be used. For Planning refer to linear scale.
 Check all dimensions on site prior to carrying out any works - advise any discrepancy
 Notes/Legends



INVISIBLE CAR STACKER
 (Wohr Parklift 462 or similar)
 > 2 car parking spaces
 > Top finish material to match
 forecourt driveway

50 AVENUE ROAD

SECTION BB (LONG SECTION)

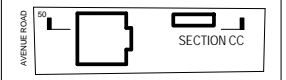


P 1 PLANNING SUBMISSION 07.07.14 SHY RS
 Rev Notes 06.mm.yj By Chd

© KSR architects

Stamp: PLANNING SUBMISSION

Key Plan



KSRARCHITECTS
 KSR Architects LLP
 14 Grosvenor Street
 London W1R 0ND
 info@ksrarchitects.com
 t +44 (0)20 7882 5000
 www.ksrarchitects.com

Project: 50 AVENUE ROAD

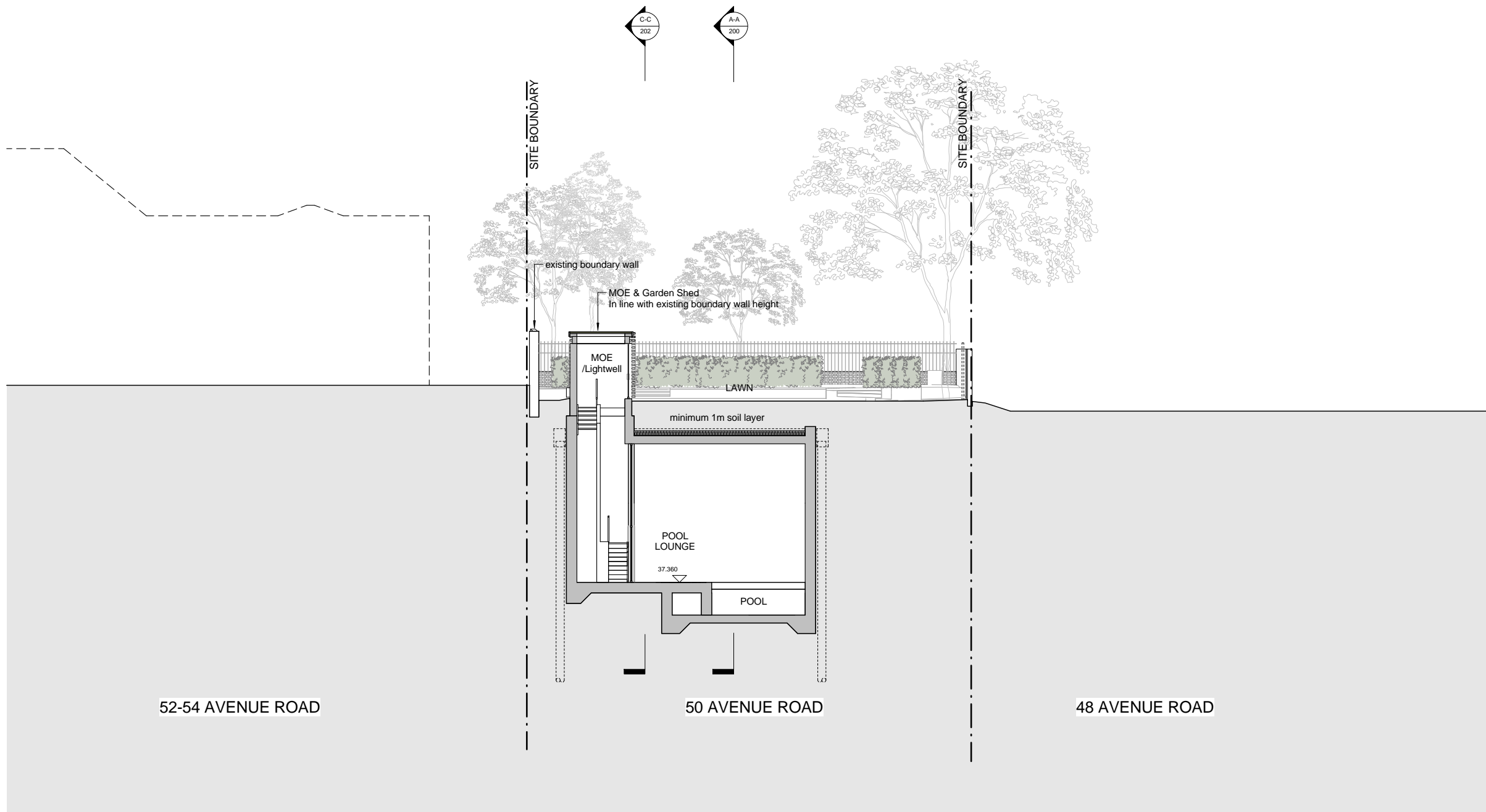
Title: PROPOSED SECTION CC

Date: JULY 2014 Drawn By: SHY Checked: SHY

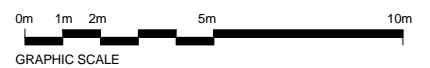
Scale: 1:100 @ A1 / 1:200 @ A3

Project Ref: AND Drawing No: AND - 202 Revision: P1

General notes:
 This drawing is copyright of KSR architects. This drawing must be read in conjunction with the Designer's Risk Assessment, specification and all other relevant documentation and drawings. KSR architects accept no liability for any expense, loss or damage of whatsoever nature and however arising from any variation made to this drawing or in the execution of the work to which it relates which has not been referred to them and their approval obtained.
 Do not scale from this drawing or the digital data, only figured dimensions are to be used. For Planning refer to linear scale.
 Check all dimensions on site prior to carrying out any works - advise any discrepancy
 Notes/Legends



SECTION DD (CROSS SECTION)

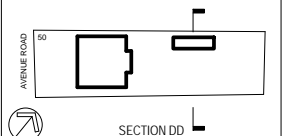


P 1 PLANNING SUBMISSION 07.07.14 SHY RS
 Rev Notes 06.mm.vj By Chd

© KSR architects
 Stamp

PLANNING SUBMISSION

Key Plan



KSRARCHITECTS
 KSR Architects LLP
 14 Grosvenor Street
 London W1R 0ND
 info@ksrarchitects.com
 t +44 (0)20 7882 5000
 www.ksrarchitects.com

Project:
 50 AVENUE ROAD

Title:
 PROPOSED SECTION DD

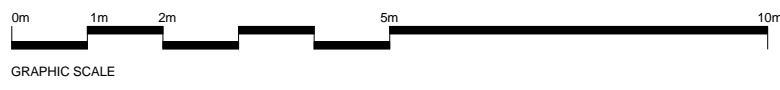
Date: JULY 2014 Drawn By: SHY Checked: SHY

Scale: 1:100 @ A1 / 1:200 @ A3

Project Ref: AND Drawing No: AND - 203 Revision: P1



PROPOSED FRONT (SOUTH) ELEVATION



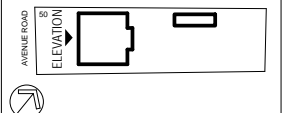
General notes:
 This drawing is copyright of KSR architects. This drawing must be read in conjunction with the Designer's Risk Assessment, specification and all other relevant documentation and drawings. KSR architects accept no liability for any expense, loss or damage of whatsoever nature and however arising from any variation made to this drawing or in the execution of the work to which it relates which has not been referred to them and their approval obtained.
 Do not scale from this drawing or the digital data, only figured dimensions are to be used. For Planning refer to linear scale.
 Check all dimensions on site prior to carrying out any works - advise any discrepancy

- Notes/Legends
- KEYNOTE (MATERIAL REFERENCE)**
- A FACE MASONRY
 - B BRICK WALLING
 - C METAL CLADDING
 - D FLAT GAUGED BRICK ARCH
 - E CAST STONE COPING
 - F CAST STONE DETAILS
 - G LEAD LINED DORMER
 - H CLAY TILE ROOFING
 - J HARDWOOD TIMBER DOOR
 - K POWDER COATED METALWORKS
 - L TIMBER LOUVRE/GATE/FENCE
 - M DOUBLE GLAZED TIMBER SASH WINDOW
 - N DOUBLE GLAZED TIMBER DOOR
 - P SKY LIGHT - WALK ON
 - Q SKY LIGHT

P 1 PLANNING SUBMISSION 07.07.14 SHY RS
 Rev Notes 06.mm.yy By Chd

© KSR architects
 Stamp
PLANNING SUBMISSION

Key Plan



KSRARCHITECTS
 KSR Architects LLP
 14 Grosvenor Street London W1R 0ND
 Tel: +44 (0)20 7882 5000
 Email: info@ksrarchitects.com
 Website: www.ksrarchitects.com

Project:
50 AVENUE ROAD

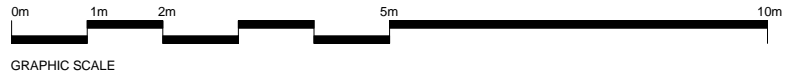
Title:
PROPOSED FRONT ELEVATION

Date: JULY 2014 Drawn By: SHY Checked: GJ

Scale: 1:50 @ A1 / 1:100 @ A3
 Project Ref: AND Drawing No: AND - 300 Revision: P1



PROPOSED REAR (NORTH) ELEVATION



General notes:
 This drawing is copyright of KSR architects. This drawing must be read in conjunction with the Designer's Risk Assessment, specification and all other relevant documentation and drawings. KSR architects accept no liability for any expense, loss or damage of whatsoever nature and however arising from any variation made to this drawing or in the execution of the work to which it relates which has not been referred to them and their approval obtained.
 Do not scale from this drawing or the digital data, only figured dimensions are to be used. For Planning refer to linear scale.
 Check all dimensions on site prior to carrying out any works - advise any discrepancy
 Notes/Legends

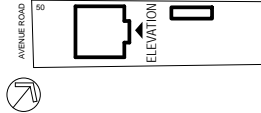
KEYNOTE (MATERIAL REFERENCE)

- A FACE MASONRY
- B BRICK WALLING
- C METAL CLADDING
- D FLAT GAUGED BRICK ARCH
- E CAST STONE COPINGS
- F CAST STONE DETAILS
- G LEAD LINED DORMER
- H CLAY TILE ROOFING
- J HARDWOOD TIMBER DOOR
- K POWDER COATED METALWORKS
- L TIMBER LOUVRE/GATE/FENCE
- M DOUBLE GLAZED TIMBER SASH WINDOW
- N DOUBLE GLAZED TIMBER DOOR
- P SKY LIGHT - WALK ON
- Q SKY LIGHT

P 1 PLANNING SUBMISSION 07.07.14 SHY RS
 Rev Notes 06.mm.yy By Chd

© KSR architects
 Stamp PLANNING SUBMISSION

Key Plan



KSRARCHITECTS
 KSR Architects LLP
 14 Grosvenor Street London W1R 0ND
 t +44 (0)20 7882 5000
 m ksrarchitects.com
 w www.ksrarchitects.com

Project: 50 AVENUE ROAD

Title: PROPOSED REAR ELEVATION

Date: JULY 2014 Drawn By: SHY Checked: GJ

Scale: 1:50 @ A1 / 1:100 @ A3

Project Ref: AND Drawing No: AND - 301 Revision: P1



PROPOSED SIDE (EAST) ELEVATION



GRAPHIC SCALE

General notes:
 This drawing is copyright of KSR architects. This drawing must be read in conjunction with the Designer's Risk Assessment, specification and all other relevant documentation and drawings. KSR architects accept no liability for any expense, loss or damage of whatsoever nature and however arising from any variation made to this drawing or in the execution of the work to which it relates which has not been referred to them and their approval obtained.
 Do not scale from this drawing or the digital data, only figured dimensions are to be used. For Planning refer to linear scale.
 Check all dimensions on site prior to carrying out any works - advice any discrepancy
 Notes/Legends

KEYNOTE (MATERIAL REFERENCE)

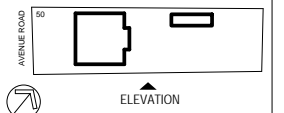
- A FACE MASONRY
- B BRICK WALLING
- C METAL CLADDING
- D FLAT GAUGED BRICK ARCH
- E CAST STONE COPING
- F CAST STONE DETAILS
- G LEAD LINED DORMER
- H CLAY TILE ROOFING
- J HARDWOOD TIMBER DOOR
- K POWDER COATED METALWORKS
- L TIMBER LOUVRE/GATE/FENCE
- M DOUBLE GLAZED TIMBER SASH WINDOW
- N DOUBLE GLAZED TIMBER DOOR
- P SKY LIGHT - WALK ON
- Q SKY LIGHT

P 1 PLANNING SUBMISSION 07.07.14 SHY RS
 Rev Notes 06.mm.yj By CHd

© KSR architects
 Stamp

PLANNING SUBMISSION

Key Plan



KSRARCHITECTS
 KSR Architects LLP
 14 Grosvenor Street London W1R 0ND
 info@ksrarchitects.com
 t +44 (0)20 7882 5000
 www.ksrarchitects.com

Project:
 50 AVENUE ROAD

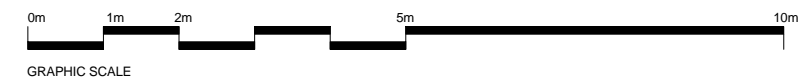
Title:
 PROPOSED SIDE ELEVATION TO NO.48

Date: JULY 2014 Drawn By: SHY Checked: GJ
 Scale: 1:50 @ A1 / 1:100 @ A3

Project Ref: AND Drawing No: AND - 302 Revision: P1



PROPOSED SIDE (WEST) ELEVATION

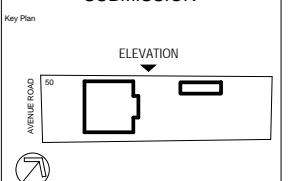


General notes:
 This drawing is copyright of KSR architects. This drawing must be read in conjunction with the Designer's Risk Assessment, specification and all other relevant documentation and drawings. KSR architects accept no liability for any expense, loss or damage of whatsoever nature and however arising from any variation made to this drawing or in the execution of the work to which it relates which has not been referred to them and their approval obtained.
 Do not scale from this drawing or the digital data, only figured dimensions are to be used. For Planning refer to linear scale.
 Check all dimensions on site prior to carrying out any works - advise any discrepancy
 Notes/Legends

- KEYNOTE (MATERIAL REFERENCE)
- A FACE MASONRY
 - B BRICK WALLING
 - C METAL CLADDING
 - D FLAT GAUGED BRICK ARCH
 - E CAST STONE COPING
 - F CAST STONE DETAILS
 - G LEAD LINED DORMER
 - H CLAY TILE ROOFING
 - J HARDWOOD TIMBER DOOR
 - K POWDER COATED METALWORKS
 - L TIMBER LOUVRE/GATE/FENCE
 - M DOUBLE GLAZED TIMBER SASH WINDOW
 - N DOUBLE GLAZED TIMBER DOOR
 - P SKY LIGHT - WALK ON
 - Q SKY LIGHT

P 1 PLANNING SUBMISSION 07.07.14 SHY RS
 Rev Notes 06.mm.yy By Chd

© KSR architects
 Stamp



KSRARCHITECTS
 KSR Architects LLP
 14 Grosvenor Street
 London W1R 0ND
 info@ksrarchitects.com
 t +44 (0)20 7882 5000
 www.ksrarchitects.com

Project:
 50 AVENUE ROAD

Title:
 PROPOSED SIDE ELEVATION TO NO.52

Date: JULY 2014 Drawn By: SHY Checked: RS
 Scale: 1:50 @ A1 / 1:100 @ A3

Project Ref: AND Drawing No: AND - 303 Revision: P1