

**DEL CARMEN®**  
**EXCEPTIONAL UNFADING ROOFING SLATE**

S S Q







# Contents

|                                 |    |
|---------------------------------|----|
| SSQ.....                        | 2  |
| Del Carmen .....                | 3  |
| Trusted source.....             | 4  |
| Quality assurance .....         | 5  |
| Technical support .....         | 6  |
| Environment .....               | 7  |
| Product performance .....       | 8  |
| Selections and thicknesses..... | 10 |
| Dimensions and weights.....     | 12 |





## SSQ

SSQ is one of the world's leading quarriers and suppliers of high-grade, unfading natural roofing slate. Our principal markets are in Europe and North America. Our exports are as far afield as Australia, Trinidad, Norway and Japan - in all, over 20 countries.

Owners, architects and installers choose our slates for their:

- Exceptional colour stability.
- Exceptional weather resistance (surpassing the strictest international standards.)
- Suitability for significant historic and distinctive contemporary structures.

Del Carmen, featured here, is one of our signature slates.



*SSQ Headquarters, London*





*Cavendish Lodge, Bath, England*

## Del Carmen

Del Carmen is a single, large quarry—not a marketing brand of a quarry group. We draw from one uniform slate seam (vein)—not from several quarries in a generic deposit sold under one mark.

With over 100 quarries, Spain is the world's largest slate producer, offering slates of all grades. Some suppliers group quarries under a single name or number. Slate from one quarry may be substituted for slate from another. Similar in appearance, characteristics may differ. Often, published addresses are of offices or mills—not of quarries.

At Del Carmen, our name is our address. Our slate comes from the same quarry—from project to project and from decade to decade—guaranteed. Visitors are welcome:

Pizarras Del Carmen:  
Ctra. León s/n, 24.746 La Baña, Spain.



*Del Carmen quarry, Spain*





## Trusted source

Accepted by English Heritage and Historic Scotland

Del Carmen is one of the few slates certified for use by English Heritage and Historic Scotland, the leading authorities charged with preserving Britain's landmark structures, such as Buckingham Palace and The British Museum.

Accepted as equivalent to Welsh slate

Del Carmen was the first, and remains one of the few, imported slates certified for use in Snowdonia National Park, in Northwest Wales, heartland of the famed slate district.



*St Andrew's park, Kent, England*





*Police Station, Brecon, Wales*

## Quality assurance

### Tested

Del Carmen has met or surpassed the strictest testing requirements. It has achieved the highest classifications in the US, the UK and France. (See page 8 for details.)

### Guaranteed

We stand behind our slate. Consistent with its history of use and test results, Del Carmen's Ultra range is guaranteed to last at least 100 years.







## Technical Support

SSQ's technical support team can help you achieve a range of effects on straight or curved surfaces, using standard or special shapes, random widths and/or graduated lengths. Our team is able to supply detailed sketches and advice, concerning specification, quantity take-off, cost-comparison and overall strategy, to achieve an optimum installation.



*Lisburn Square, Devon, England*





*Channel Island, Jersey, UK*

## Environment

Roofing slate is naturally green. It is non-toxic, not petrol based and non-leaching. Other products have to be synthesized and then processed. Already formed, natural slate removes synthesis from the equation, reducing CO2 emissions.

Del Carmen's exceptional longevity allows it to do the work of 2, 3 or 4 other roofs. Doing more with less: This is the essence of sustainability.

But we do not rest on the laurels of our exceptional stone. Through a policy of continual improvement, our yields have steadily climbed over the years. We now help to set the standard for efficiency in the slate sector.



*Post Office Square, Kent, England*



# Product performance

## Surpasses International standards

Del Carmen has been tested and has met or surpassed the strictest international quality standards:

- US: ASTM C 406 - Grade S1 (highest)
- UK: BS EN 12326 – Achieves A1-T1-S1 (highest classification)
- France: NF 228 - Pass (highest)

## Characteristics

Del Carmen is highly resistant to the physical and chemical processes that age building stone of any type. Del Carmen slate is characterized by:

- **Low water absorption** (achieves A1 classification)

Del Carmen's low water absorption allows it to withstand freeze-thaw cycling, as well as salt exposure that can weaken more absorbent slates. Del Carmen is well-suited to the harshest climates.

- **High weather resistance** (achieves S1 classification)

Del Carmen's exceptional weather (acid) resistance makes it nearly impervious to atmospheric pollutants.

- **High modulus of rupture** (achieves modulus of rupture greater than 60MPa)

Del Carmen is unusually strong, surpassing the strictest test requirements. Also, the slate is cut along its grain – an extra precaution that maximizes load resistance.

- **A virtual absence of deleterious minerals such as pyrite and calcite** (achieves T1 classification)

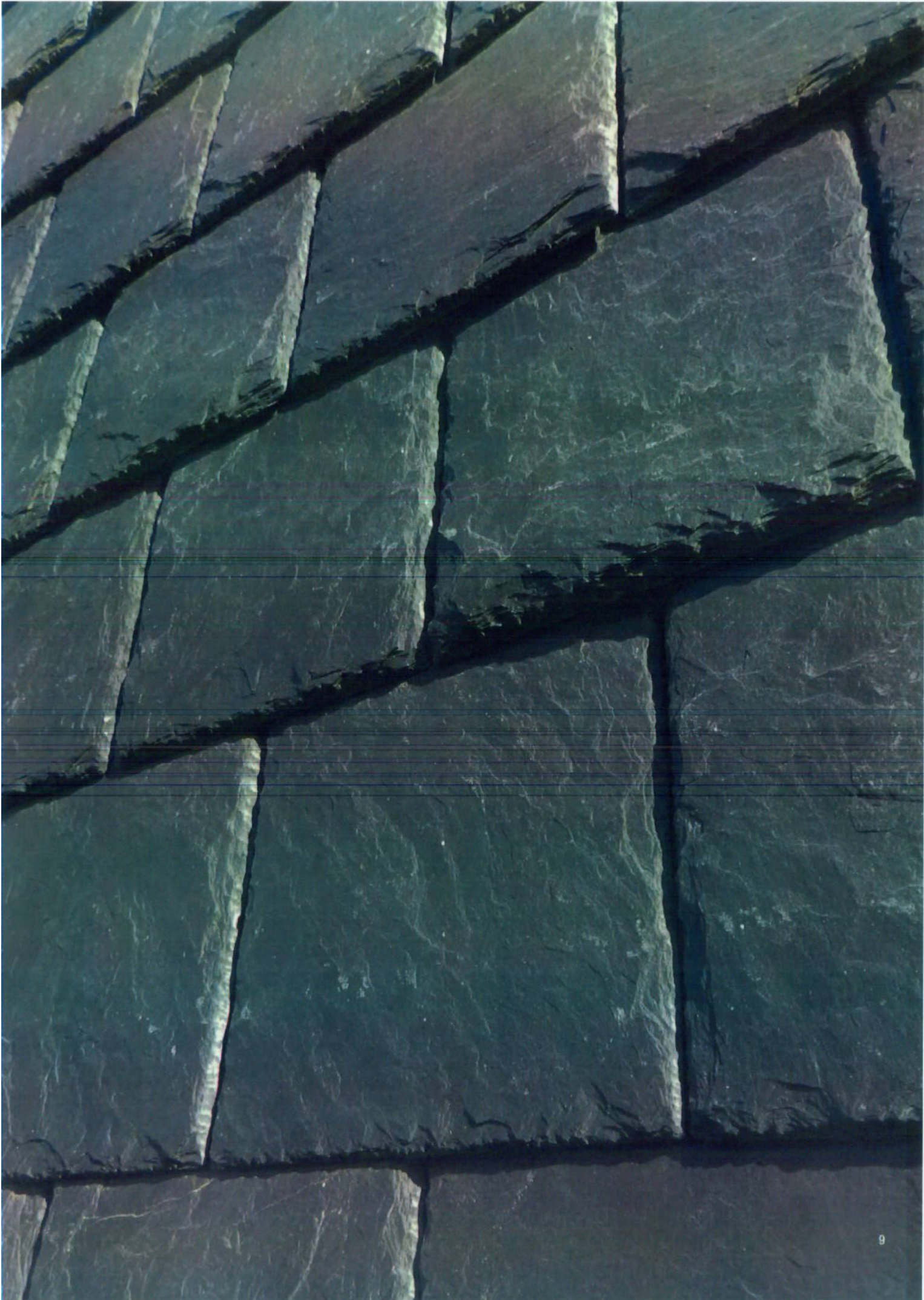
Del Carmen's virtual absence of deleterious minerals prevents fading and weakening caused by oxidation and mineral conversion. (Mineral conversion occurs, for example, when calcite in lower-grade slate converts to gypsum, which in turn swells and stresses the slate's substrate causing it to degrade prematurely.)



*SSQ Eagle, Berlin, Germany*









# Selections and thicknesses

## Heavy Ultra

**8-10mm**

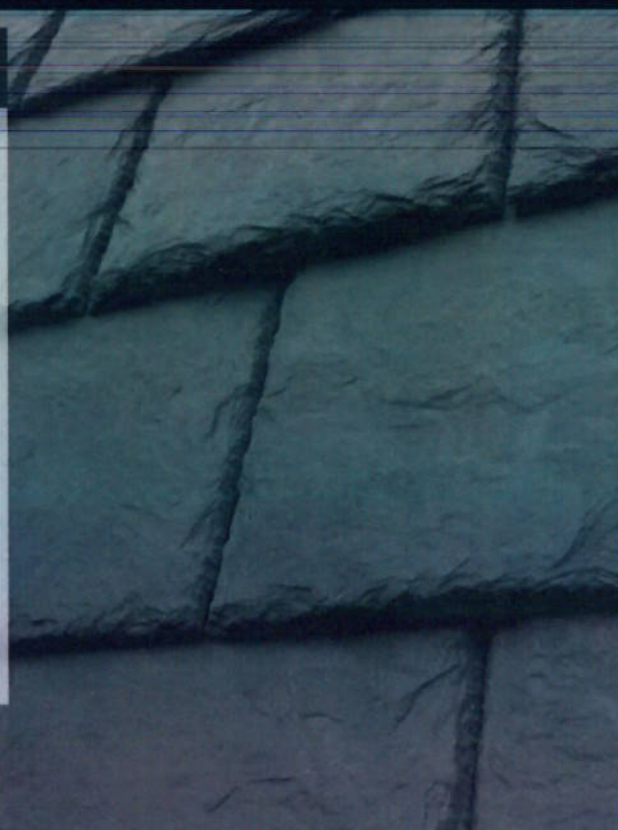
Pre-sorted. Maximum consistency of thickness and planarity at an extra cost. Strong shadow-line; appropriate for most designs.



## Heavy

**7-9mm**

Robust. Moderate consistency of thickness and planarity for a textured presentation and an especially strong shadow-line; appropriate for most designs.





# Selections and thicknesses

## Ultra

### 5-6mm

Pre-sorted. Maximum consistency of thickness and planarity at an extra cost for the most subtle presentation; especially appropriate for mansard and other steep roofs with minimum foot traffic, or where weight is a concern.



## First

### 5-6mm

Minimum sorting needed. Highly consistent thickness and planarity at a moderate charge for a subtle presentation; appropriate for mansard and other steep roofs with minimum foot traffic, or where weight is a concern.



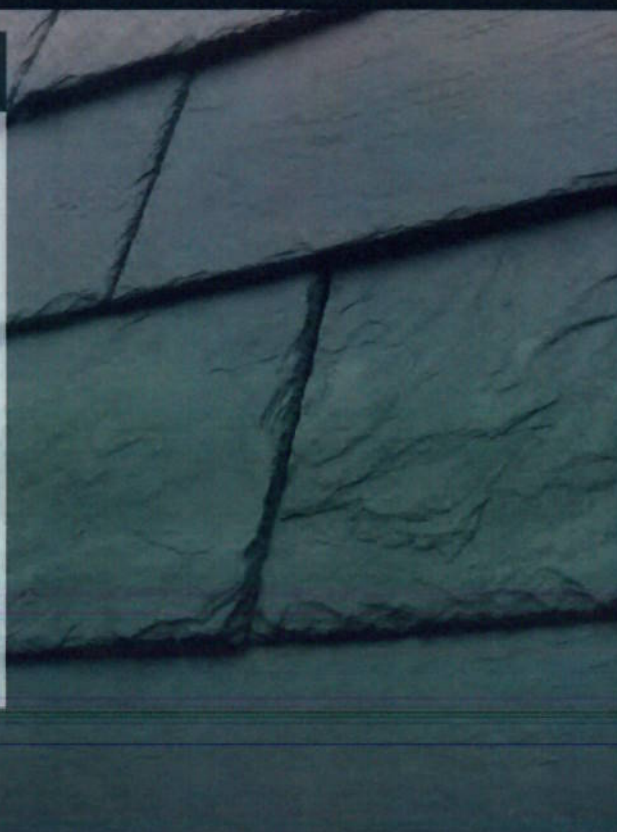


# Selections and thicknesses

## Standard

### 5-7mm

Customary sorting recommended. Moderate variances in thickness and planarity for a textured presentation and a moderate cost; especially appropriate for mansard and other steep roofs with minimum foot traffic, or where weight is a concern.



## Dimensions and weights\*

| Size<br>(inches) | Size<br>(mm) | Selection    | thickness<br>(mm) | weight per m2<br>(kg) |
|------------------|--------------|--------------|-------------------|-----------------------|
| 24x12            | 600x300      | Ultra        | 5-6               | 36.5                  |
| 20x12            | 500x300      | First        | 5-6               | 40                    |
| 20x10            | 500x250      | Standard     | 5-7               | 42                    |
| 18x12            | 450x300      | Heavy        | 7-9               | 45                    |
| 16x10            | 400x250      | Heavy        | 8-10              | 55                    |
| 16x8             | 400x200      | Heavy, Ultra | 8-10              | 57                    |
| 14x8             | 350x200      |              |                   |                       |
| 12x8             | 300x200      |              |                   |                       |

Please contact us if you require other sizes, thicknesses or shapes.

\*All dimensions and weights are nominal approximations. Slates are cut to metric measure.

## Notes

Colours and textures have been rendered as accurately as possible; the photographic process and the nature of natural stone prevent exact representations.

Being a natural product, slate's physical and chemical characteristics can vary.





*Private residence, Berlin, Germany*



*Penoyre House, Brecon, Wales*



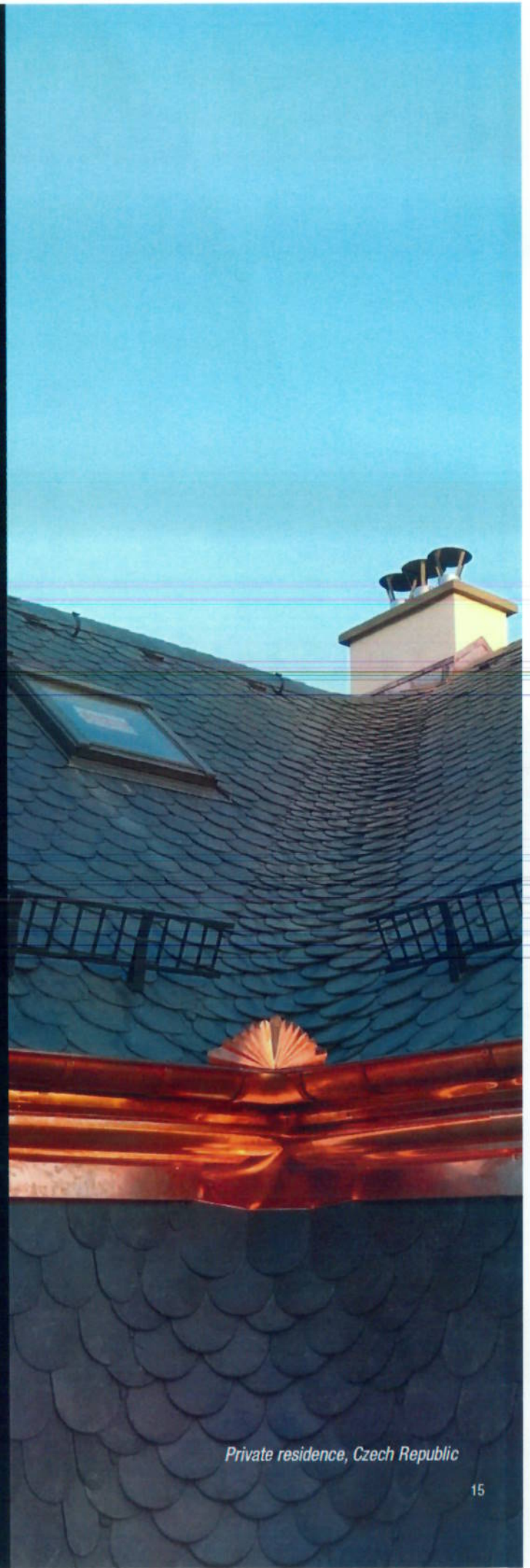


*Private residence, Trinidad*



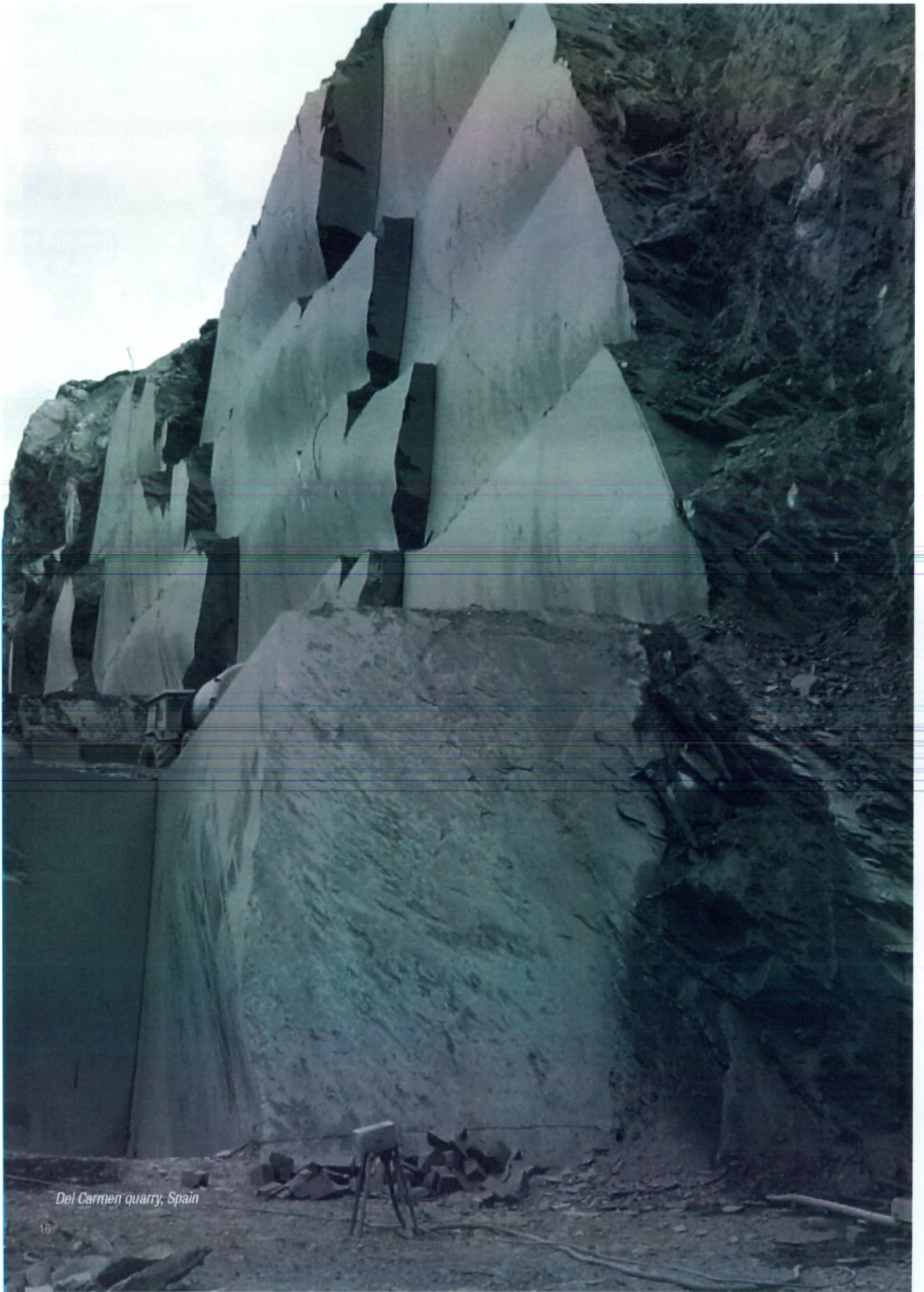
*Private residence, Istanbul, Turkey*





*Private residence, Czech Republic*





*Del Carmen quarry, Spain*



#### **SSQ Headquarters**

SSQ Group  
301 Elveden road  
Park Royal  
London  
NW10 7SS

T +44 (0) 208 961 7725  
F +44 (0) 208 965 7013  
E [info@ssq.co.uk](mailto:info@ssq.co.uk)  
[www.ssqgroup.com](http://www.ssqgroup.com)

#### **Quarries**

Del Carmen  
Pizarras Del Carmen:  
Crrta, Leon s/n, 24.746  
La Baña, Spain

Riverstone  
Ruta 7 - Km. 781.5  
Juana Koslay  
(5701) San Luis  
República Argentina





© 2012 SSQ Group. All rights reserved.