

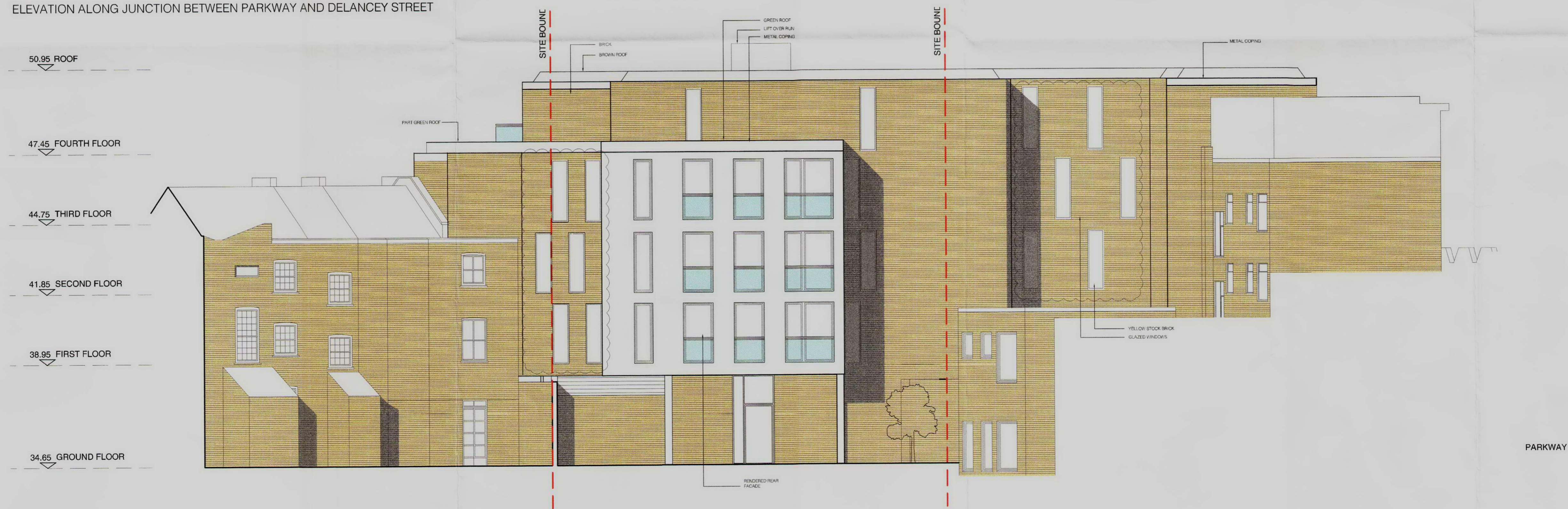
86-88 DELANCEY STREET
LONDON

PROPOSED
ELEVATIONS

PROPOSED:
NON MATERIAL
AMENDMENTS TO
APP. REF.
2008/0718/P



ELEVATION ALONG JUNCTION BETWEEN PARKWAY AND DELANCEY STREET



REAR ELEVATION

NICK BAKER ARCHITECTS

3rd Floor
11 Newborough St
London EC1V 6AN

Scale 1:100 @ A1 Drawing No. P-076-02

Date 13.02.14

Job No. 070B

© Nick Baker Architects