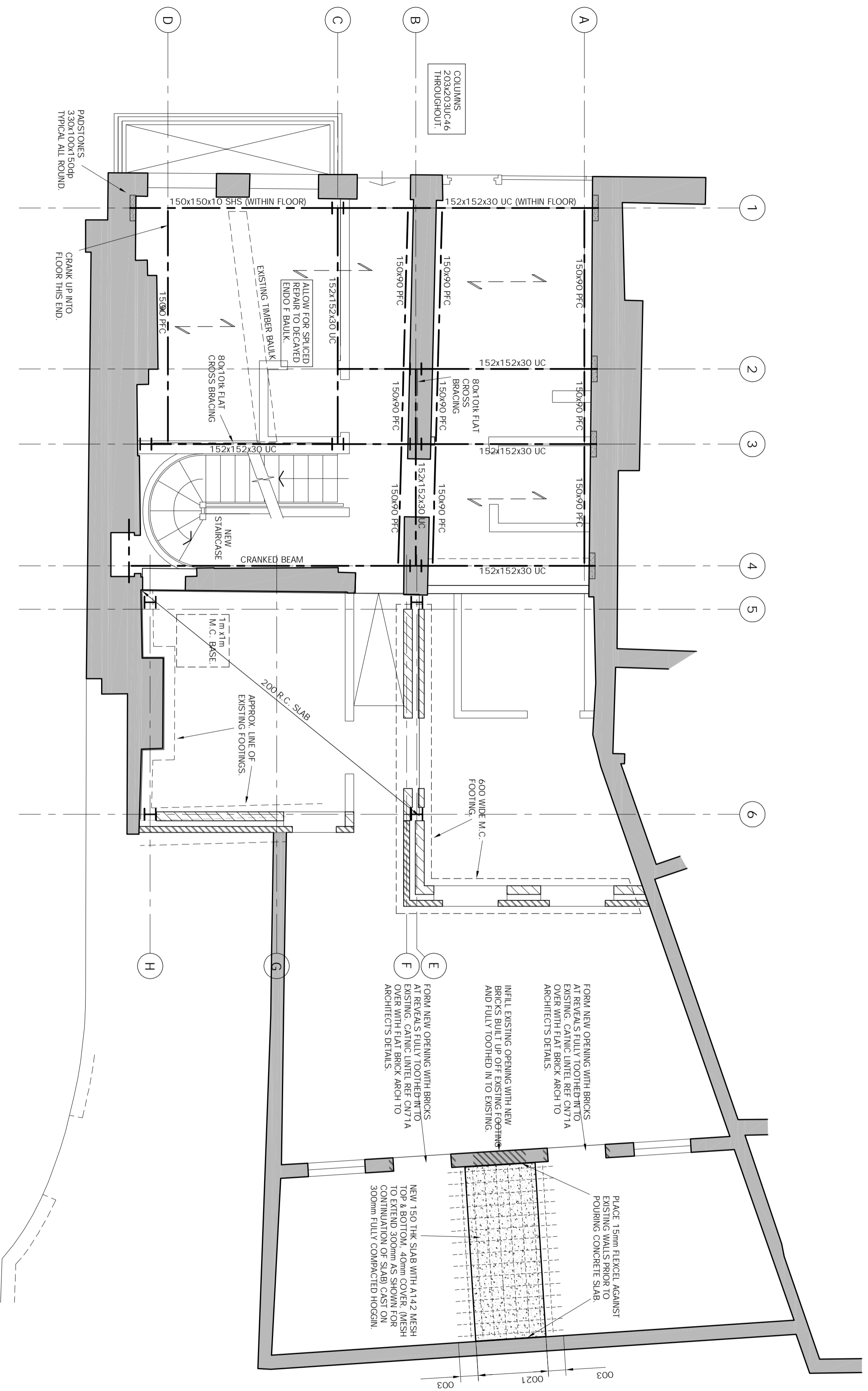


PRELIMINARY

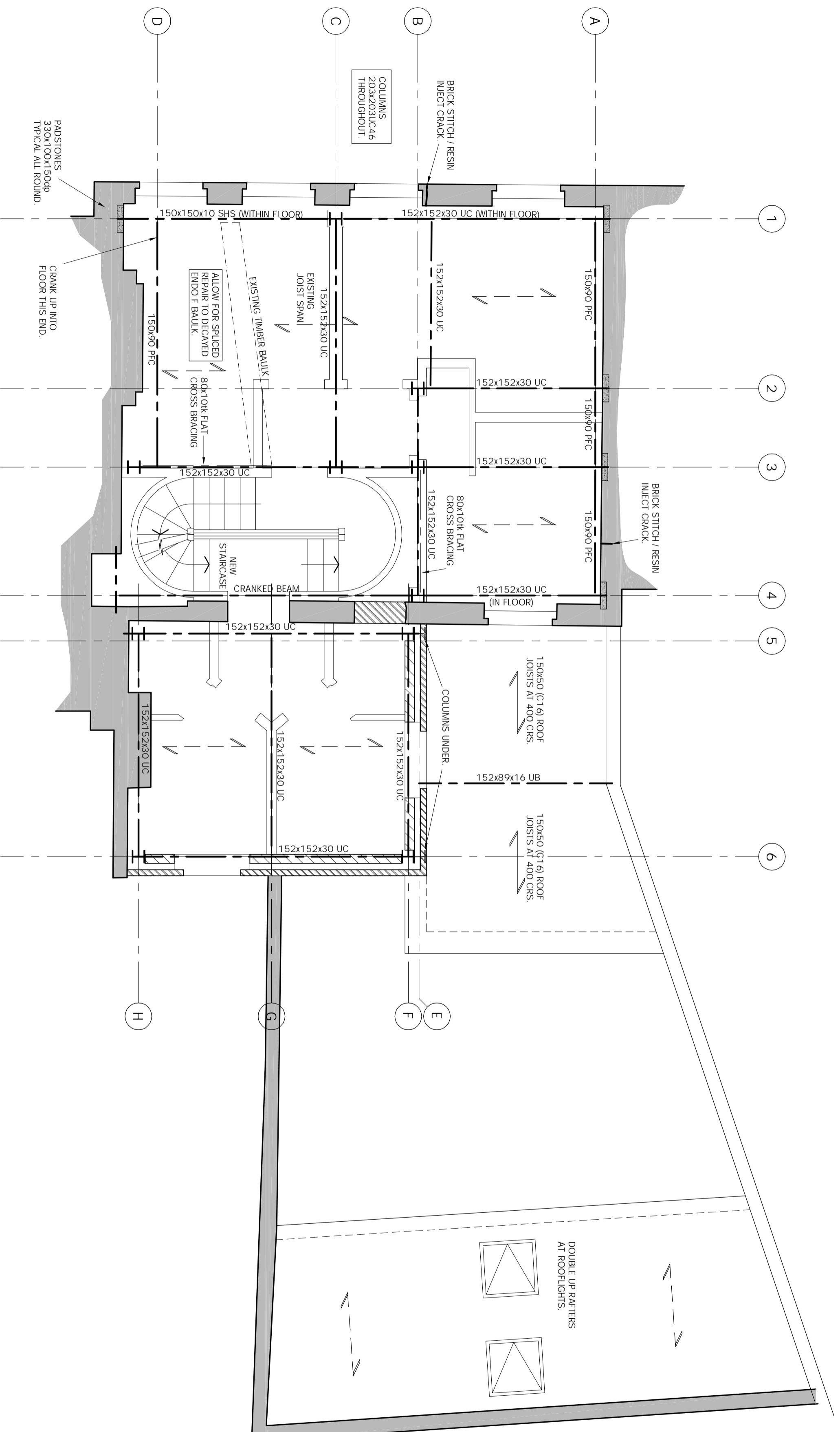
MICHAEL CHESTER & PARTNERS
Consulting Civil and Structural Engineers
8 Hale Lane London NW7 3NX tel 020 8959 9119 fax 020 8959 9662
BASEMENT SCHEME (NO ADDITIONAL B/MNT).

Date	March '14	Drawn	PM	Scale	1:50@A3	Project	65 SWINTON STREET LONDON WC1
Rev		13052/101					



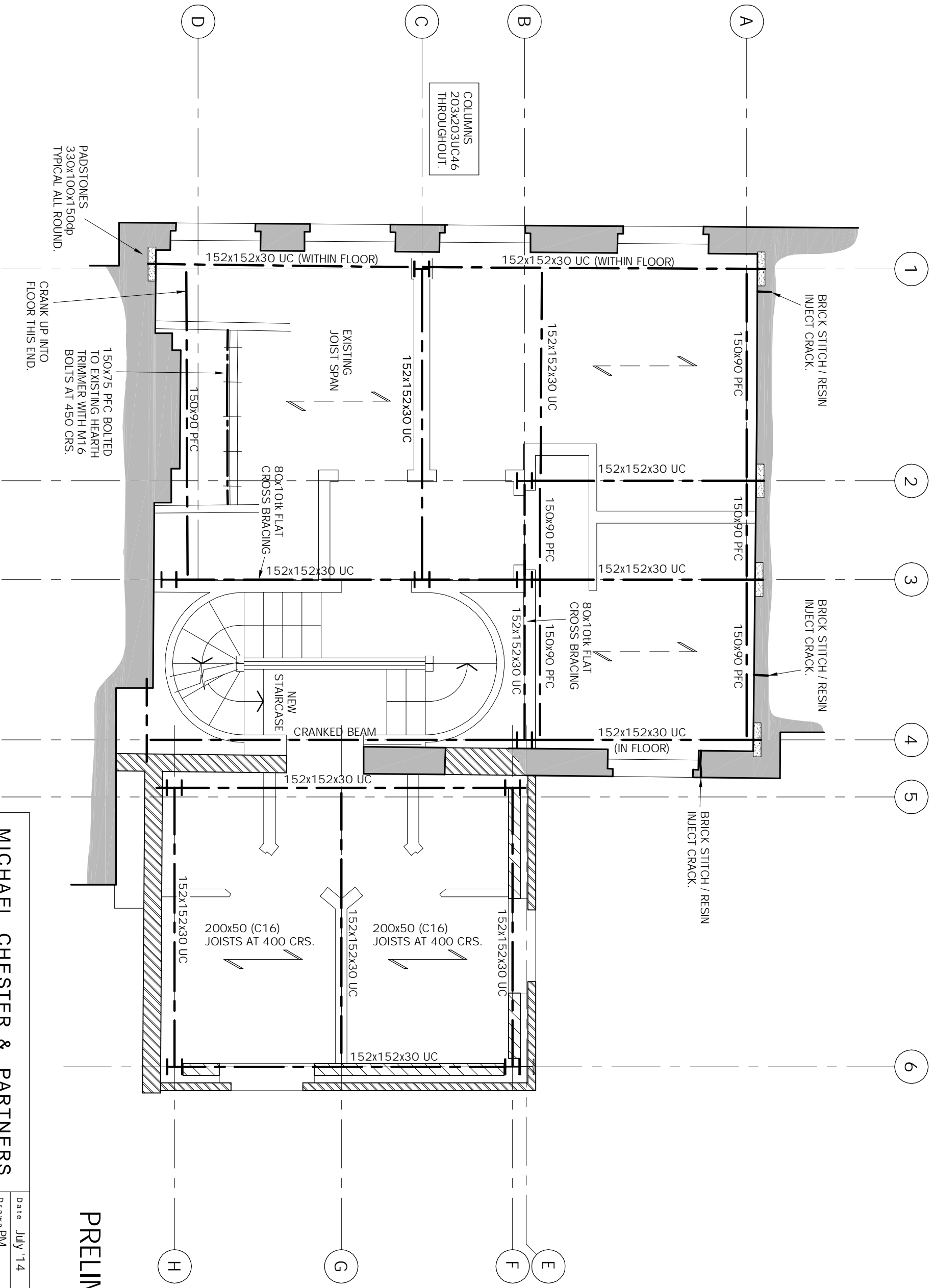
PRELIMINARY

MICHAEL CHESTER & PARTNERS Consulting Civil and Structural Engineers		Date	March '14	Drawn	PM	Design	13052/102	Re
8 Hale Lane London NW7 3NX Tel 020 8959 9119 Fax 020 8959 9662 GRD FLR SCHEME (NO ADDITIONAL BMNT).		Scale	1:50@A2	Project	65 SWINTON STREET LONDON WC1			



PRELIMINARY

MICHAEL CHESTER & PARTNERS		Date	July '14	Drawn	PM	Design	13052 / 103	Rev	
Consulting Civil and Structural Engineers		Scale	1:50@A2	Project		65 SWINTON STREET LONDON WC1			
8 Hale Lane London NW7 3NX tel 020 8959 9119 fax 020 8959 9662		FIRST FLOOR SCHEME							



COLUMNS
203x203UC46
THROUGHOUT.

PADSTONES
330x100x150dp
TYPICAL ALL ROUND.

150x75 PFC BOLTED
TO EXISTING HEARTH
TRIMMER WITH M16
BOLTS AT 450 CRS.
CRANK UP INTO
FLOOR THIS END.

80x10k FLAT
CROSS BRACING

NEW
STAIRCASE

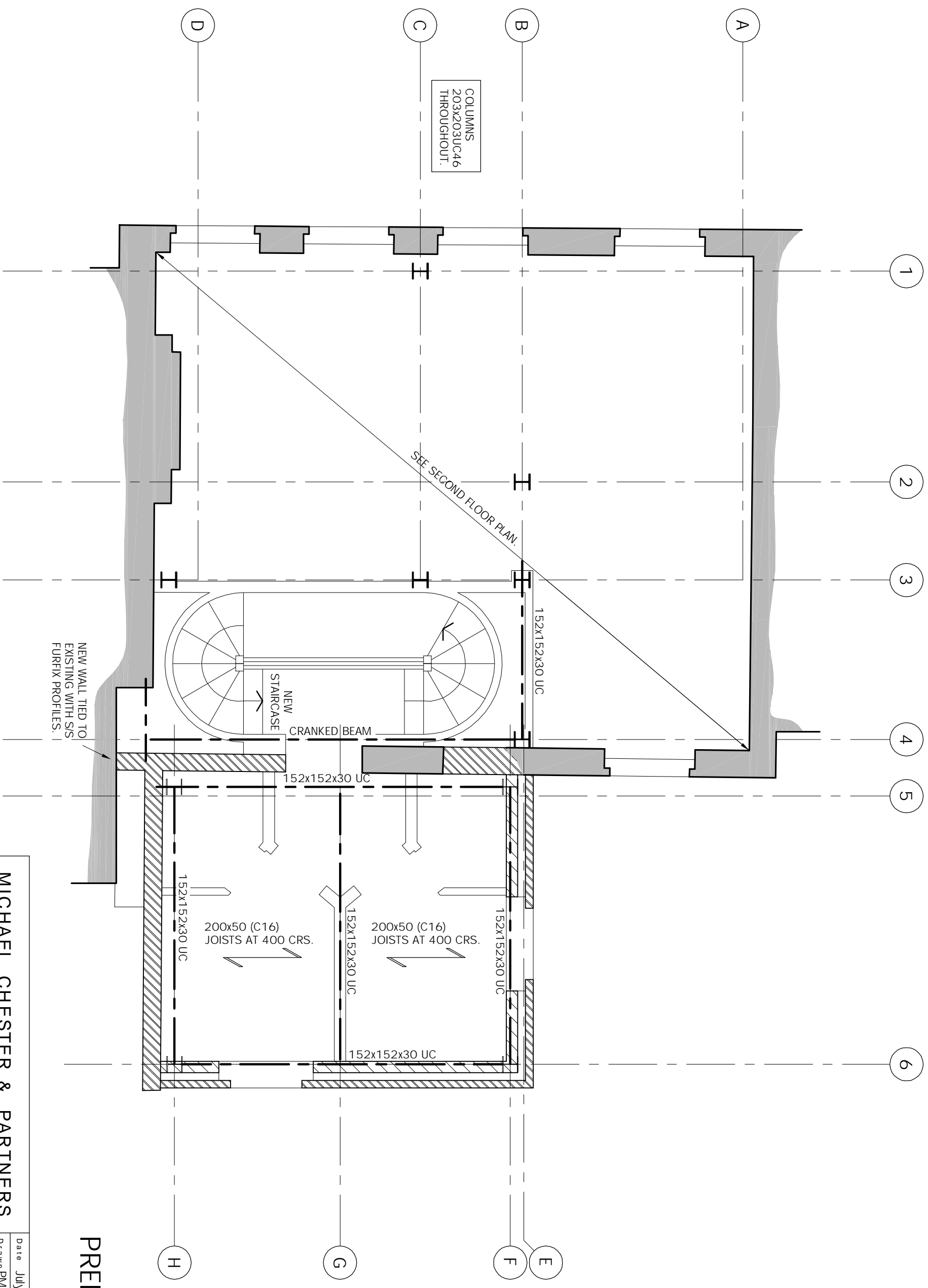
CRANKED BEAM

200x50 (C16)
JOISTS AT 400 CRS.

200x50 (C16)
JOISTS AT 400 CRS.

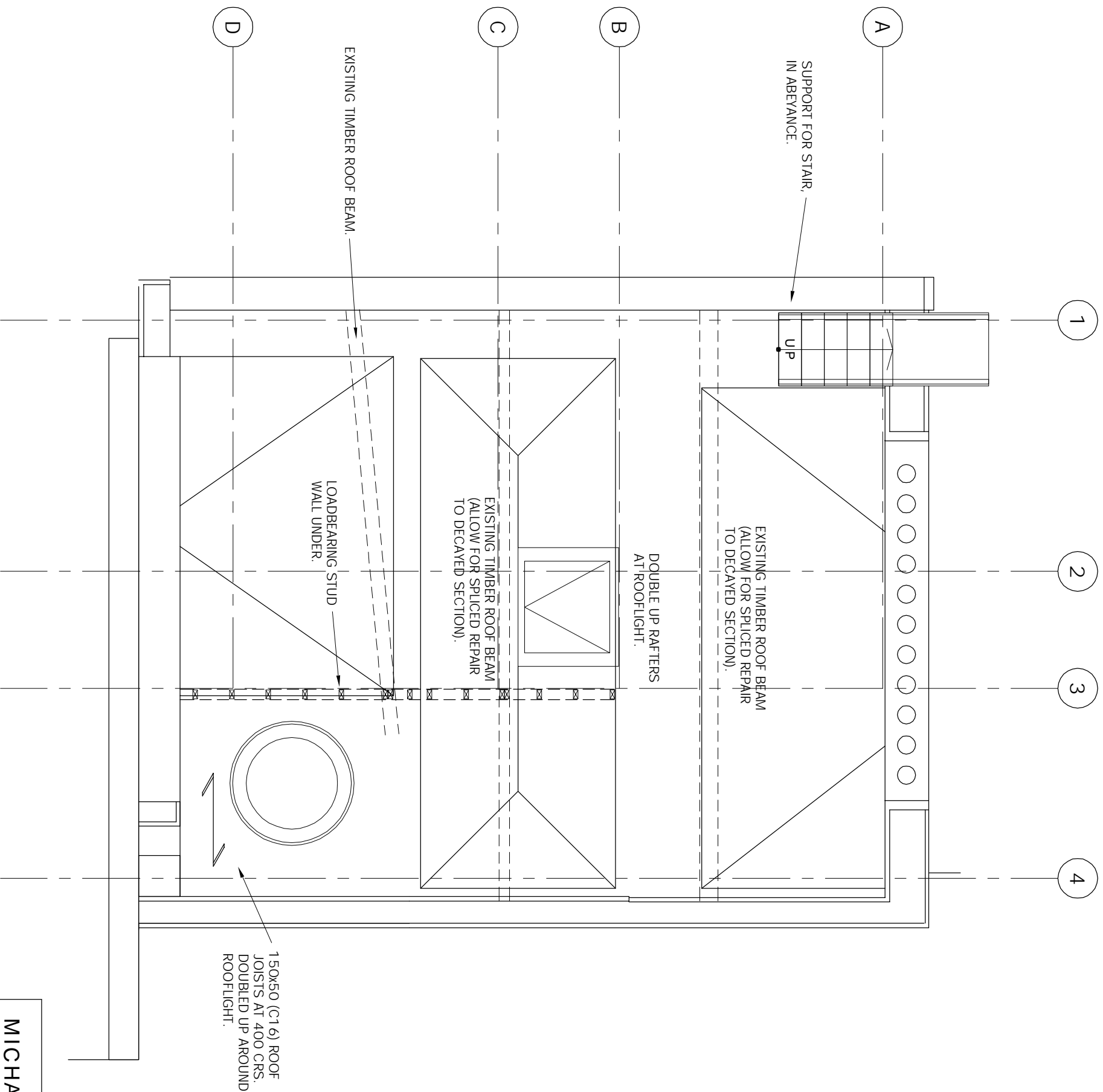
PRELIMINARY

MICHAEL CHESTER & PARTNERS		Date July '14	
Consulting Civil and Structural Engineers		Drawn PM	
8 Hale Lane London NW7 3NX tel 020 8959 9119 fax 020 8959 9662		Scale 1:50@A3	
Project		13052 / 104	
65 SWINTON STREET		Rev	
LONDON WC1			



PRELIMINARY

MICHAEL CHESTER & PARTNERS Consulting Civil and Structural Engineers		Date July '14 Drawn PM Scale 1:50@A3		Dwg No 1 3052 / 105		Rev	
8 Hale Lane London NW7 3NX tel 020 8959 9119 fax 020 8959 9662		Project 65 SWINTON STREET LONDON WC1					
MEZZANINE FLOOR SCHEME							



PRELIMINARY

MICHAEL CHESTER & PARTNERS Consulting Civil and Structural Engineers			Date	July '14	Drng No	1 3052 / 107	Rev	
			Drawn	PM	Scale		1:50@A3	
8 Hale Lane London NW7 3NX tel 020 8959 9119 fax 020 8959 9662			Project 65 SWINTON STREET LONDON WC1					
ROOF PLAN								