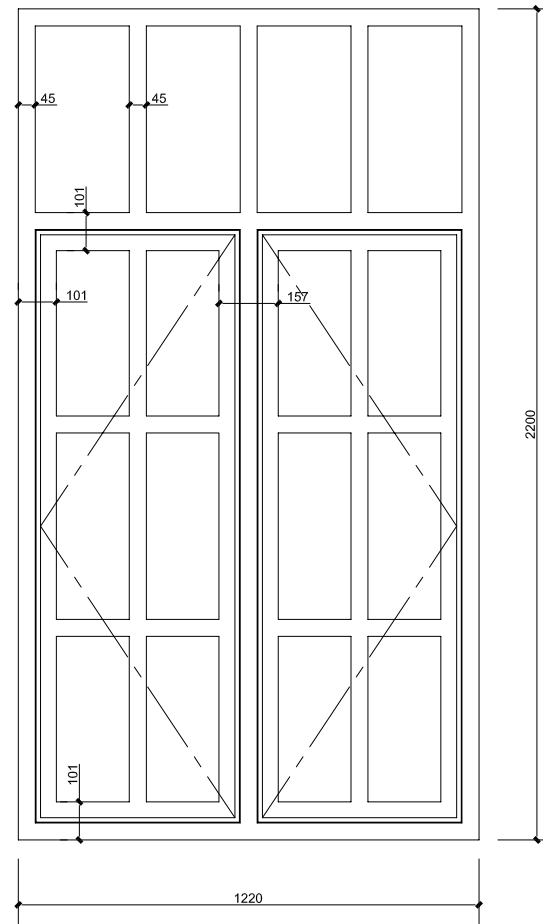


Existing



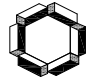
Proposed

THE DIMENSIONS AND DETAILS CONTAINED ON THIS DRAWING ARE INDICATIVE ONLY AND ARE NOT TO BE READ AS MANUFACTURING DETAILS OR DIMENSIONS.

FIGURED DIMENSIONS PREFERRED TO THOSE SCALED.

WEST LEIGH

HEAD OFFICE:
WEST LEIGH LIMITED
11-13 Spa Road, London, SE16 3RB
Telephone: 020-7232-0030
Facsimile: 020-7232-1763
Web: www.west-leigh.co.uk
email: info@west-leigh.co.uk



constructionline



Registered Company



Steel Window Association

SPECIFICATION

CONSTRUCTION	W20/w40 Steel Sections
MATERIAL	Mild steel.
FIXING BY	West Leigh Limited.
GLASS BY	West Leigh Limited.
GLAZING BY	West Leigh Limited.
FIXING HOLES	Standard CSK.
GLAZING BEADS	Aluminium clip on beads internally.
GLAZE	16mm/26mm Double Glazed Units
EXT. MASTIC BY	West Leigh Limited. Colour to be confirmed
INT. MASTIC BY	Others. Arbosil 1096 Silicone recommended.
FINISH	Hot Dipped Galvanised and Polyester Powder Coated: Ral Colour to be confirmed.

FITTINGS

GLAZING NOTES

Please note that permissible bead tolerances of up to 2mm may occur as part of the standard manufacturing tolerances.

AMENDMENTS

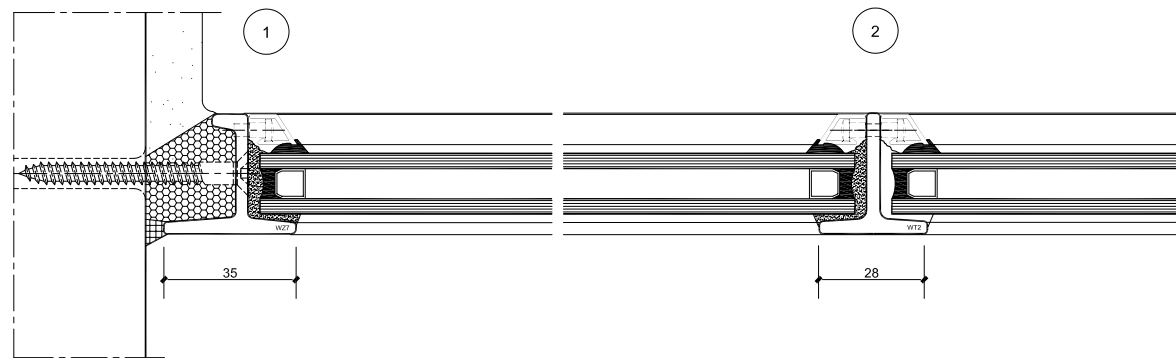
CONTRACTS NO.

WORKS NO.

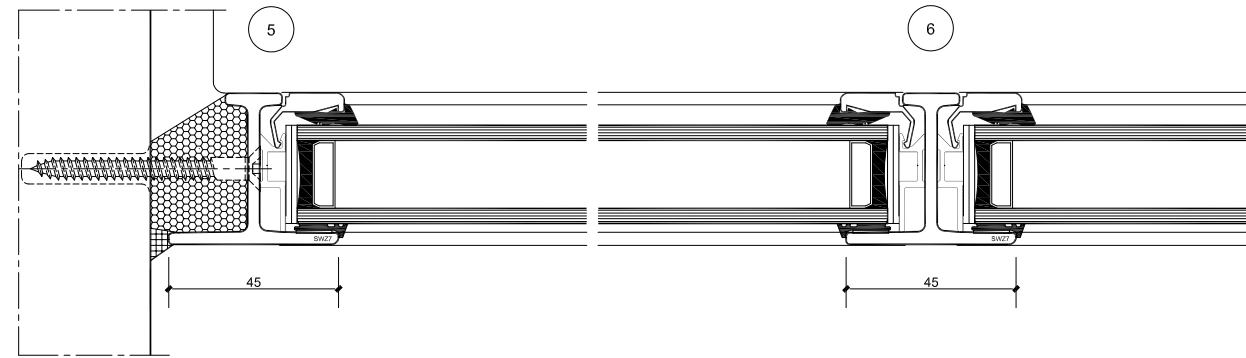
SITE
LINTON HOUSE
39/51 HIGHGATE ROAD
LONDON
NW5

TITLE OF DRAWING
ELEVATIONS AND TYPICAL SECTIONAL DETAILS OF PROPOSED NEW STEEL WINDOWS.

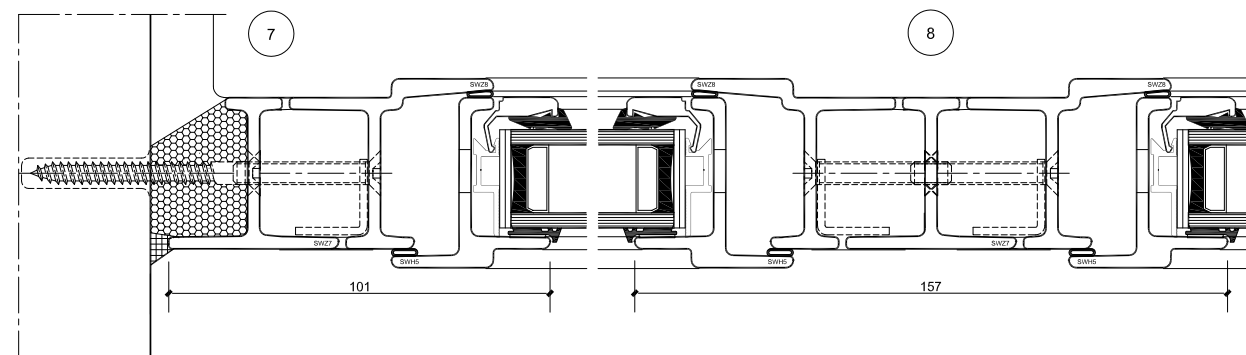
SCALE	DRAWN	21.07.14	TOM
1:10 & FULL SIZE	CHECKED	-	-
DRAWING NO.	REVISION	STATUS	
CE.9200/sk1	-	FOR APPROVAL	



Existing fixed light detail



Proposed fixed light detail



Proposed opening light detail

All details are subject to change dependent on site conditions.