

file ...

gleeds   
AECOM

file ...

gleeds<sup>G</sup>  
AECOM



gleeds<sup>G</sup>  
AECOM

file

file ...

file ...

gleeds<sup>G</sup>  
AECOM

file ...

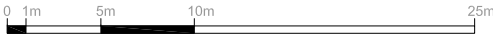
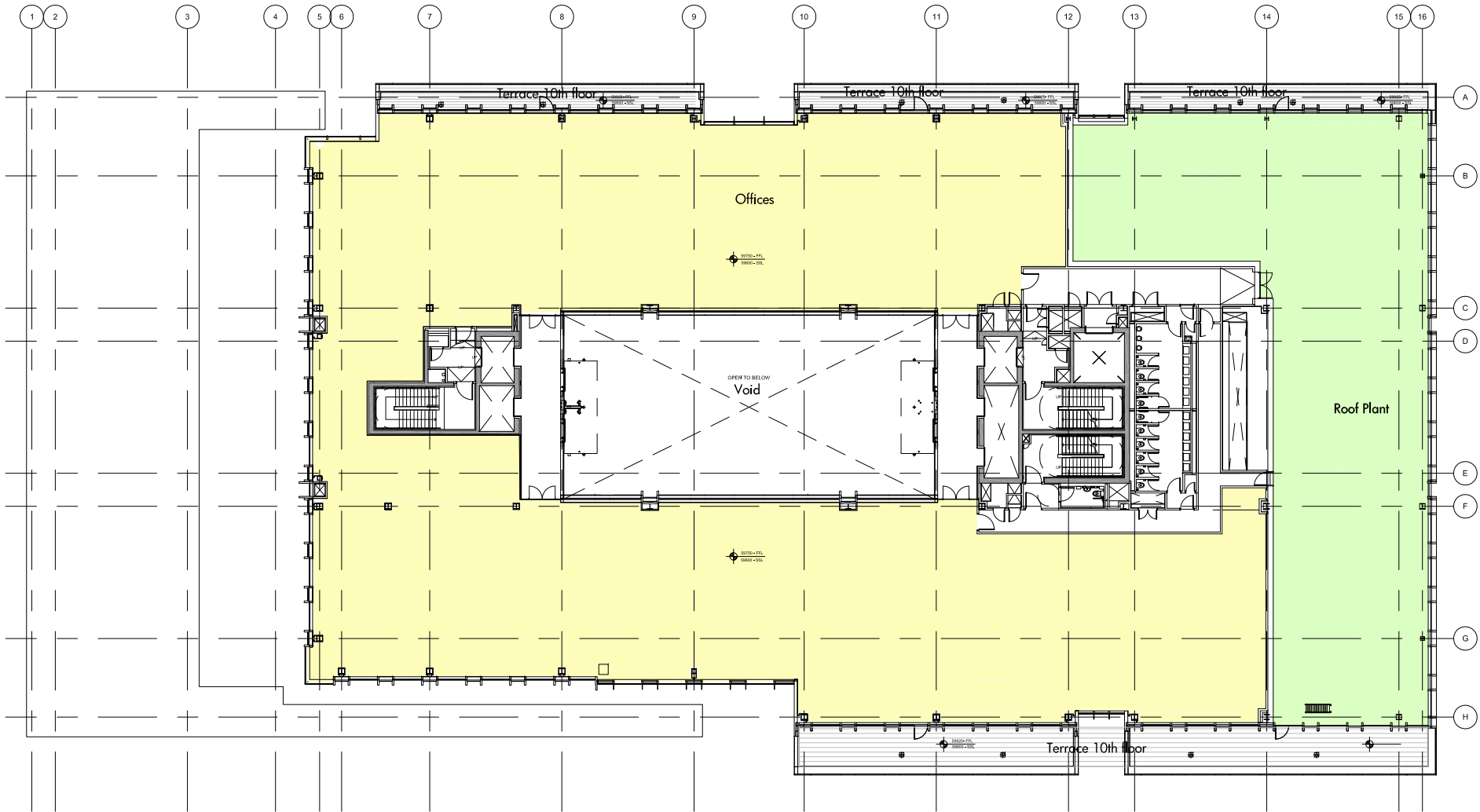
gleeds<sup>G</sup>  
AECOM

file ...

gleeds<sup>G</sup>  
AECOM



file



notes		
- The contractor is responsible for checking dimensions, tolerances and references. Any discrepancy to be verified with the Architect before proceeding with the works.		
- Where an item is covered by drawings to different scales the larger scale drawing is to be worked to.		
- Do not scale drawing. Figured dimensions to be worked to in all cases.		
Date	Rev	Comment
03.04.14	A	Minor Amendments

CONSULTANTS Design Architect Wilmotte UK Ltd 133 Oxford Gardens London, UK W10 6NE
Executive Architect ADAMSON ASSOCIATES (INTERNATIONAL) LIMITED 6th Floor, One Canada Square Canary Wharf London, UK E14 5AB
AKT II Structural Engineer 100 St John Street London UK, EC1M 4EH
HOARE LEA Glenn Hoare 200-016 Tottenham Court Road London, W1T 7PL
Quantity Surveyor Gleeds 95 New Cavendish Street London, W1W 6XF
Fire Consultant Aecom 63-77 Victoria Street St Albans, Herts AL1 3ER

Issued by:
<b>WILMOTTE UK Ltd</b>

Purpose of Issue
For Approval

Client

Project
King's Cross Central Plot B1

Drawing
<b>10th Floor Plan</b>

Drawing no		Rev
Wuk_1440_PL_511050		A
Date	...	Date
Drawn	BS	Checked BS
Scale		1:400 @ A3
Date		03.04.14

	<b>WILMOTTE UK Ltd</b>	
Lichfield Studio 133, Oxford Gardens London W10 6NE UK	T +44 (0) 2089697171 F +44 (0) 2089643407 E wilmotte@wilmotte.co.uk	

--	--

--	--

file ...

file ...

gleeds<sup>®</sup>  
**AECOM**

file ...







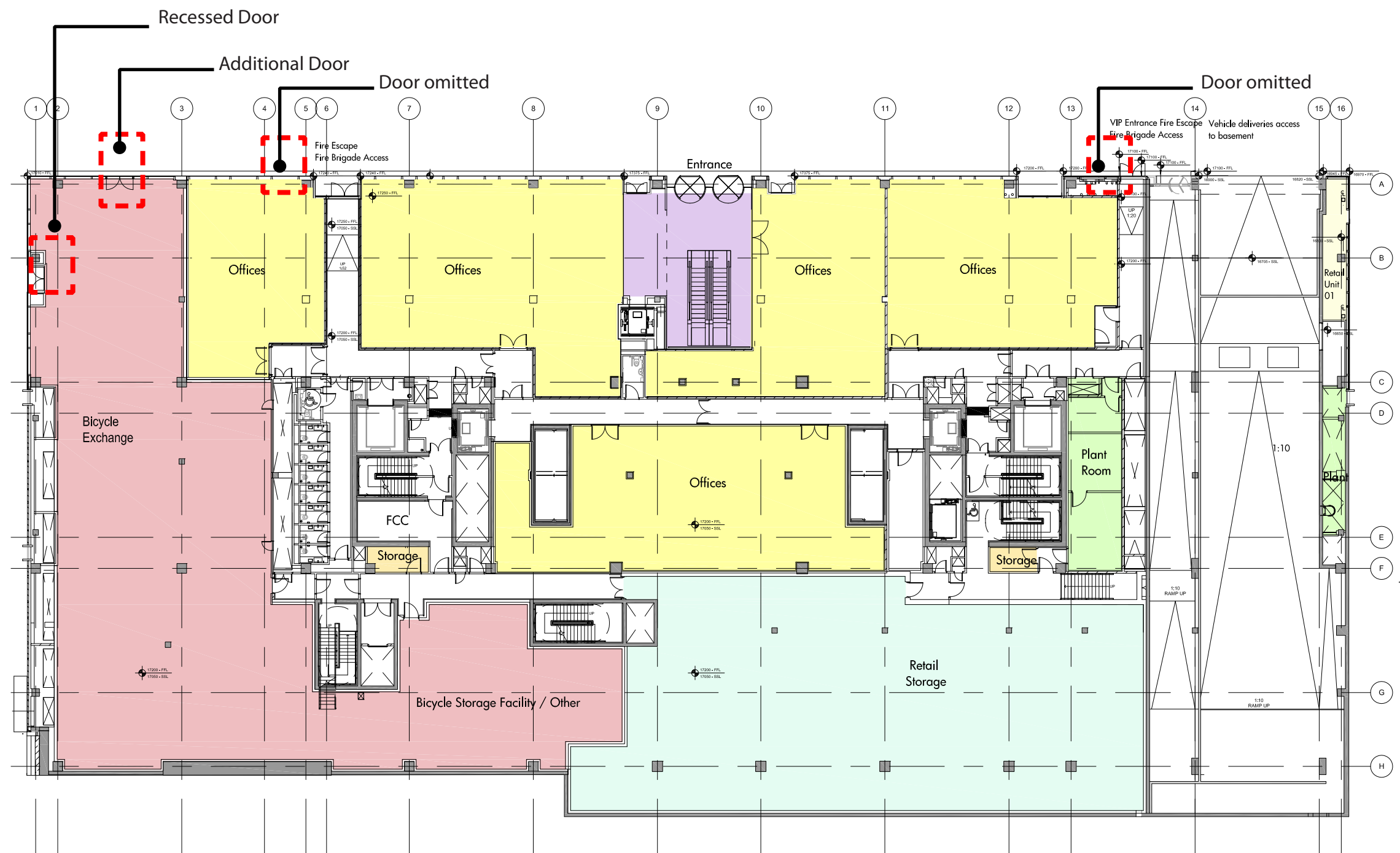
file ...







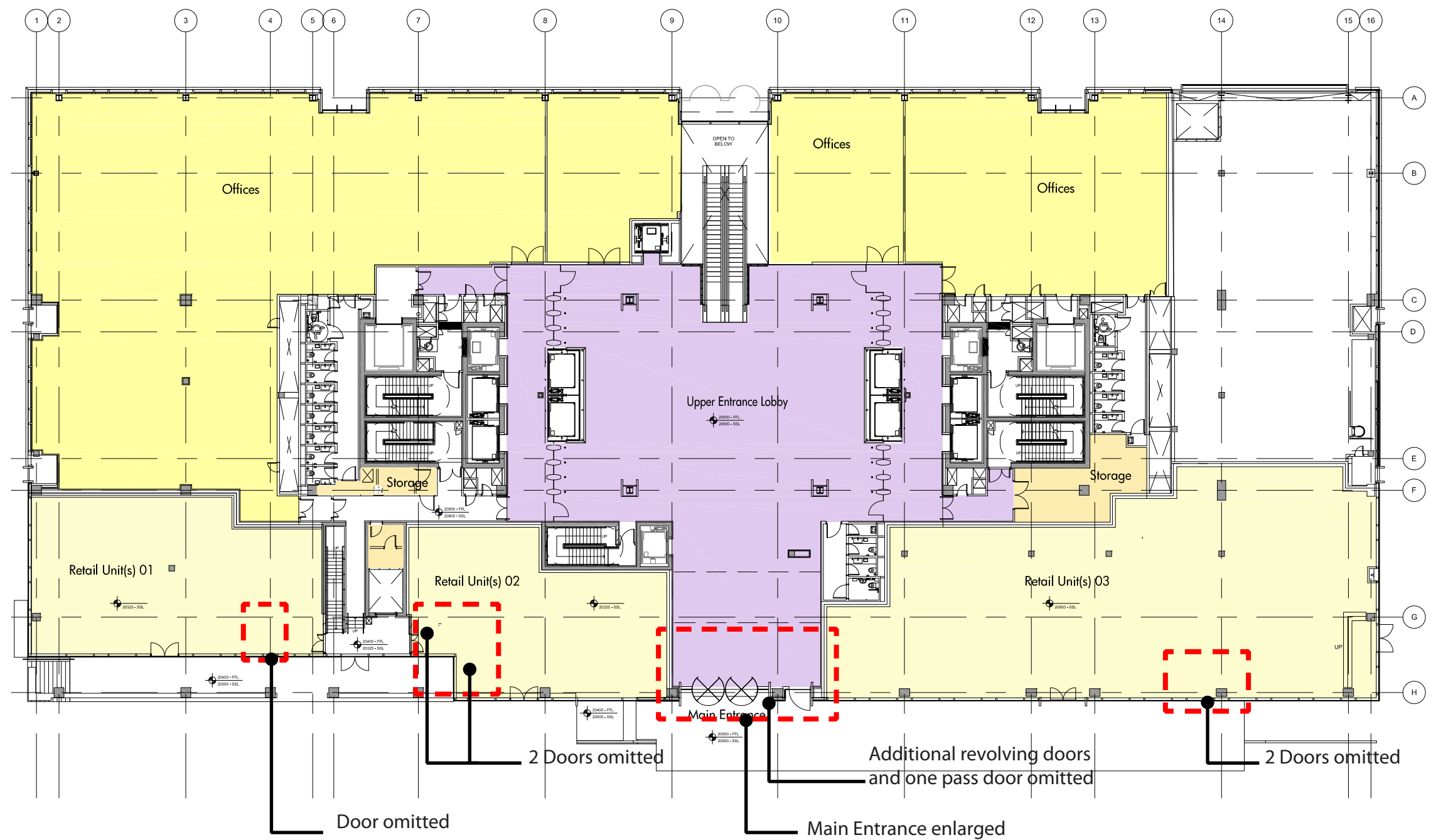




Lower Ground Floor Doors layout Amendments  
Wuk\_SK\_PL\_001

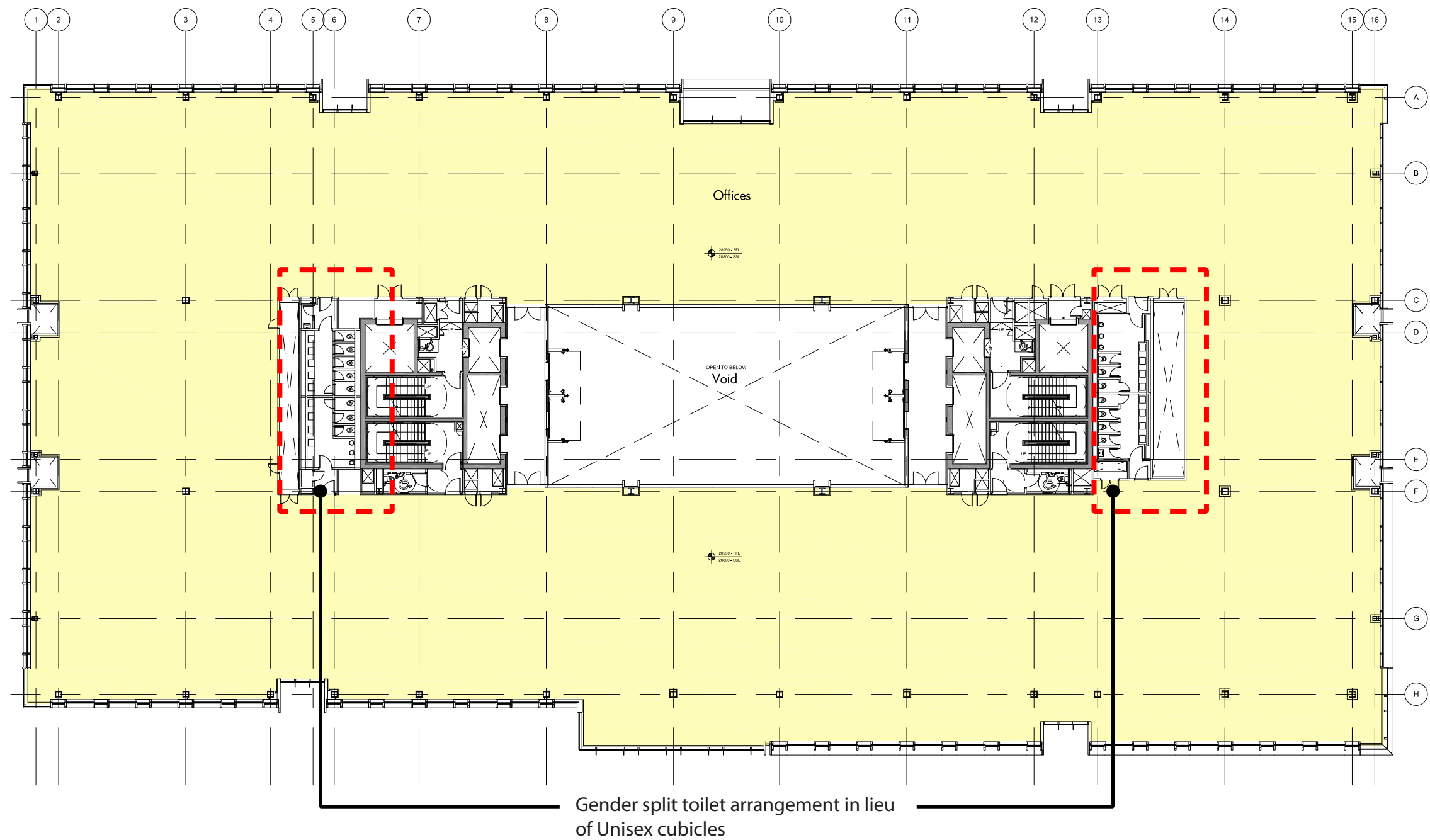






Upper Ground Floor Doors layout Amendments  
Wuk\_SK\_PL\_002





Core layouts Amendments  
Wuk\_SK\_PL\_003

