

notes

- The contractor is responsible for checking dimensions, tolerances and references. Any discrepancy to be verified with the Architect before proceeding with the works.
- Where an item is covered by drawings at different scales the larger scale drawing is to be worked to.
- Do not scale drawing. Figured dimensions to be worked to in all cases.



Date	Rev	Comment

- CONSULTANTS
- Design Architect
 Wilmotte UK Ltd
 133 Oxford Gardens
 London, UK W10 6NE
- Executive Architect
 ADAMSON ASSOCIATES (INTERNATIONAL) LIMITED
 6th Floor, One Canada Square
 Canary Wharf
 London, UK, E14 5AB
- AKT II
 Structural Engineer
 100 St John Street
 London
 UK, EC1M 4EH
- HOARE LEA
 Glen House
 200-208 Tottenham Court Road
 London, W1T 7PL
- Quantity Surveyor
 Gleeds
 85 New Cavendish Street
 London, W1W 6XP
- Fire Consultant
 Ascott
 63-77 Victoria Street
 St Albans, Herts AL1 3ER

Issued by:
WILMOTTE UK Ltd

Purpose of issue
 For Approval

Client
BNP PARIBAS REAL ESTATE

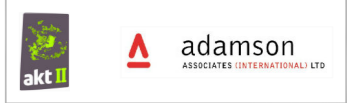
ARGENT

Project
 King's Cross Central
 Plot B1

Drawing
Second Floor Plan

Drawing no	Rev		
Wuk_1440_PL_510250	-		
Date	Drawn	Checked	Approved
...	BS	BS	PL
Scale	1:400 @A3	Date	15.09.11

WILMOTTE UK Ltd
 Lichfield Studio
 133, Oxford Gardens
 London W10 6NE, UK
 T +44 (0) 2089697171
 F +44 (0) 2089643407
 E wilmotte@wilmotte.co.uk



notes

- The contractor is responsible for checking dimensions, tolerances and references. Any discrepancy to be verified with the Architect before proceeding with the works.
- Where an item is covered by drawings to different scales the larger scale drawing is to be worked to.
- Do not scale drawing. Figured dimensions to be worked to in all cases.



Date	Rev	Comment

- CONSULTANTS**
- Design Architect**
Wilmotte UK Ltd
 133 Oxford Gardens
 London, UK W10 6NE
- Executive Architect**
ADAMSON ASSOCIATES (INTERNATIONAL) LIMITED
 8th Floor, One Canada Square
 Canary Wharf
 London, UK E14 5AB
- AKT II**
 Structural Engineer
 100 St. John Street
 London
 UK, EC1M 4BH
- HOARE LEA**
 Glenn House
 200-208 Tottenham Court Road
 London, W1T 7PL
- Quantity Surveyor**
Gleeds
 95 New Cavendish Street
 London, W1W 6XF
- File Consultant**
Aecon
 63-77 Victoria Street
 St Albans, Herts AL1 3EP

Issued by:
WILMOTTE UK Ltd

Purpose of issue
For Approval

Client
BNP PARIBAS REAL ESTATE

ARGENT

Project
King's Cross Central
 Plot B1

Drawing
Third Floor Plan

Drawing no
Wuk_1440_PL_510350

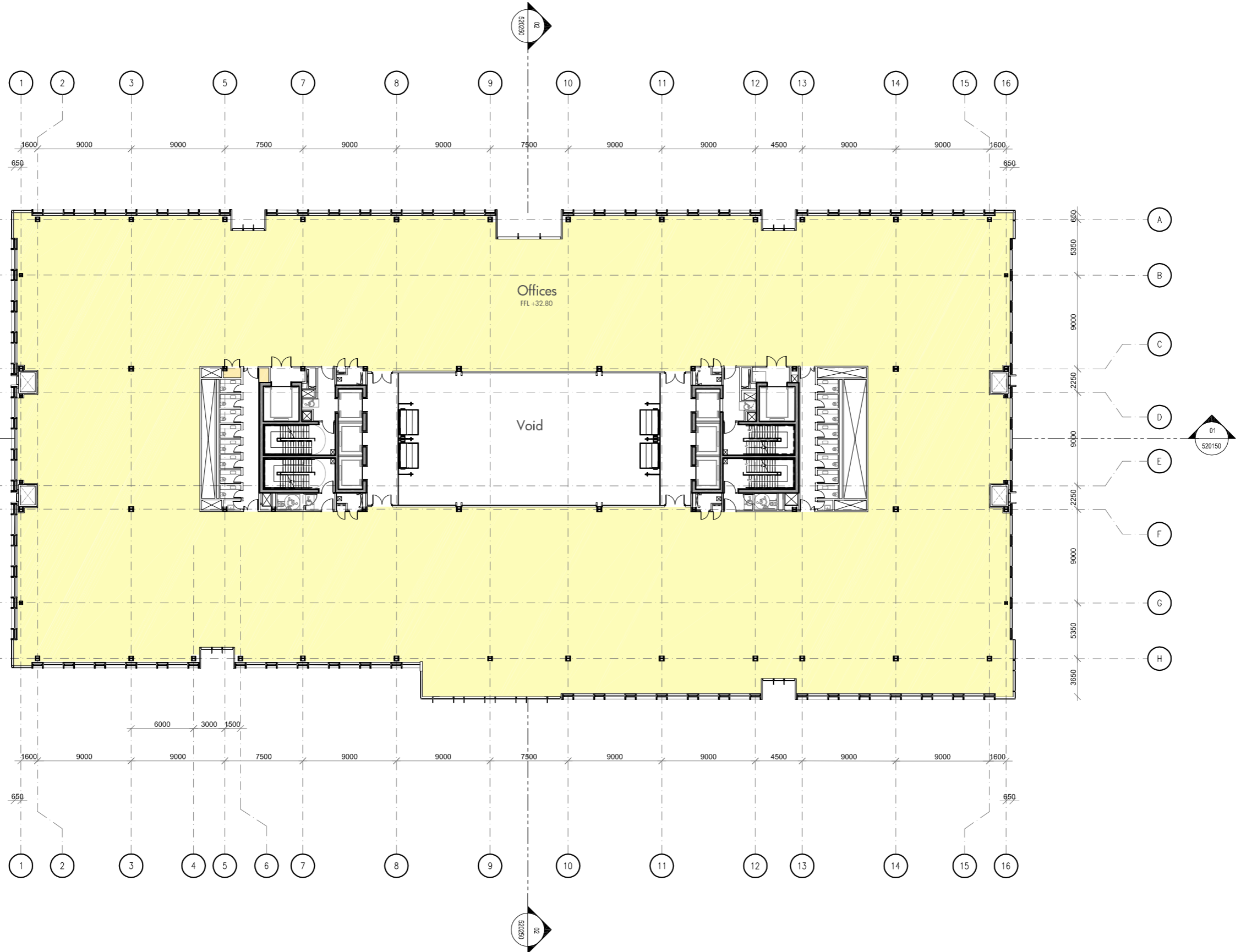
Date	Drawn	Checked	BS	Approved	PL

Scale: **1:400 @A3** Date: **15.09.11**

WILMOTTE UK Ltd
 Lichfield Studio
 133, Oxford Gardens
 London W10 6NE UK
 T +44 (0) 2089697171
 F +44 (0) 2089643407
 E wilmotte@wilmotte.co.uk

akt II
adamson ASSOCIATES (INTERNATIONAL) LTD

HOARE LEA
gleeds AECOM



notes

- The contractor is responsible for checking dimensions, tolerances and references. Any discrepancy to be verified with the Architect before proceeding with the works.
- Where an item is covered by drawings to different scales the larger scale drawing is to be worked to.
- Do not scale drawing. Figured dimensions to be worked to in all cases.



Date	Rev	Comment

- CONSULTANTS**
- Design Architect**
Wilmotte UK Ltd
133 Oxford Gardens
London, UK W10 0NE
- Executive Architect**
ADAMSON ASSOCIATES (INTERNATIONAL) LIMITED
6th Floor, One Canada Square
Canary Wharf
London, UK E14 5AB
- AKT II**
Structural Engineer
100 St. John Street
London
UK, EC1M 4EH
- HOARE LEA**
Glenn House
200-208 Tottenham Court Road
London, W1T 7PL
- Quantity Surveyor**
Glenns
95 New Cavendish Street
London, W1W 6XF
- Fire Consultant**
Aecon
65-77 Victoria Street
St Albans, Herts AL1 3ER

Issued by:
WILMOTTE UK Ltd

Purpose of issue
For Approval

Client
BNP PARIBAS REAL ESTATE

ARGENT

Project
King's Cross Central Plot B1

Drawing
4th Floor Plan

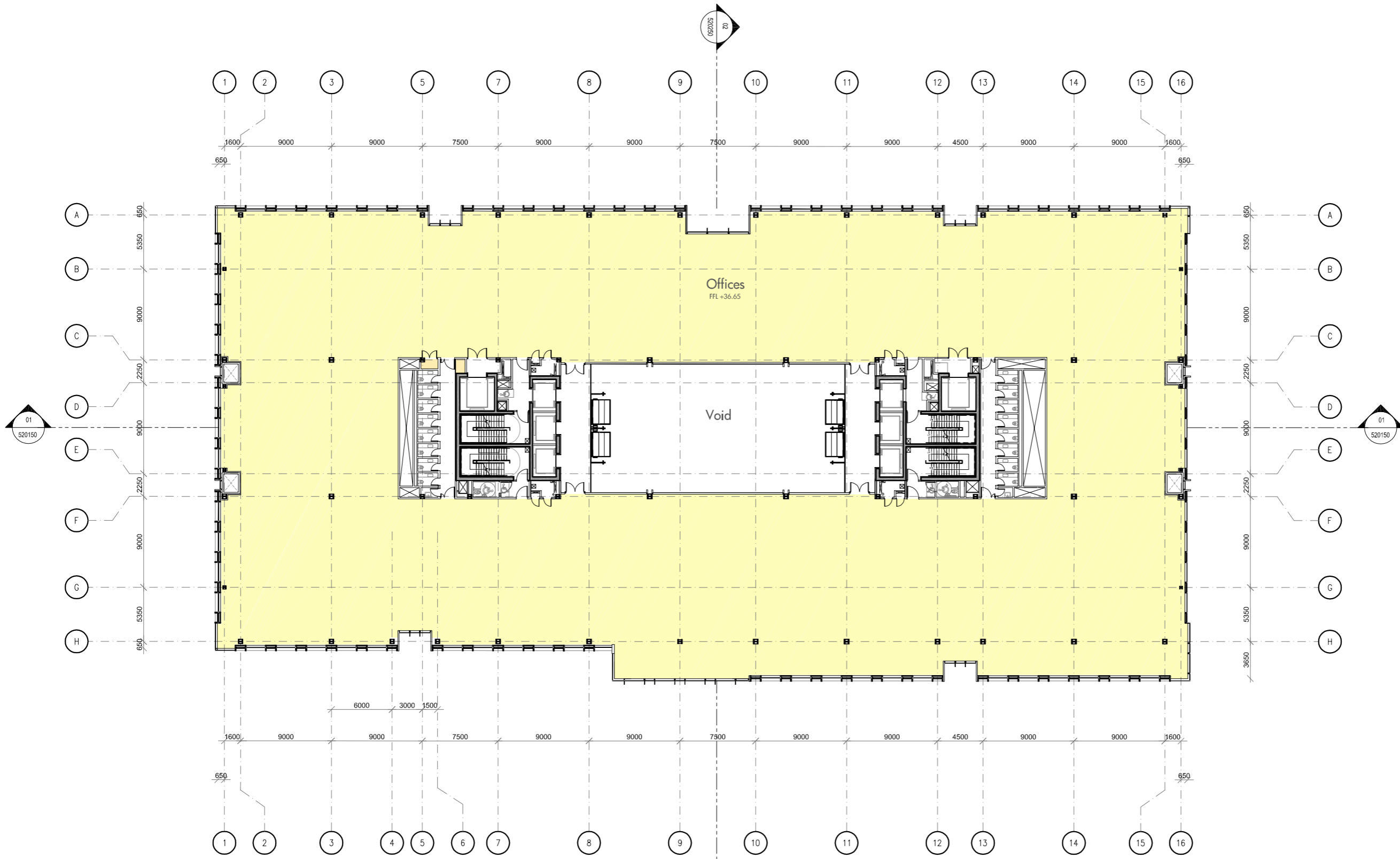
Drawing no		Rev
Wuk_1440_PL_510450		-
Date	Drawn	Checked
15.09.11	BS	BS
Approved	PL	
Scale	Date	
1:400 @A3	15.09.11	

WILMOTTE UK Ltd
Lichfield Studio
133, Oxford Gardens
London W10 0NE UK
T +44 (0) 2089697171
F +44 (0) 2089643407
E wilmotte@wilmotte.co.uk

akt II **adamson ASSOCIATES (INTERNATIONAL) LTD**

HOARE LEA **gleeds AECOM**

file ...



notes

- The contractor is responsible for checking dimensions, tolerances and references. Any discrepancy to be verified with the Architect before proceeding with the works.
- Where an item is covered by drawings to different scales the larger scale drawing is to be worked to.
- Do not scale drawing. Figured dimensions to be worked to in all cases.



Date	Rev	Comment

CONSULTANTS
 Design Architect
 Wilmotte UK Ltd
 133 Oxford Gardens
 London, UK W10 6NE

Executive Architect
 ADAMSON ASSOCIATES (INTERNATIONAL) LIMITED
 6th Floor, One Canaris Square
 Canary Wharf
 London, UK E14 5AB

AKT II
 Structural Engineer
 100 St John Street
 London
 UK, EC1M 4EH

HOARE LEA
 Glen House
 200-208 Tottenham Court Road
 London, W1T 7PL

Quantity Surveyor
 Gleeds
 95 New Cavendish Street
 London, W1W 6XF

Fire Consultant
 Arcan
 63-77 Victoria Street
 St Albans, Herts AL1 3ER

Issued by:
WILMOTTE UK Ltd

Purpose of issue
For Approval

Client
BNP PARIBAS REAL ESTATE

ARGENT

Project
King's Cross Central
 Plot B1

Drawing
5th Floor Plan

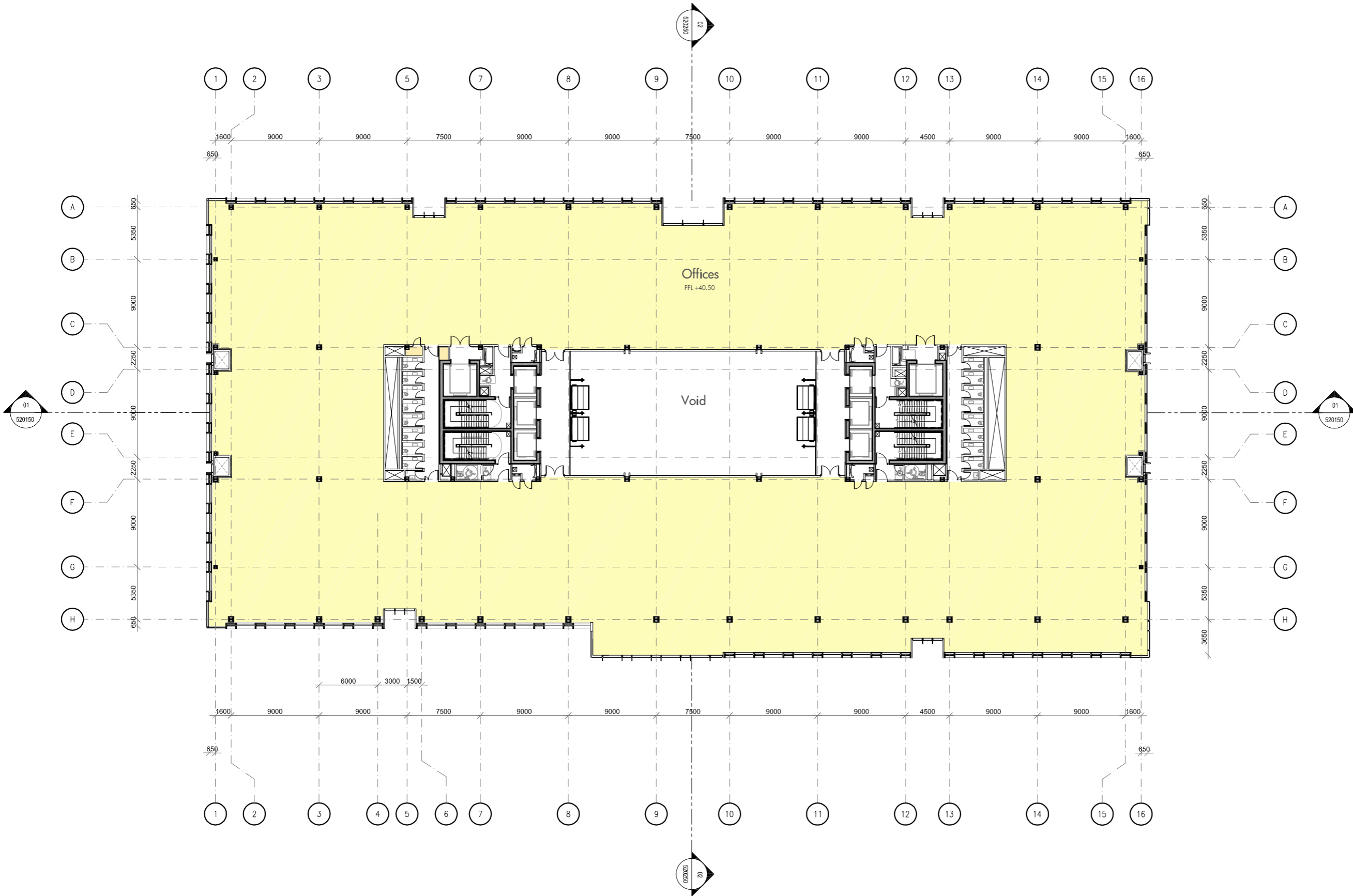
Drawing no	Rev
Wuk_1440_PL_510550	-

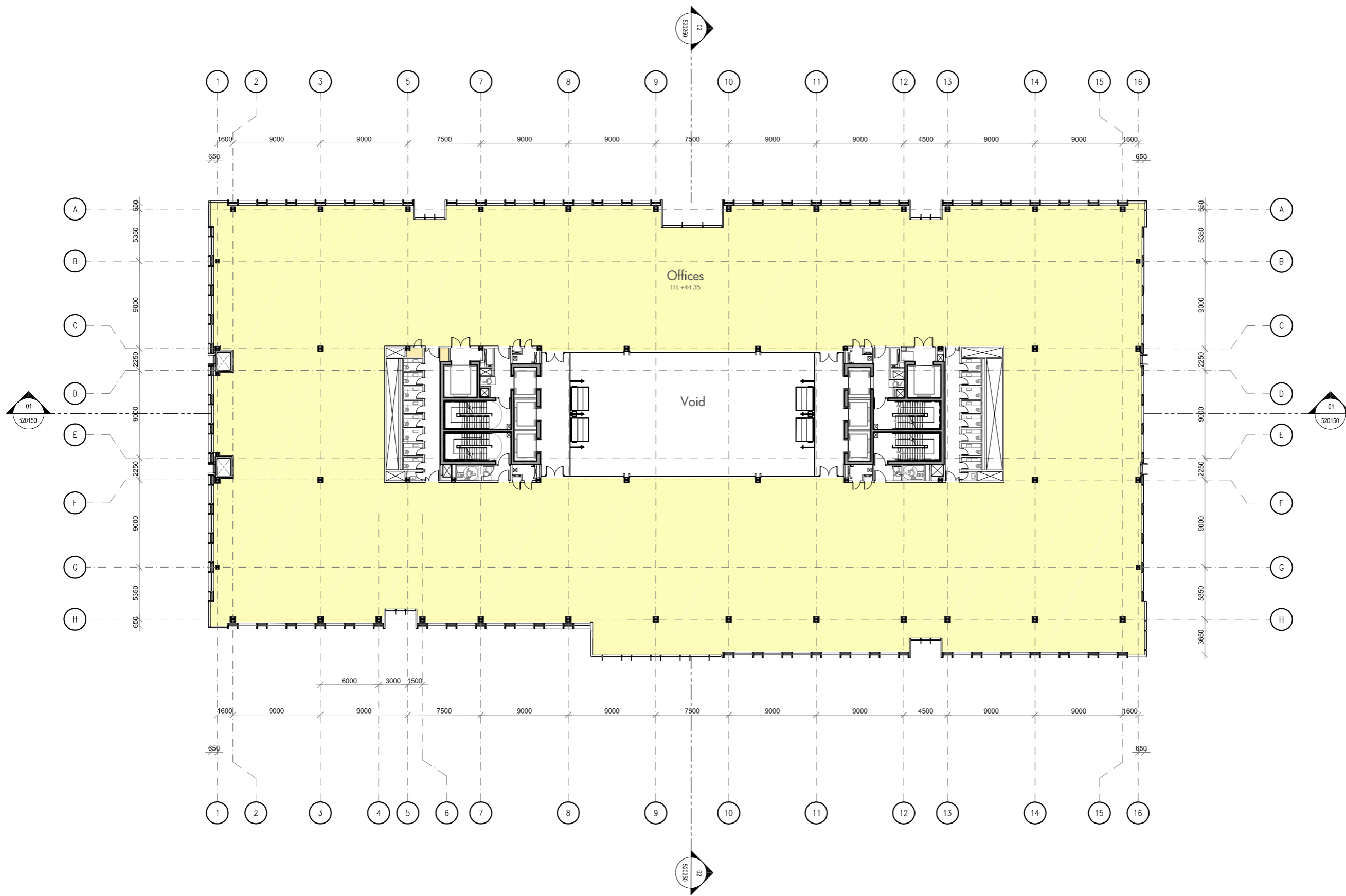
Date	Drawn	Checked	Approved
---	BS	BS	PL
Scale	1:400 @A3	Date	15.09.11

WILMOTTE UK Ltd
 Lichfield Studio
 133, Oxford Gardens
 London W10 6NE, UK
 T +44 (0) 2088697171
 F +44 (0) 2088643407
 E wilmotte@wilmotte.co.uk

adamson ASSOCIATES (INTERNATIONAL) LTD

gleeds^G AECOM





notes

- The contractor is responsible for checking dimensions, tolerances and references. Any discrepancy to be verified with the Architect before proceeding with the works.
- Where an item is covered by drawings to different scales the larger scale drawing is to be worked to.
- Do not scale drawing. Figured dimensions to be worked to in all cases.



Date	Rev	Comment

CONSULTANTS
 Design Architect
 Wilmotte UK Ltd
 133 Oxford Gardens
 London, UK W10 6NE

Executive Architect
 ADAMSON ASSOCIATES (INTERNATIONAL) LIMITED
 6th Floor, One Canada Square
 Canary Wharf
 London, UK E14 5AB

AKT II
 Structural Engineer
 100 St John Street
 London
 UK, EC1M 4EH

HOARE LEA
 Glenn House
 200-208 Tottenham Court Road
 London, W1T 7PL

Quantity Surveyor
 Glencoe
 65 New Cavendish Street
 London, W1W 6XP

Fire Consultant
 Alcom
 63-77 Victoria Street
 St Albans, Herts AL1 3EP

Issued by:
WILMOTTE UK Ltd

Purpose of Issue
For Approval

Client
BNP PARIBAS REAL ESTATE

ARGENT

Project
King's Cross Central
 Plot B1

Drawing
6th Floor Plan

Drawing no
Wuk_1440_PL_510650

Date	Drawn	Checked	BS	Approved	PL

Scale **1:400 @A3** Date **15.09.11**

WILMOTTE UK Ltd
 Lichfield Studio
 133, Oxford Gardens
 London W10 6NE UK
 T +44 (0) 2089697171
 F +44 (0) 2089643407
 E wilmotte@wilmotte.co.uk

akt II
adamson ASSOCIATES (INTERNATIONAL) LTD
gleeds
AECOM

file ..

notes

- The contractor is responsible for checking dimensions, tolerances and references. Any discrepancy to be verified with the Architect before proceeding with the works.
- Where an item is covered by drawings to different scales the larger scale drawing is to be worked to.
- Do not scale drawing. Figured dimensions to be worked to in all cases.



Date	Rev	Comment

CONSULTANTS
 Design Architect
 Wilmotte UK Ltd
 133 Oxford Gardens
 London, UK W10 6NE

Executive Architect
 ADAMSON ASSOCIATES (INTERNATIONAL) LIMITED
 6th Floor, One Canada Square
 Canary Wharf
 London, UK E14 5AB

AKT II
 Structural Engineer
 100 St John Street
 London
 UK, EC1M 4EH

HOARE LEA
 Glen House
 200-208 Tottenham Court Road
 London, W1T 7PL

Quantity Surveyor
 Gleeds
 95 New Cavendish Street
 London, W1W 6XF

Fire Consultant
 Ascorm
 63-77 Victoria Street
 St Albans, Herts AL1 3ER

Issued by:
WILMOTTE UK Ltd

Purpose of Issue
 For Approval

Client
BNP PARIBAS REAL ESTATE

ARGENT

Project
 King's Cross Central
 Plot B1

Drawing
7th Floor Plan

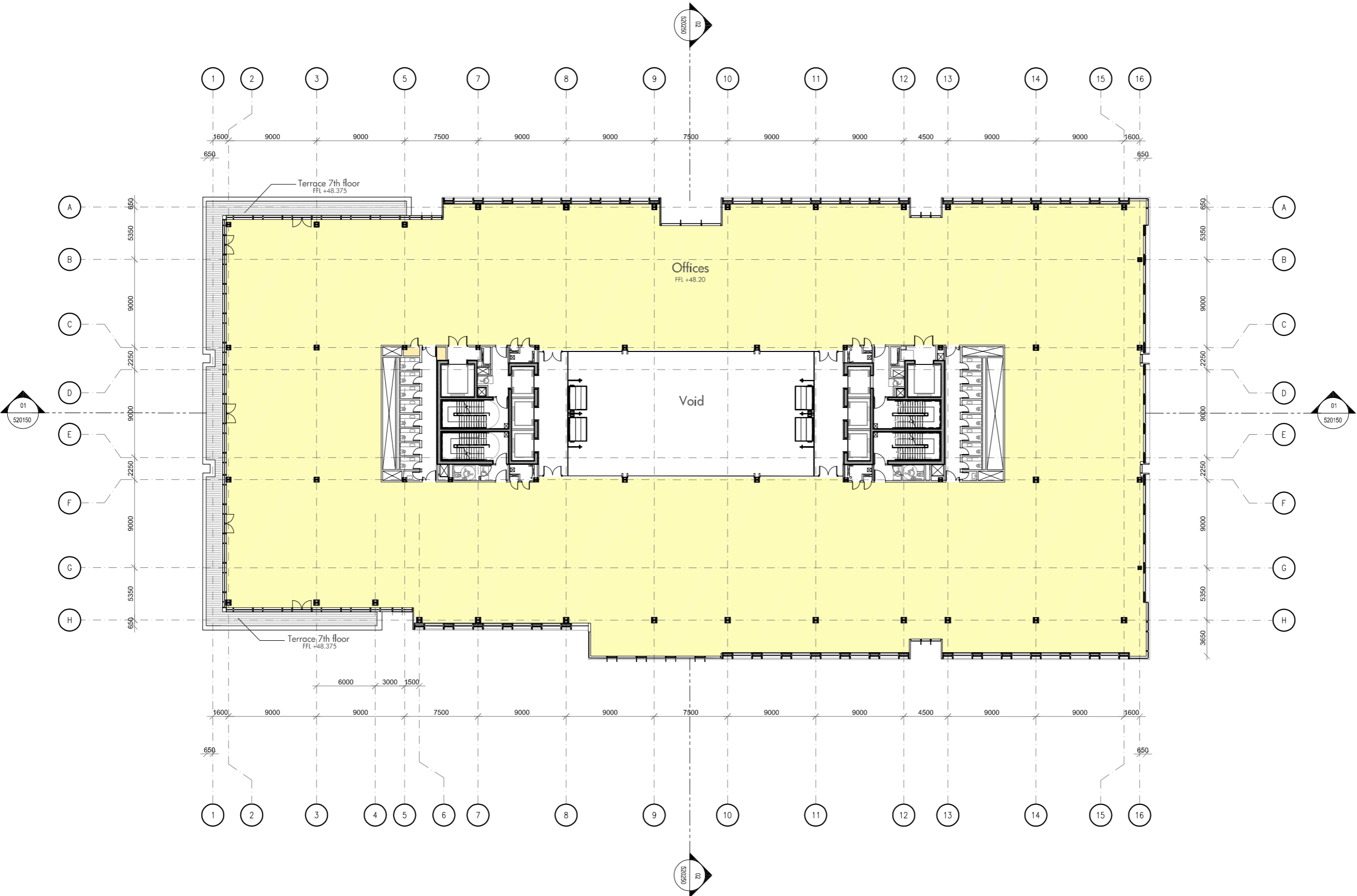
Drawing no
Wuk_1440_PL_510750

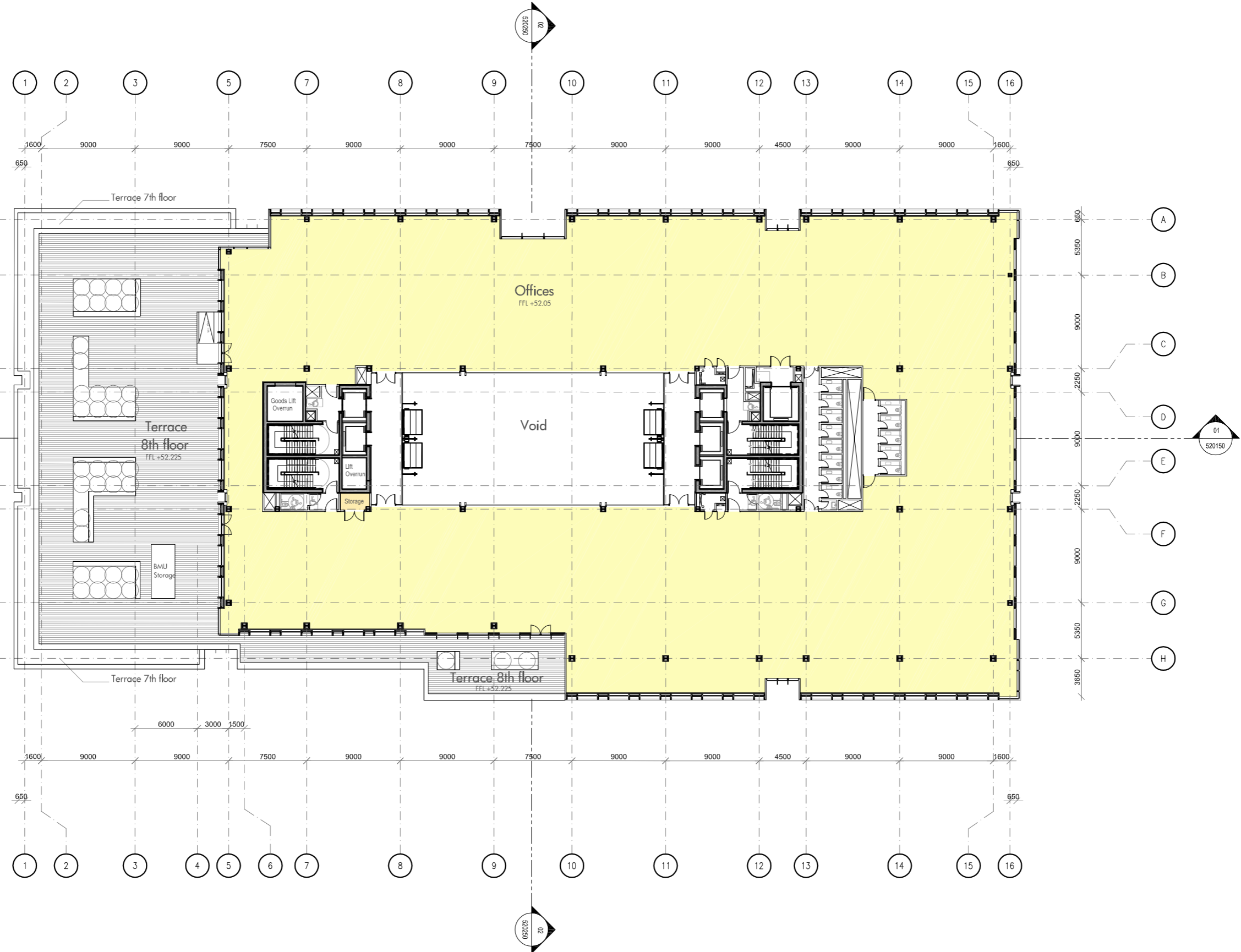
Date	Drawn	BS	Checked	BS	Approved	PL
Scale	1:400 @A3		Date	15.09.11		

WILMOTTE UK Ltd
 Lichfield Studio
 133, Oxford Gardens
 London W10 6NE UK
 T +44 (0) 2088697171
 F +44 (0) 2088643407
 E wilmotte@wilmotte.co.uk

akt II
adamson ASSOCIATES (INTERNATIONAL) LTD

HOARE LEA
gleeds AECOM





notes

- The contractor is responsible for checking dimensions, tolerances and references. Any discrepancy to be verified with the Architect before proceeding with the works.
- Where an item is covered by drawings to different scales the larger scale drawing is to be worked to.
- Do not scale drawing. Figured dimensions to be worked to in all cases.

Date	Rev	Comment

- CONSULTANTS
- Design Architect
Wilmotte UK Ltd
133 Oxford Gardens
London, UK W10 6NE
- Executive Architect
ADAMSON ASSOCIATES (INTERNATIONAL) LIMITED
6th Floor, One Canada Square
Canary Wharf
London, UK E14 5AB
- AKT II
Structural Engineer
100 St. John Street
London
UK, EC1M 4EH
- HOARE LEA
Glenn House
200-208 Tottenham Court Road
London, W1T 7PL
- Quantity Surveyor
Gleeds
95 New Cavendish Street
London, W1W 6XF
- Fire Consultant
Aecon
63-77 Victoria Street
St. Albans, Herts AL1 3EP

Issued by:
WILMOTTE UK Ltd

Purpose of Issue
For Approval

Client
BNP PARIBAS REAL ESTATE

ARGENT

Project
King's Cross Central
Plot B1

Drawing
8th Floor Plan

Drawing no	Rev		
Wuk_1440_PL_510850	-		
Date	Drawn	Checked	Approved
	BS	BS	PL
Scale	1:400 @A3		Date
			15.09.11

WILMOTTE UK Ltd
Lichfield Studio
133, Oxford Gardens
London W10 6NE UK
T +44 (0) 2089697171
F +44 (0) 2089643407
E wilmotte@wilmotte.co.uk

akt II **adamson ASSOCIATES (INTERNATIONAL) LTD**

HOARE LEA **gleeds AECOM**

notes

- The contractor is responsible for checking dimensions, tolerances and references. Any discrepancy to be verified with the Architect before proceeding with the works.
- Where an item is covered by drawings to different scales the larger scale drawing is to be worked to.
- Do not scale drawing. Figured dimensions to be worked to in all cases.



Date	Rev	Comment

CONSULTANTS
Design Architect
Wilmotte UK Ltd
133 Oxford Gardens
London, UK W10 6NE

Executive Architect
ADAMSON ASSOCIATES (INTERNATIONAL) LIMITED
6th Floor, One Canada Square
Canary Wharf
London, UK E14 5AB

AKT II
Structural Engineer
100 St John Street
London
UK, EC1M 4EH

HOARE LEA
Glenn House
200-208 Tottenham Court Road
London, W1T 7PL

Quantity Surveyor
Gleeds
85 New Cavendish Street
London, W1W 6QP

Fire Consultant
Aecon
63-77 Victoria Street
St Albans, Herts AL1 3EP

Issued by:
WILMOTTE UK Ltd

Purpose of Issue
For Approval

Client

Project
King's Cross Central
Plot B1

Drawing
9th Floor Plan

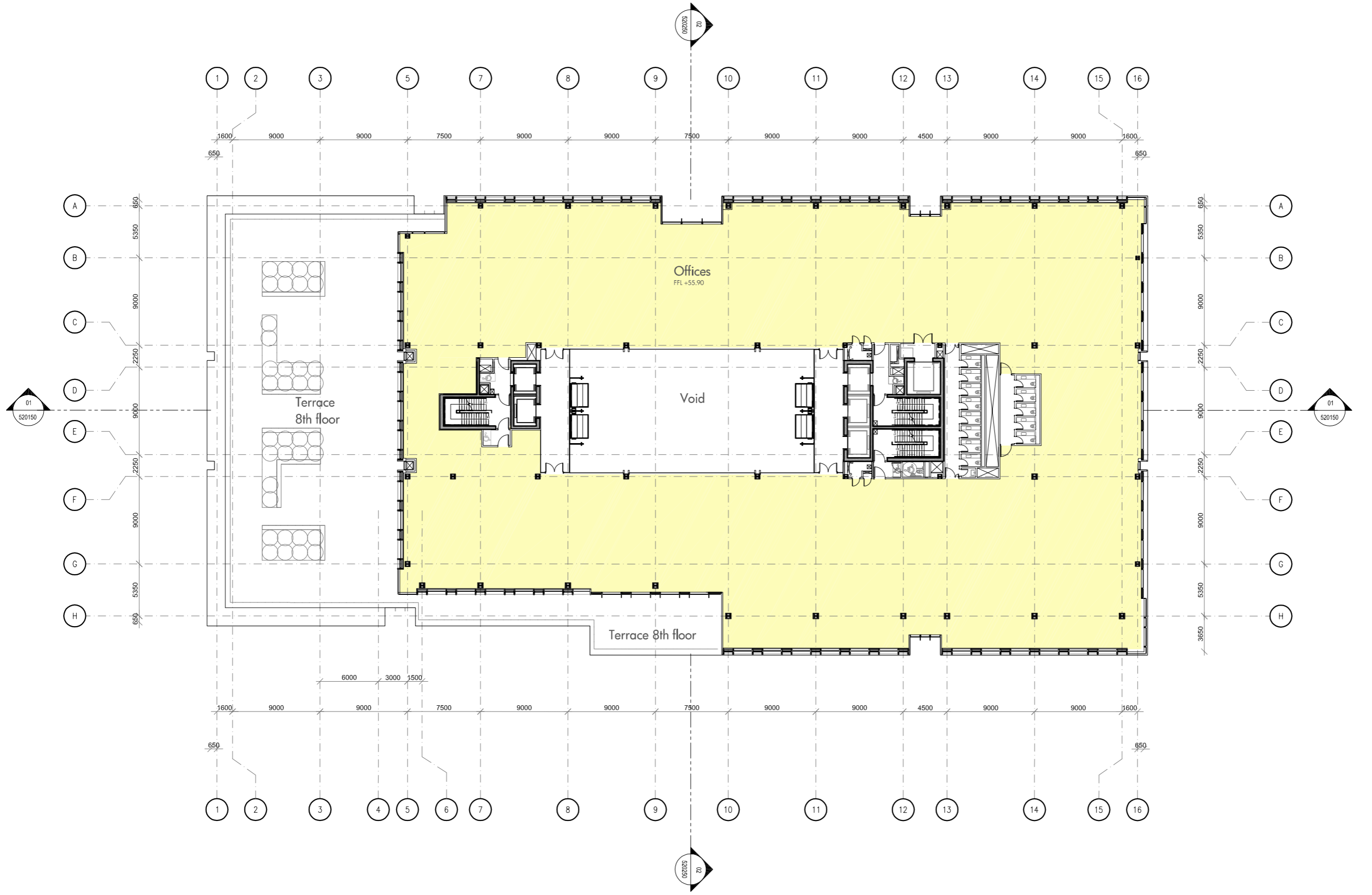
Drawing no
Wuk_1440_PL_510950

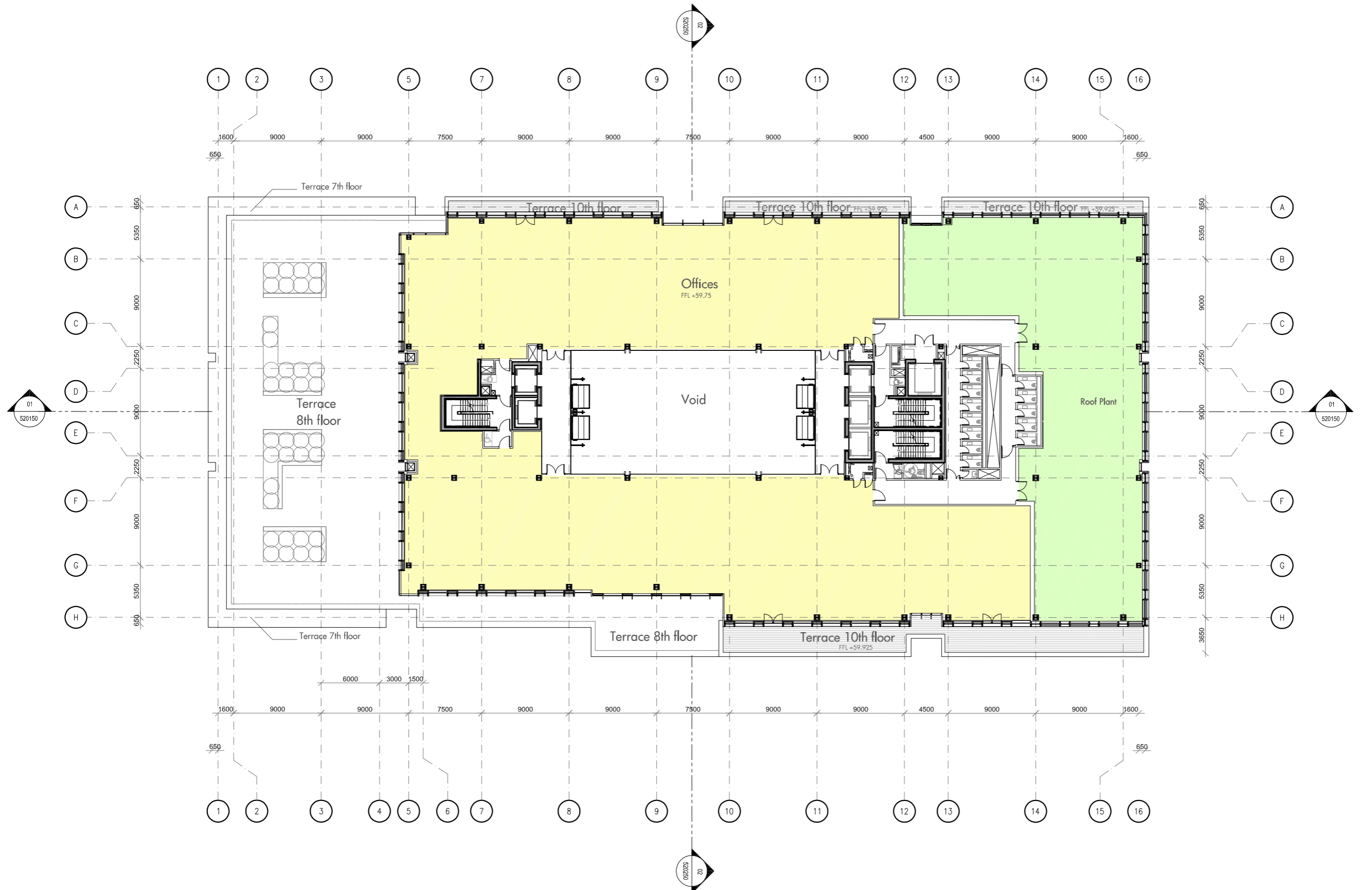
Date	Drawn	Checked	BS	Approved	PL
	BS		BS		PL

Scale: **1:400 @A3** Date: **15.09.11**

WILMOTTE UK Ltd
Lichfield Studio
133, Oxford Gardens
London W10 6NE UK
T +44 (0) 2089697171
F +44 (0) 2089643407
E wilmotte@wilmotte.co.uk

file ...





notes

The contractor is responsible for checking dimensions, tolerances and references. Any discrepancy to be verified with the Architect before proceeding with the works.

Where an item is covered by drawings to different scales the larger scale drawing is to be worked to.

Do not scale drawing. Figured dimensions to be worked to in all cases.

Date	Rev	Comment

- CONSULTANTS
- Design Architect
Wilmotte UK Ltd
133 Oxford Gardens
London, UK W10 6NE
- Executive Architect
ADAMSON ASSOCIATES (INTERNATIONAL) LIMITED
8th Floor, One Canada Square
Canary Wharf
London, UK E14 5AB
- AKT II
Structural Engineer
100 St. John Street
London
UK, EC1M 4BH
- HOARE LEA
Glenn House
200-208 Tottenham Court Road
London, W1T 7PL
- Quantity Surveyor
Glenns
95 New Cavendish Street
London, W1W 6XF
- Fire Consultant
Aecon
63-77 Victoria Street
St Albans, Herts AL1 3EP

Issued by:
WILMOTTE UK Ltd

Purpose of issue
For Approval

Client
BNP PARIBAS REAL ESTATE

ARGENT

Project
King's Cross Central
Plot B1

Drawing
10th Floor Plan

Drawing no	Rev	
Wuk_1440_PL_511050	-	
Date	Date	Date
Drawn BS	Checked BS	Approved PL
Scale 1:400 @ A3	Date 15.09.11	

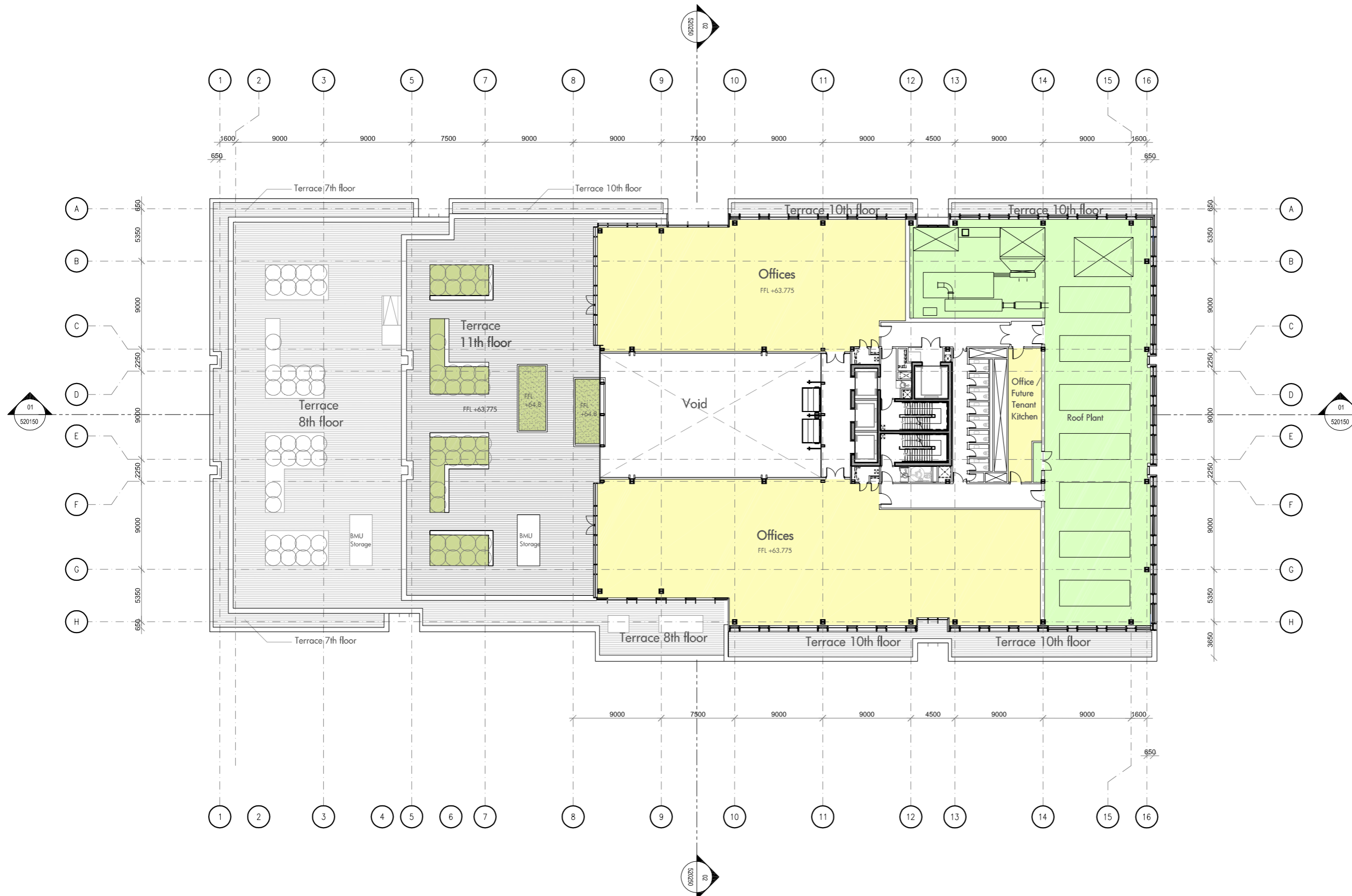
WILMOTTE UK Ltd
Litchfield Studio
133, Oxford Gardens
London W10 6NE UK
T +44 (0) 2089697171
F +44 (0) 2089843407
E wilmotte@wilmotte.co.uk

akt II **adamson ASSOCIATES (INTERNATIONAL) LTD**

HOARE LEA **gleeds**
AECOM



file ...



notes

- The contractor is responsible for checking dimensions, tolerances and references. Any discrepancy to be verified with the Architect before proceeding with the works.
- Where an item is covered by drawings at different scales the larger scale drawing is to be worked to.
- Do not scale drawing. Figured dimensions to be worked to in all cases.

Date	Rev	Comment

CONSULTANTS

Design Architect
Wilmotte UK Ltd
133 Oxford Gardens
London, UK W1O 9NE

Executive Architect
ADAMSON ASSOCIATES (INTERNATIONAL) LIMITED
69 Floor, One Canada Square
Canary Wharf
London, UK E14 5AB

AKT II Structural Engineer
100 St. John Street
London, UK EC1M 4EH

HOARE LEA
Glen House
200-208 Tottenham Court Road
London, W1T 7PL

Quantity Surveyor
Gleeds
95 New Cavendish Street
London, W1W 6XF

File Consultant
Aecon
63-77 Victoria Street
St Albans, Herts AL1 3EP

Issued by:
WILMOTTE UK Ltd

Purpose of issue
For Approval

Client
BNP PARIBAS REAL ESTATE

ARGENT

Project
King's Cross Central
Plot B1

Drawing
11th Floor Plan

Drawing no	Rev		
Wuk_1440_PL_511150	-		
Date	Drawn	Checked	Approved
...	BS	BS	PL
Scale	1:400 @A3	Date	15.09.11

WILMOTTE UK Ltd
Lichfield Studio
133, Oxford Gardens
London W1O 9NE UK
T +44 (0) 2089697171
F +44 (0) 2089843407
E wilmotte@wilmotte.co.uk

akt II **adamson**
ASSOCIATES (INTERNATIONAL) LTD

HOARE LEA **gleeds**
AECOM



file ..

