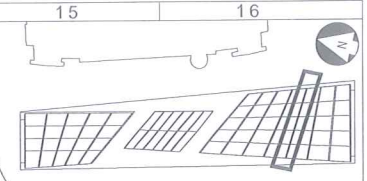


B - B Section E-W Internal View
SCALE 1:25



KEY PLAN - TOTTENHAM COURT ROAD STATION

KEY HEALTH AND SAFETY RISKS:
Installation:
 • Handling of heavy parts as facade or roof glass
 • Falling from height when working from scaffold or elevating platform
Operation:
 • Falling from height by person climbing glass structure
 • Fall from height during cleaning or maintenance of interior or exterior
 • Fall from height by access to internal plinths / ledges
 • Vehicle driving through glass envelope and falling into street
 • Handling and movement of steel cladding for maintenance of cabling behind
 • Traffic at road level close proximity to North Plaza entrance
 • Installation and maintenance of services at high level in the glass entrances
Demolition:
 • Handling of heavy parts

Notes:
 • General notes see drawing no. SLE-N105-8742-STR-D-PLN-1-0001

IFC

Rev.	By	Revision	Desn	T.Chkd	T.Appd	Date
06	MAP	Hypocrite, glassfin, coverhead & secondary beam	MAP	HEM	HW	21.03.2014
05	RIR	Hypocrite, health & safety box, new detail	RIR	HEM	HW	30.06.2013
04	RIR	general revised, see detail	RIR	HEM	HW	25.07.2013
03	RIR	primary fin connection, corner, additional marking	RIR	HEM	HW	16.05.2013
02	MAP	primary fin inserts moved, corner profile changed	MAP	HEM	HW	29.03.2013
01	MAP	profiles glass keels, steelbox update	MAP	HEM	HW	12.03.2013
00	RIR	first issue	RIR	HEM	HW	06.12.2012



London Underground Limited.

Technical Contractor: **seele**
 seele GmbH & Co. KG
 Gewerkepark 2
 A-4861 Schörfeld
 Tel: +43 7662 22000-0
 Fax: +43 7662 22000-400

Status: **FOR ACCEPTANCE**

Design: **ARCHITECT - STANTON WILLIAMS**

Use: **NORTHERN CENTRAL** Location Code: **N105**

Location: **TOTTENHAM COURT ROAD**

Site/Project: **TOTTENHAM COURT ROAD STATION UPGRADE**

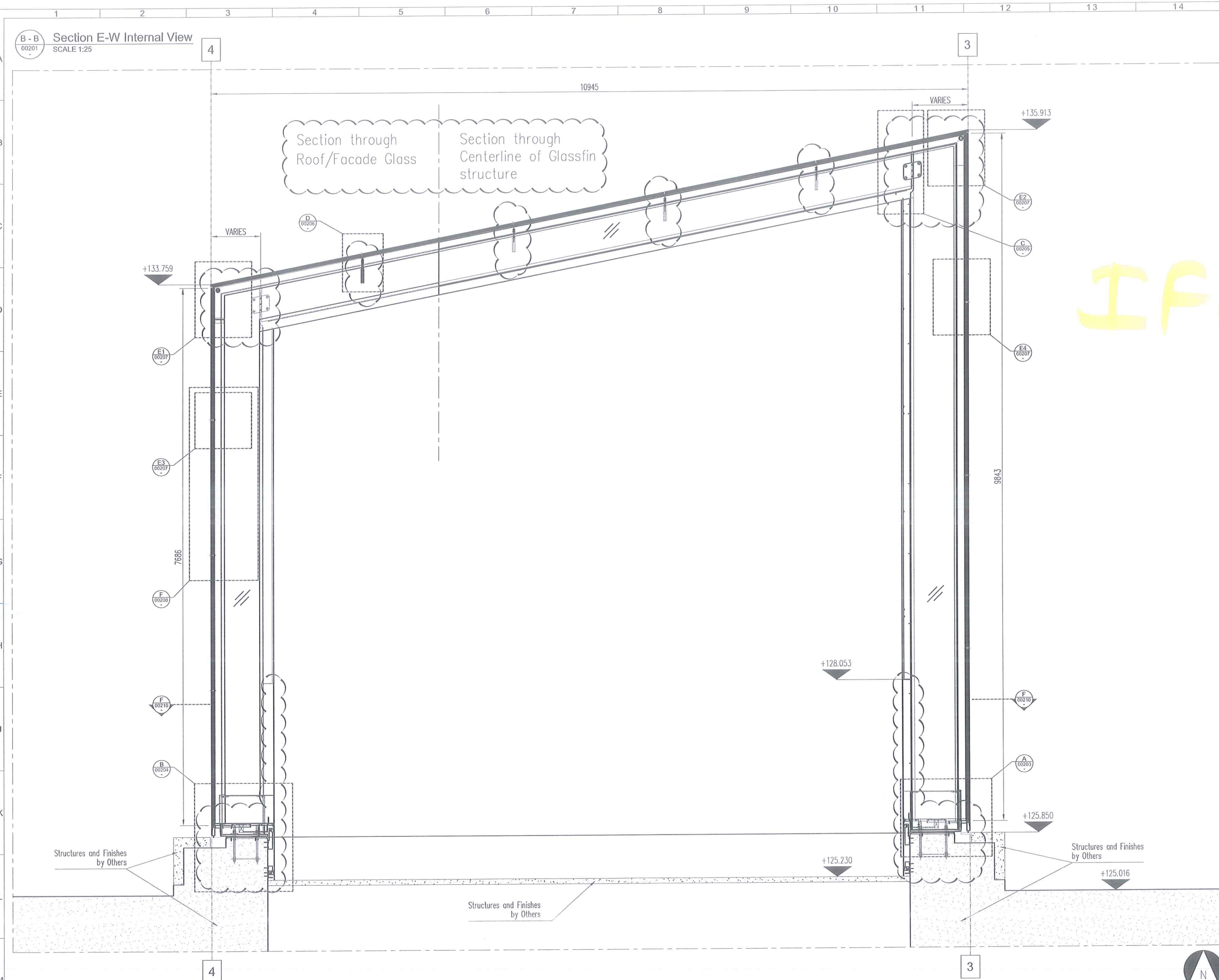
Title: **Section E-W Internal View South**

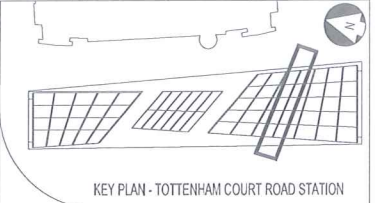
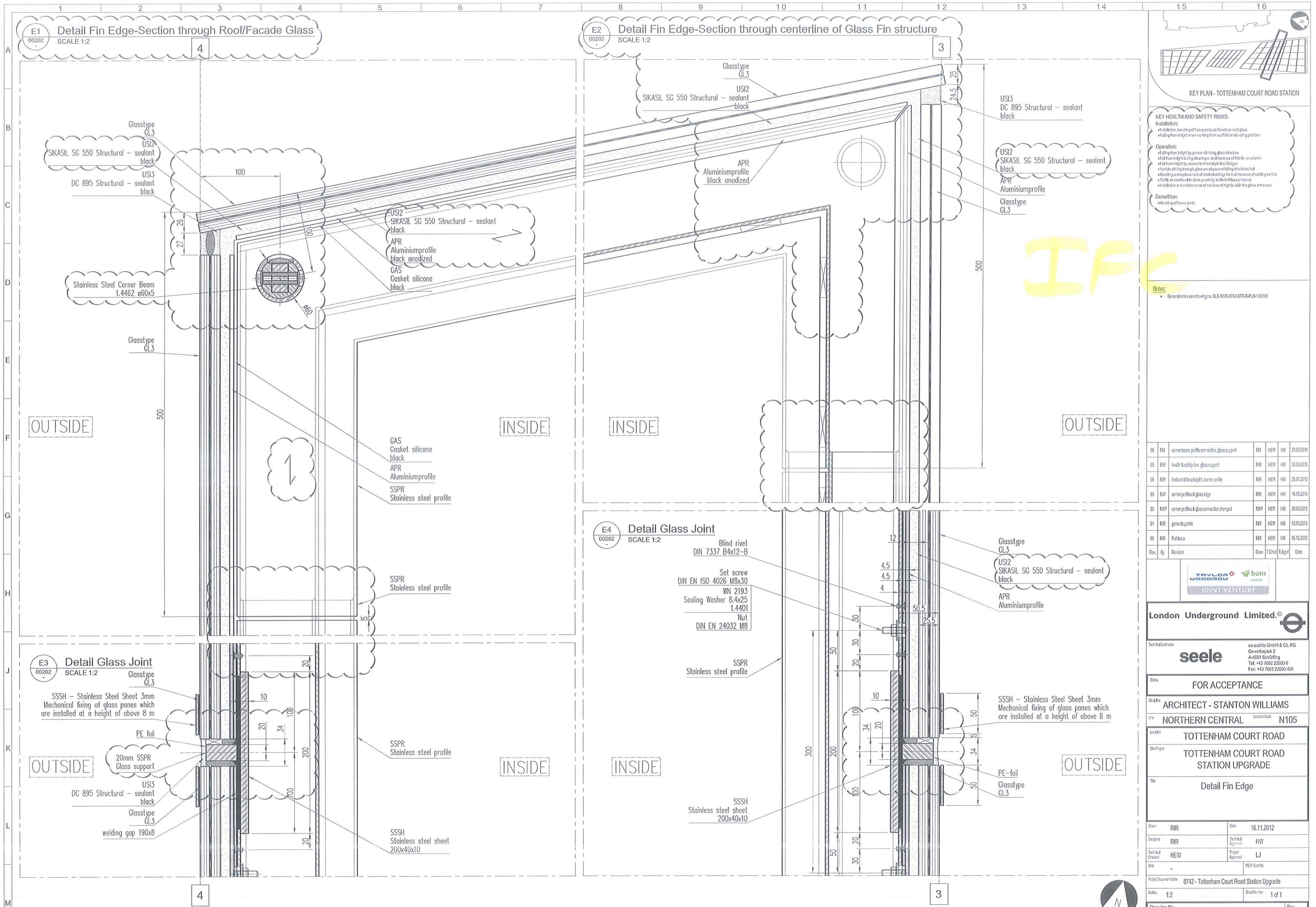
Drawn	RIR	Date	08.11.2012
Designed	RIR	Technical Approver	HW
Technical Check	HEM	Project Approver	LJ
Grid		PER Cost No	

Project Document Code: **8742 - Tottenham Court Road Station Upgrade**

Scales: 1:25 Sheet Number: 1 of 1

Drawing No. **SLE-N105-8742-STR-D-SEC-1-00202** Rev. **06**





KEY HEALTH AND SAFETY RISKS:

Installation:

- Falling from height
- Installation, handling of heavy parts on facade or roof glass
- Falling from height when working from scaffold or erecting platform

Operation:

- Falling from height by person climbing glass structure
- Fall from height during cleaning or maintenance of interior or exterior
- Fall from height by access to internal panels / ledges
- Vehicle driving through glass envelope and falling into street
- Handling and replacement of steel cladding for maintenance of casting behind
- Traffic at road level in close proximity to North Plaza entrance
- Installation and maintenance of services at high level in the glass entrance

Demolition:

- Handling of heavy parts

Notes:

- General notes see drawing no. SLE-N105-8742-STR-D-PLN-1-00101

Rev.	By	Revision	Descn	TCR/td	TA/ptd	Date
06	RUJ	corner beam, profile correction, glass support	RUJ	HEM	HW	21.03.2014
05	RR	health & safety doc, glass support	RR	HEM	HW	30.08.2013
04	RR	horizontal facade joint, corner profile	RR	HEM	HW	25.07.2013
03	RR	corner profiles & glass edge	RR	HEM	HW	16.05.2013
02	MPP	corner profiles & glass connection changed	MPP	HEM	HW	29.03.2013
01	RR	general update	RR	HEM	HW	12.03.2013
00	RR	first issue	RR	HEM	HW	06.12.2012



London Underground Limited.

seele
 seele GmbH & Co. KG
 Gewerbepark 2
 A-4851 Schörfing
 Tel: +43 7662 22000-0
 Fax: +43 7662 22000-400

Status: **FOR ACCEPTANCE**

Design: **ARCHITECT - STANTON WILLIAMS**

Line: **NORTHERN CENTRAL** Location Code: **N105**

Location: **TOTTENHAM COURT ROAD**

Site/Project: **TOTTENHAM COURT ROAD STATION UPGRADE**

Title: **Detail Fin Edge**

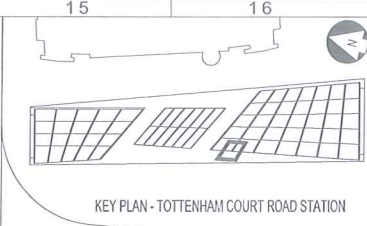
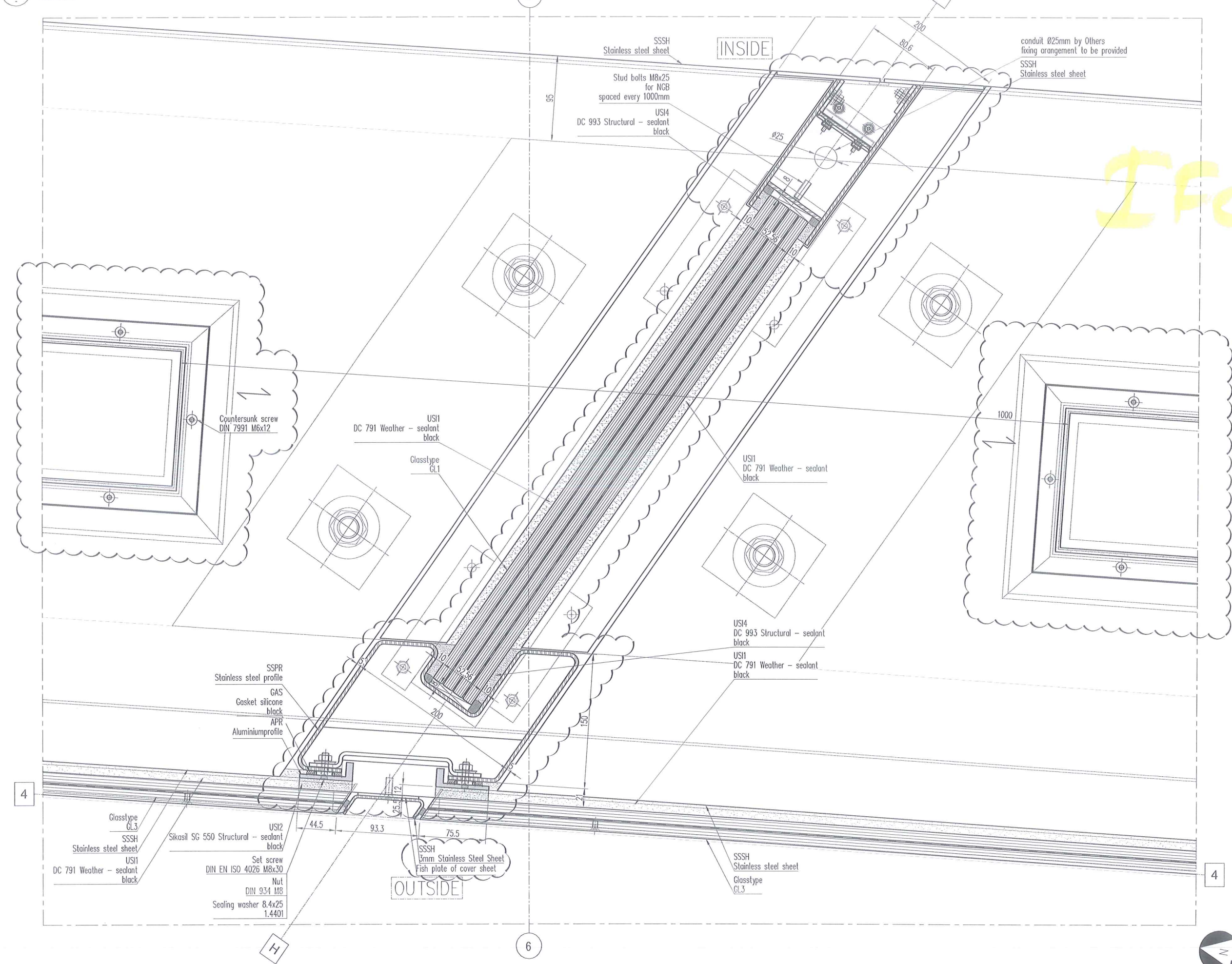
Drawn	RRR	Date	16.11.2012
Designed	RRR	Technical Approval	HW
Technical Check	HEM	Project Approval	LJ
Grid	-	PE21/ContNo	

Project Document Code: **8742 - Tottenham Court Road Station Upgrade**

Scales: 1:2 Sheet Number: 1 of 1

Drawing No. **SLE-N105-8742-STR-D-DET-1-00207** Rev. **06**

B
00210
Detail Horizontal Standard Section
SCALE 1:2



KEY HEALTH AND SAFETY RISKS:

Installation:

- Falling from height when working from scaffolds or elevating platform

Operation:

- Falling from height by person climbing glass structure
- Fall from height during cleaning or maintenance of interior or exterior
- Fall from height by access to internal glazing ledges
- Vehicle driving through glass envelope and falling into ticket hall
- Handling and replacement of steel claddings for maintenance of cladding behind
- Traffic on road level in close proximity to form facade entrance
- Installation and maintenance of seals at high level in the glass entrance

Demolition:

- Handling of heavy parts

Notes:

- General notes see drawing no. SLE-N105-8742-STR-D-PLN-1-00101

Rev.	By	Revision	Drawn	Checked	Date
05	RJR	Hygiene, site cladding gap in glass fixing	HEM	HEM	21.02.2014
04	RJR	Hygiene health & safety box out for LED box changed	RJR	HEM	30.08.2013
03	RJR	SS-cladding, bottom glazing detail, SS-profile cover	RJR	HEM	25.07.2013
02	RJR	stud bolt on inner SS-profile, light channel	RJR	HEM	16.05.2013
01	MPP	change of glass connection	MPP	HEM	29.03.2013
00	RJR	first issue	RJR	HEM	12.02.2013



London Underground Limited.

seele
seele GmbH & Co. KG
Gewerbepark 2
A-4831 Schönbühel
Tel: +43 7662 22000-0
Fax: +43 7662 22000-400

Site: **FOR ACCEPTANCE**

Designer: **ARCHITECT - STANTON WILLIAMS**

Use: **NORTHERN CENTRAL** Location Code: **N105**

Location: **TOTTENHAM COURT ROAD**

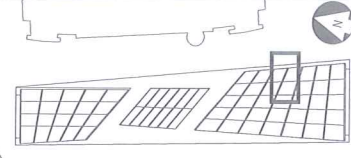
Site/Project: **TOTTENHAM COURT ROAD STATION UPGRADE**

Title: **Detail Horizontal Section @ GRID H4**

Drawn	RJR	Date	12.12.2012
Designed	RJR	Technical Approval	HW
Technical Check	HEM	Project Approval	LJ
Grid	-	PERI Code No.	
Project Document Code	8742 - Tottenham Court Road Station Upgrade		
Scale	1:2	Sheet Number	1 of 1

Drawing No. **SLE-N105-8742-STR-D-DET-1-00212** Rev. **05**

Top Connection
SCALE

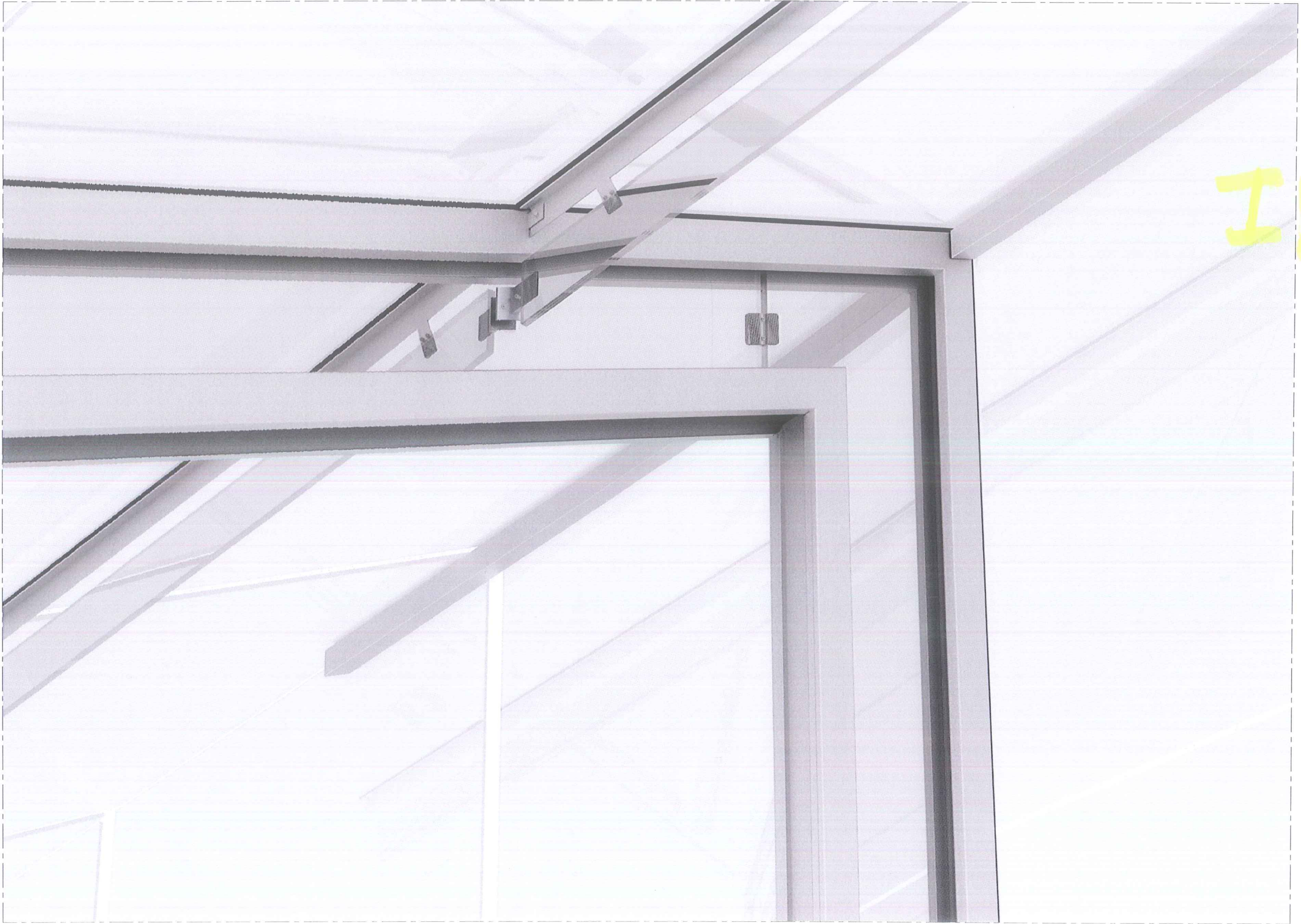


KEY PLAN - TOTTENHAM COURT ROAD STATION

- KEY HEALTH AND SAFETY RISKS:**
- Falling from height by person climbing glass structure or open downpipe
 - Fall from height during cleaning or maintenance of interior
 - Fall from height during cleaning or maintenance of the exterior of the entrance
 - Fall from height by access to internal structural ledges
 - Vehicle driving through glass envelope and falling into ticket hall
 - Installation, handling, maintenance and replacement of facade or roof glass.
 - Installation, handling, maintenance and replacement of steel claddings.
 - Traffic at road level in close proximity to North Fica entrance
 - Installation and maintenance of sashes at high level in the glass entrance
 - Damage to glazing panels causes disproportionate failure
 - Damage to glass fins causes disproportionate failure
 - Heat building
 - Spontaneous glass failure

IA

Notes:
• General notes see drawing no. SLE-N105-8742-STR-D-PLN-1-0010'



Rev.	By	Revision	Desn	T.Chkd	T.Appd	Date	
01	YES	Health & Safety box		YES	HEM	HR	30.08.2013
00	RIR	Initial issue		RIR	HEM	HR	17.07.2013



London Underground Limited.

Technical Contractor: **seele**
see-austria GmbH & Co. KG
Gewerbestraße 2
A-2611 Schörling
Tel: +43 7662 22000-0
Fax: +43 7662 22000-400

Status: **FOR ACCEPTANCE**

Discipline: **ARCHITECT - STANTON WILLIAMS**

Line: **NORTHERN CENTRAL** Location Code: **N105**

Location: **TOTTENHAM COURT ROAD**

Station/Project: **TOTTENHAM COURT ROAD STATION UPGRADE**

Title: **Sketch - Top Connection**

Drawn: **RIR** Date: **03.07.2013**

Designed: **RIR** Technical Approval: **HW**

Technical Control: **HEM** Project Approval: **LJ**

Grid: - FEN/Coord No.

Project Document Code: **8742 - Tottenham Court Road Station Upgrade**

Scale: - Sheet Number: **1 of 1**

Drawing No. **SLE-N105-8742-STR-D-SKE-1-00262** Rev. **01**