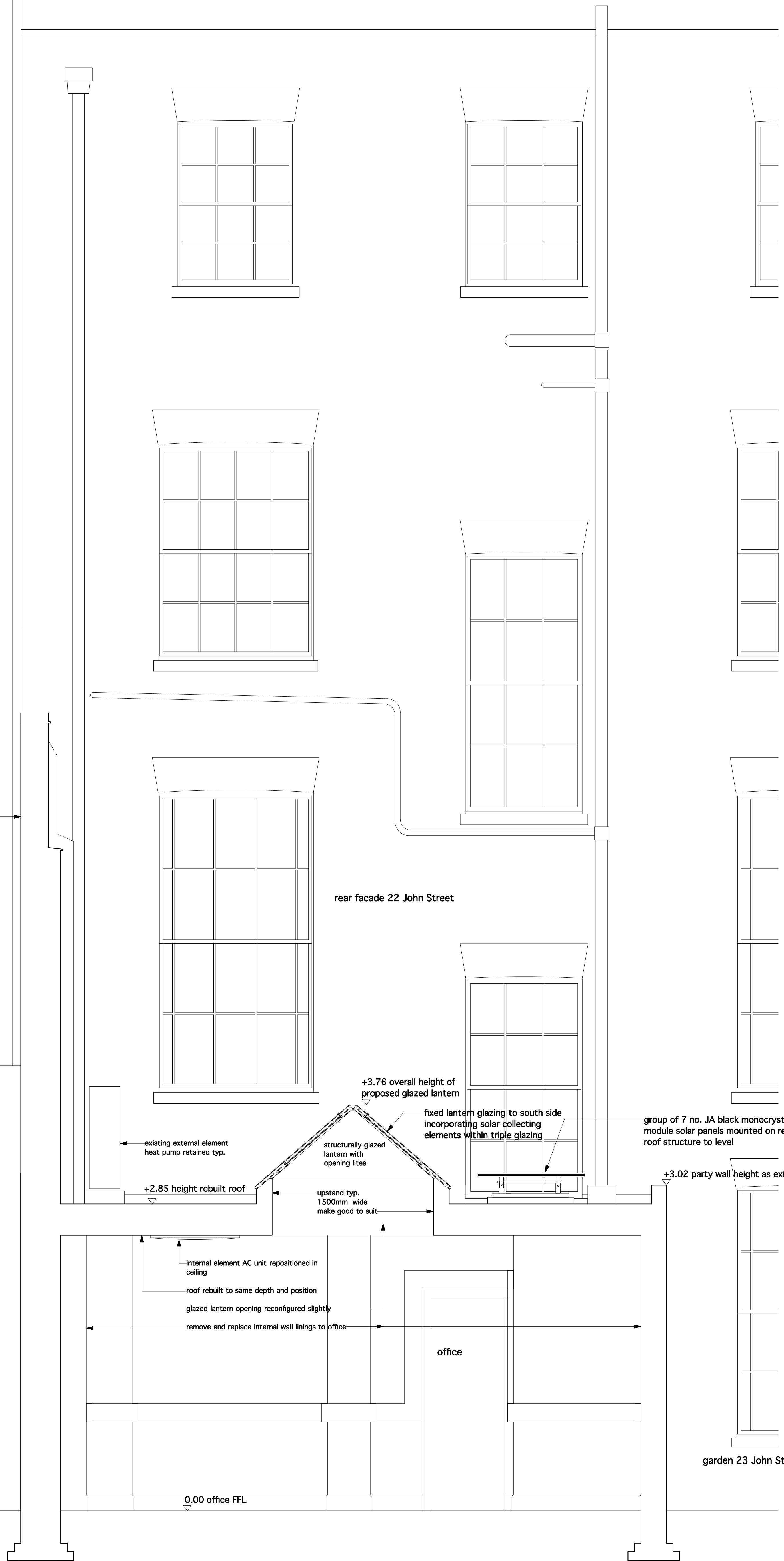


21a John Street

22 John Street

23 John Street

freestanding party wall section  
 existing HVAC duct to 21a Johns Street  
 existing plant to 21a John Street



existing external element heat pump retained typ.  
 +2.85 height rebuilt roof  
 +3.76 overall height of proposed glazed lantern  
 structurally glazed lantern with opening lites  
 fixed lantern glazing to south side incorporating solar collecting elements within triple glazing  
 group of 7 no. JA black monocrystalline module solar panels mounted on replaced roof structure to level  
 +3.02 party wall height as existing  
 upstand typ. 1500mm wide make good to suit

internal element AC unit repositioned in ceiling  
 roof rebuilt to same depth and position  
 glazed lantern opening reconfigured slightly  
 remove and replace internal wall linings to office  
 office  
 0.00 office FFL

garden 23 John Street

proposed section b-b looking towards rear facade with solar panel array positioned on roof 1:20