

GENERAL NOTES

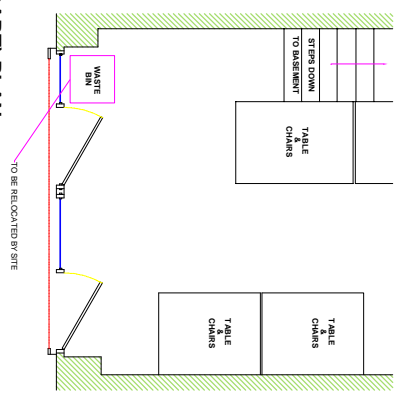
LIGHTING :- ALL LIGHTINGS TO BE POSITIONED TO AVOID DIRECT GLARE ON THE EYES OF THE USER AND UNWANTED REFLECTIONS FROM THE SCREEN OR OPERATING FEATURES. GLARE FROM LIGHTING TO BE AVOIDED.
ACCESS TO ATM :- COMFORTABLE SIDE REACH CONTOURS FOR WHEELCHAIR USERS TO COMPLY WITH FIGURE 10 OF THE DOCUMENT "ACCESS TO ATM'S UK DESIGN GUIDELINES 2002".
COMFORTABLE VIEWING ANGLES FOR AMBULANT DISABLED PERSONS TO COMPLY TO FIGURE 4 OF THE DOCUMENT "ACCESS TO ATM'S UK GUIDELINES 2002".
COMFORTABLE VIEWING ANGLES AND REACH CONTOURS FOR NON DISABLED PEOPLE TO COMPLY WITH FIGURE 15 OF THE DOCUMENT "ACCESS TO ATM'S UK GUIDELINES 2002".
SIGNAGE :- ALL SIGNAGE TO CONFORM TO BS 8306:2001 SECTIONS 9.2.2 LOCATION & DESIGN OF SIGNS & INFORMATION AND 9.2.3 VISUAL SIGNS.
ALL NEW GLAZING CONFORMS TO BS 6206.
ALL ELECTRICAL WORK CONFORMS TO BS 7871.

SITE NOTES

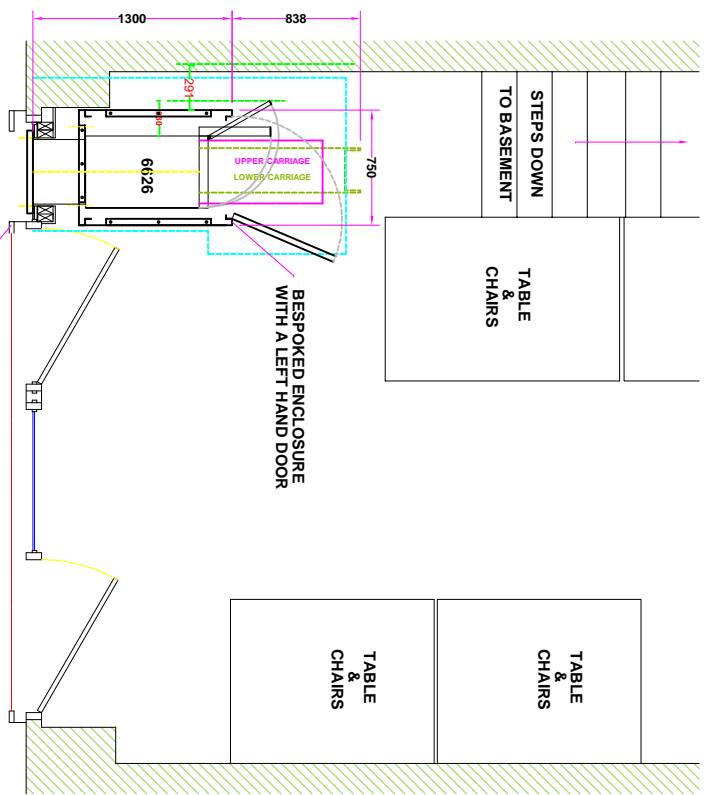
FLOOR CONSTRUCTION:
 CERAMIC TILES ON CONCRETE
 REMOVE EXISTING GLAZING PANEL.
 MODIFY SHUTTER COMPLETE WITH NEW GUIDE RAIL AND INFILL PANEL
 INSTALL WHITE LAMINATE PANEL, SECURITY STUDWORK, BESPOKE SECURITY ENCLOSURE WITH LEFT HAND DOOR, 6mm BASE PLATE, ATM, ELECTRICS, FLOOR SUPPORTS, ILLUMINATED SIGN AND RECEIPT BIN
NOTE:- ALL WORKS DEPENDANT ON DESTRUCTIVE FLOOR SURVEY RESULTS. BASEMENT ACCESS TO BE ARRANGED WITH SITE

WORK TO BE CARRIED OUT BY OTHERS

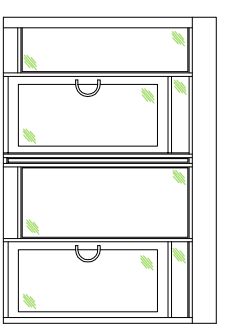
RELOCATE 1X WASTE BIN



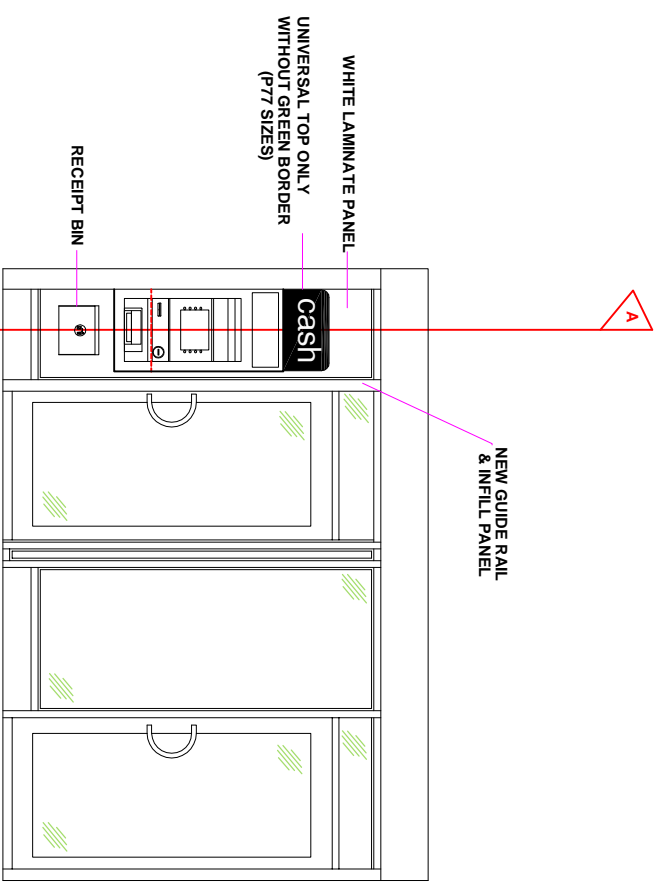
EXISTING (PART) PLAN



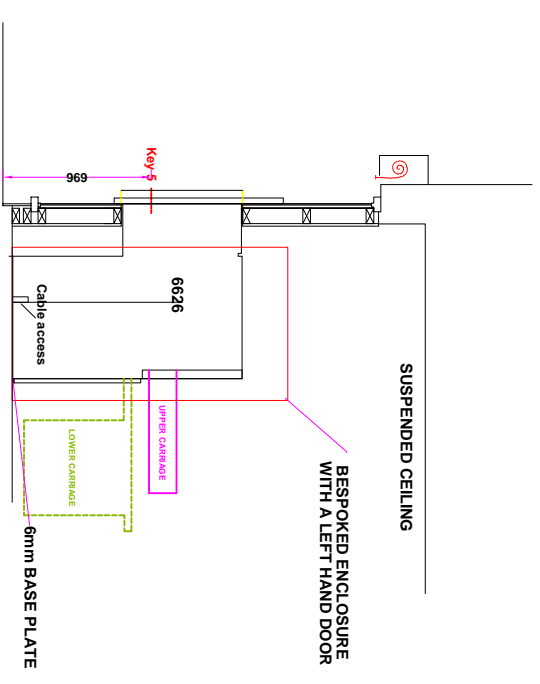
PROPOSED (PART) PLAN



EXISTING ELEVATION



PROPOSED ELEVATION



SECTION VIEW A-A

EXISTING SECTION VIEW A-A

0 1 2 3
 Scale in Metres Scale 1:100

0 1 2 3
 Scale in Metres Scale 1:50

SITE ADDRESS
 PIZZA B LTD
 53 CAMDEN HIGH STREET, CAMDEN,
 LONDON, NW1 7JH

TITLE		PROPOSED AUTOMATED TELLER MACHINE (ATM) INSTALLATION FOR CASHZONE	
DRAWN	DATE	SCALE	REVISION
DG	13/02/12	VARIOUS @ A3	01
REF/REQ. No.	SHEET	REVISION	DESCRIPTION
E011802			BOTTOM SIGN REMOVED

NAME:-	POSITION:-	APPROVED:-
DATE:-	DATE:-	SIGNED:-

drawing approval