



SAP No: P128084

Client: Bupa

Project: Battle Bridge House

Title: External Design Scheme - Planning Apporval

Site address: Battlebridge House, 300-306 Greys Inn Road, Holborn, WC1X 8DU

Project manager: S.Williamson

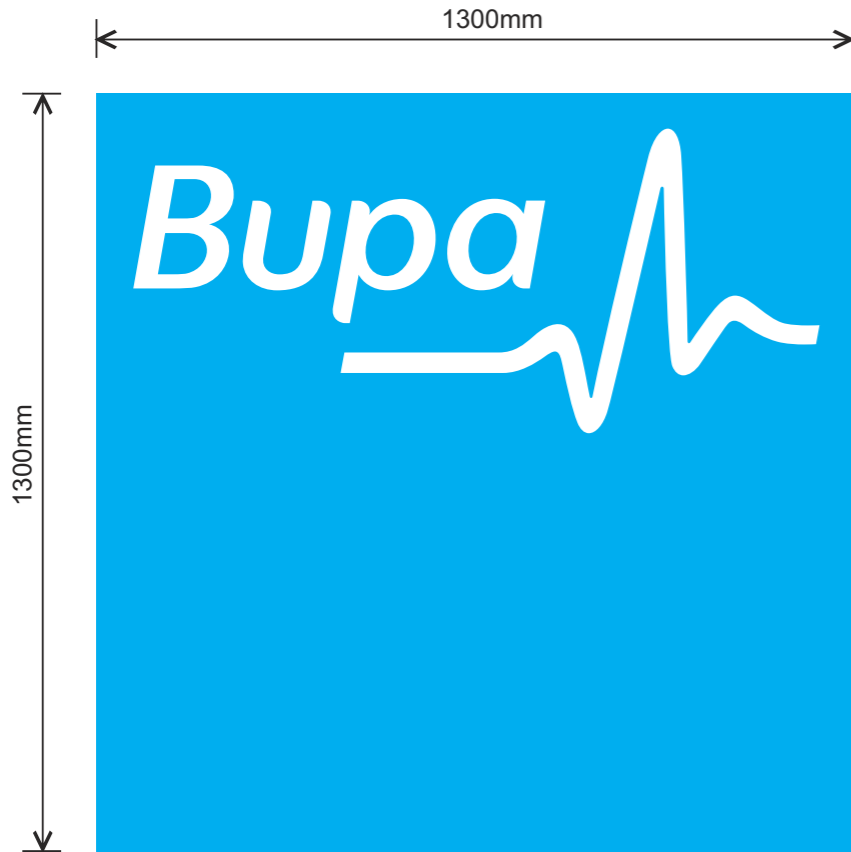
Drawn by: L.Carter

Date: 23.07.2014

Revision: A

External signage | Fascia Sign A

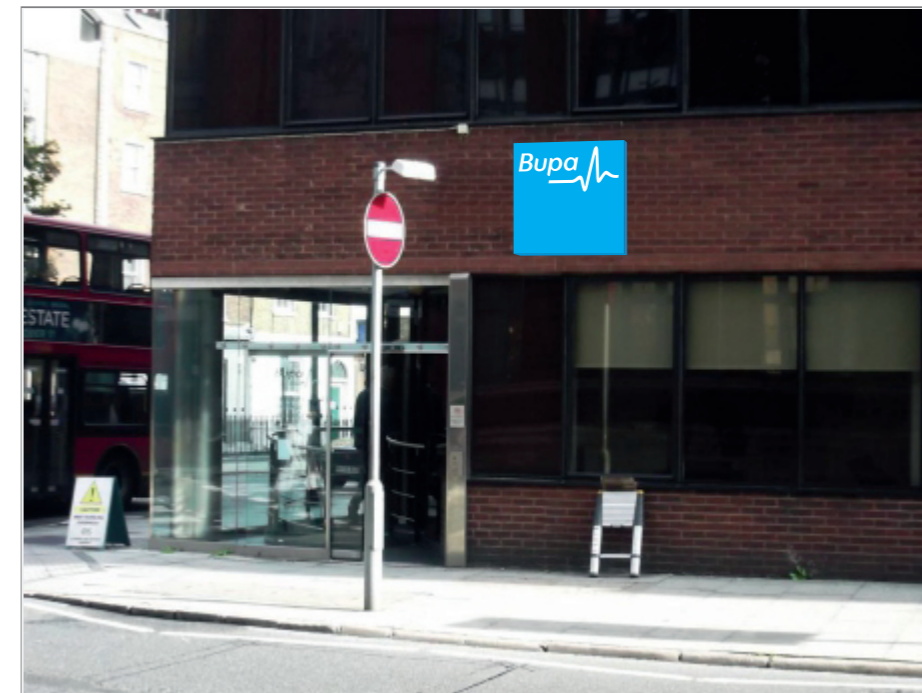
2mm thick folded aluminium panels with 80mm returns finished blue to match PMS Cyan. Panels to be fret cut and pushed through with Bupa icon 10mm thick opal 050 acrylic illuminated only - Cyan to remain non-illuminated. Internally illuminated via LEDs. Sign to be fitted back to brickwork via angled fixing rails.



Existing



Proposed



COPYRIGHT © The details shown on this drawing are confidential and are the exclusive property of Principle Group of Companies. No use, copy or disclosure of this disclosure of this drawing may be made without written permission and it is to be returned to Principle Group of Companies upon request.

Tandem Industrial Estate Waterloo Huddersfield
 HD5 0AL United Kingdom
 T +44 (0)1484 430 003 F +44 (0)1484 430 047

Revision notes:



SAP No: P128084

Drawn by: LC

Client: Bupa

Checked by: SW

Project: Battle Bridge House

Scale: NTS

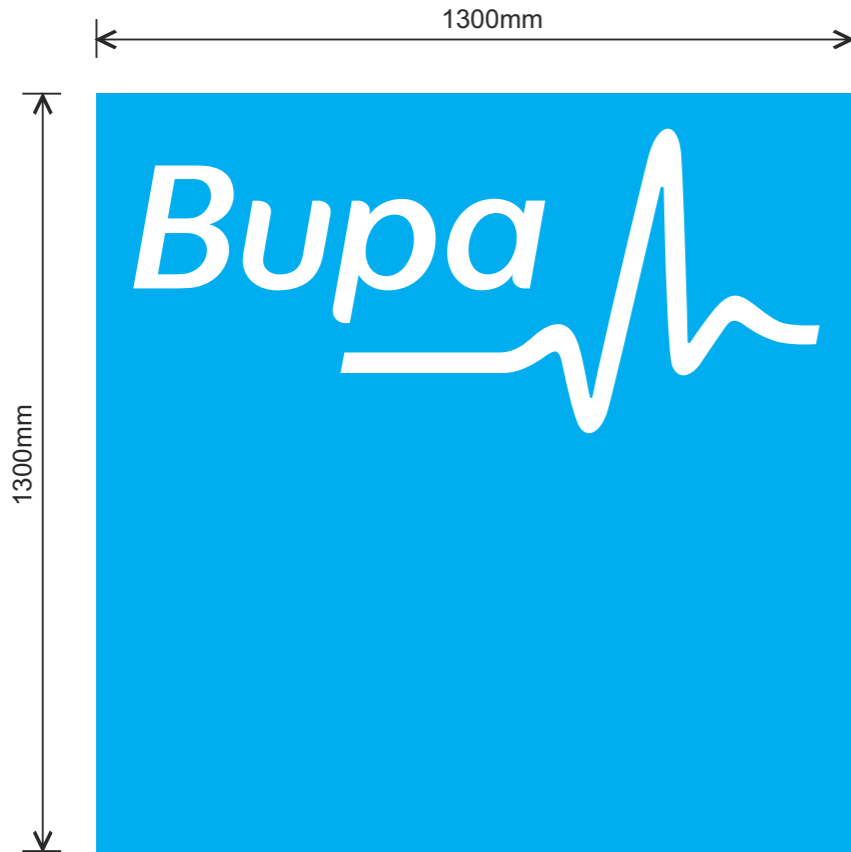
Title: Re-brand Sheme

Revision: A

Date: 24.07.2014

Page: 2 of 5

2mm thick folded aluminium panels with 80mm returns finished blue to match PMS Cyan. Panels to be fret cut and pushed through with Bupa icon 10mm thick opal 050 acrylic illuminated only - Cyan to remain non-illuminated. Internally illuminated via LEDs. Sign to be fitted back to brickwork via angled fixing rails.



Existing



Proposed



  COPYRIGHT © The details shown on this drawing are confidential and are the exclusive property of Principle Group of Companies. No use, copy or disclosure of this disclosure of this drawing may be made without written permission and it is to be returned to Principle Group of Companies upon request.

Tandem Industrial Estate Waterloo Huddersfield
HD5 0AL United Kingdom
T +44 (0)1484 430 003 F +44 (0)1484 430 047

Revision notes:



SAP No: P128084

Client: Bupa

Project: Battle Bridge House

Title: Re-brand Sheme

Date: 24.07.2014

Drawn by: LC

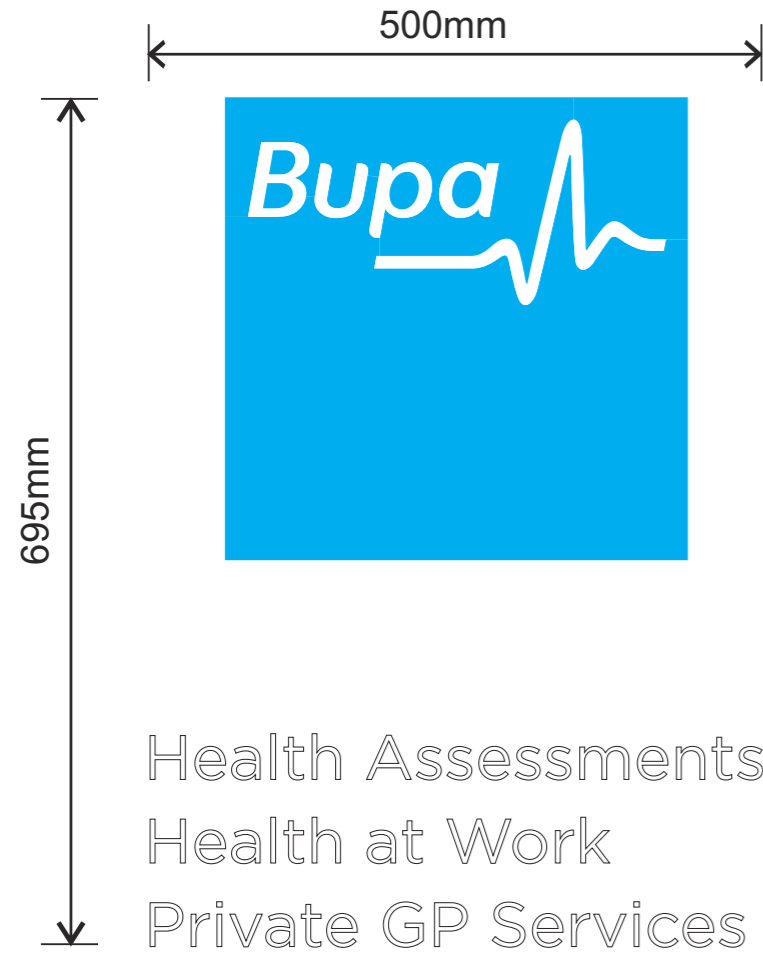
Checked by: SW

Scale: NTS

Revision: A

Page: 3 of 5

Rear digitally printed window graphic to corporate colours showing site services. Internally applied to glazing. Final positions determined on site.



Existing



Proposed



COPYRIGHT © The details shown on this drawing are confidential and are the exclusive property of Principle Group of Companies. No use, copy or disclosure of this disclosure of this drawing may be made without written permission and it is to be returned to Principle Group of Companies upon request.

Tandem Industrial Estate Waterloo Huddersfield
HD5 0AL United Kingdom
T +44 (0)1484 430 003 F +44 (0)1484 430 047

Revision notes:



SAP No: P128084

Drawn by: LC

Client: Bupa

Checked by: SW

Project: Battle Bridge House

Scale: NTS

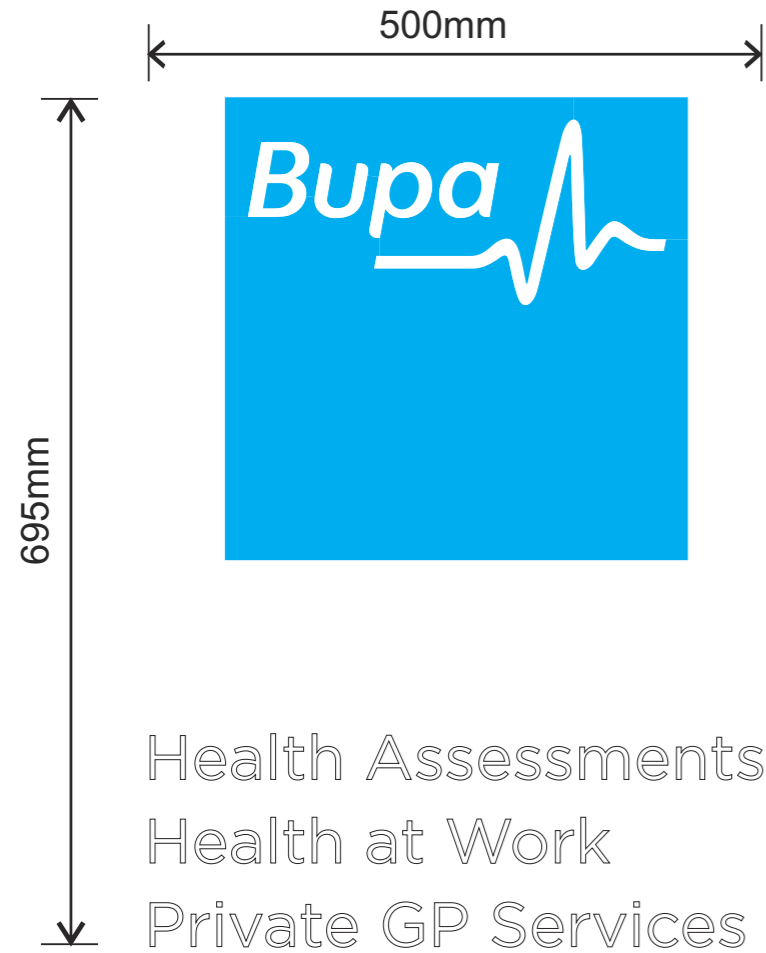
Title: Re-brand Sheme

Revision: A

Date: 24.07.2014

Page: 4 of 5

Rear digitally printed window graphic to corporate colours showing site services .Internally applied to glazing. Final positions determined on site.



Existing



Proposed



	<p><small>COPYRIGHT © The details shown on this drawing are confidential and are the exclusive property of Principle Group of Companies. No use, copy or disclosure of this disclosure of this drawing may be made without written permission and it is to be returned to Principle Group of Companies upon request.</small></p>	<p>Revision notes:</p>		<p>SAP No: P128084</p>	<p>Drawn by: LC</p>
<p>Tandem Industrial Estate Waterloo Huddersfield HD5 0AL United Kingdom T +44 (0)1484 430 003 F +44 (0)1484 430 047</p>				<p>Client: Bupa</p>	<p>Checked by: SW</p>
				<p>Project: Battle Bridge House</p>	<p>Scale: NTS</p>
				<p>Title: Re-brand Sheme</p>	<p>Revision: A</p>
				<p>Date: 24.07.2014</p>	<p>Page: 5 of 5</p>