

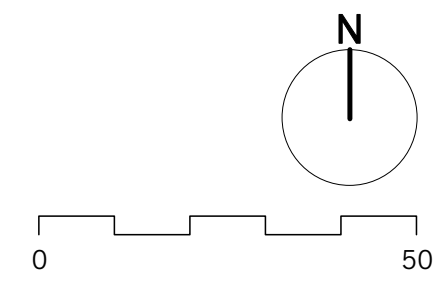
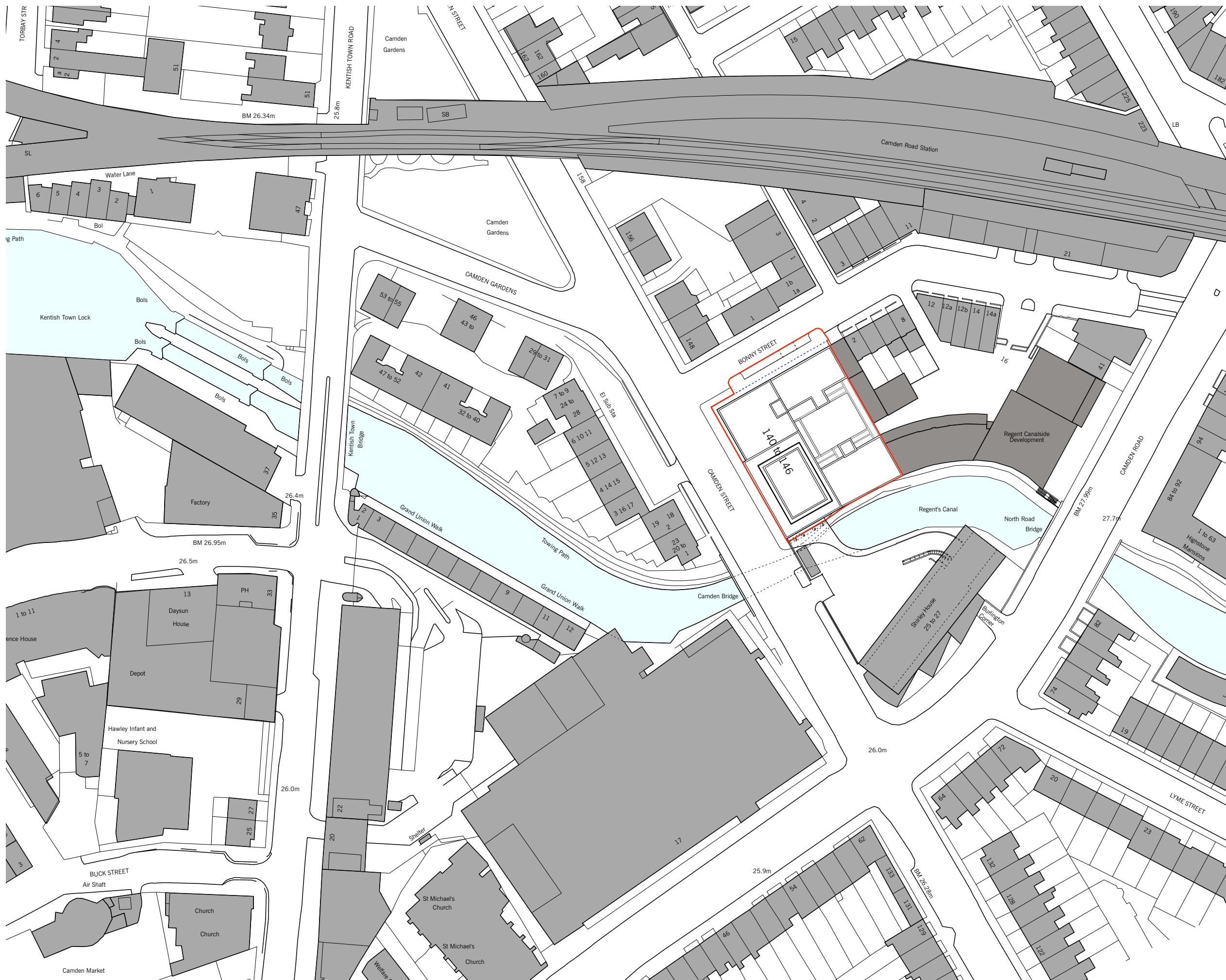
Proposed Drawings

# 140-146 CAMDEN STREET CAMDEN - LONDON NW1 9PF

## LIST OF PROPOSED DRAWINGS

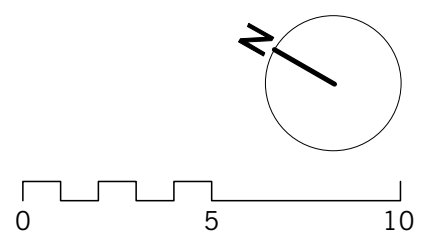
A110 : Proposed Location Plan	1:1000
A111 : Proposed Site Plan	1:500
A112 : Proposed Basement Plan (Plant Room)	1:200
A113 : Proposed Ground Floor Plan	1:200
A114 : Proposed Mezzanine Level Plan	1:200
A115 : Proposed First Floor Plan	1:200
A116 : Proposed Second Floor Plan	1:200
A117 : Proposed Third Floor Plan	1:200
A118 : Proposed Fourth Floor Plan	1:200
A119 : Proposed Fifth Floor Plan	1:200
A120 : Proposed Sixth Floor Plan	1:200
A121 : Proposed Seventh Floor Plan	1:200
A122 : Proposed Eighth Floor Plan	1:200
A123 : Proposed Roof Plan	1:200
A211 : Proposed South & West Context Elevation	1:500
A212 : Proposed North & East Context Elevation	1:500
A213 : Proposed West Elevation	1:200
A214 : Proposed South Elevation	1:200
A215 : Proposed East Elevation	1:200
A216 : Proposed North Elevation	1:200
A311 : Proposed Section AA	1:200
A312 : Proposed Section BB	1:200
A313 : Proposed Section CC	1:200
A314 : Proposed Section DD	1:200

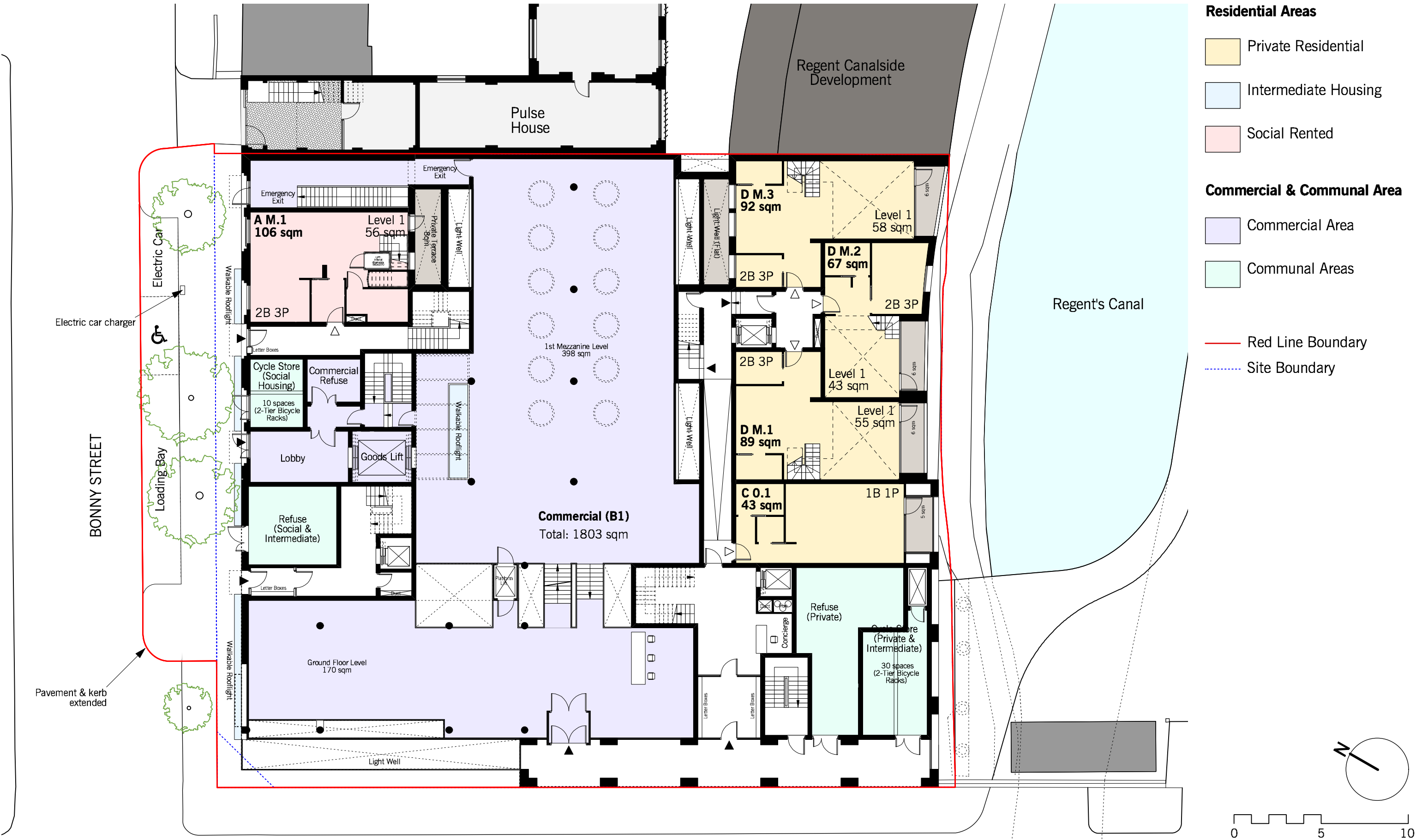
..... Site Boundary





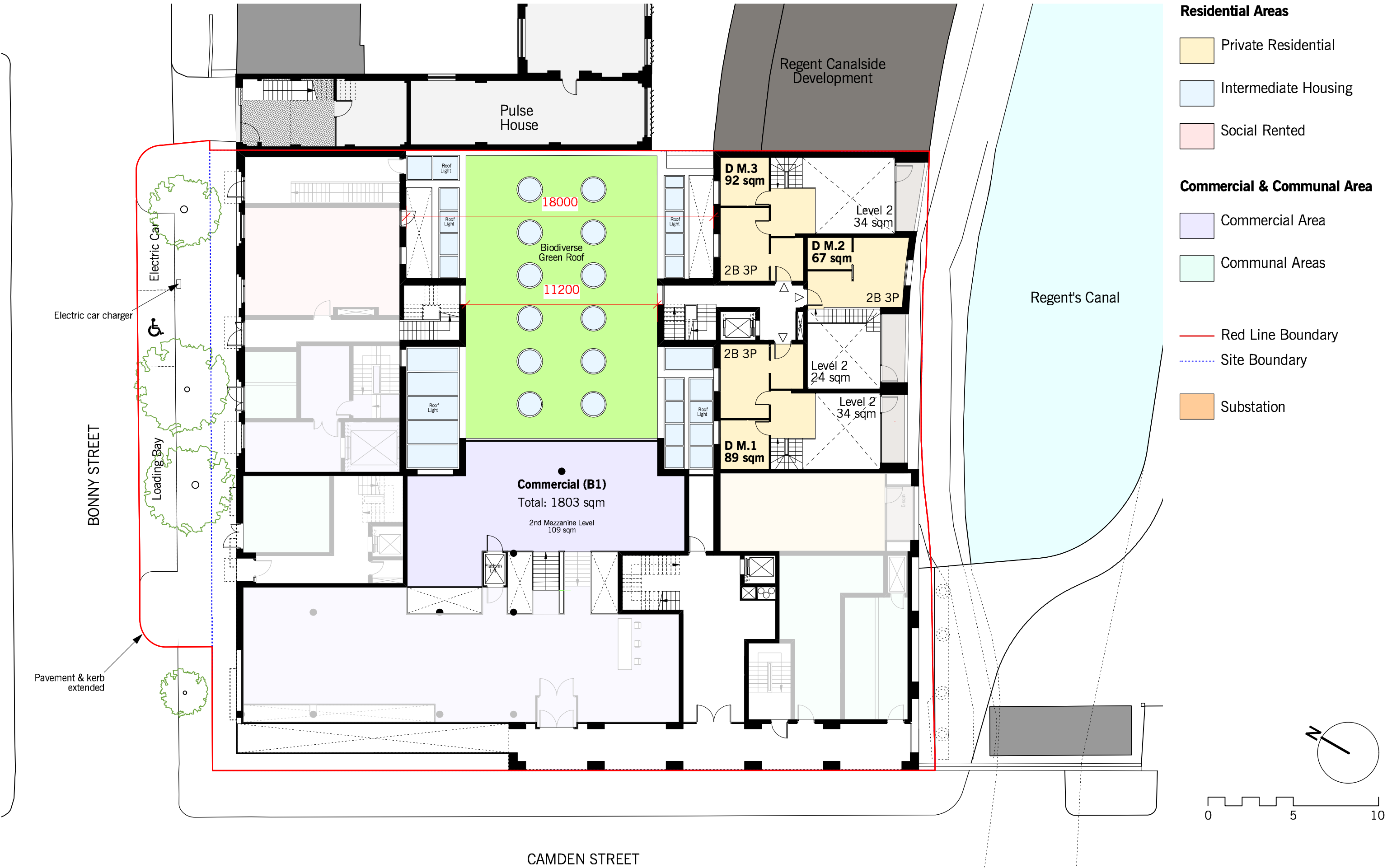
- Residential Areas**
- Private Residential
  - Intermediate Housing
  - Social Rented
- Commercial & Communal Area**
- Commercial Area
  - Communal Areas
  - Red Line Boundary
  - Site Boundary
  - Substation



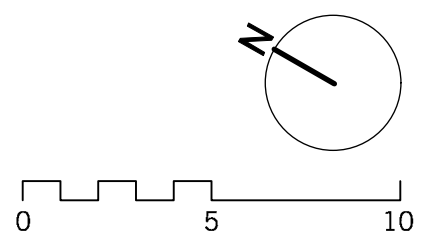


- Residential Areas**
- Private Residential
  - Intermediate Housing
  - Social Rented
- Commercial & Communal Area**
- Commercial Area
  - Communal Areas
- Red Line Boundary  
 - - - Site Boundary

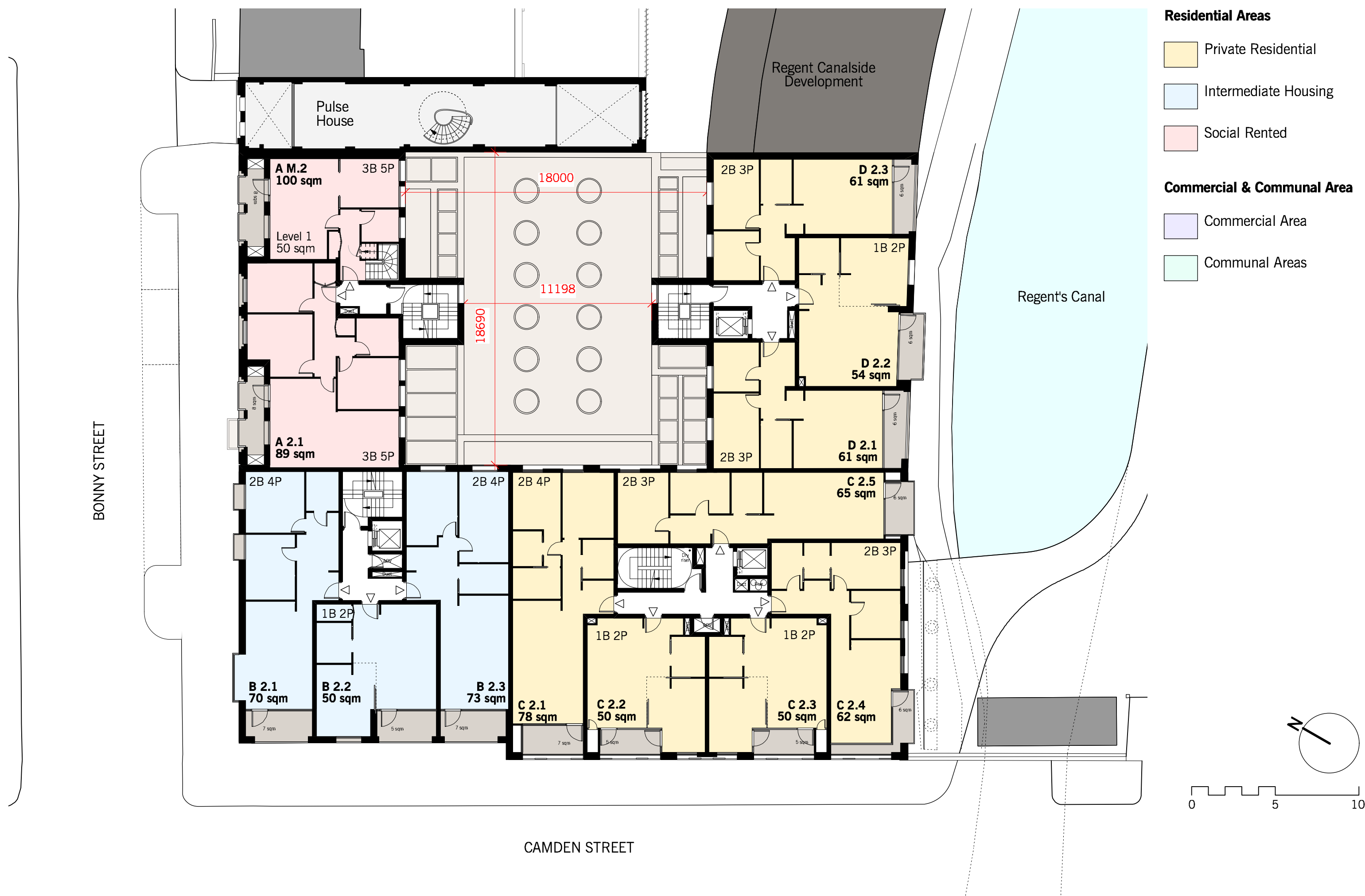
CAMDEN STREET



- Residential Areas**
- Private Residential
  - Intermediate Housing
  - Social Rented
- Commercial & Communal Area**
- Commercial Area
  - Communal Areas
  - Red Line Boundary
  - Site Boundary
  - Substation





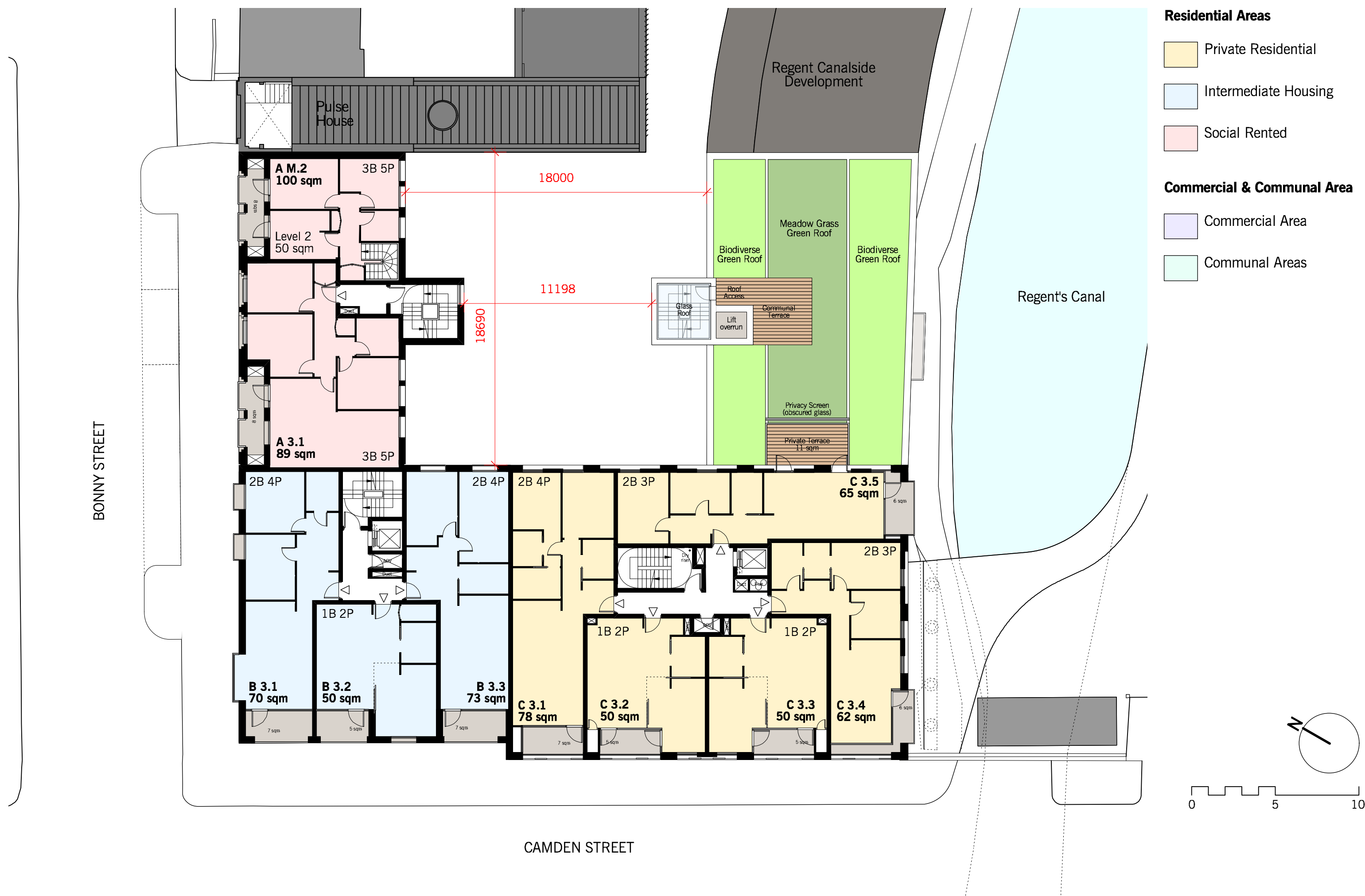


- Residential Areas**
- Private Residential
  - Intermediate Housing
  - Social Rented
- Commercial & Communal Area**
- Commercial Area
  - Communal Areas

BONNY STREET

CAMDEN STREET

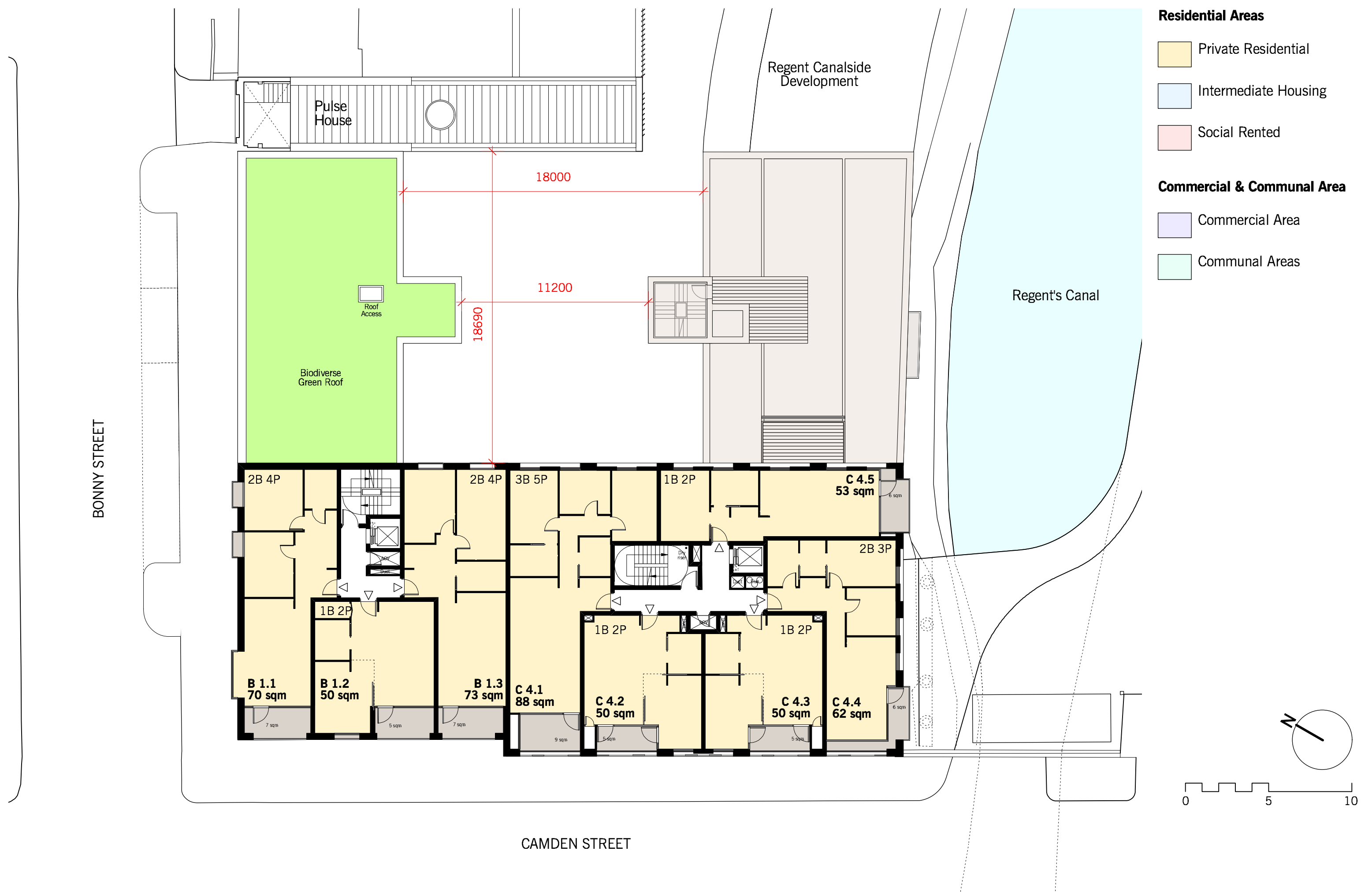




- Residential Areas**
- Private Residential
  - Intermediate Housing
  - Social Rented
- Commercial & Communal Area**
- Commercial Area
  - Communal Areas

BONNY STREET

CAMDEN STREET



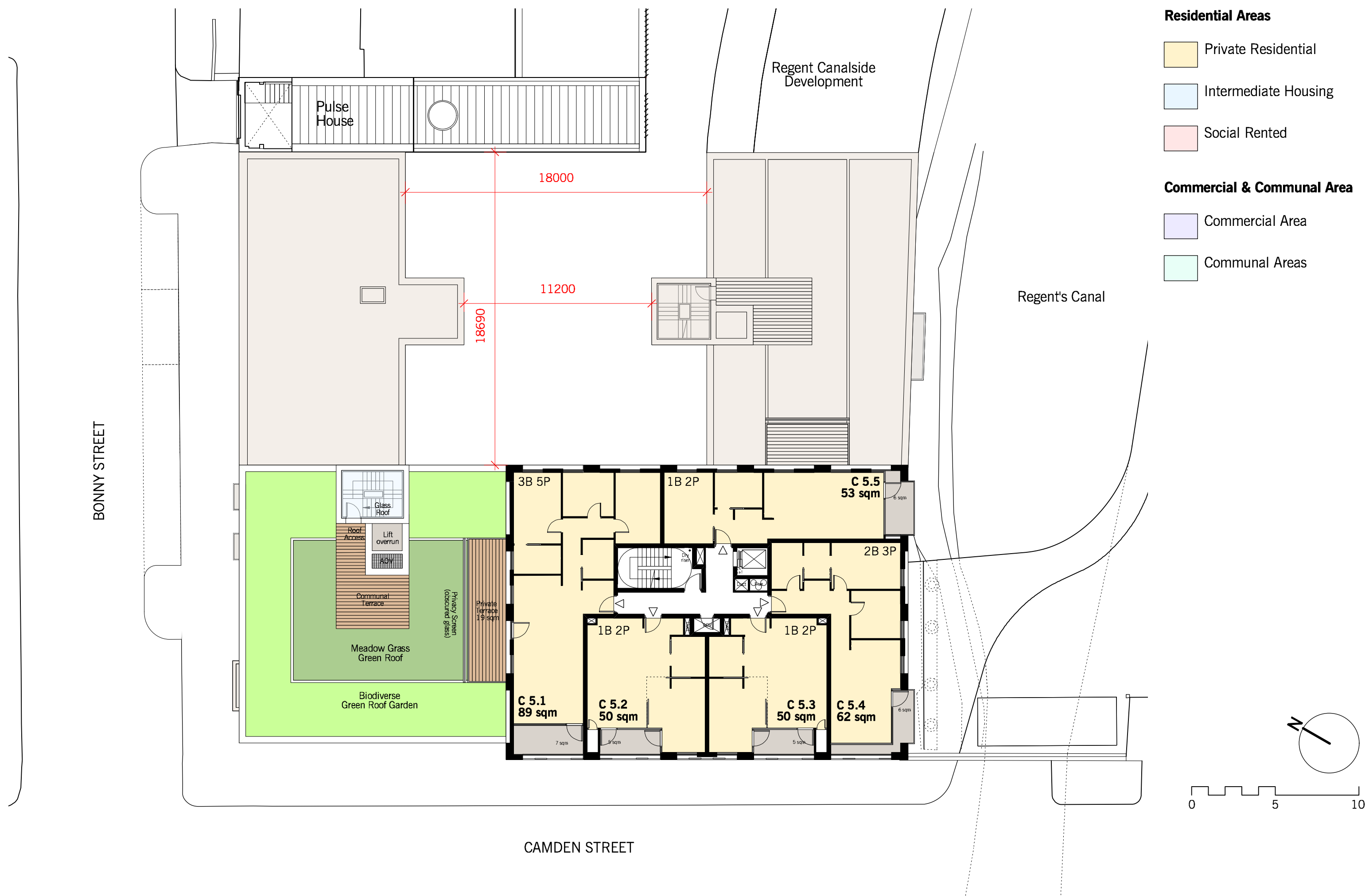
- Residential Areas**
- Private Residential
  - Intermediate Housing
  - Social Rented
- Commercial & Communal Area**
- Commercial Area
  - Communal Areas

BONNY STREET

CAMDEN STREET

Regent Canalside Development

Regent's Canal



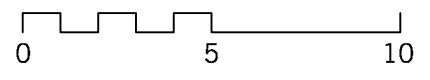
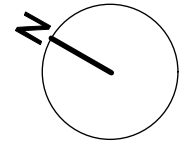
- Residential Areas**
- Private Residential
  - Intermediate Housing
  - Social Rented
- Commercial & Communal Area**
- Commercial Area
  - Communal Areas

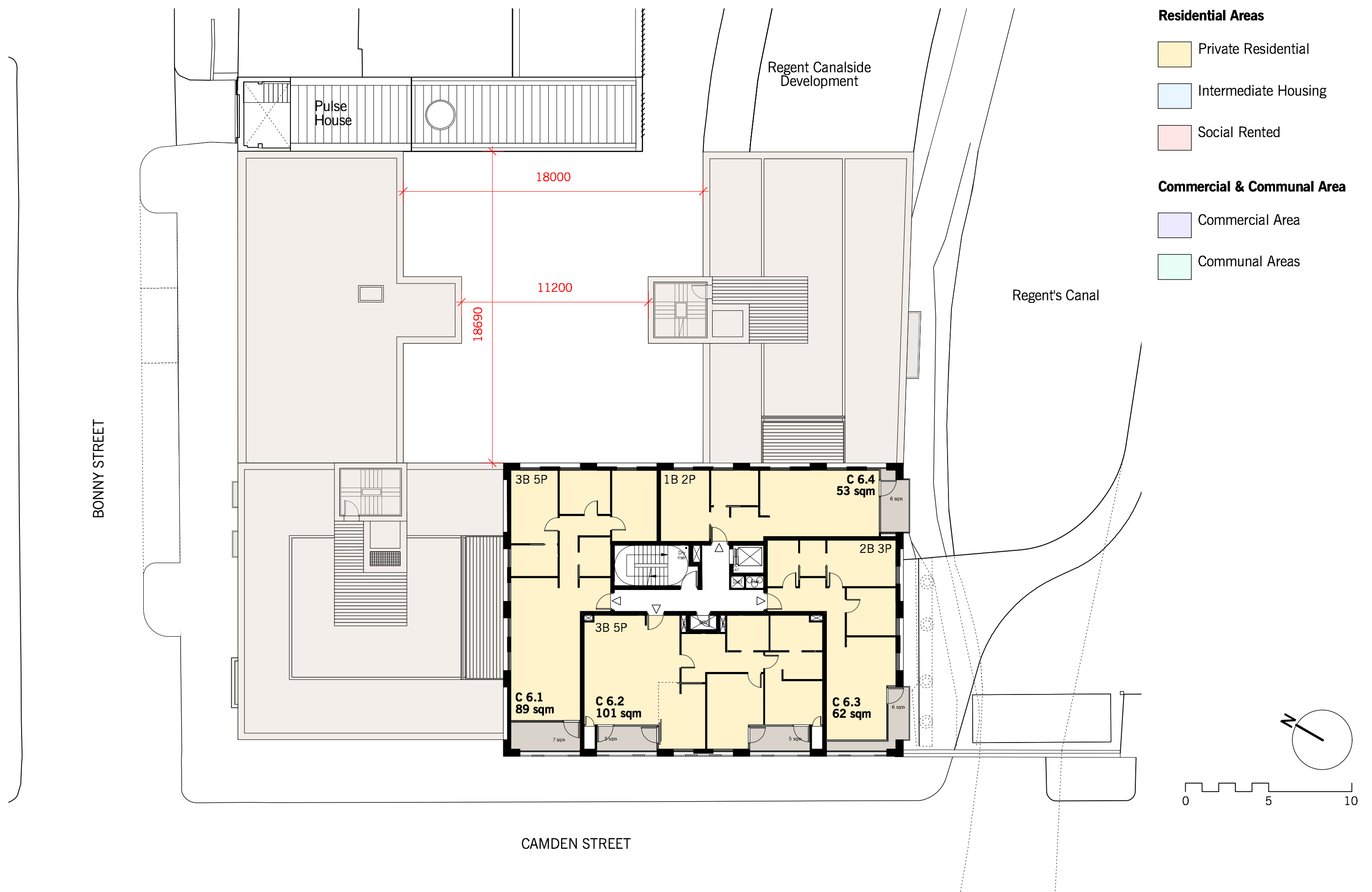
BONNY STREET

Regent Canalside Development

Regent's Canal

CAMDEN STREET





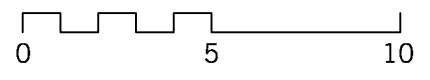
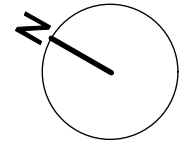
- Residential Areas**
- Private Residential
  - Intermediate Housing
  - Social Rented
- Commercial & Communal Area**
- Commercial Area
  - Communal Areas

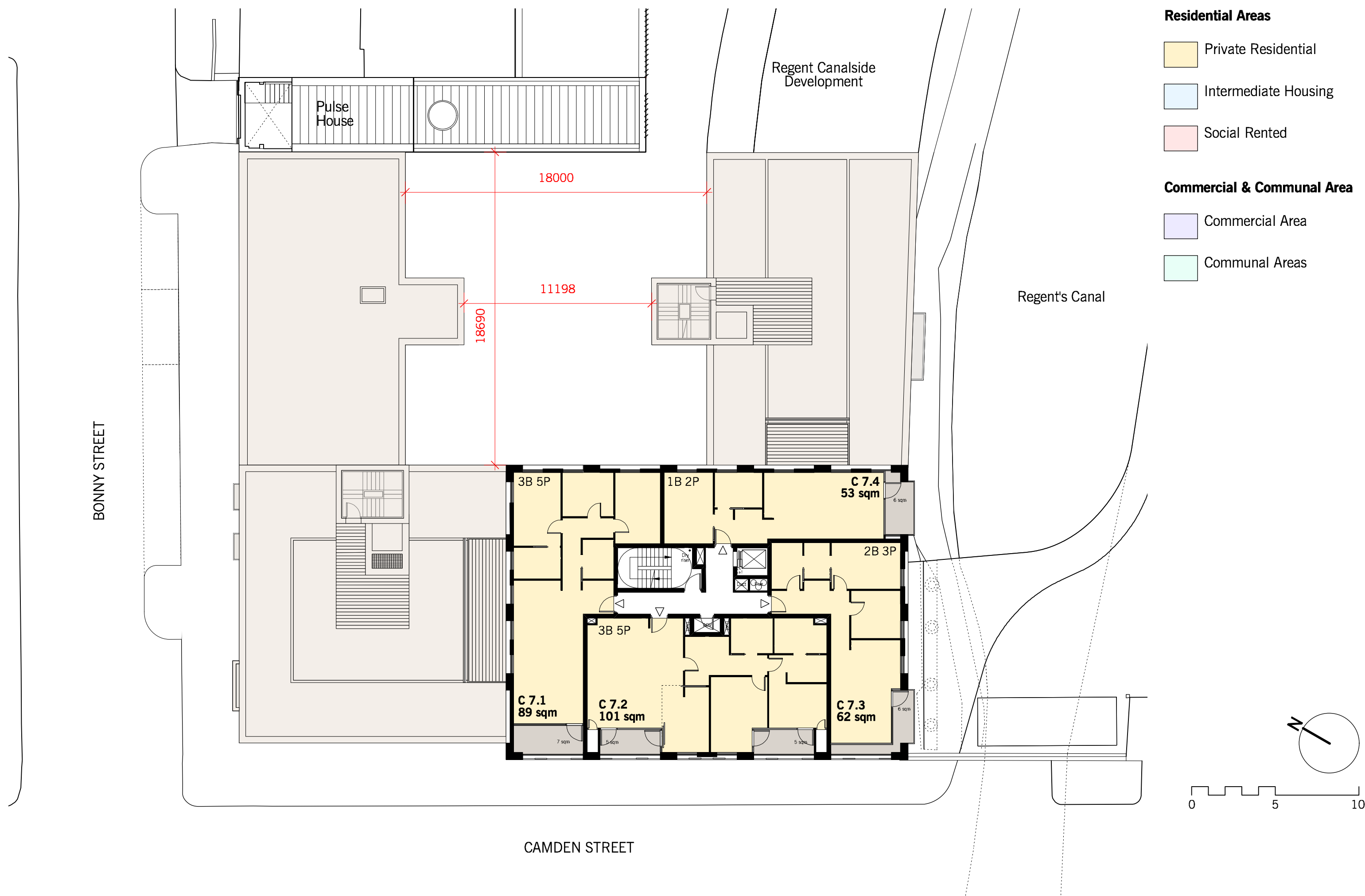
BONNY STREET

Regent Canalside Development

Regent's Canal

CAMDEN STREET





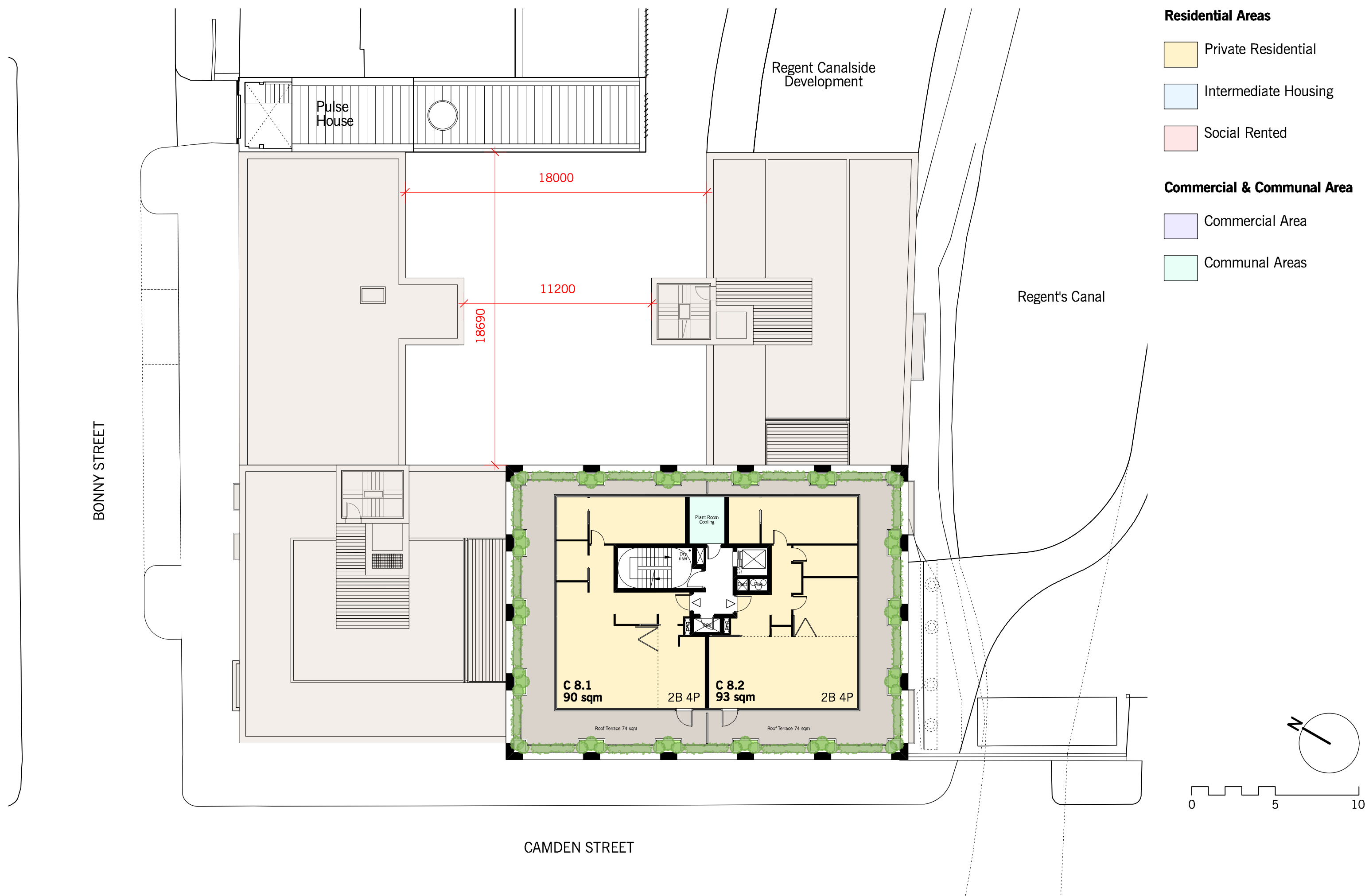
- Residential Areas**
- Private Residential
  - Intermediate Housing
  - Social Rented
- Commercial & Communal Area**
- Commercial Area
  - Communal Areas

BONNY STREET

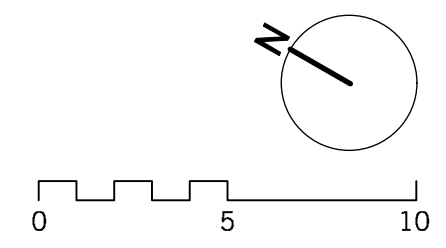
Regent Canalside Development

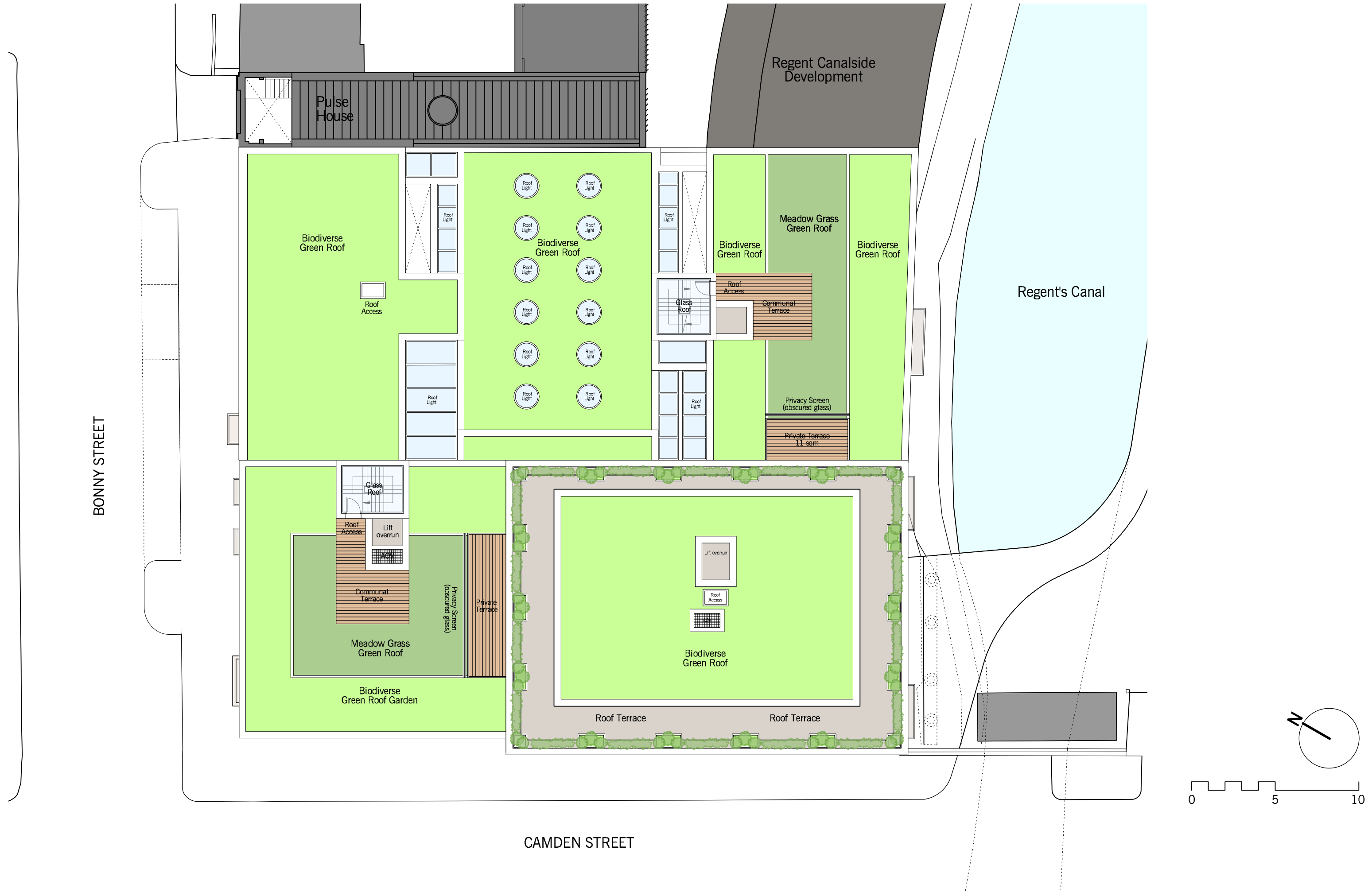
Regent's Canal

CAMDEN STREET



- Residential Areas**
- Private Residential
  - Intermediate Housing
  - Social Rented
- Commercial & Communal Area**
- Commercial Area
  - Communal Areas





BONNY STREET

CAMDEN STREET

Regent Canalside Development

Regent's Canal

Pulse House

Biodiverse Green Roof

Biodiverse Green Roof

Meadow Grass Green Roof

Biodiverse Green Roof

Biodiverse Green Roof

Roof Access

Roof Light

Roof Light

Roof Light

Roof Light

Roof Light

Roof Light

Roof Light

Roof Light

Roof Light

Roof Light

Roof Light

Roof Light

Roof Light

Roof Light

Glass Roof

Roof Access

Communal Terrace

Privacy Screen (obscured glass)

Private Terrace 11 sqm

Glass Roof

Roof Access

Lift overrun

Communal Terrace

Privacy Screen (obscured glass)

Private Terrace

Meadow Grass Green Roof

Biodiverse Green Roof Garden

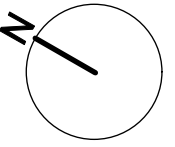
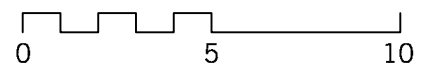
Lift overrun

Roof Access

Biodiverse Green Roof

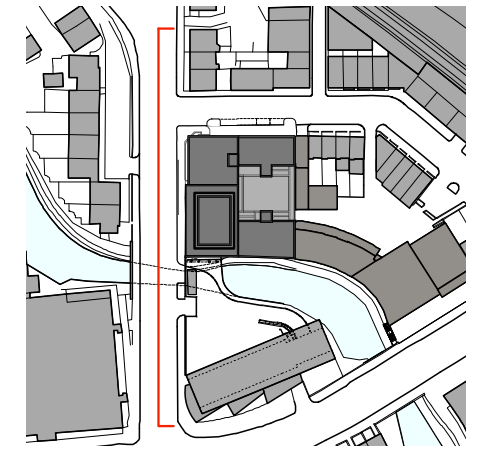
Roof Terrace

Roof Terrace

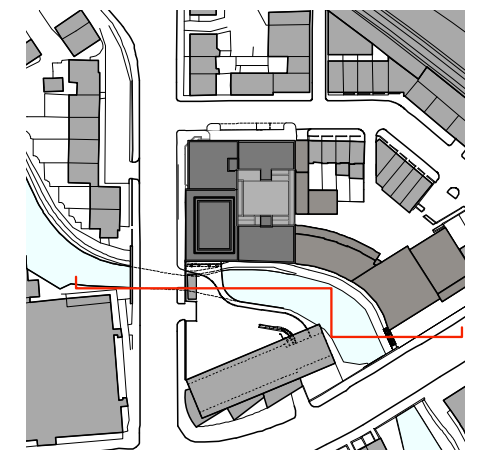




**Proposed West Elevation - Camden Street View**

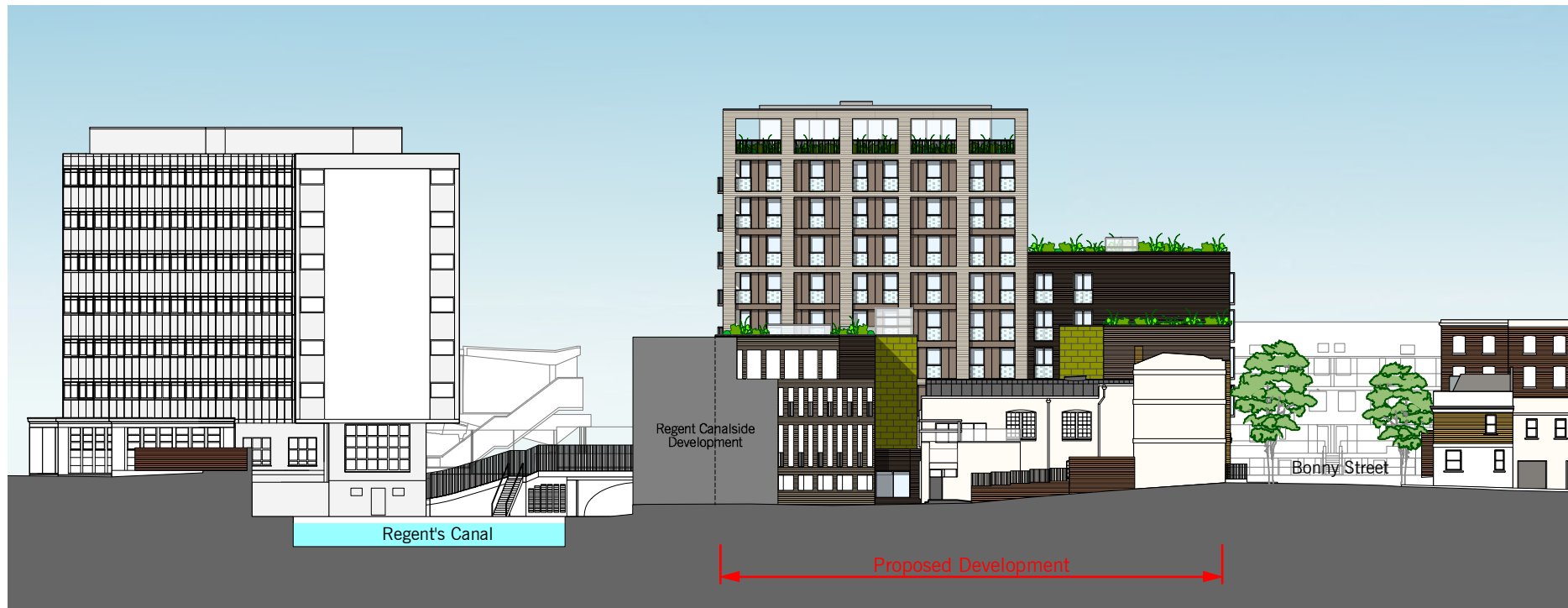


**Proposed South Elevation - Canal View**

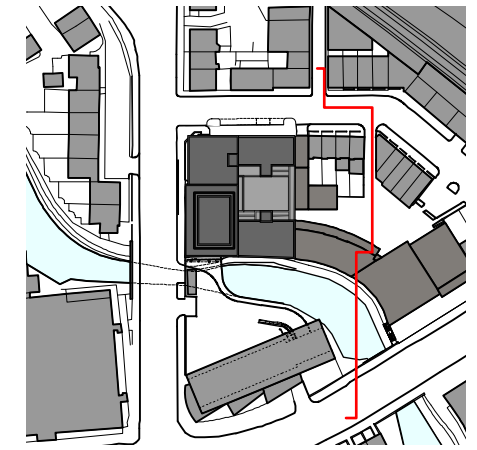


0 5 10 15 20m

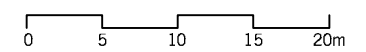
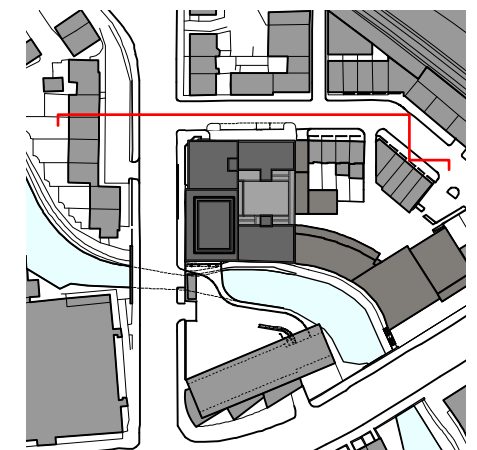


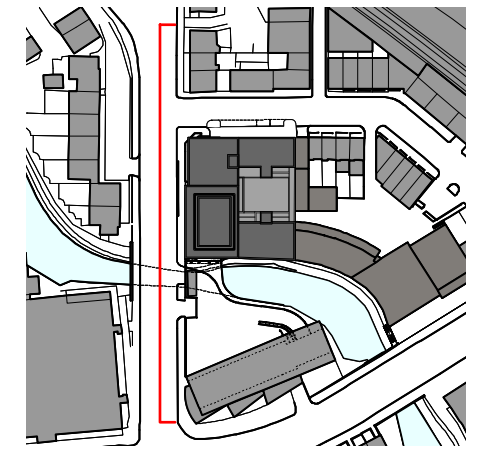


Proposed East Elevation - Twyman House View



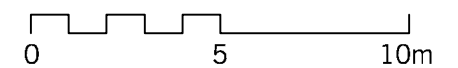
Proposed North Elevation - Bonny Street View



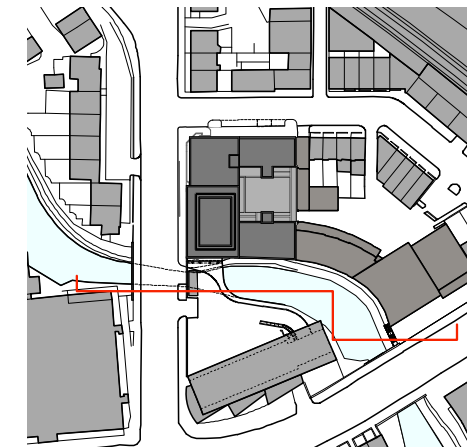


Materials:

- 1) Brick façade
- 2) Glazed terracotta panels
- 3) Rendered façade with external wall insulation system
- 4) Powder coated composite windows
- 5) Fully glazed bay windows
- 6) Glazed curtain wall for offices
- 7) Translucent glass balustrade
- 8) Metal railing balustrade
- 9) Glazed roof access
- 10) Lift overrun with render finish
- 11) Glass door (residential entrance)
- 12) Glazed double door (office entrance)
- 13) Glazed roof access
- 14) Metal facade cladding
- 15) Sliding metal screens
- 16) Biodiverse Green Roof



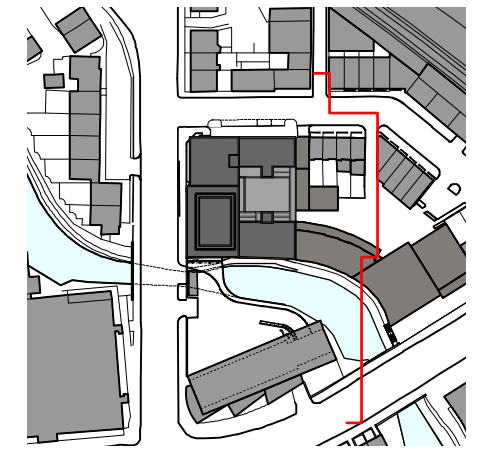
Proposed West Elevation  
(Camden Street View)



Materials:

- 1) Brick façade
- 2) Glazed terracotta panels
- 3) Rendered façade with external wall insulation system
- 4) Powder coated composite windows
- 5) Fully glazed bay windows
- 6) Glazed curtain wall for offices
- 7) Translucent glass balustrade
- 8) Metal railing balustrade
- 9) Glazed roof access
- 10) Lift overrun with render finish
- 11) Glass door (residential entrance)
- 12) Glazed double door (office entrance)
- 13) Glazed roof access
- 14) Metal facade cladding
- 15) Sliding metal screens
- 16) Biodiverse Green Roof

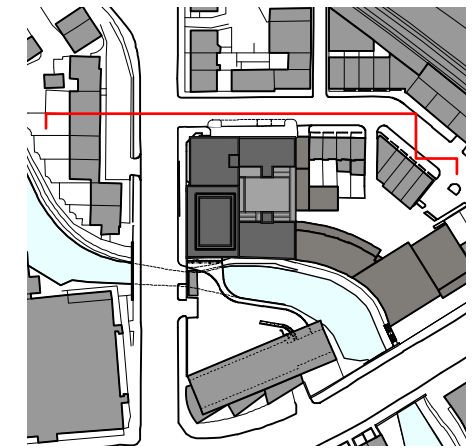
**Proposed South Elevation**  
(Canal View)



Materials:

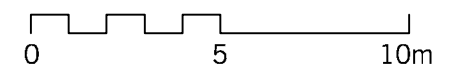
- 1) Brick façade
- 2) Glazed terracotta panels
- 3) Rendered façade with external wall insulation system
- 4) Powder coated composite windows
- 5) Fully glazed bay windows
- 6) Glazed curtain wall for offices
- 7) Translucent glass balustrade
- 8) Metal railing balustrade
- 9) Glazed roof access
- 10) Lift overrun with render finish
- 11) Glass door (residential entrance)
- 12) Glazed double door (office entrance)
- 13) Glazed roof access
- 14) Metal facade cladding
- 15) Sliding metal screens
- 16) Biodiverse Green Roof

Proposed East Elevation  
(Regent Canalside View)

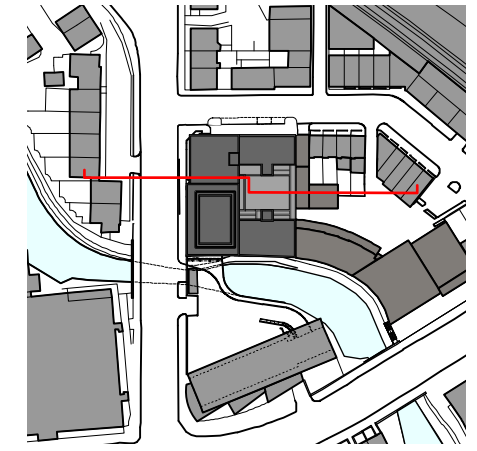
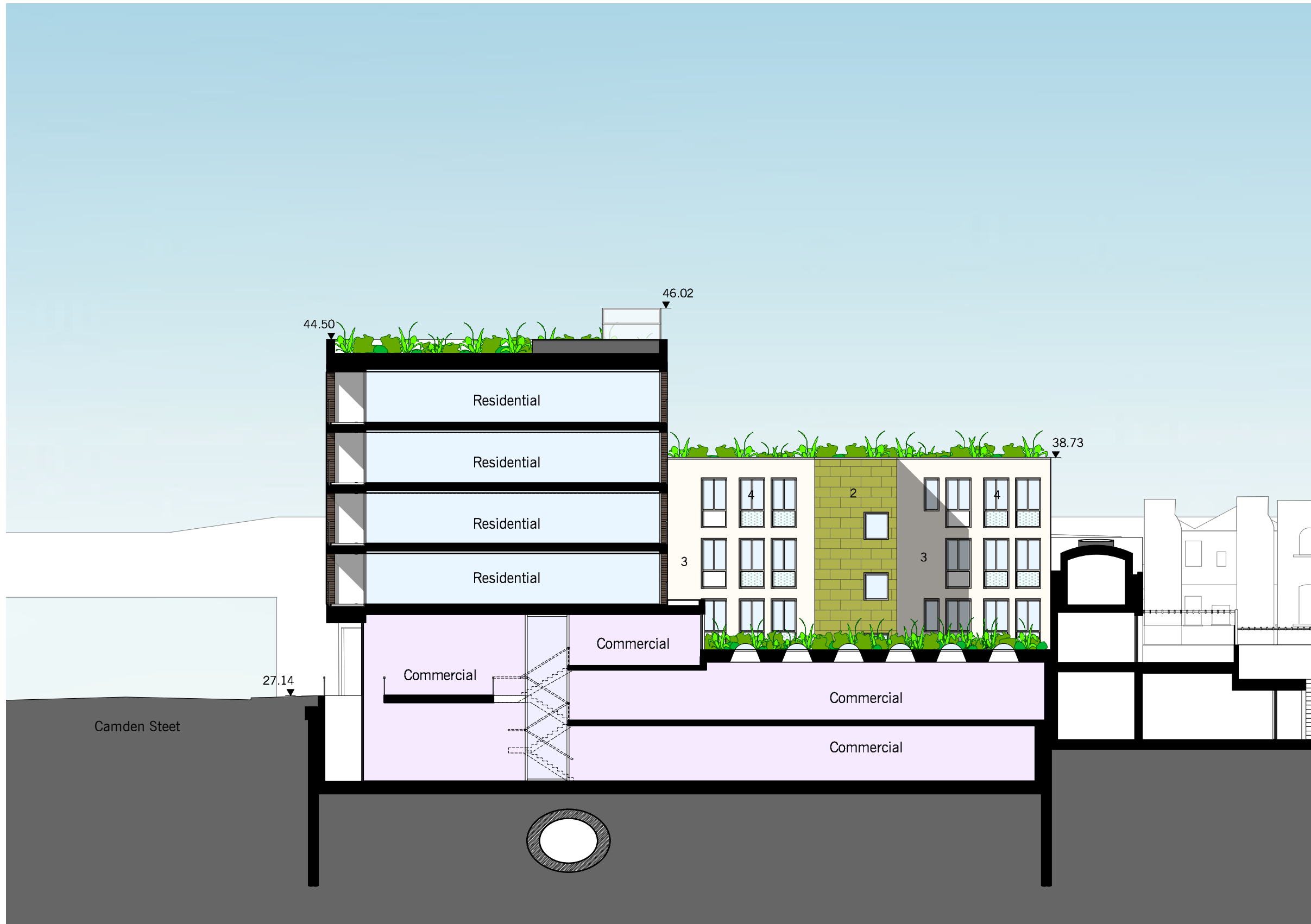


Materials:

- 1) Brick façade
- 2) Glazed terracotta panels
- 3) Rendered façade with external wall insulation system
- 4) Powder coated composite windows
- 5) Fully glazed bay windows
- 6) Glazed curtain wall for offices
- 7) Translucent glass balustrade
- 8) Metal railing balustrade
- 9) Glazed roof access
- 10) Lift overrun with render finish
- 11) Glass door (residential entrance)
- 12) Glazed double door (office entrance)
- 13) Glazed roof access
- 14) Metal facade cladding
- 15) Sliding metal screens
- 16) Biodiverse Green Roof



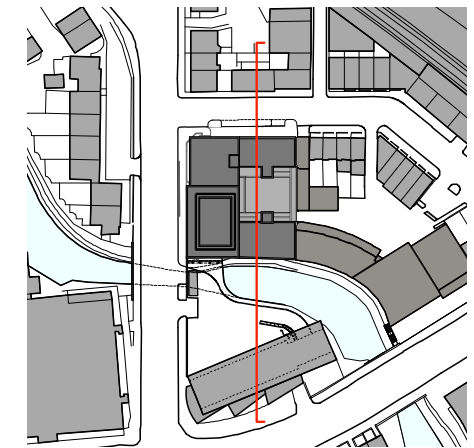
Proposed North Elevation  
(Bonny Street View)



Materials:

- 1) Brick façade
- 2) Glazed terracotta panels
- 3) Rendered façade with external wall insulation system
- 4) Powder coated composite windows
- 5) Fully glazed bay windows
- 6) Glazed curtain wall for offices
- 7) Translucent glass balustrade
- 8) Metal railing balustrade
- 9) Glazed roof access
- 10) Lift overrun with render finish
- 11) Glass door (residential entrance)
- 12) Glazed double door (office entrance)
- 13) Glazed roof access
- 14) Metal facade cladding
- 15) Sliding metal screens
- 16) Biodiverse Green Roof

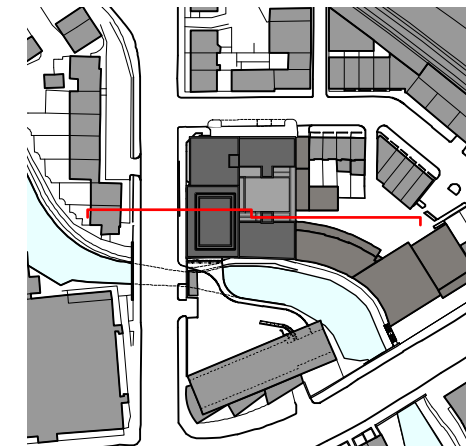
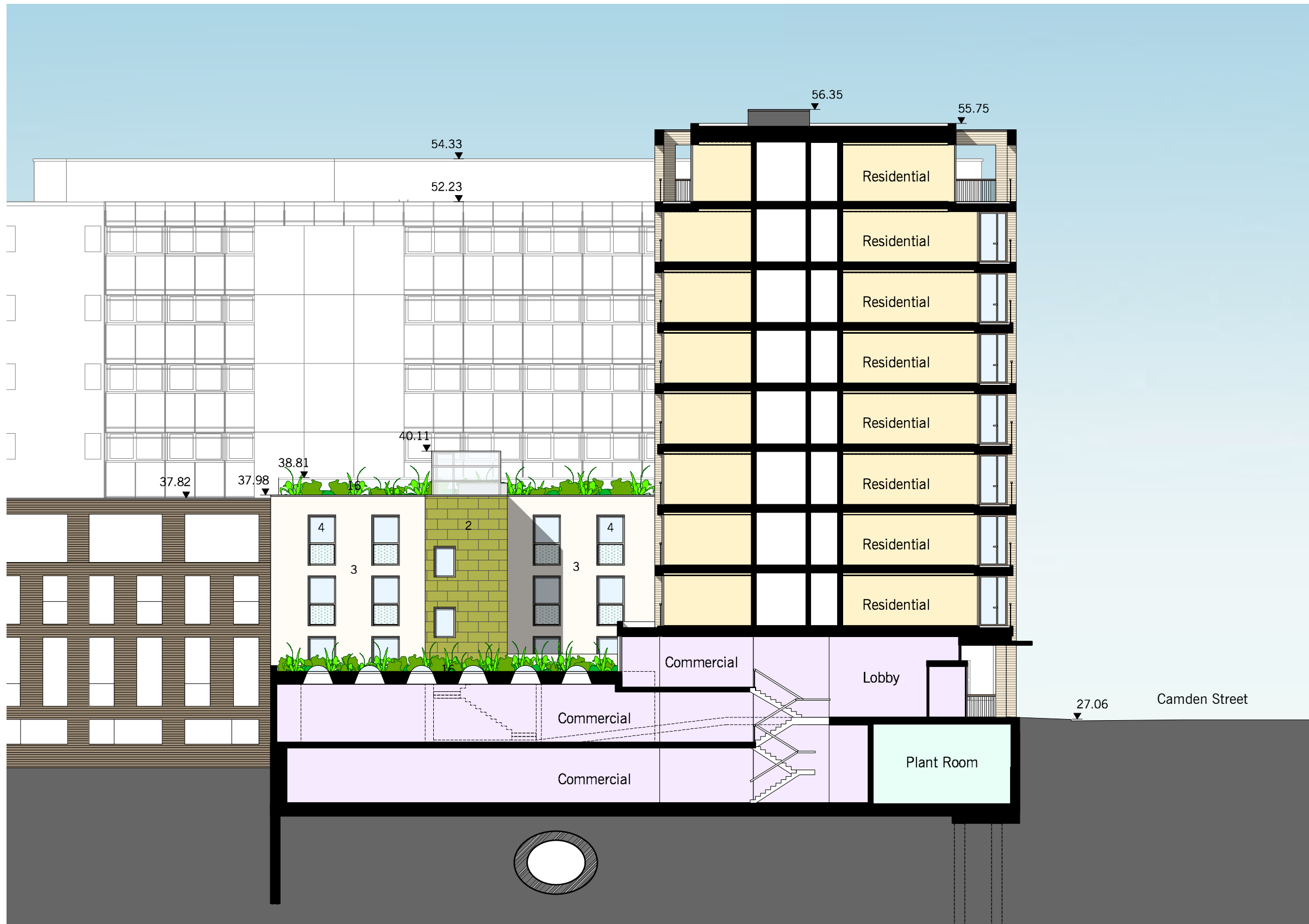
Proposed Section AA



Materials:

- 1) Brick façade
- 2) Glazed terracotta panels
- 3) Rendered façade with external wall insulation system
- 4) Powder coated composite windows
- 5) Fully glazed bay windows
- 6) Glazed curtain wall for offices
- 7) Translucent glass balustrade
- 8) Metal railing balustrade
- 9) Glazed roof access
- 10) Lift overrun with render finish
- 11) Glass door (residential entrance)
- 12) Glazed double door (office entrance)
- 13) Glazed roof access
- 14) Metal facade cladding
- 15) Sliding metal screens
- 16) Biodiverse Green Roof

Proposed Section BB

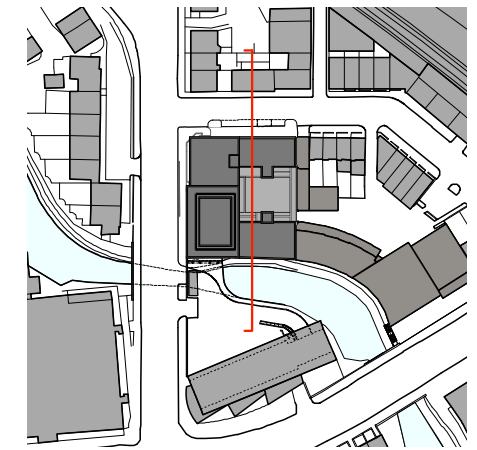


Materials:

- 1) Brick façade
- 2) Glazed terracotta panels
- 3) Rendered façade with external wall insulation system
- 4) Powder coated composite windows
- 5) Fully glazed bay windows
- 6) Glazed curtain wall for offices
- 7) Translucent glass balustrade
- 8) Metal railing balustrade
- 9) Glazed roof access
- 10) Lift overrun with render finish
- 11) Glass door (residential entrance)
- 12) Glazed double door (office entrance)
- 13) Glazed roof access
- 14) Metal facade cladding
- 15) Sliding metal screens
- 16) Biodiverse Green Roof

Proposed Section CC





Materials:

- 1) Brick façade
- 2) Glazed terracotta panels
- 3) Rendered façade with external wall insulation system
- 4) Powder coated composite windows
- 5) Fully glazed bay windows
- 6) Glazed curtain wall for offices
- 7) Translucent glass balustrade
- 8) Metal railing balustrade
- 9) Glazed roof access
- 10) Lift overrun with render finish
- 11) Glass door (residential entrance)
- 12) Glazed double door (office entrance)
- 13) Glazed roof access
- 14) Metal facade cladding
- 15) Sliding metal screens
- 16) Biodiverse Green Roof

Proposed Section DD