



Proposals for Mixed Use Regeneration

**140-146 Camden Street
London NW1 9PF**

Planning Application

Waste Storage & Collection Strategy

July 2014

Residential Waste Storage & Collection

This document set out the waste storage and collection strategy for the development.

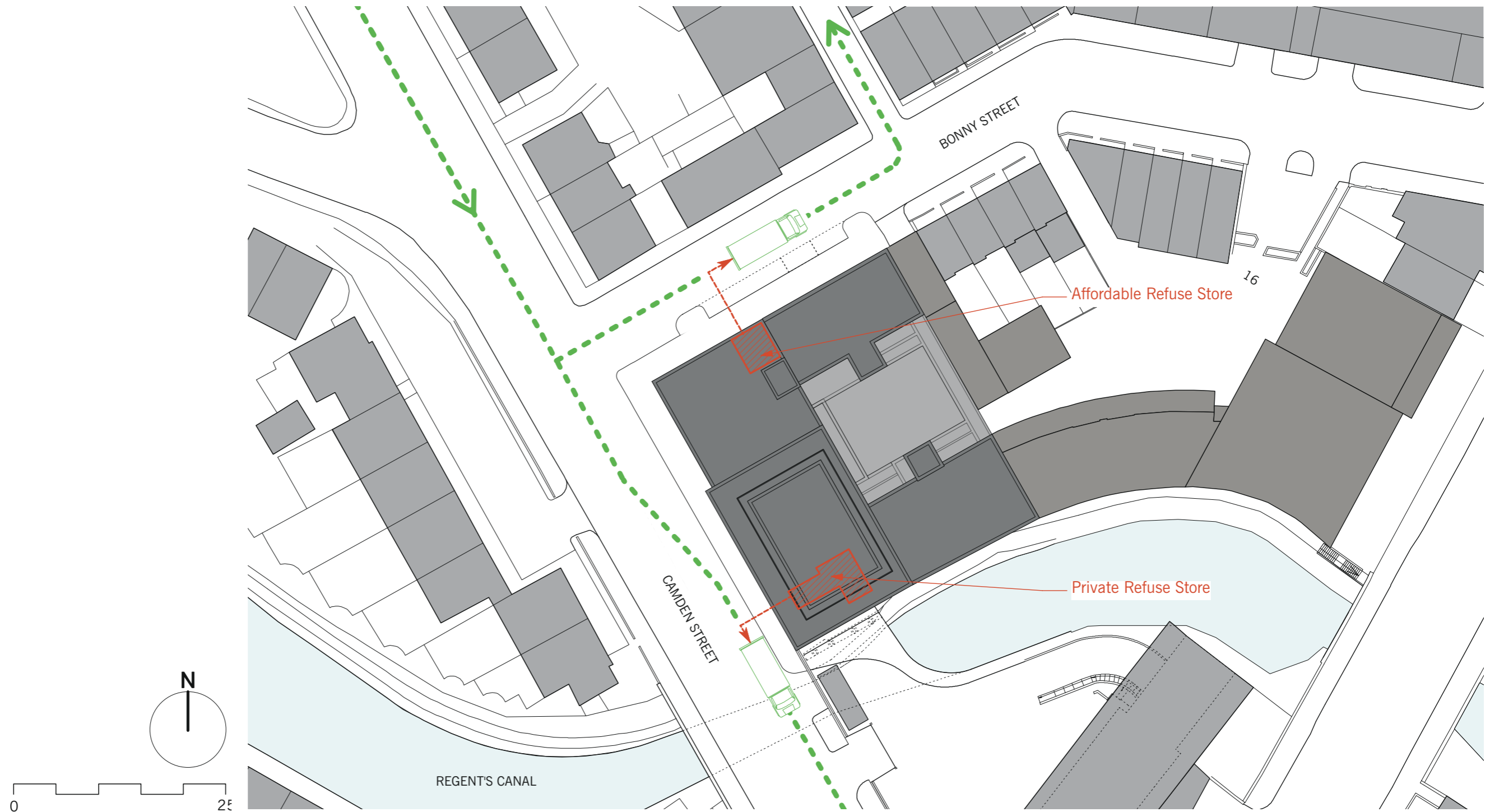
Residential

Apartments to share waste containers in two separate refuse storage rooms each to be shared by Block A and B and Block C and D at ground level within 30m travel of apartments and within 25m travel from the collection vehicle position in the street. Controlled access from the street to each refuse store will be provided.

Refuse and Recycling storage to be provided in accordance with the Camden Council's requirements. The storage rooms would be ventilated and provided with a solid flush door, ceramic tiled floor with provision for washing down.

Waste produced by commercial and apartments will be stored separately. The design of the residential waste storage complies with the Core Strategy CS18, Development Plan Policy DP26, Development Plan Policy DP22 and Camden Planning Guidance CPG1 Design.

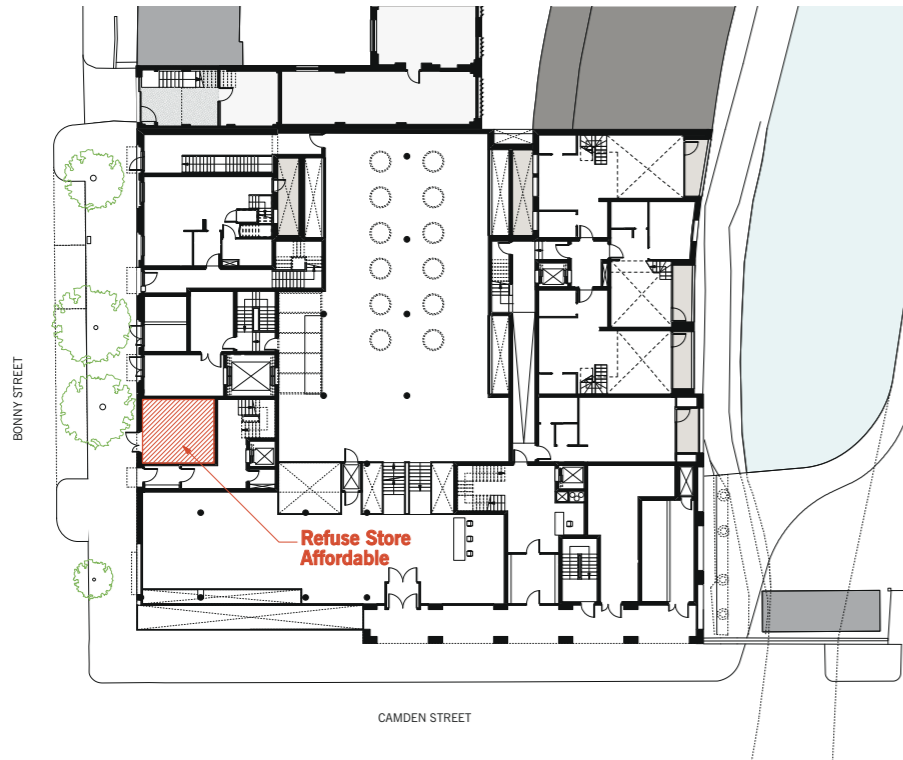
Waste Collection - Residential Refuse Vehicle Access



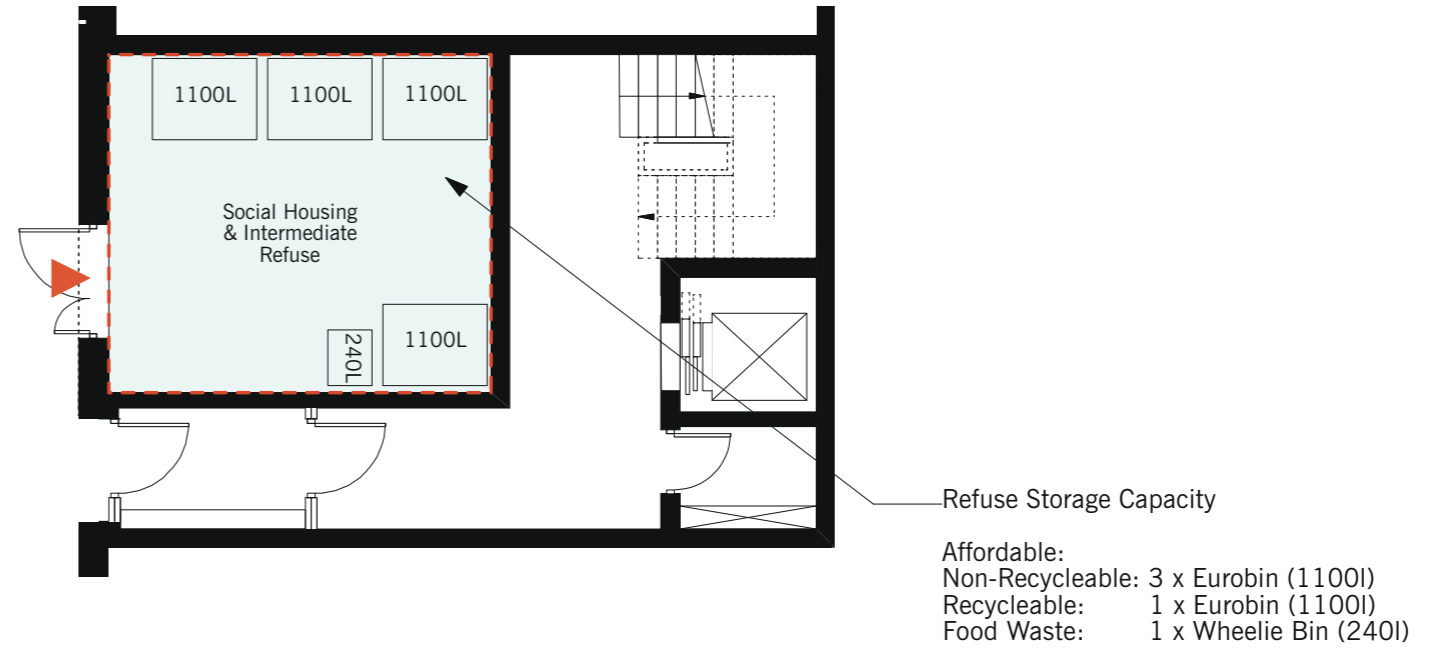
Site Plan - Refuse Vehicle Access

Waste Storage - Affordable Refuse Store

Affordable Refuse Store
Location in ground floor plan



Affordable Refuse Store
Ground Floor Plan



External Refuse Store Capacity

Affordable Housing

Total Capacity Required (according to CPG1)

Flat Type	No.	Required Capacities (External Refuse Space)	
1 bedroom (2 habitable rooms)	3	0.20 m ³	Total 1 bedrooms: 0.60 m ³
2 bedroom (3 habitable rooms)	7	0.25 m ³	Total 2 bedrooms: 1.75 m ³
3 bedroom (4 habitable rooms)	4	0.30 m ³	Total 3 bedrooms: 1.20 m ³

Total Capacity Required :

Collection 1x per week	3.55 m ³
	3,550 ltr

2/3 Non-recyclable	2,367 ltr
1/3 Recyclable	1,183 ltr

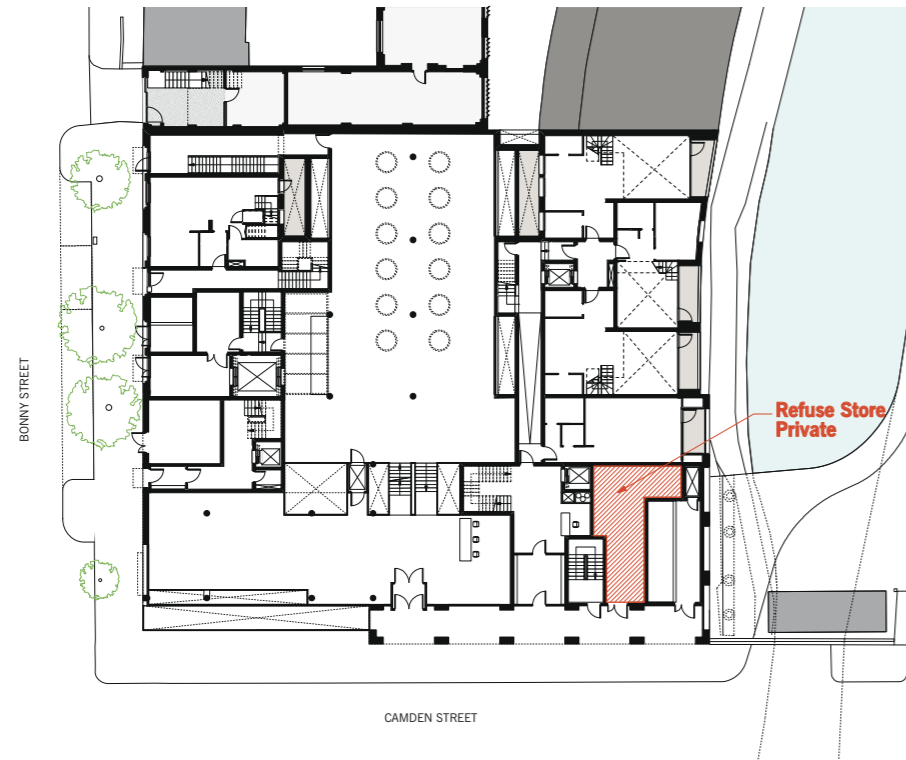
Total Capacity Provided

Type of Waste	No.	Bin Size	Type of Bin	Totals
Non-Recyclable	3	1100 ltr	Eurobin	3300 ltr
Recyclable	1	1100 ltr	Eurobin	1100 ltr
Food Waste	1	240 ltr	Wheelie Bin	240 ltr

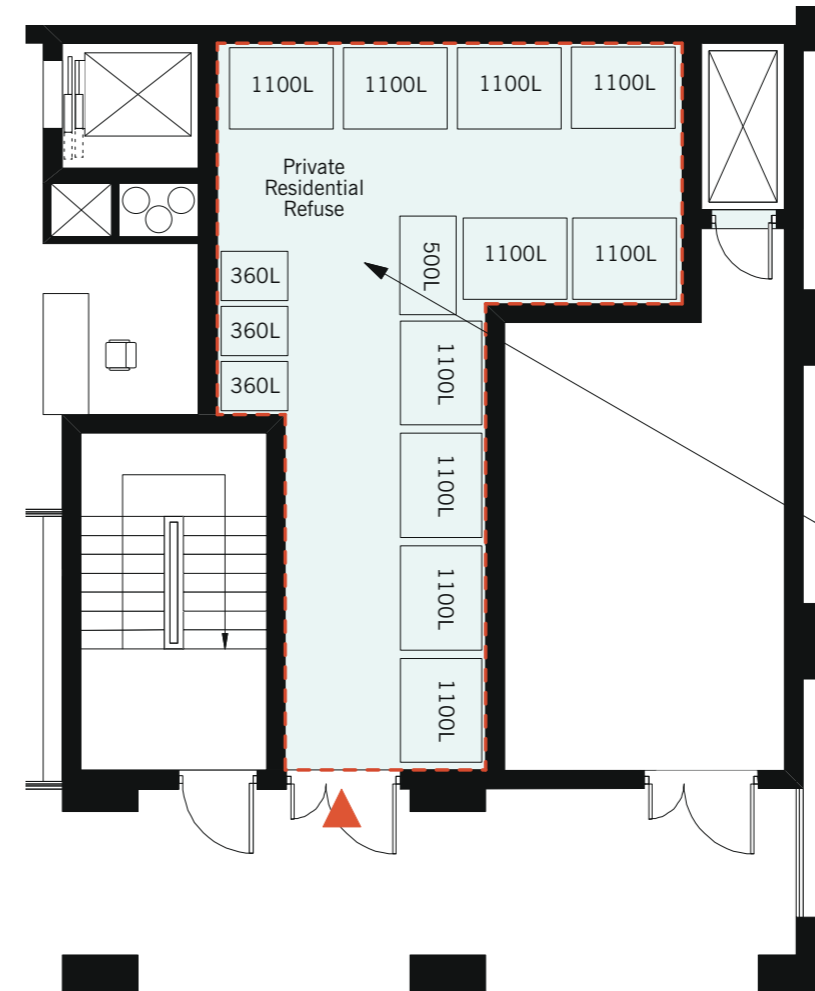
Total Capacity Provided: 4,640 ltr

Waste Storage - Private Residential Refuse Store

Private Residential Refuse Store
Location in ground floor plan



Private Residential Refuse Store
Ground Floor Plan



Refuse Storage Capacity:

- Non-Recyclable: 8 x Eurobin (1100l)
- Recyclable: 2 x Eurobin (1100l)
- Recyclable: 3 x Wheelie Bin (360l)
- Food Waste: 1 x Eurobin (500l)

External Refuse Store Capacity

Private

Total Capacity Required (according to CPG1)

Flat Type	No.	Required Capacities (External Refuse Space)	
1 bedroom (1 habitable rooms)	1	0.15 m ³	Total 1 bedrooms: 0.15 m ³
1 bedroom (2 habitable rooms)	17	0.20 m ³	Total 1 bedrooms: 3.40 m ³
2 bedroom (3 habitable rooms)	24	0.25 m ³	Total 2 bedrooms: 6.00 m ³
3 bedroom (4 habitable rooms)	6	0.30 m ³	Total 3 bedrooms: 1.80 m ³

Collection 1x per week	11.35 m ³
	11,350 ltr

2/3 Non-recyclable	7,567 ltr
1/3 Recyclable	3,783 ltr

Total Capacity Provided

Type of Waste	No.	Bin Size	Type of Bin	Totals
Non-Recyclable	8	1100 ltr	Eurobin	8800 ltr
Recyclable	2	1100 ltr	Eurobin	2200 ltr
Recyclable	3	360 ltr	Wheelie Bin	1080 ltr
Food Waste	1	500 ltr	Eurobin	500 ltr

Total Capacity Provided: 12,580 ltr

Commercial Waste Storage & Collection

Commercial

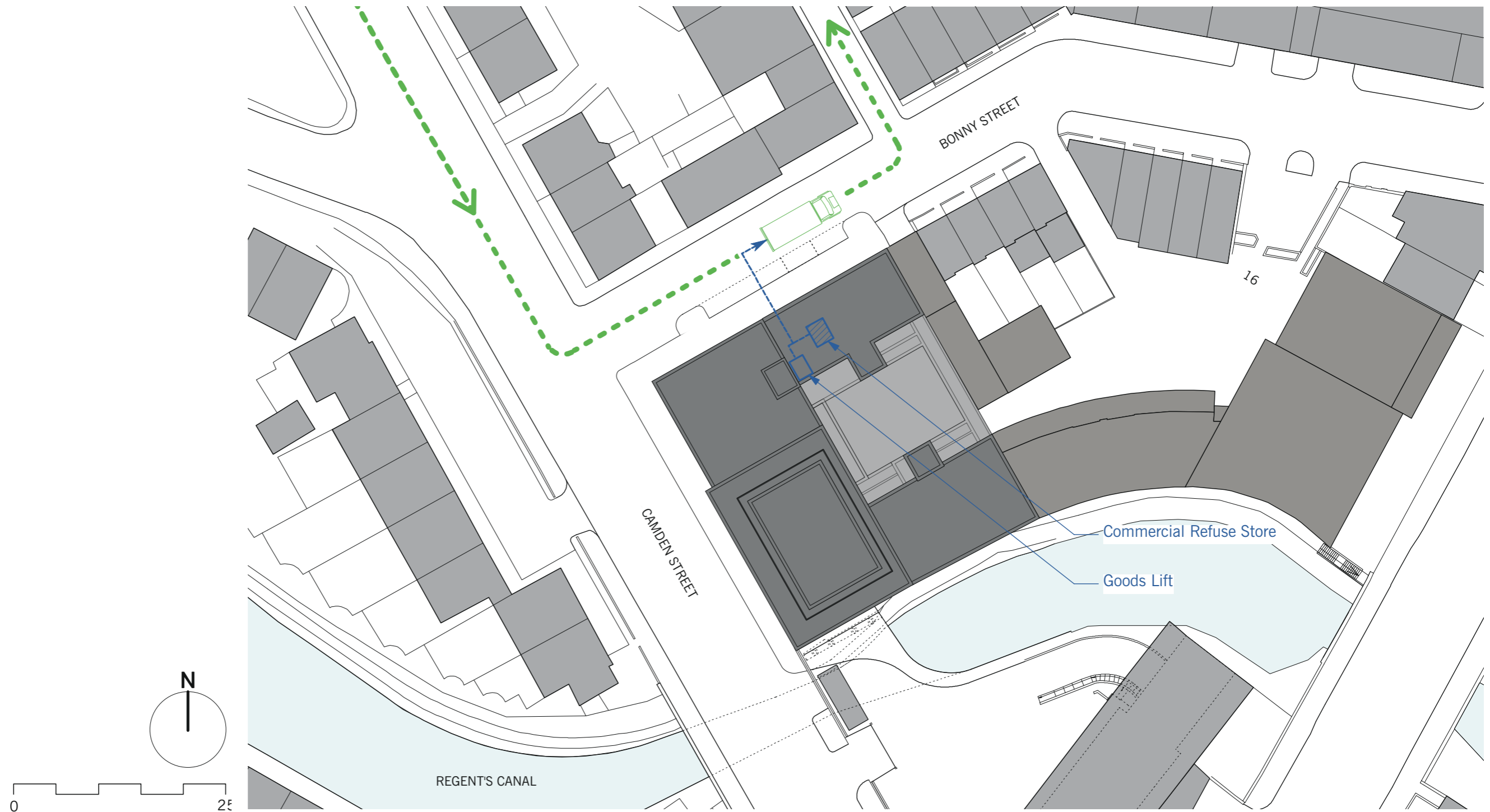
Two refuse stores are proposed for the In the commercial area, one for each level at Lower Ground and Ground Floor. The waste bins at Lower Ground Floor can be moved to street level via a suitable goods lift and temporarily stored in a holding area for collection.

The volume of waste generated and thus the number and type of containers that a commercial development requires is ultimately dependent on the use of the premise and the type of occupier.

Commercial waste collection to be collected as frequently as agreed with Camden Council or private contractor. The storage rooms would be ventilated and provided with a solid flush door, ceramic tiled floor with provision for washing down.

Waste produced by commercial and apartments will be stored separately. The design of the commercial waste storage complies with the Core Strategy CS18, Development Plan Policy DP26, Development Plan Policy DP22 and Camden Planning Guidance CPG1 Design.

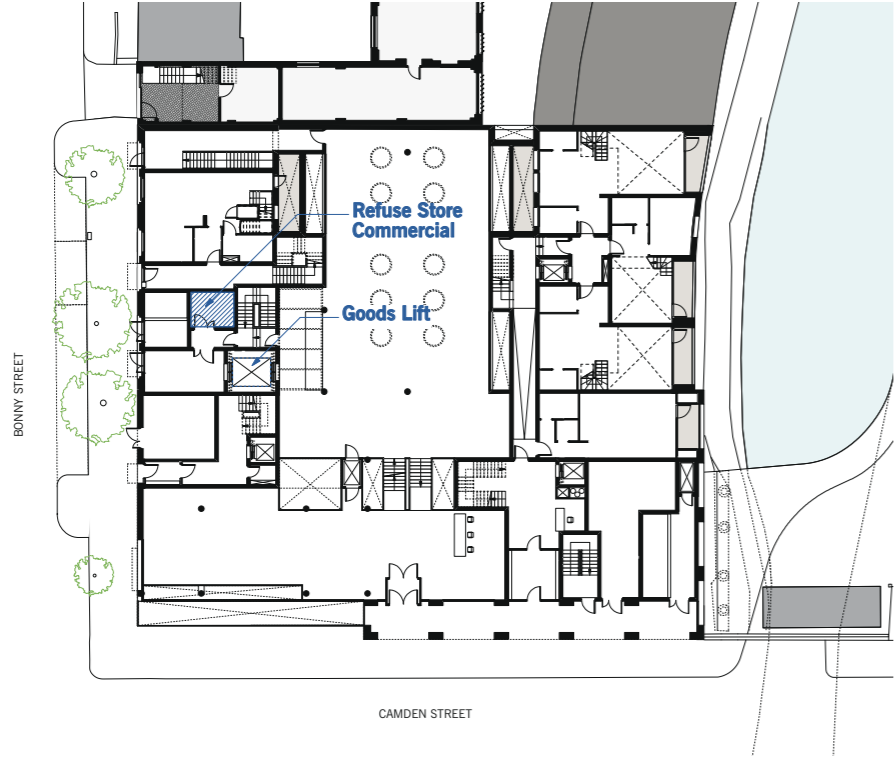
Waste Collection - Commercial Refuse Vehicle Access



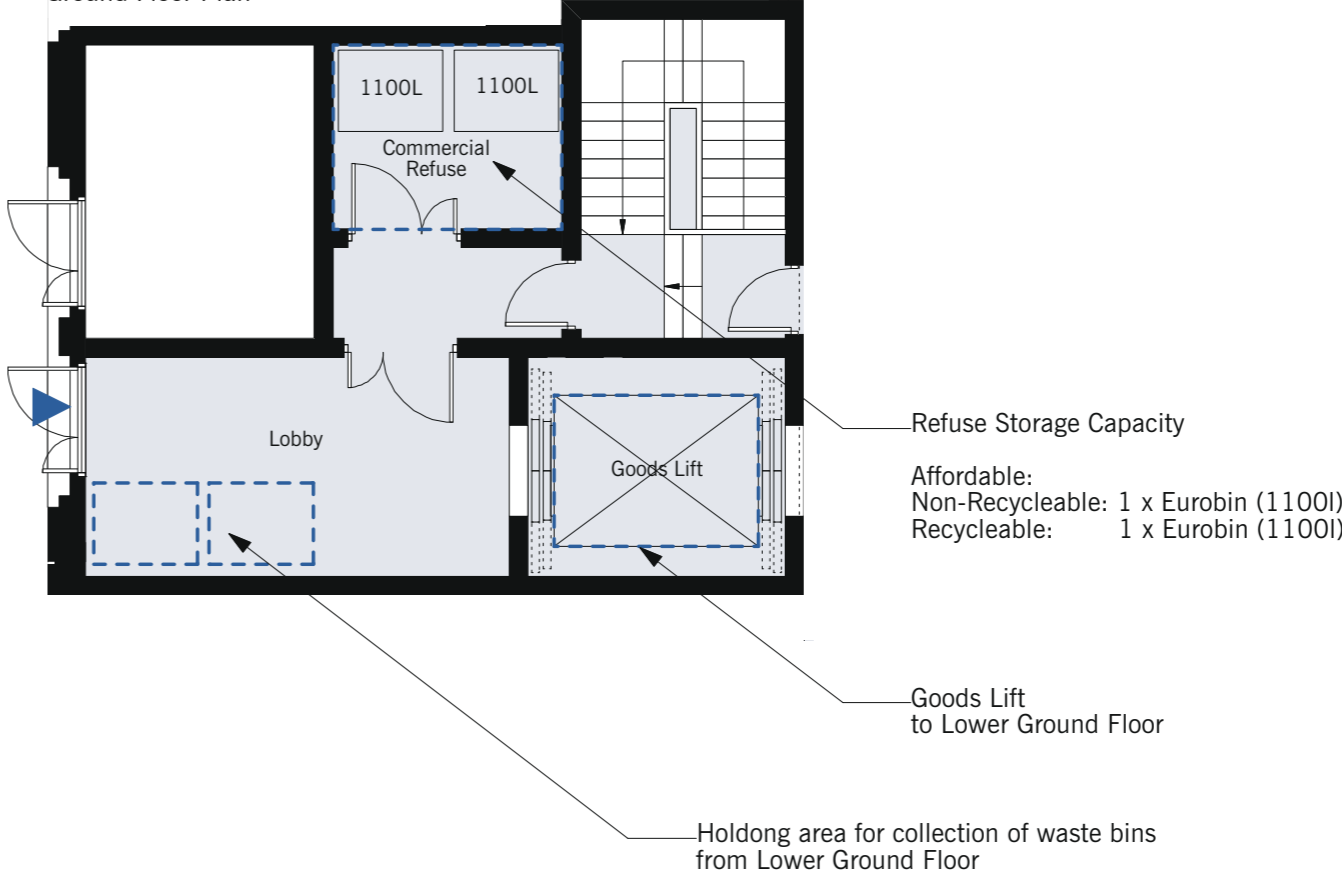
Site Plan - Refuse Vehicle Access

Waste Storage - Commercial Refuse Store

Commercial Refuse Store & Goods Lift
Location in ground floor plan



Commercial Refuse Store
Ground Floor Plan



Commercial Refuse Store
Lower Ground Floor Plan

