

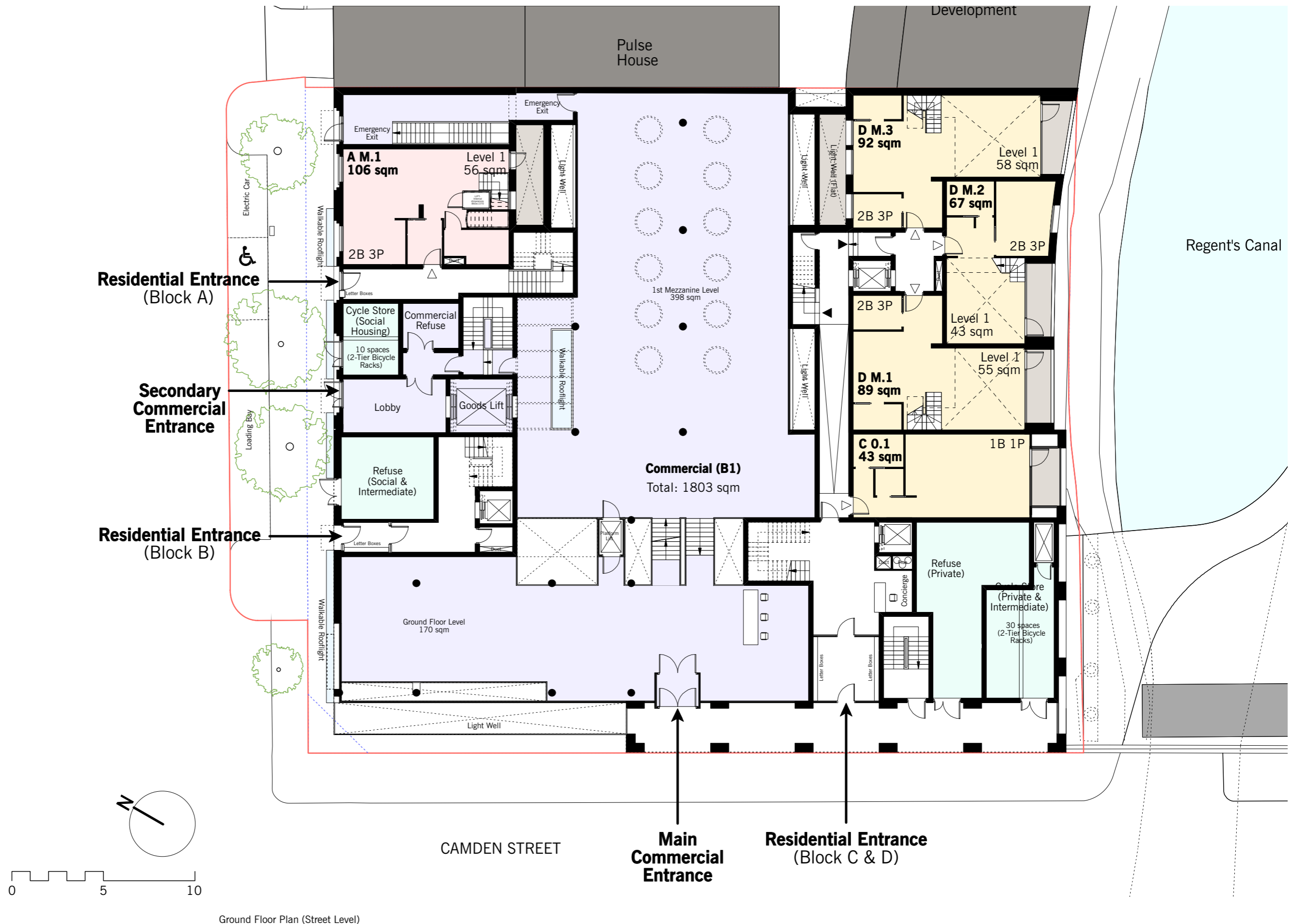
## Access & Parking

Site Access



Site Plan

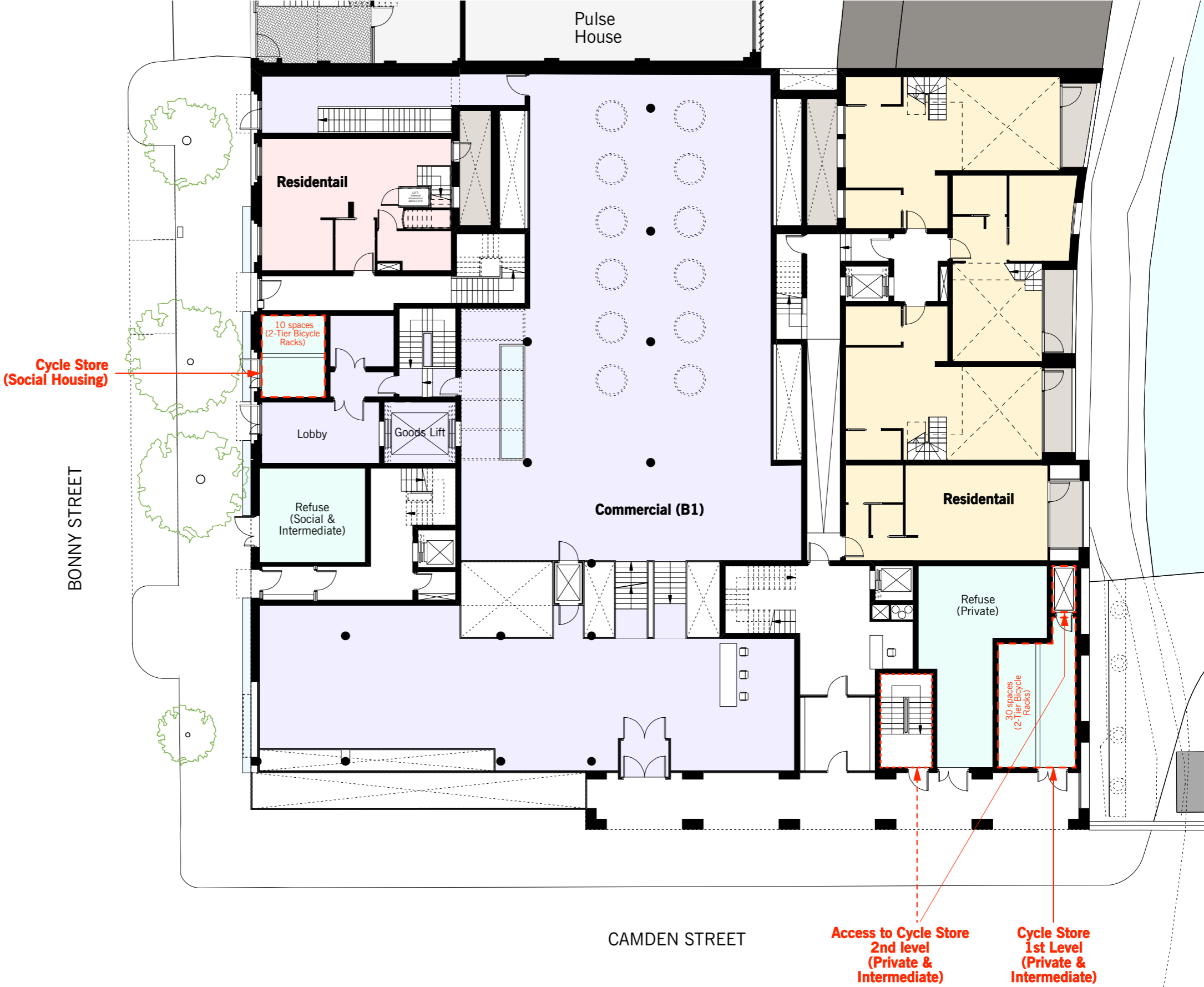
# Building Access



Ground Floor Plan (Street Level)

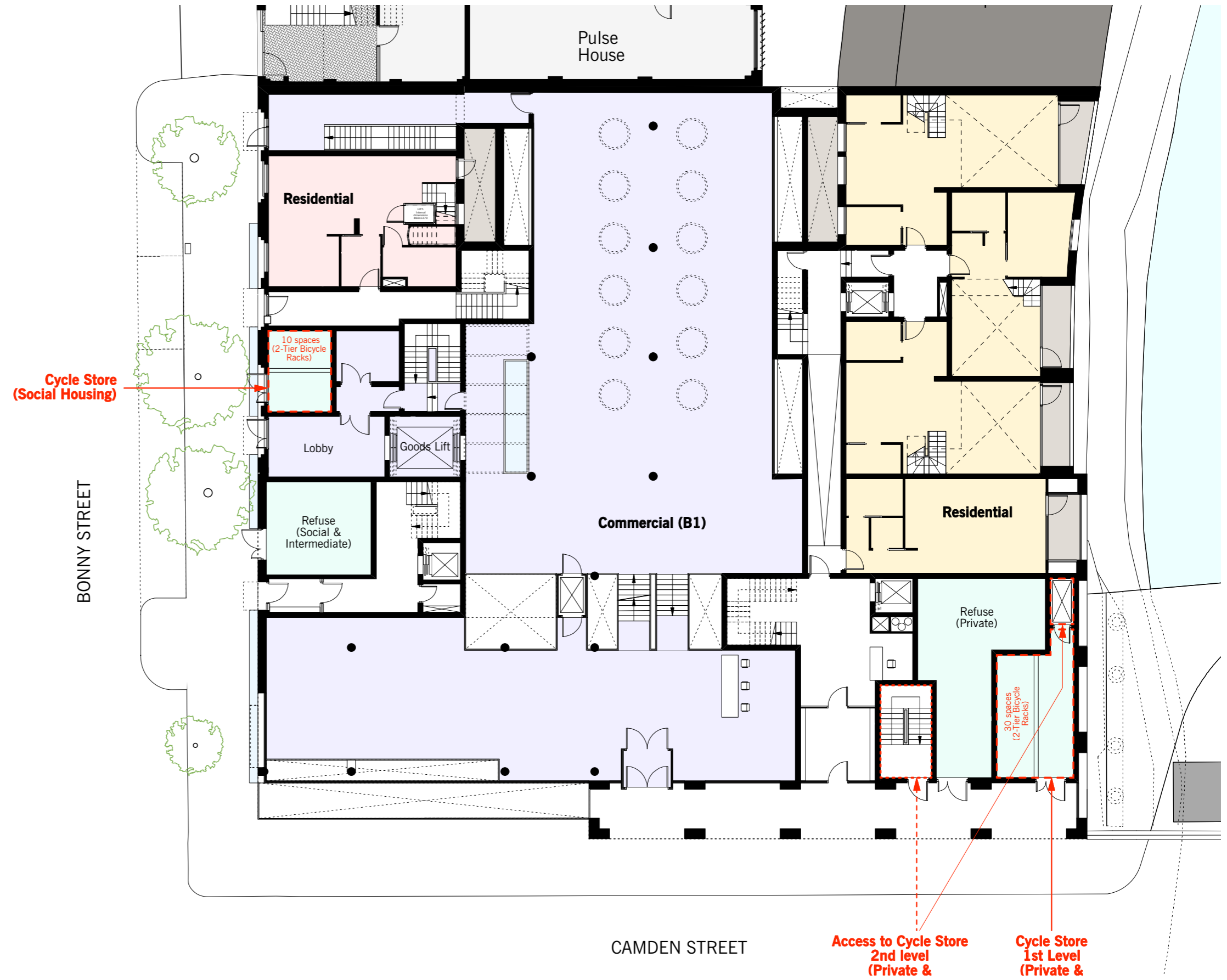
# Residential - Cycle Stores

- Two cycle stores are provided in the proposed scheme:
- The Social Housing cycle store is located at ground floor level providing 14 places
  - The cycle store for the Intermediate and Private Residential is located in the lower ground floor level providing 56 places and is accessible via a dedicated cycle lift from street level



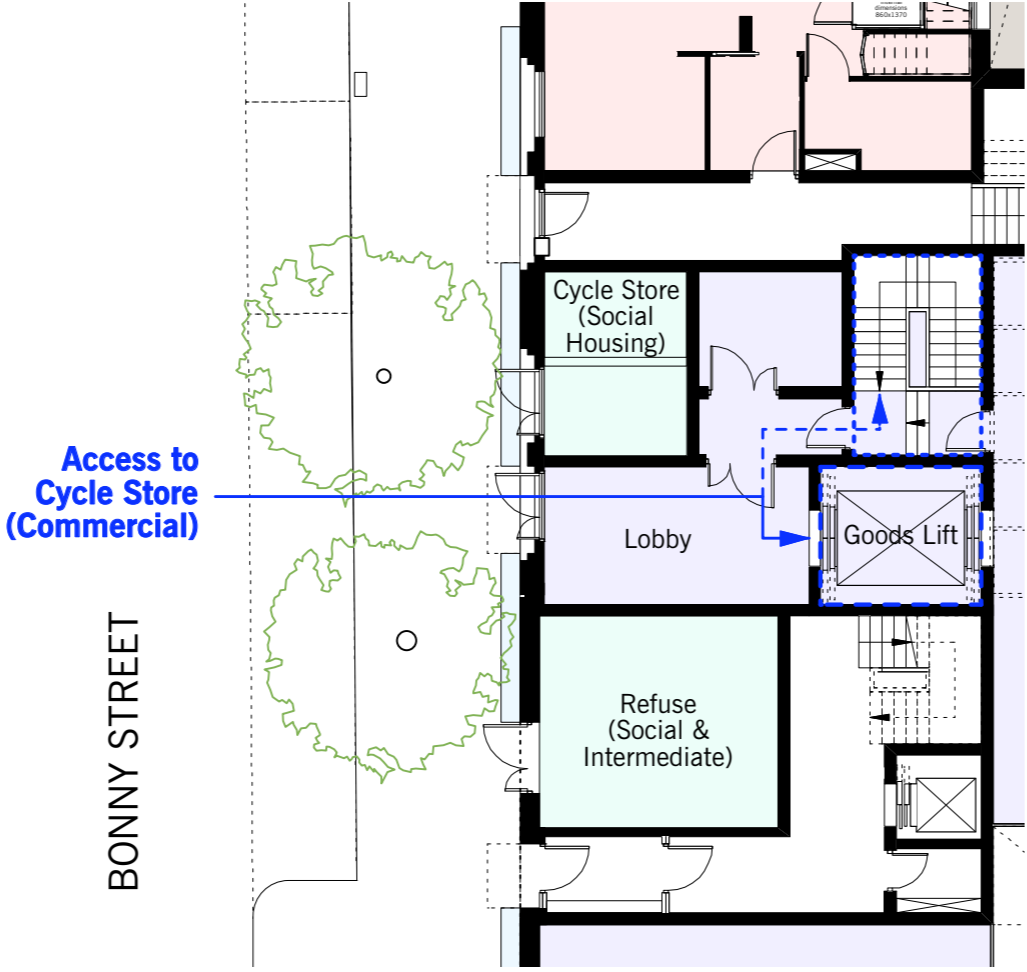
Ground Floor Plan (Street Level)

# Residential - Cycle Stores

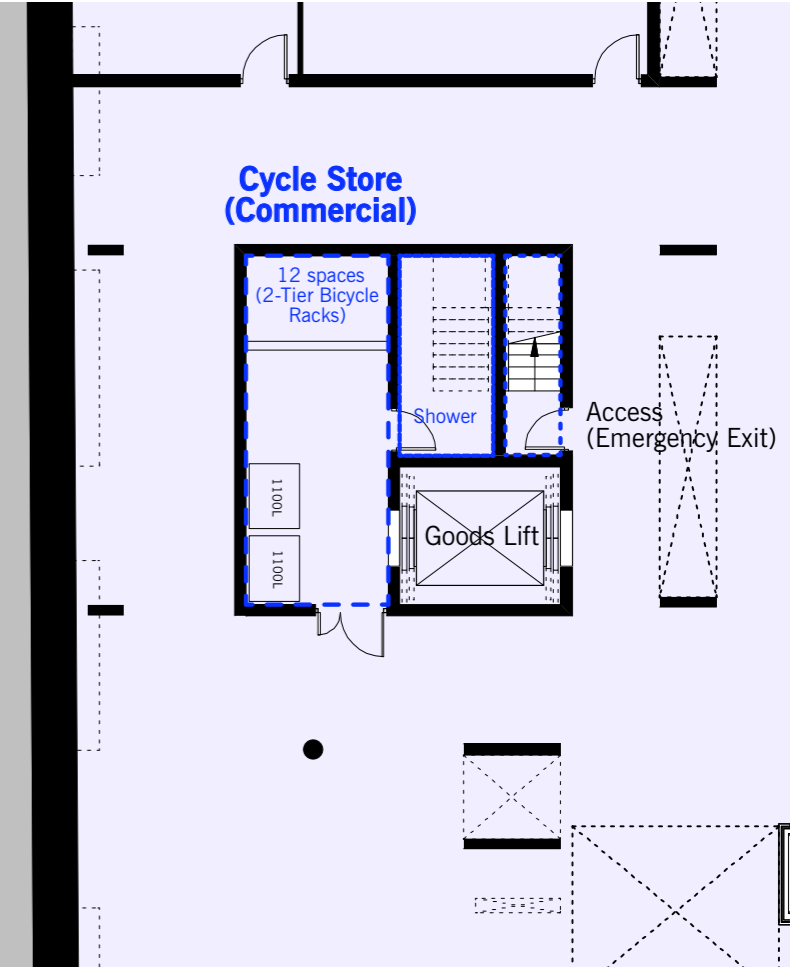


Lower Ground Floor Plan (Canal Level)

Commercial - Cycle Stores



Ground Floor Plan (Street Level)



Lower Ground Floor Plan (Canal Level)