

2 CHALCOT SQUARE  
LONDON N1  
27.06.14

INTERNAL DOORS

---



Photo 36  
Location: Lower Ground Floor  
LGD - 08  
Comments: Discarded

2 CHALCOT SQUARE  
LONDON N1  
27.06.14



Photo 37  
Front door  
GD - 05  
Comments: New door to match others in street  
As below



Photo 38  
Door number 5 Chalcot Sq

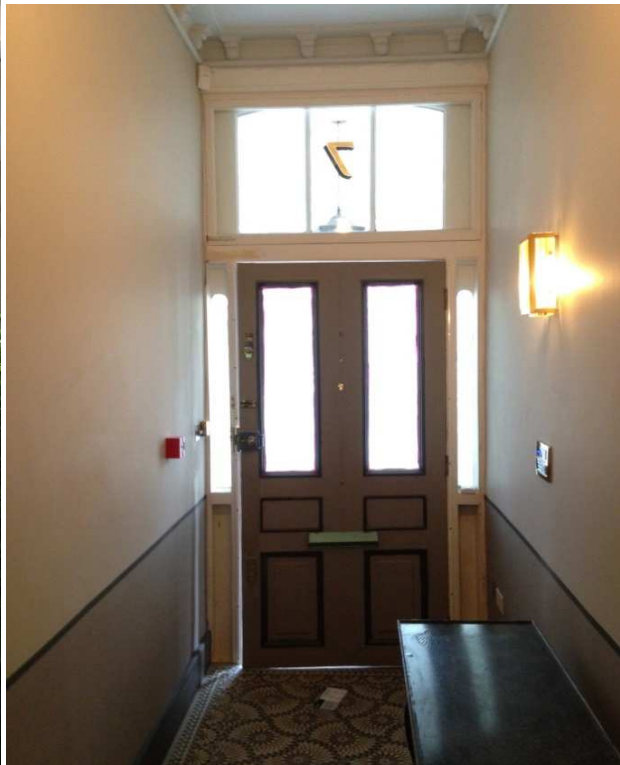


Photo 39  
Door number 7 Chalcot Sq

2 CHALCOT SQUARE  
LONDON N1  
27.06.14



Photo 40  
Location: Ground floor  
GD - 04  
Comments: Discard



Photo 41  
Location: First Floor  
FD - 01  
Comments: Discard



Photo 42  
Location: First floor  
FD - 02  
Comments: Reuse in LGD  
07

2 CHALCOT SQUARE  
LONDON N1  
27.06.14



Photo 43  
Location: Third floor  
TD - 03  
Comments: Re Use on third floor in TD 06



Photo 44  
Location: Second floor  
SD - 01  
Comments: Re Use on Third floor in TD 07



Photo 45  
Location: Second floor  
SD - 04  
Comments: Re Use on Third floor in TD 08

**Note** :Infill panels and half-round beading were added to the doors in the mid 20th century, and that we propose to remove these infill panels and trims, to expose the original recesses panels and profiled mouldings