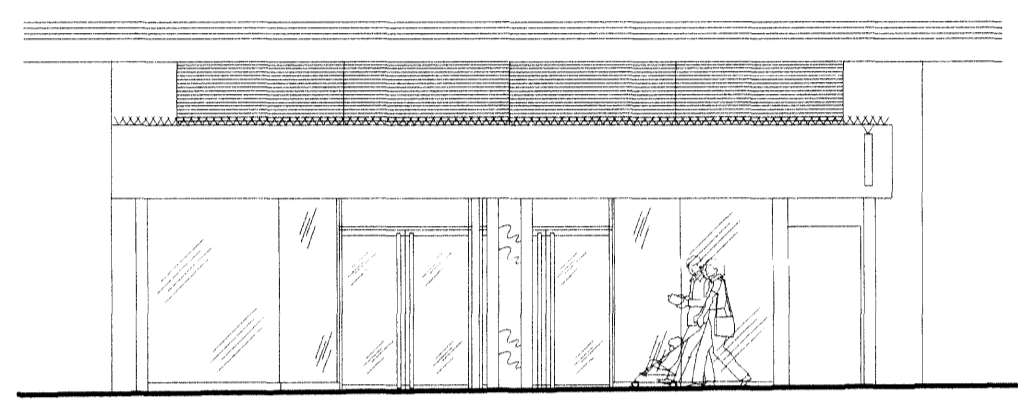
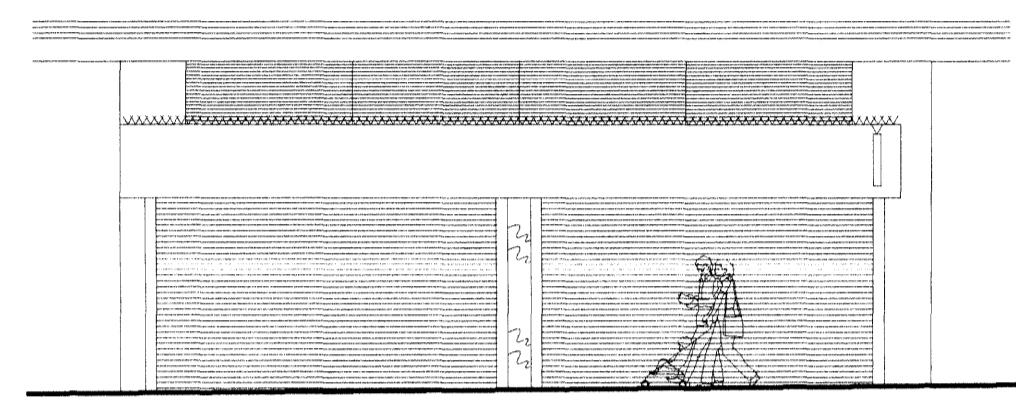


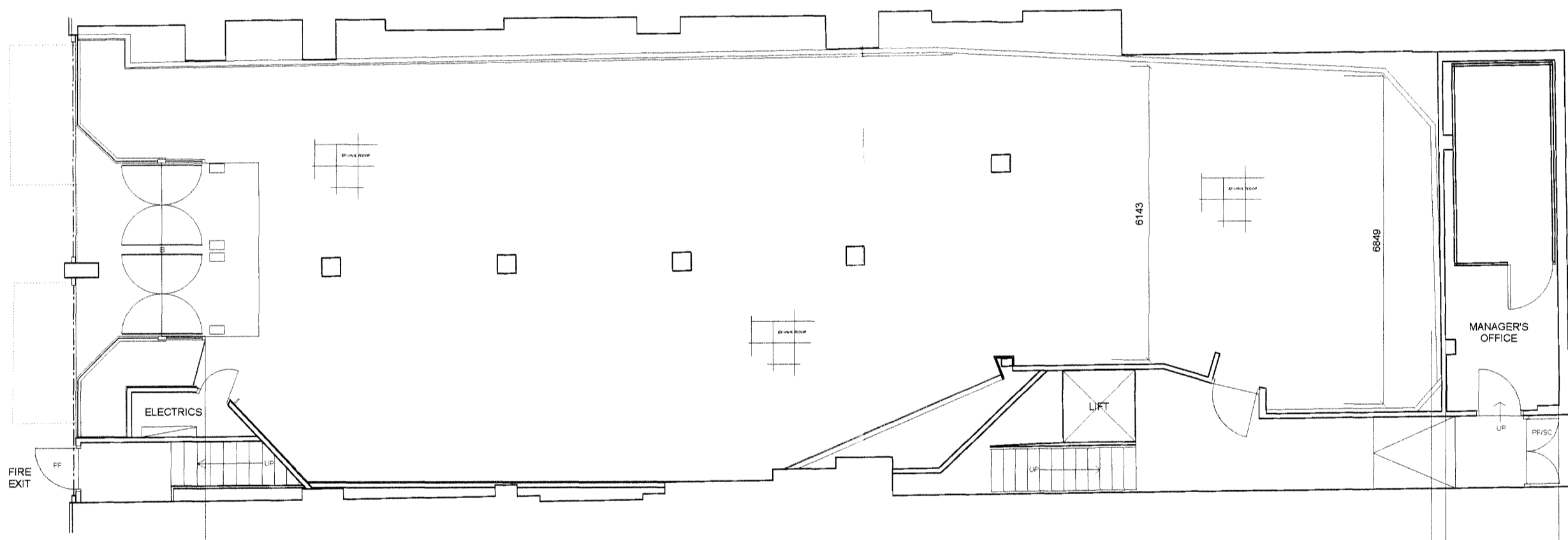
SYMBOL	SYMBOL DESCRIPTION	SYMBOL	SYMBOL DESCRIPTION	SYMBOL	SYMBOL DESCRIPTION	SYMBOL	SYMBOL DESCRIPTION	SYMBOL	SYMBOL DESCRIPTION	SYMBOL	SYMBOL DESCRIPTION	SYMBOL	SYMBOL DESCRIPTION	SYMBOL	SYMBOL DESCRIPTION
○	DOWN LIGHTS SET WITHIN SOFFIT	⏏	SWITCH GEAR/PULSE BOX	⚡	MANUAL WIND	🔥	FIRE ALARM PANEL	🔔	DOOR BELL SOUNDER	📺	CCTV CONTROL PANEL	🚨	FLASHING BEACON LINKED TO FIRE/INTRUDER ALARM SYSTEMS	🔊	BUZZER SOUNDER LINKED TO CALL POINT W/ DISABLED WC
⊠	MODULAR FLUORESCENT FITTING	📡	WTEL CONTROL BOARD	🔥	SINGLE/MULTI POINT WATER HEATER	🔥	INCOMING MAINS AND METER	🔔	DOOR BELL PUSH	📺	WALL/CEILING MOUNTED INTRUDER ALARM DETECTOR	🔊	TILL BUZZER SOUNDER	🔊	DISABLED WC ALARM CALL POINT LINKED TO BUZZER POSITIONS WITHIN STAFF AREA
⊠	HQI LIGHT FITTING	🔑	EMERGENCY LIGHTING TEST KEY SWITCH	🔥	FIRE ALARM SOUNDER	🔊	SPEAKER	🔑	ROLLER SHUTTER ROCKER SWITCH	📺	CCTV MONITOR	🔊	TILL BUZZER	⊠	WATER RIM FITTING REF SANITISE MANU. SWAP/O
⊠	BATTEN FLUORESCENT FITTING	🔑	INDICATES RED 24HR SOCKETS	🔥	FIRE ALARM BREAK GLASS CALL POINT	🌬	WALL MOUNTED AIR CON UNIT	📡	BT ANALOGUE PHONE POINT/ DATA POINT/FAX PHONE POINT	📺	TWO FINGER PANIC BUTTON	🔊	DISTRIBUTION FUSE BOARDS	⊠	PENDANT LIGHT
⊠	LOBBY LIGHT FITTING	🔑	4 WAY POWER SOCKET	🔥	GREEN BREAK GLASS TO RELEASE FIRE ESCAPE DOOR	🌬	AIR CONDITIONING CONTROL PANELS	📺	DOOR WITH HALF HOUR FIRE RATED CONSTRUCTION & FITTED WITH GLAZED VISION PANEL. SELF-CLOSING, INTUMESCENT STRIPS AND SMOKE SEALS TO FRAME. ALL TO BE 478 PARTS 20 TO 23.	📺	LOCATION OF CCTV CAMERA WIRES BACK TO MULTIPLEXER SITED WITHIN MANAGERS OFFICE. BY NOMINATED CCTV ENGINEER.	🔊	INTRUDER ALARM PANEL / KEY PAD	⊠	RECESSED DOWN LIGHT
⊠	TRACK & SPOT LIGHT FITTING	🔑	DOUBLE/SINGLE POWER SOCKET	🔥	REMOTE SMOKE DETECTOR WITH LED INDICATOR	🌬	CEILING MOUNTED CASSETTE AIR CONDITIONING UNIT	📺	DOOR FITTED WITH PANIC TYPE HORIZONTAL CRASH BARS	📺	INTRUDER ALARM PANEL	🔊	POSITION OF FREE ISSUE MUSIC SYSTEM	⊠	VENTILATION SPRIGOT
⊠	INTERNALLY ILLUMINATED 'MAINTAINED' EMERGENCY EXIT SIGN	🔑	UNSWITCHED 13A SINGLE PHASE POWER SUPPLY POINT	🔥	SMOKE DETECTOR / HEAT DETECTOR	🌬	POLE FEED FOR ELECTRICAL SERVICES TO TILLS AND BELLS WITH 230V TWIN SOCKET OUTLETS. NOTE: DATA CABLING CAT 5 & R/45 SOCKETS BY POUNDLAND SPECIALIST	📺	10 WIRE GEORGIAN WIRE. GLAZED VISION PANEL FITTED WITHIN DOOR	📺	WARM AIR CURTAIN	🔊	LAST PERSON OUT LIGHTING KEY SWITCH	⊠	VOICE ACTIVATED SPEAKER
⊠	EMERGENCY LIGHTING POINT	🔑	LIGHT SWITCH OPERATING LOCAL ROOM LIGHTING	🔥	2.5 kg CARBON DIOXIDE FIRE EXTINGUISHER MOUNTED TO WALL	🌬	WATER TYPE FIRE EXTINGUISHER MOUNTED TO WALL	📺	SWITCH FOR REMOTE HEATER	📺	500 x 800mm RECESSED MODULAR FLUORESCENT FITTING WITH CAT 3 DIFFUSER	🔊	SPRINKLER HEAD ABOVE AND BELOW CEILING	⊠	INTERCOM
⊠	ACCESS PANEL	🔑	ROLLER SHUTTER KEY SWITCH	🔥	FOAM FIRE EXTINGUISHER MOUNTED TO WALL	🌬	VENTILATION GRILLES FLUSH FITTED TO SUSPENDED CEILING	📺	WALL HEATER	📺	HOT AIR DRIER	🔊	MANS WATER SUPPLY/STOP COCK		



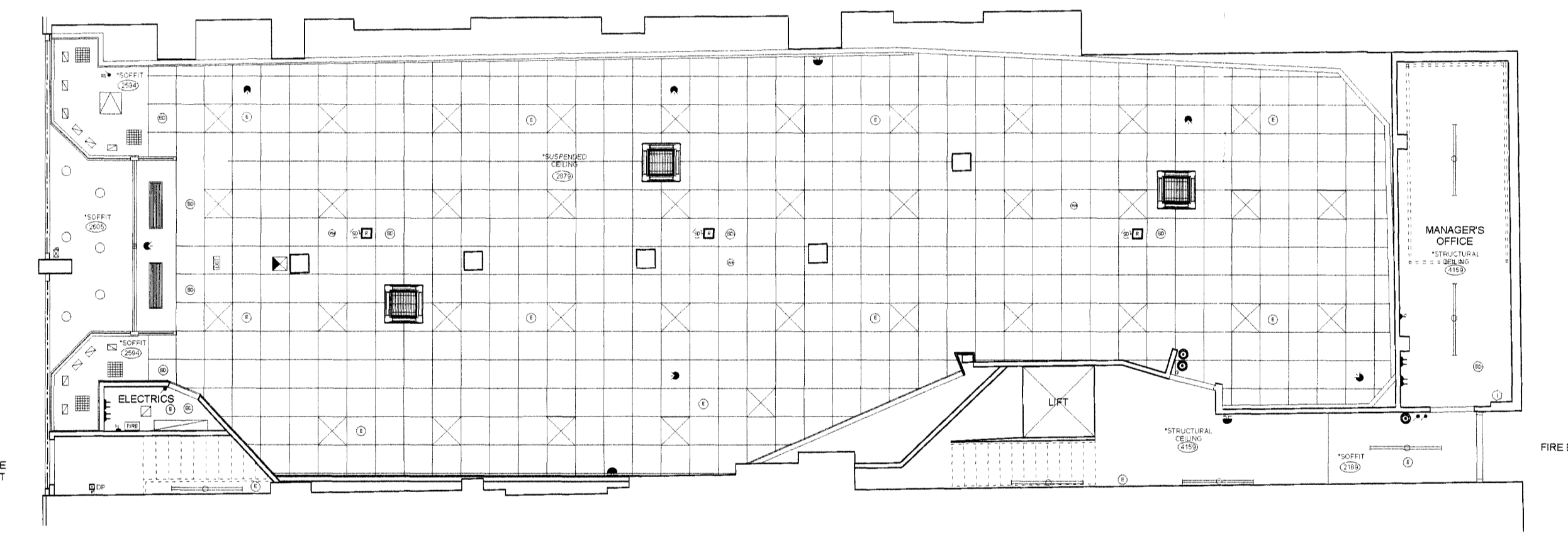
EXISTING SHOP FRONT ELEVATION, 1:100.



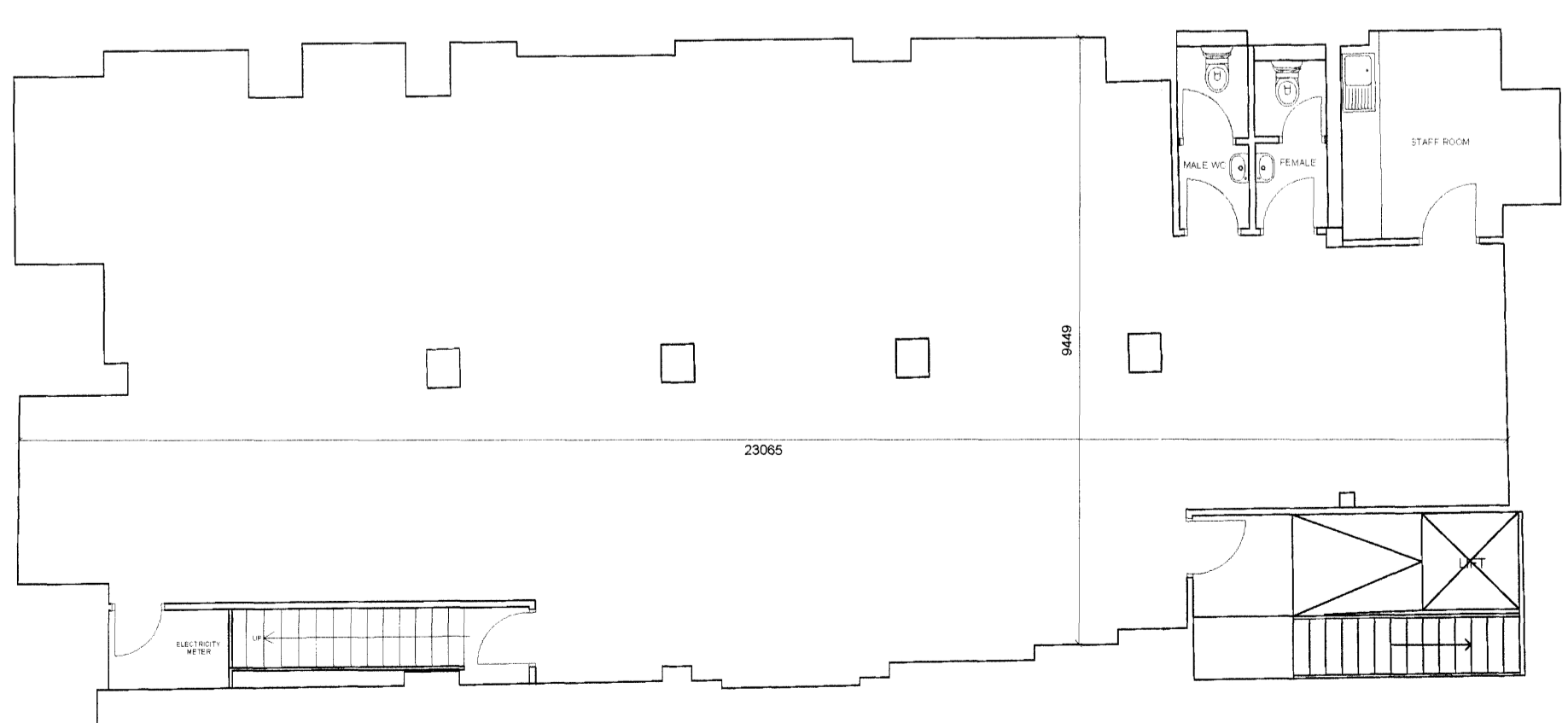
PROPOSED SHOP FRONT ELEVATION, 1:100.  
WITH EXISTING ROLLER SHUTTER IN CLOSED POSITION



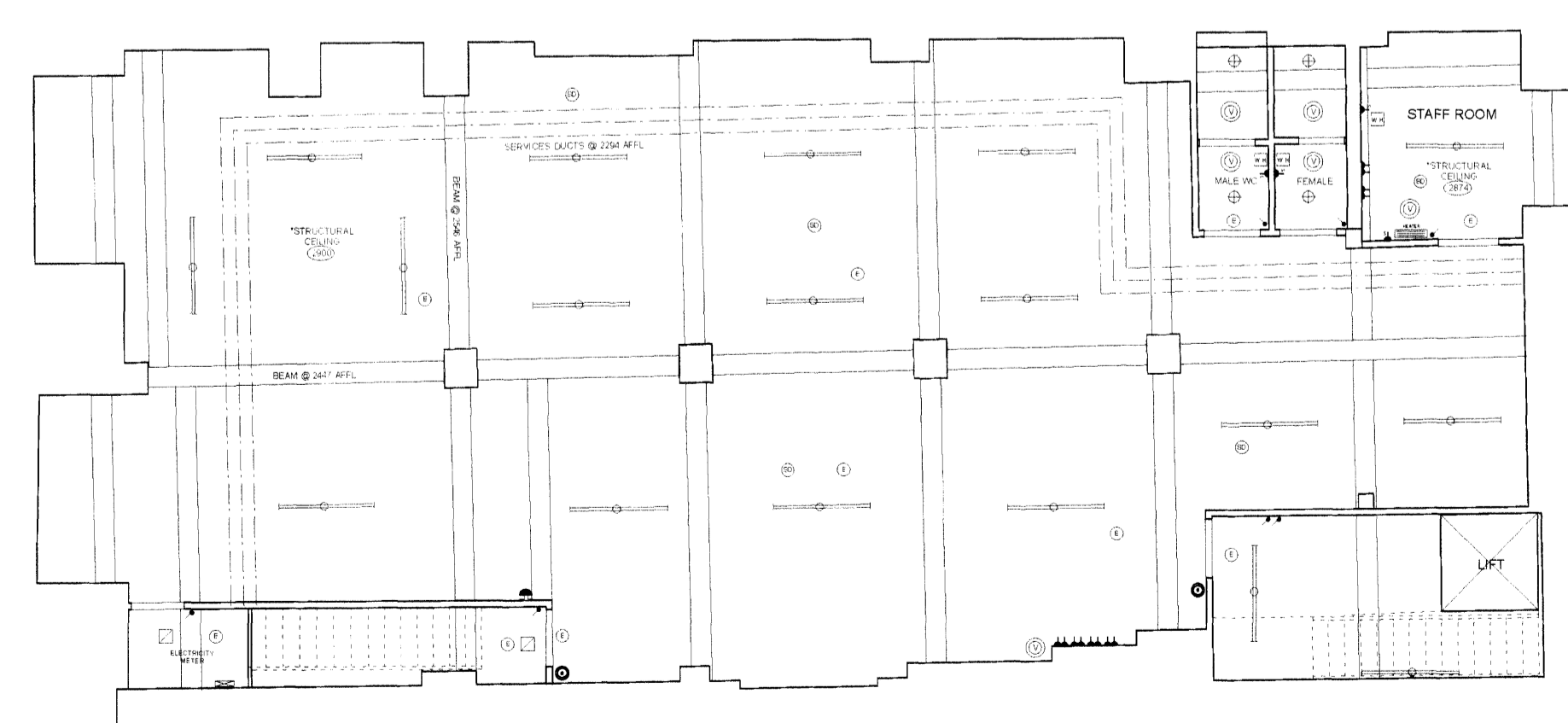
EXISTING GROUND FLOOR LAYOUT PLAN, 1:100.



EXISTING GROUND FLOOR RCP LAYOUT PLAN, 1:100.



EXISTING BASEMENT LAYOUT PLAN, 1:100.



EXISTING BASEMENT RCP LAYOUT PLAN, 1:100.

AREA SCHEDULE	SQ. M	SQ. FT.
TOTAL GROUND FLOOR AREA	281.9	3140
TOTAL BASEMENT FLOOR AREA	221.6	2384
<b>TOTAL GROSS FLOOR AREA</b>	<b>513.5</b>	<b>5525.26</b>

APPROVED BY	DATE
PROPERTY DIRECTOR	
RETAIL OPERATIONS DIRECTOR	
HEAD OF STORE DEVELOPMENT	
MERCHANDISE MANAGER	

NOTE: PDF FORMAT DRAWINGS ARE NOT TO BE SCALED



DRAWN	VERSON PARK, WELL HANS ROAD, WILLENHALL, WEST MIDLANDS, WV13 3DT. TEL: 0121 888 7000.	BRANCH	CAMDEN
DATE	June 2014	PROJECT	136 CAMDEN HIGH STREET, CAMDEN, LONDON, NW1 0LU
SCALE	1:100 @ A1	TITLE	EXISTING SURVEY
		DWG. No.	PL/CAMDEN/1401
		REV	