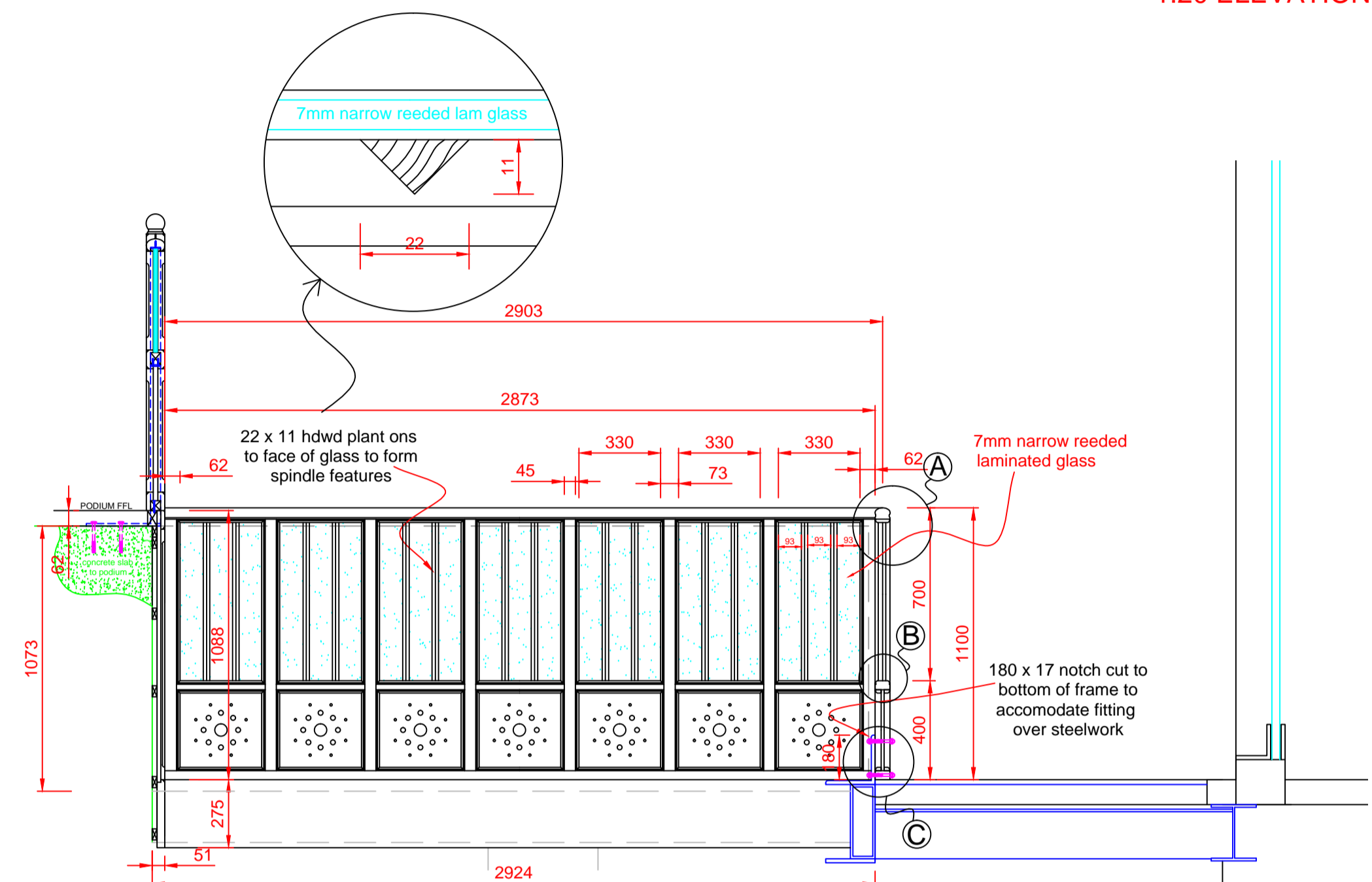


1:20 ELEVATION "1-1"

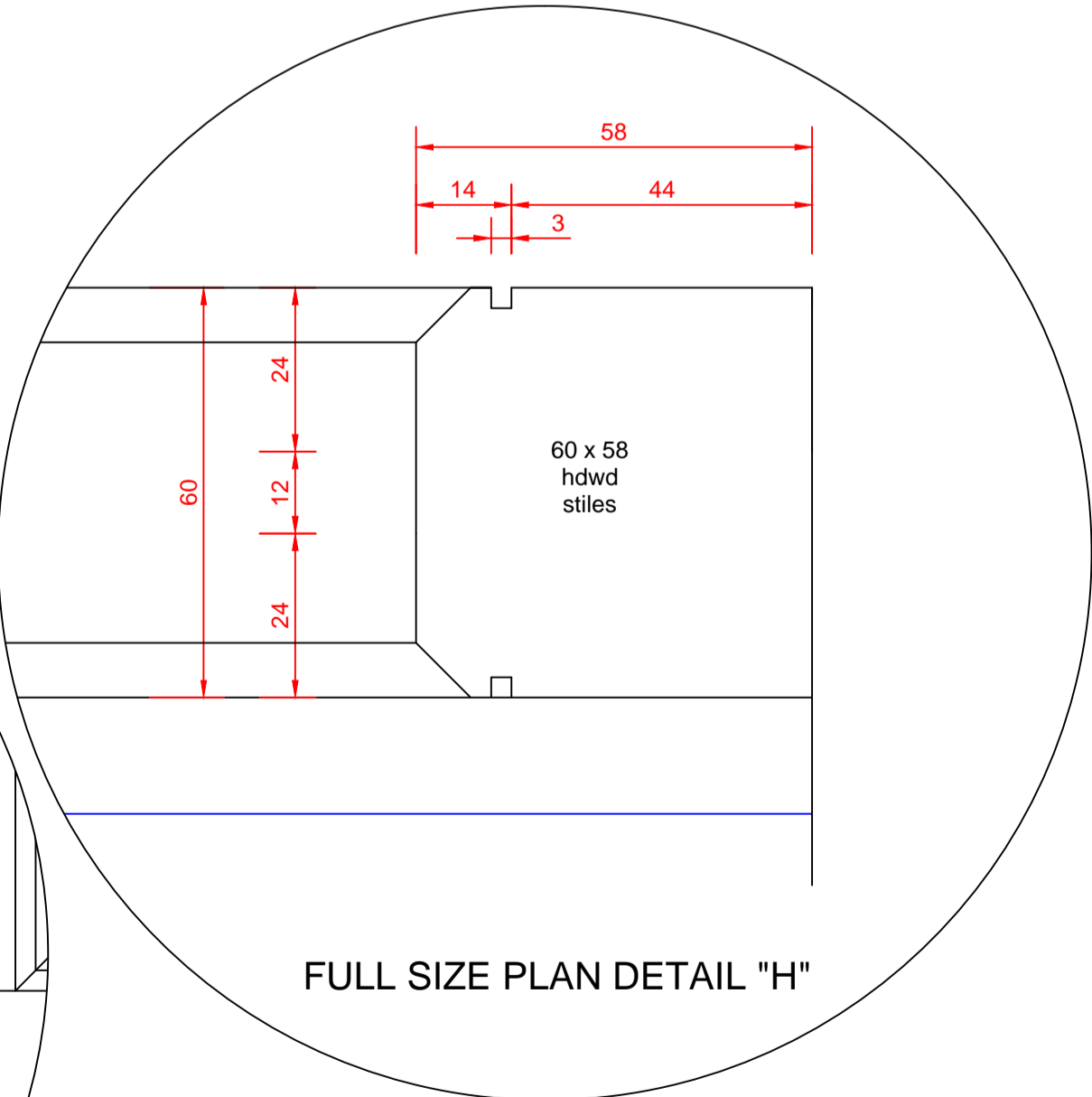
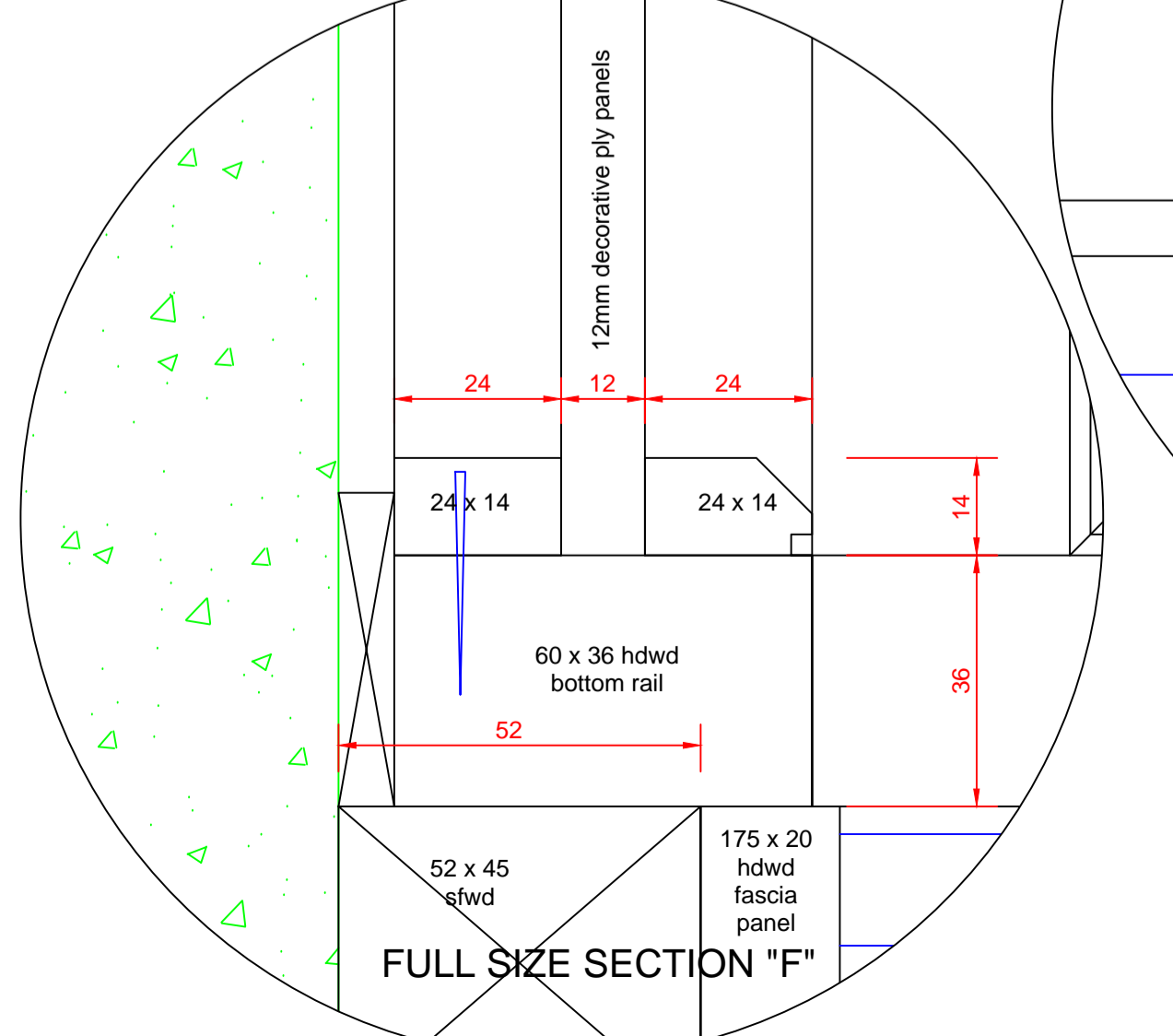
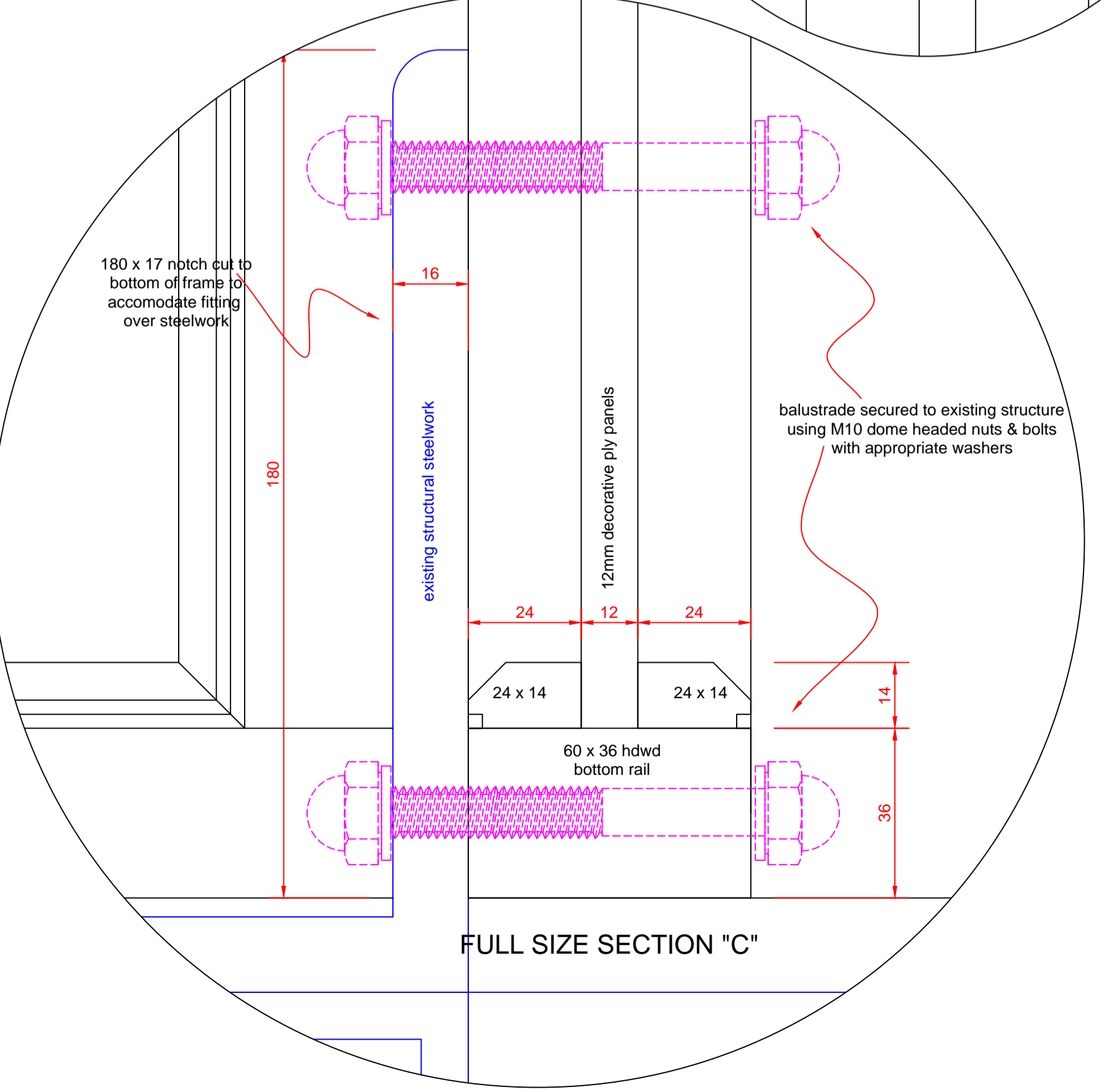
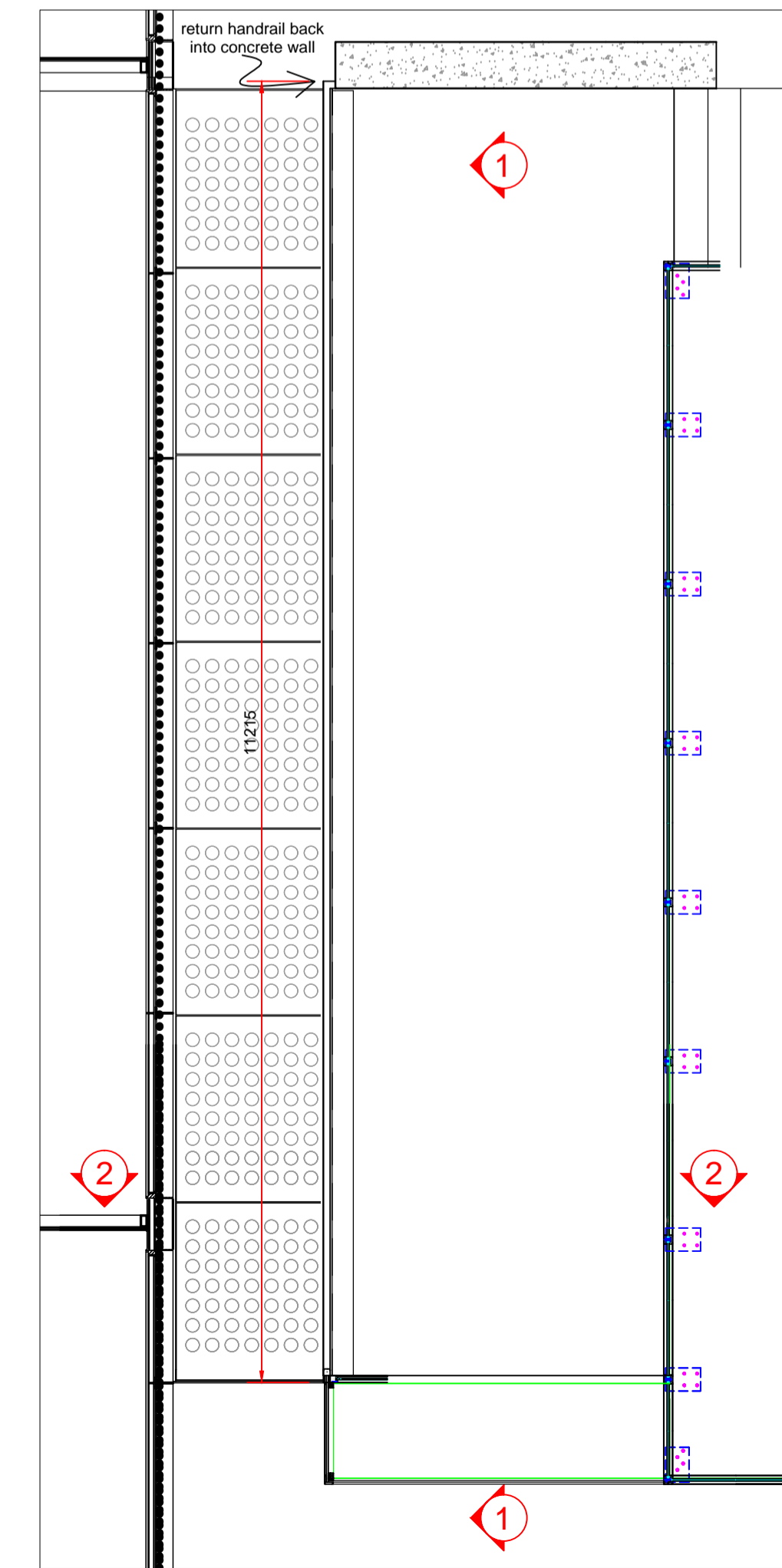
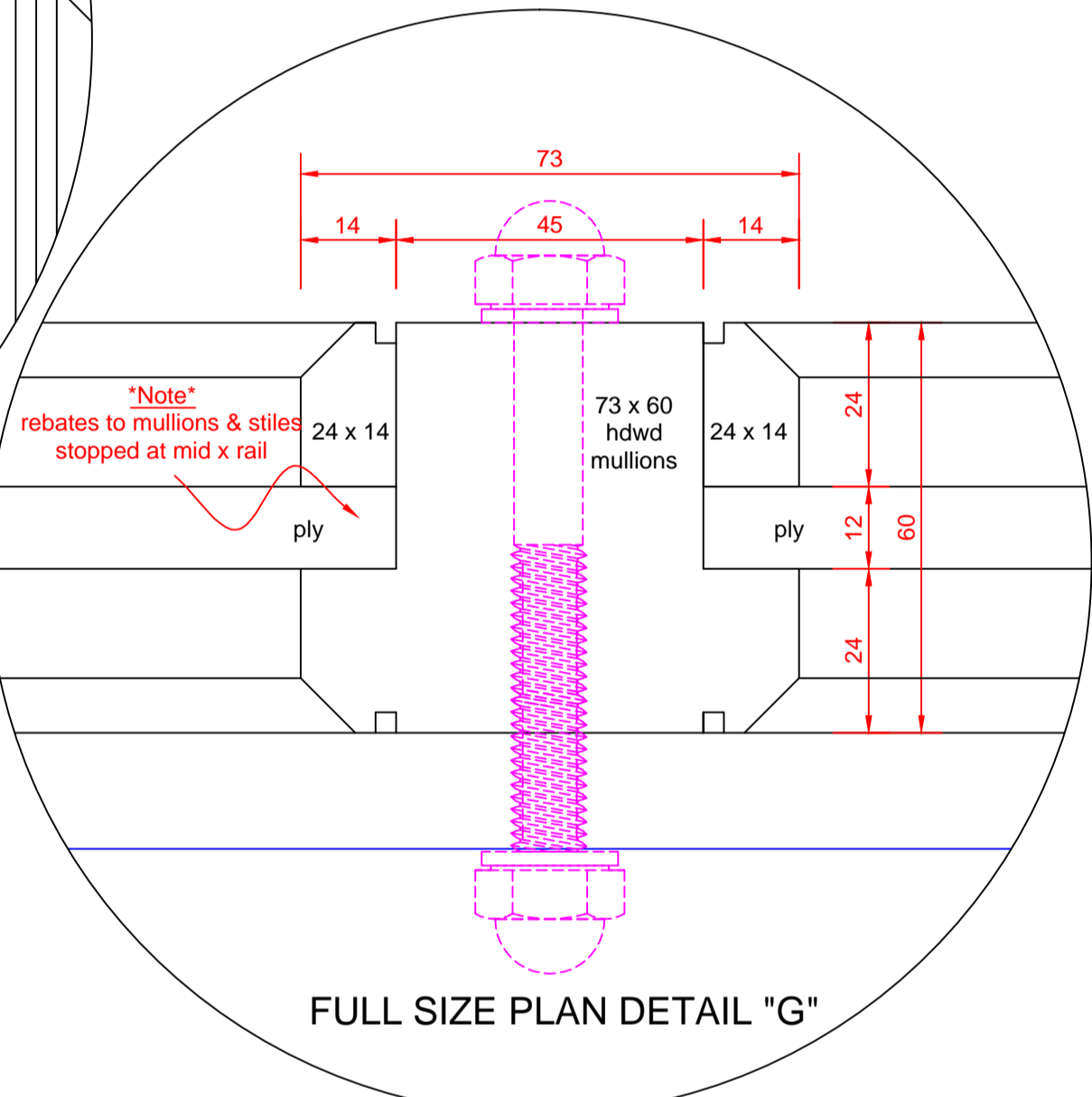
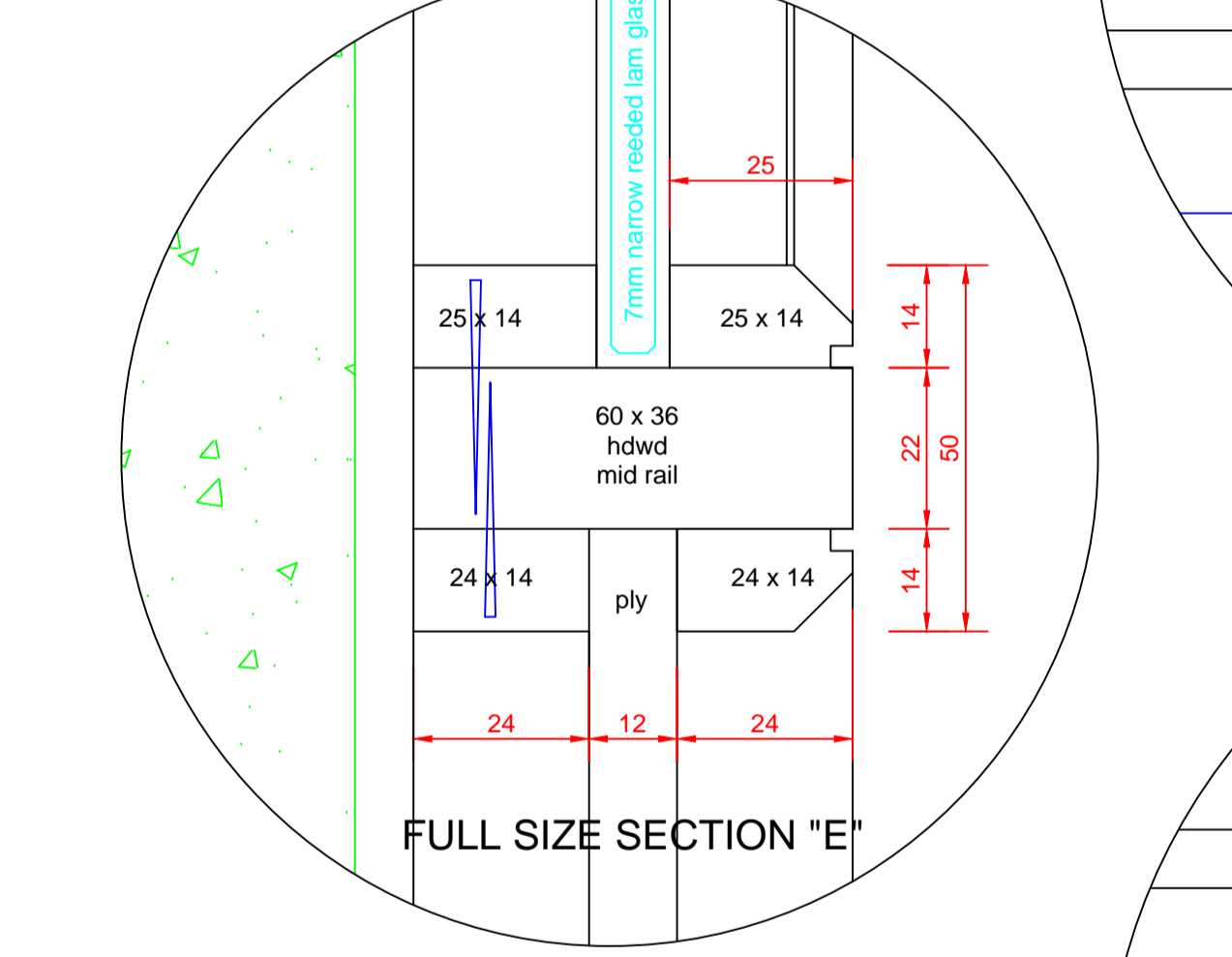
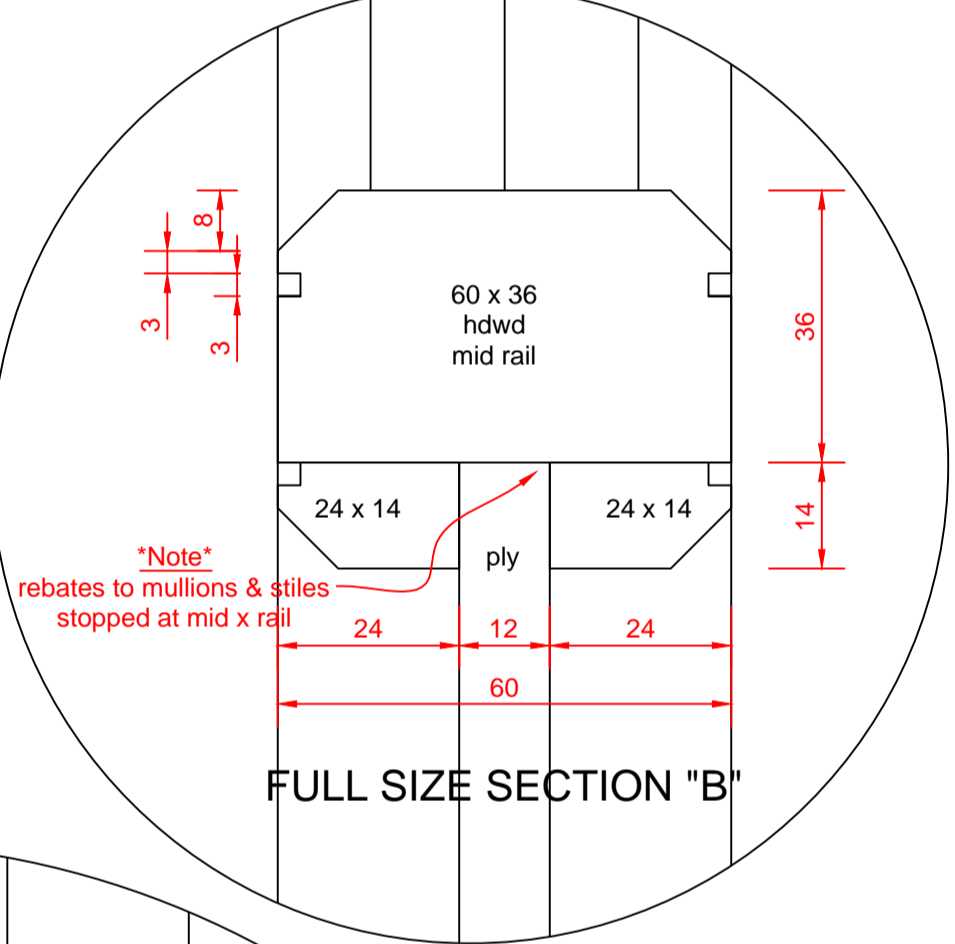
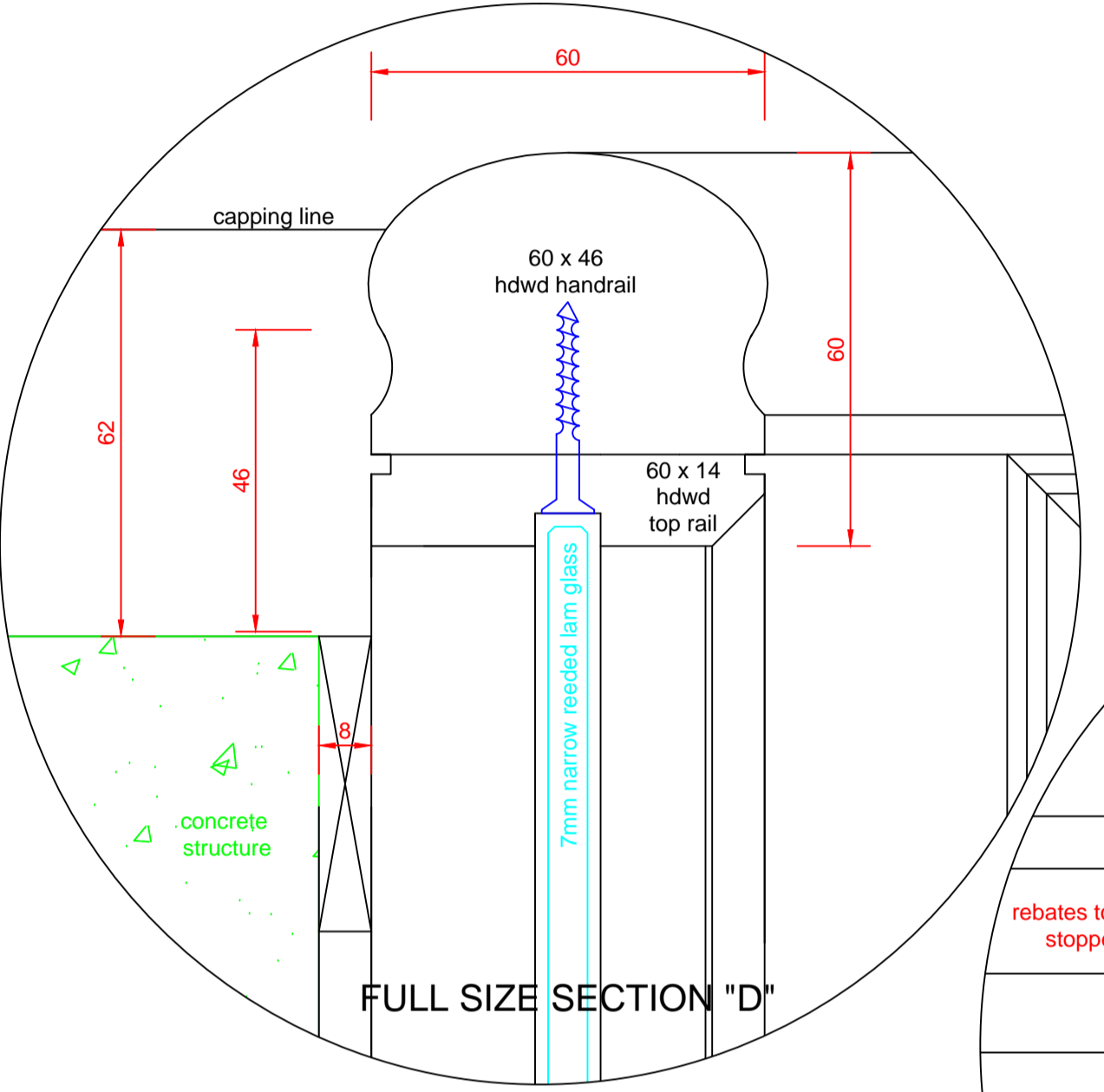
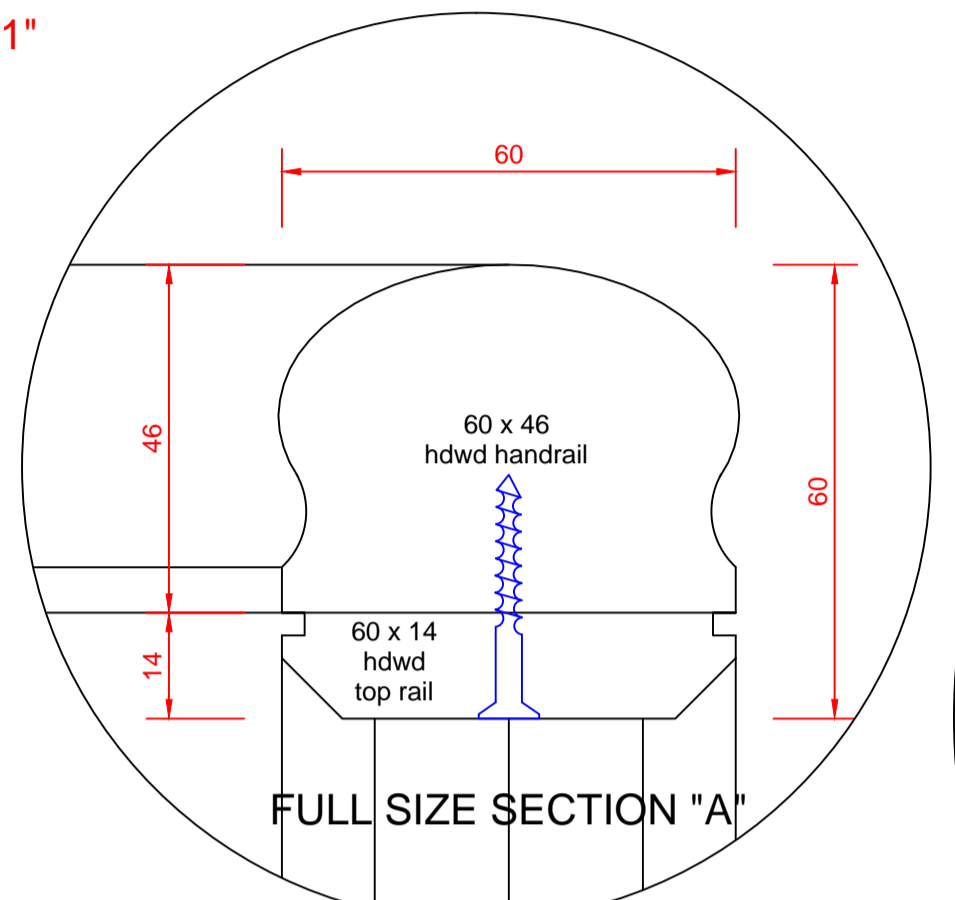
© Copyright reserved
 This drawing is the property of Interiors UK Ltd and is issued on the condition that it is not retained, copied or disclosed without authorisation.

ALL FINISHES TO SAMPLES AS APPROVED BY MACAULEY SINCLAIR.

All hdwd "sapele" in antique black with percentage of gloss T.B.C.
 Lower decorative ply infill panels. Finished in black gloss paint.
 Glass to be 7mm narrow reeded laminated.



1:20 ELEVATION "2-2"



Rev	Description	Date
C	Finishes added.	11-7-14
B	Dimensions added.	24-6-14
A	Timber post section, dimensions increased following comments from structural engineer.	19-6-14

Scope ref No. 5.64, 5.65.

Client: DISHOO

Project: STABLES UNIT, KINGS CROSS, LONDON.

Drawing title: BALUSTRADE TO BRIDGE AREA.

(Relating to Macaulay Sinclair Design drawing 05 (25))

Project ref.	Scale	Drawing No.
AS INDICATED ON DWG @ A1		014

Drawn by	Date	Rev
Steve. C.	13-6-14	C

INTERIORS UK
 SPECIALIST LEISURE CONTRACTORS

the new oaks
 wellington st
 oaks
 huddersfield
 hd3 3ep

t: 01484 646363
 f: 01484 645352
 e: steven.cullen@interiors-uk.net
 www.interiors-uk.net