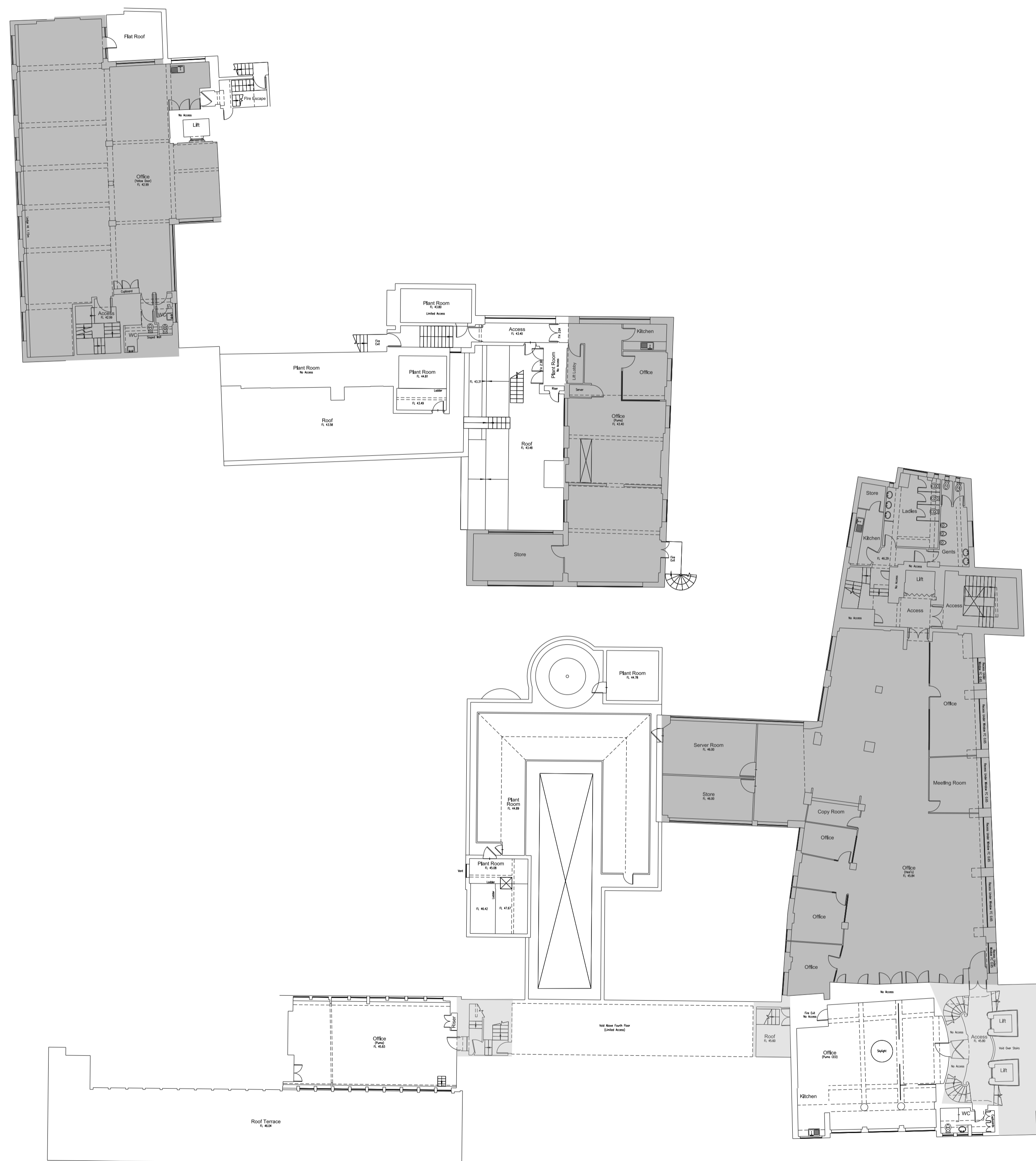


NOTES:
 1. THIS DRAWING NOT TO BE SCALED. FIGURED DIMENSIONS ONLY TO BE TAKEN.
 2. SHOULD ANY DISCREPANCIES BE FOUND WITH THIS DRAWING, PLEASE INFORM THIS OFFICE.
 3. COPYRIGHT OF THIS DRAWING IS OWNED BY J.MARCHITECTS.
 4. THIS DRAWING SHOULD BE READ IN CONJUNCTION WITH THE PROJECT HEALTH & SAFETY FILE AND ANY TASK BASED METHOD STATEMENTS



- Shared circulation spaces to have limited work carried out as part of phase 2 refurbishment.
- Not part of phase 2 refurbishment



REV.	DESCRIPTION	DATE	DRN BY	CHKD BY

jmarchitects

PROJECT
Heals Refurbishment Phase 2
 TITLE
Fifth Floor as Existing
 CLIENT
Threadneedle Property Investments Ltd
 JOB No. 5354 DRAWING No. P(00)015 REVISION /
 SCALE 1:200 @ A1 DRAWN BY AM CHECKED BY MB
 STATUS Planning DATE 09/01/14

2nd Floor
 Threeways House
 40-44 Clapstone Street
 London
 W1W 5DW
 T: 0207 580 5330
 F: 0207 436 5348
 Ion@jmarchitects.net
 www.jmarchitects.net