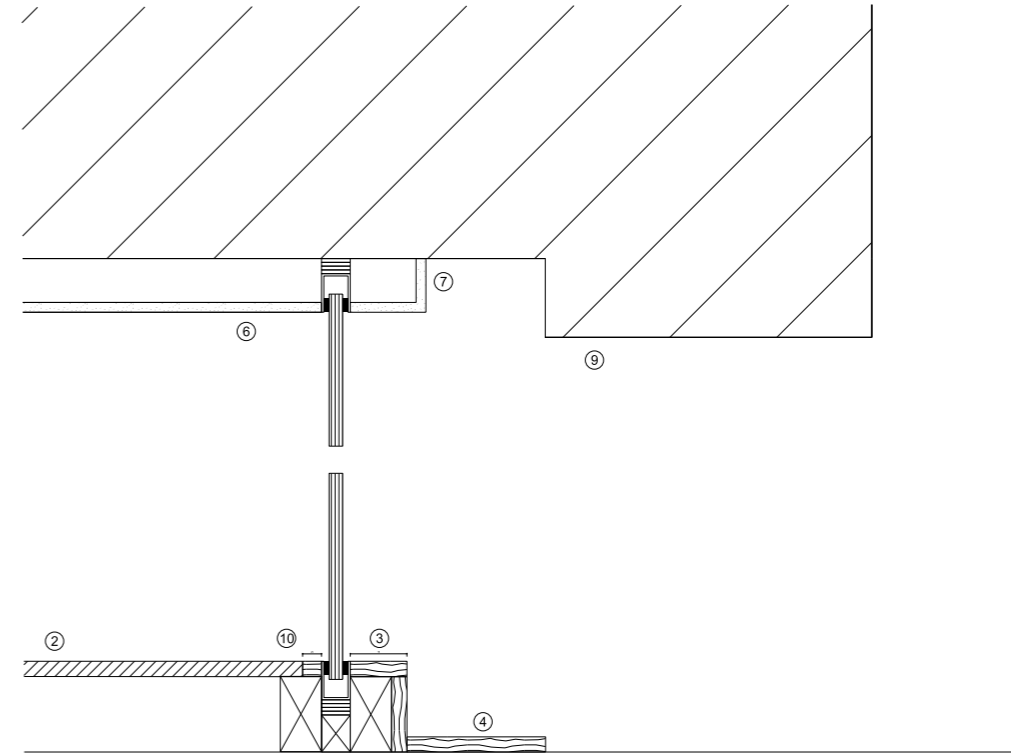
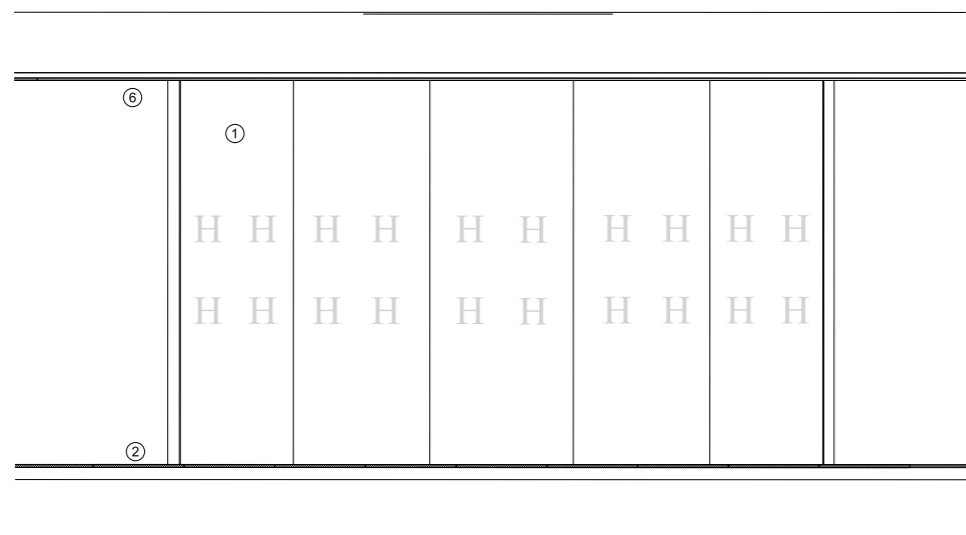
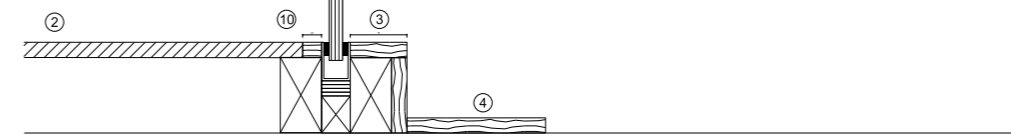


Section at head



Section at base



NOTES:

1. READ IN CONJUNCTION WITH ARCHITECTS DRAWING C(0)107
 2. READ IN CONJUNCTION WITH ARCHITECTS SPECIFICATIONS AND SCHEDULES AND WITH RELEVANT DOCUMENTS FROM OTHER CONSULTANTS. REPORT ANY DISCREPANCIES FOUND TO ARCHITECT AT TIME OF PRICING.

- ① Frameless 60/0 fire rated glass screen in safety glass to meet AD K. Glass to be in five equal panels at equal angles to suit & to follow stair radius. Decorative manifestation is indicative only - exact pattern tbc.
- ② Office area to have new 600 x 600 suspended floor laid on existing structural slab. FFL to be 100mm above structural slab.
- ③ New 18mm x 75mm HW edge strip to base on stair side of glass to follow radius of stair. Finish to HW tbc. HW strip and glazing supported on timber base plate and packing as required.
- ④ HW edge piece to meet existing timber staircase finish to follow radius of stairs. Finish & edge detail to HW tbc.
- ⑤ White painted HW edge strips to house/hide edge frame to frameless glass where it meets existing wall finish.
- ⑥ Ceiling to office lined with 12mm plasterboard on metal framing 35mm thick or sufficient to hide conduit.
- ⑦ Plasterboard bulkhead following radius of stair on stair side of frameless glazing with glazing frame and support/fixing to concrete soffit hidden behind plasterboard lining to ceiling. Edges to be neatly finished with metal angles and/or painted timber trims to suit.
- ⑧ Frameless glass to have 10mm max. clear fire resistant silicone joints to maintain 60/0 integrity.
- ⑨ Approximate line of existing bulkhead to stair.
- ⑩ New 18mm x 25mm HW edge strip to base on stair side of glass. Finish to HW tbc. HW strip supported on timber base plate and packing as required.

jmarchitects

2nd Floor
 Threeways House
 40-44 Clipstone Street
 London
 W1W 5DW
 T: 0207 580 5330
 F: 0207 436 5348
 lon@jmarchitects.net
 www.jmarchitects.net

PROJECT	JOB No.	DRAWING No.	REVISION
Heals Refurbishment Phase 2	5354	C(0)110	/
TITLE	SCALE	DRAWN BY	CHECKED BY
3rd floor circular stairwell screen	1:50/1:10 @ A3	AM	MB
CLIENT	STATUS	DATE	
Threadneedle Property Investments Ltd	Planning/Tender	June 2014	

REV.	DESCRIPTION	DATE	DRN BY	CKD BY