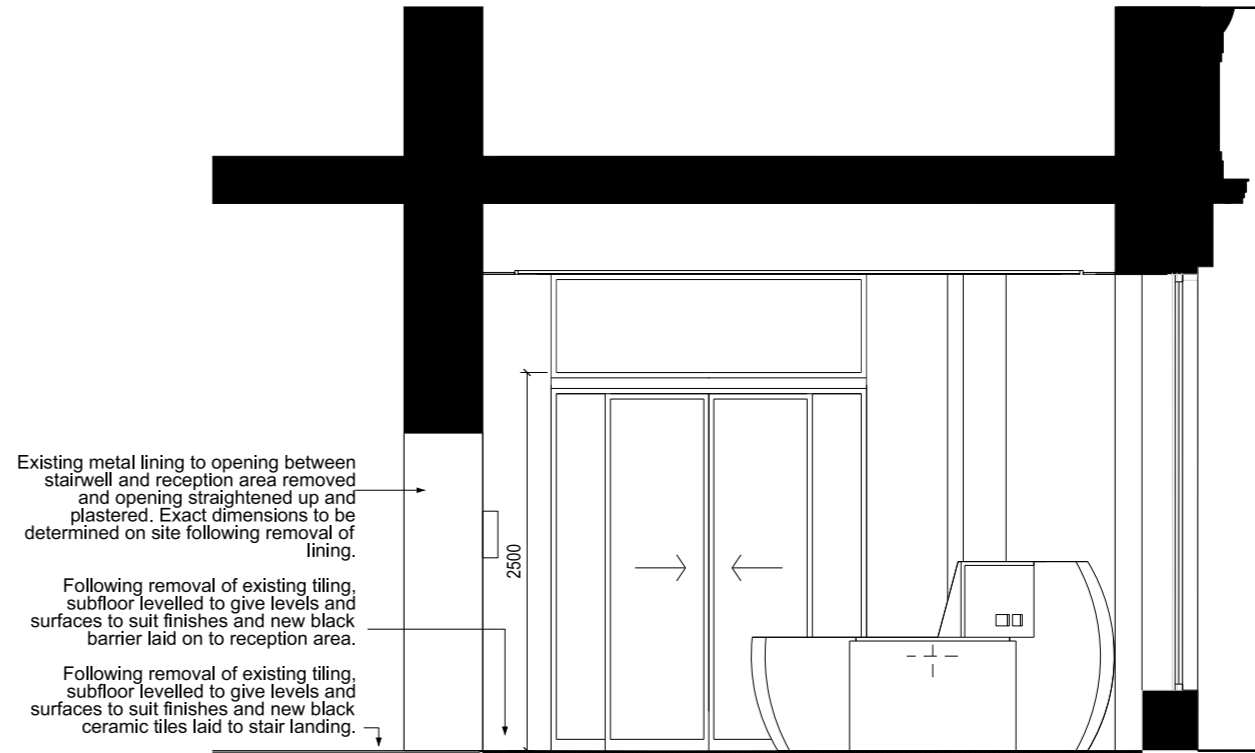
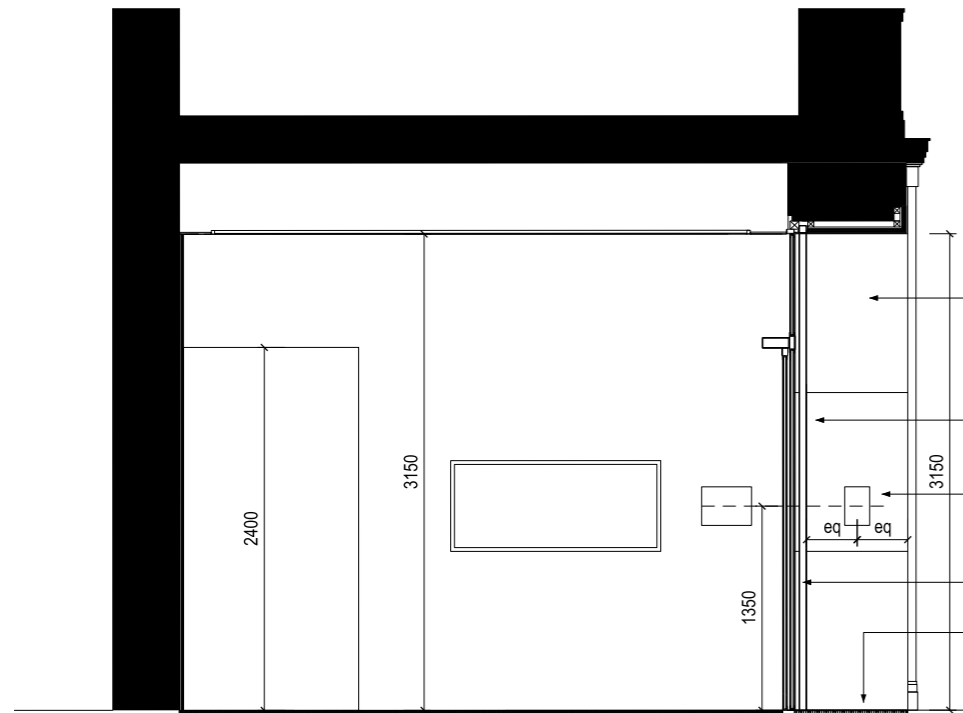




SECTION A

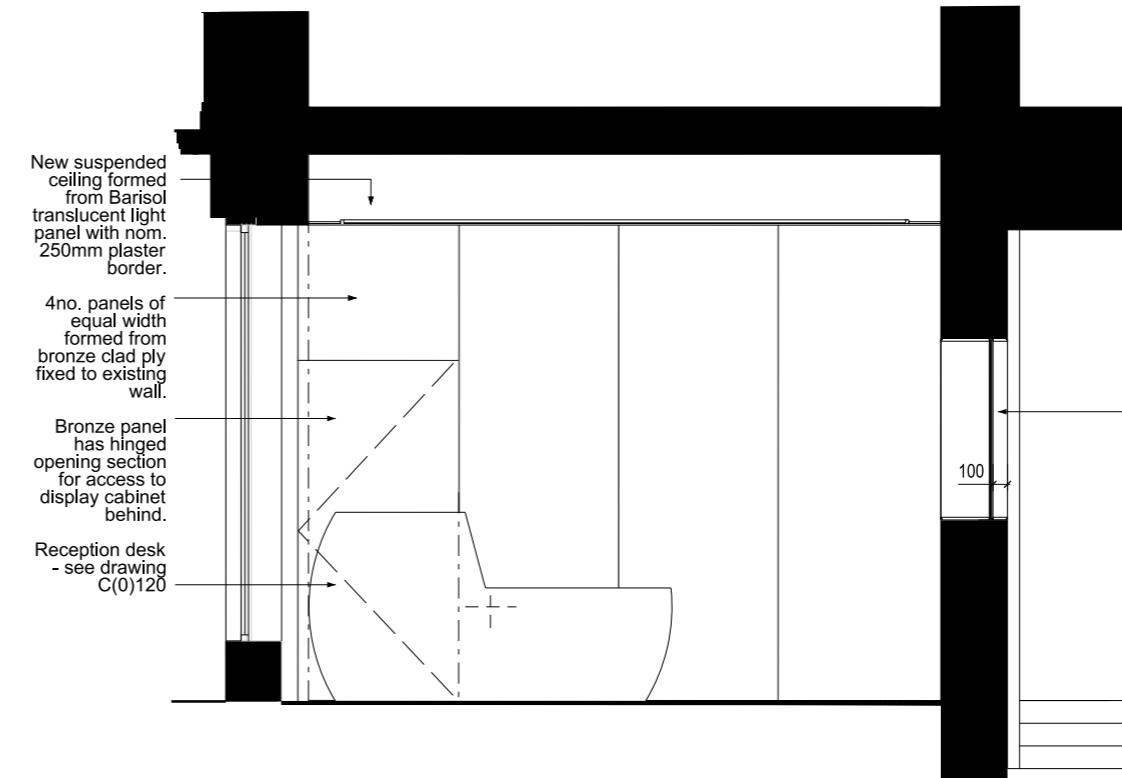


SECTION B



SECTION C

- Existing slate lining to head and jambs to door removed and replaced by new lining formed from bronze sheet on WBP ply on framing to give opening size to approximately match the existing and to suit new door.
- New door to be automatic sliding door with bronze finished frame.
- Call point & swipe card sensor
- Continuous LED light strip runs all round opening between door frame and bronze lining.
- Black metal strip foot wiper in matwell to recess



SECTION D

- New suspended ceiling formed from Barisol translucent light panel with nom. 250mm plaster border.
- 4no. panels of equal width formed from bronze clad ply fixed to existing wall.
- Bronze panel has hinged opening section for access to display cabinet behind.
- Reception desk - see drawing C(0)120

- Existing recess in wall extended to form opening into stairwell.
- Plaster made good locally. Opening lined with 25mm MDF to form frame for glazing to opening. MDF lining to have 12mm x 12mm recess all round both sides to form shadow gap and to be painted black.
- Glass to be safety glass to match ADN requirements for safety glass.

REV.	DESCRIPTION	DATE	DRN BY	CKD BY

PROJECT	Heals Refurbishment Phase 2	JOB No.	5354	DRAWING No.	C(0)101	REVISION	5354
TITLE	Proposed Office Reception Sections	SCALE	1:50@A3	DRAWN BY	AR	CHECKED BY	AM
CLIENT	Threadneedle Property Investments Ltd	STATUS	Planning	DATE	June 2014		

jmarchitects

2nd Floor
Threeways House
40-44 Clipstone Street
London
W1W 5DW
T: 0207 580 5330
F: 0207 436 5348
lon@jmarchitects.net
www.jmarchitects.net