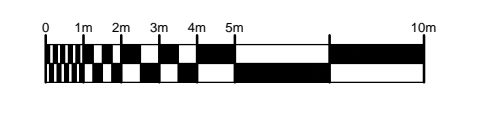
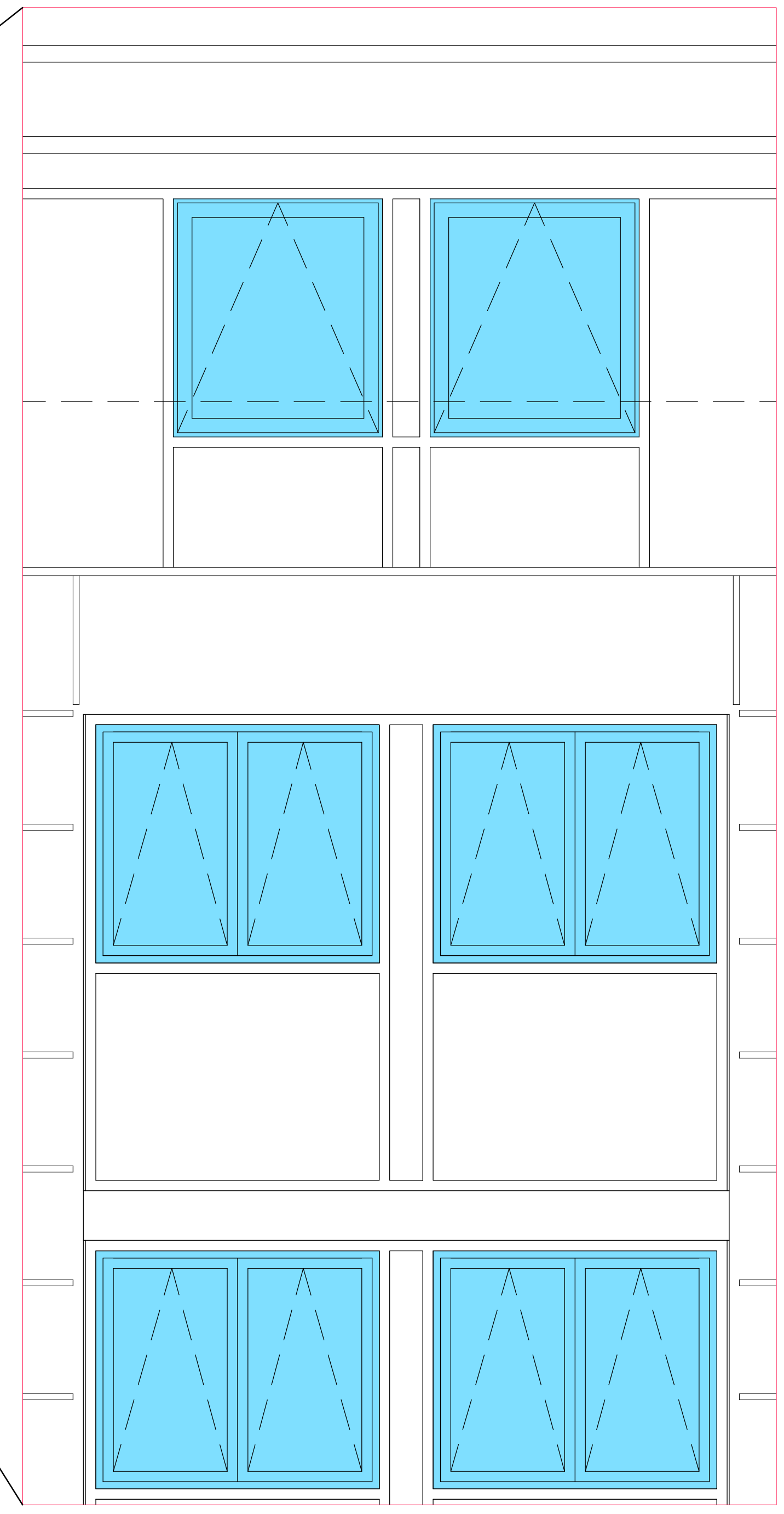




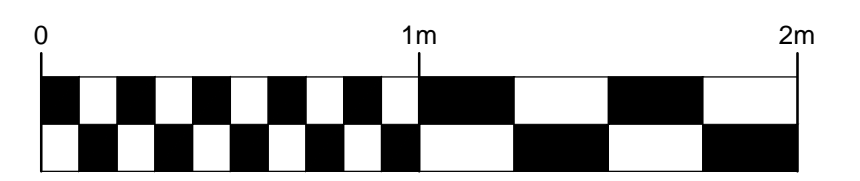
WICKLOW STREET ELEVATION



INDICATES WINDOWS TO BE REPLACED



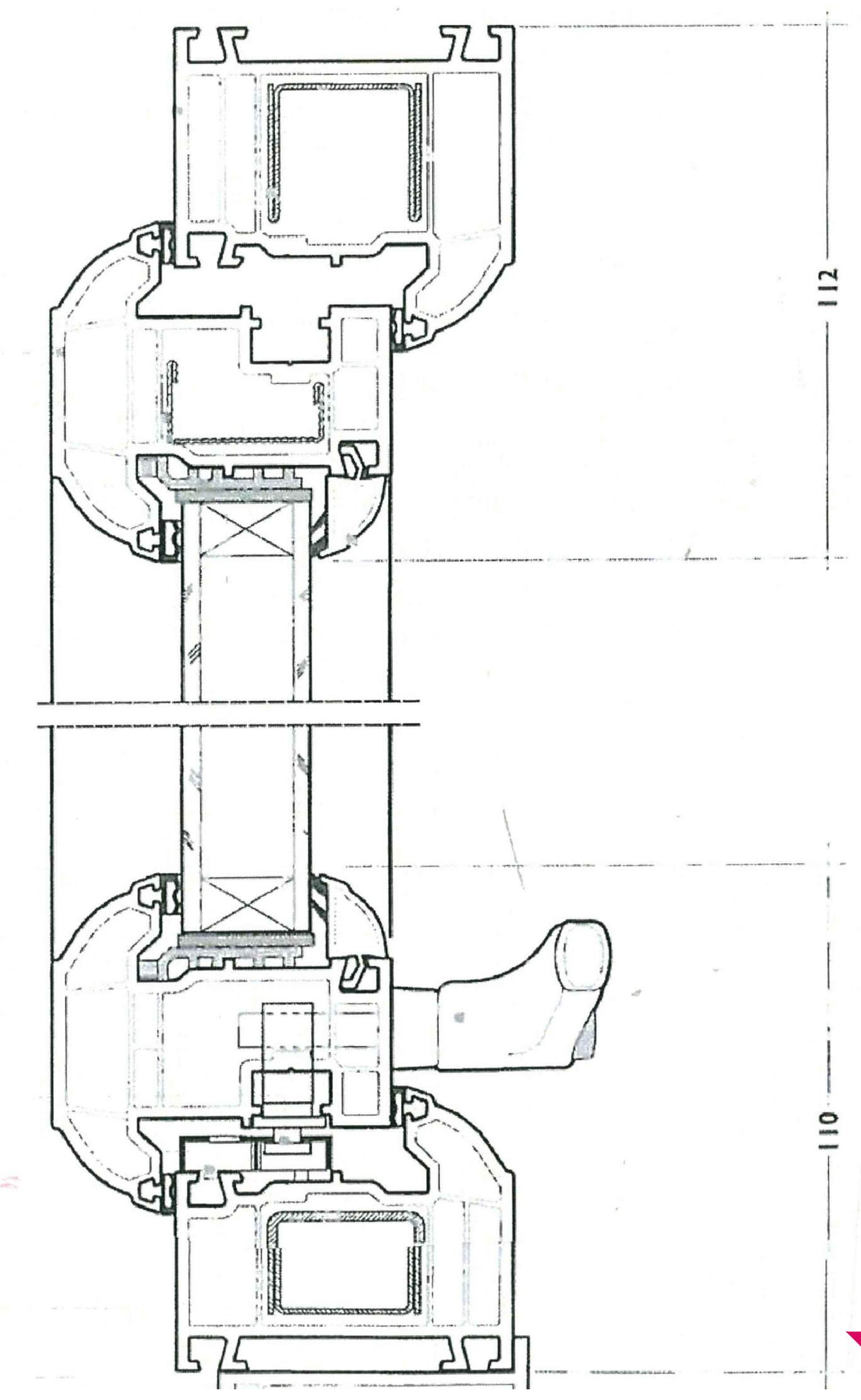
WINDOW ELEVATION @ 1:20



ST.CHADS PLACE ELEVATION

- 70070 OUTER FRAME
- \*12243 REINFORCEMENT
- 70050 VENT
- \*12241 REINFORCEMENT
- 7876 GLAZING BRIDGE
- 3331-3335 GLAZING PACKER
- 2389 GLAZING BEAD
- HANDLE MUSHROOM ESPAG./SHOOTBOLT CKING OR NON-LOCKING OPTION
- 7471/77 ESPAG.
- 7337 KEEP
- 7717 CILL
- \*12558 RCM REINFORCEMENT

CILL DETAIL @ 1:1



JWA Architects Limited  
Robert Tresham House,  
Clipston, Market Harborough,  
Leicestershire LE16 9RZ  
T +44 (0) 1858 525343  
F +44 (0) 1858 525527  
E office@jwa-architects.co.uk  
W www.jwa-architects.co.uk

Client: TRAVELODGE

Project: TRAVELODGE KINGS CROSS  
356-364 GRAYS INN ROAD,  
KINGS CROSS, LONDON, WC1X 8BH

Drawing: WINDOW ELEVATION & CILL DETAIL

Purpose: PLANNING Date: 23.07.2014  
Scale: 1:200:20 @ A1 Drawn: DL  
Dwg. No: H8477 - 04 Revision: A