

Stanley Sidings Limited

Hawley School

Condition 19 - Waste Management Strategy

REP/AEB/001

Draft 1 | 21 July 2014

Draft

This report takes into account the particular instructions and requirements of our client.

It is not intended for and should not be relied upon by any third party and no responsibility is undertaken to any third party.

Job number 232890-01

Ove Arup & Partners Ltd
13 Fitzroy Street
London
W1T 4BQ
United Kingdom
www.arup.com

ARUP

Document Verification

ARUP

Job title		Hawley School		Job number	
				232890-01	
Document title		Condition 19 - Waste Management Strategy		File reference	
Document ref		REP/AEB/001			
Revision	Date	Filename	20140721 Hawley School Condition 19 Waste Management Report.docx		
Draft 1	21 Jul 2014	Description	First draft		
			Prepared by	Checked by	Approved by
		Name	Alan Beadle	Simon Johnson	Simon Johnson
		Signature			
		Filename			
		Description			
			Prepared by	Checked by	Approved by
		Name			
		Signature			
		Filename			
		Description			
			Prepared by	Checked by	Approved by
		Name			
		Signature			
		Filename			
		Description			
			Prepared by	Checked by	Approved by
		Name			
		Signature			
<div style="text-align: right;"> Issue Document Verification with Document <input checked="" type="checkbox"/> </div>					

Contents

	Page
1 Introduction	1
2 Waste	2
2.1 Waste Generation and Storage Requirements	2
3 Waste Management Strategy	4
3.1 Internal Waste Collection	4
3.2 Waste Collection	5
4 Summary	7

Tables

Table 1 Waste generation and storage Hawley School

Figures

Figure 1 Proposed school - Hawley Road elevation (source AHMM)

Figure 2 Waste store on Torbay Street

Figure 3 First floor waste collection routes

Figure 4 Ground floor waste collection routes

Figure 5 Long term lay-by Hawley Road

Figure 6 Location of temporary on-street loading bay Hawley Road

1 Introduction

This report sets out to address the requirement of condition 19 relating to outline planning application for the new Hawley School in the London Borough of Camden. This condition states that:

- *Before commencement of the development, details of the method of storage and waste removal (including recycled materials) shall be submitted to and approved in writing by the local planning authority and the approved method shall be thereafter implemented and maintained.*

The Hawley School is bounded to the north by the Hawley Road, to the south by the rail arches and Torbay Street to the west, as shown in Figure 1.



Figure 1 Proposed school - Hawley Road elevation (source AHMM)

The school has a gross area of 1,450m² split between ground and first floor accommodation for nursery, reception and primary age pupils. The school has spaces provided for 236 students and 25 full time staff.

The sections of this report set the following:-

- Section two considers the methodology for waste storage calculation
- Section three outlines the proposed waste management and collection strategies
- Section four summarises measures discussed to meet the requirements of condition 19

2 Waste

Waste generation and storage requirements have been determined with reference to the following publications:

- British Standard 5906:2005 Waste management in buildings – code of practice
- Camden Planning Guidance, Design, Chapter 10, Waste and Recycling Storage
- A guide to Developers of Commercial and Residential Premises in the London Borough of Camden, May 2005.

The main requirements are summarised below:

- Any route where wheeled bins are to be pushed should have a gradient less than 1:12, and include no steps or kerbs
- Waste contractors should not be required to carry bags or move bins to a refuse collection vehicle more than 20m (round trip)
- Waste rooms should be located away from the main entrance to the building
- There should be no steps and projections at the entrance of the waste room
- The walls and roofs of the waste room should be formed of non-combustible and impervious material and have a fire resistance
- Waste rooms should have proper ventilation and wash down facilities (water pipe and drainage).

2.1 Waste Generation and Storage Requirements

The school will support approximately 236 school age pupils. Waste generated within the school will be a combination of paper and art work materials, office consumables and catering scraps from the school kitchen.

It is common practice within London boroughs (Lambeth, Hackney and Tower Hamlets) and to use the following to calculate the weekly (5 days) storage requirements for schools:-

- 1.5m³ waste storage for every 100 pupils; and
- 1.0m³ of waste recycling storage for every 100 pupils

The waste storage requirements for Hawley School are shown in Table 1.

Hawley Wharf School Waste Generation and Storage					
	Calculated Waste Requirements			Waste Storage Provided	
	Volume (m3)	No. 1,100 litre bins	No. 1,280 litre bins	Waste Bins Provided	Waste Area Provided
Refuse	3.5	3		3	7.5
Recycle	2.3		2	1	
Total	5.8	3	2	4	7.5

Table 1 Waste generation and storage Hawley School

A dedicated refuse store is located to the north west corner of the school, has been integrated into the west façade. It is located close to the kitchen servicing the main school hall as shown in Figure 2.

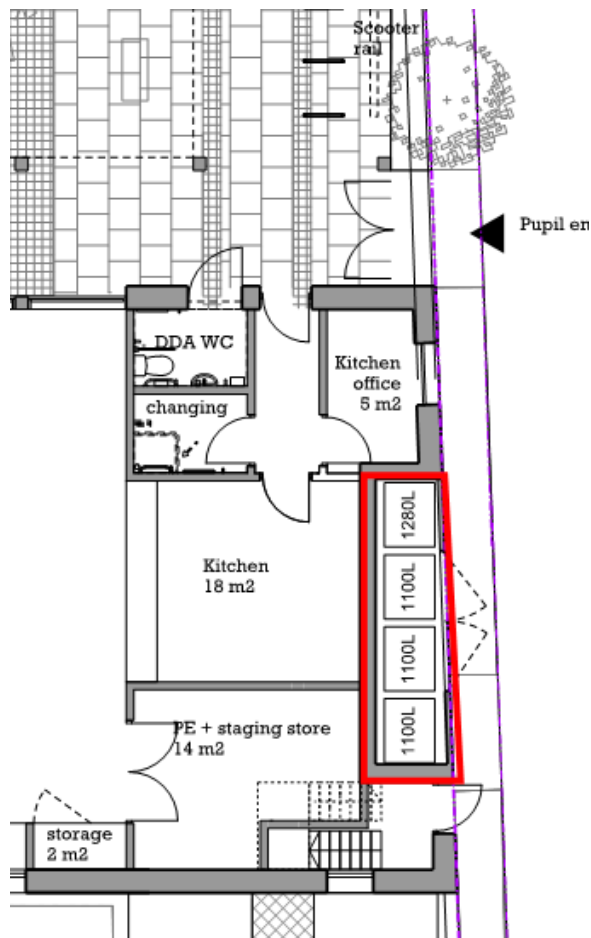


Figure 2 Waste store on Torbay Street

The waste store will hold the following waste bins:-

- 1 No. 1,100 litre bin for food waste
- 2 No. 1,100 litre bins for general refuse
- 1 No. 1,280 litre bin for dry mixed recyclables

The current waste provision has one bin for recyclable waste, rather than the two calculated for the school. The school management will monitor this waste and if deemed necessary arrange for a twice weekly waste collection.

To facilitate the movement of bins into and out of the waste store, doors or shutters will be provided along the full length of the waste store.

3 Waste Management Strategy

3.1 Internal Waste Collection

Segregation of waste will be encouraged within all areas of the school (classes, offices and kitchens). Recycling and refuse points will be located around the school. At the end of the day waste generated within the class rooms and offices will be collected by the cleaners. Figure 3 and Figure 4 show the internal waste collection routes from the upper and ground floors. They will take the bags of waste to the waste store located on Torbay Street.

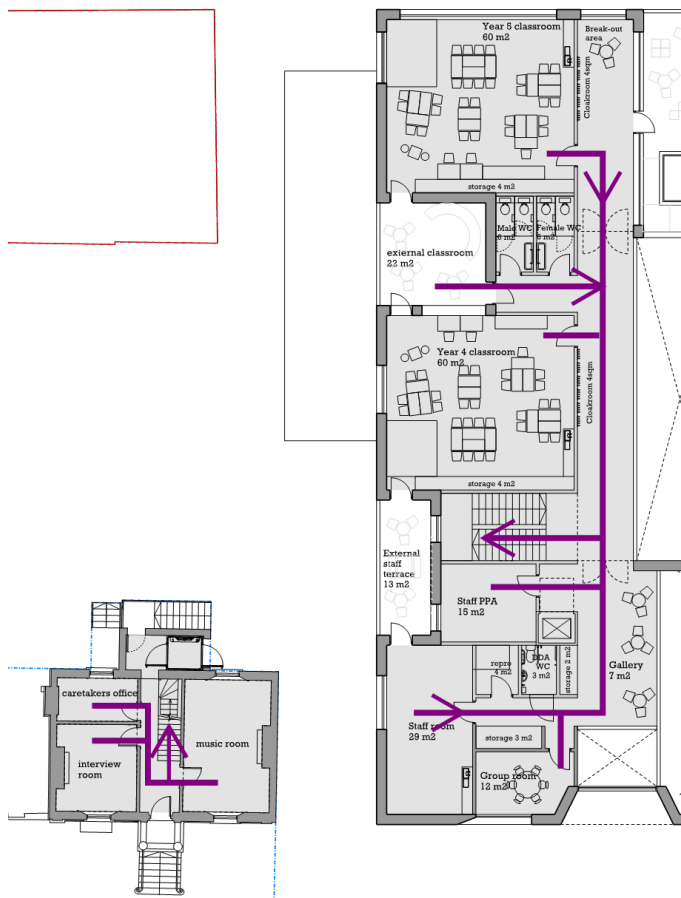


Figure 3 First floor waste collection routes

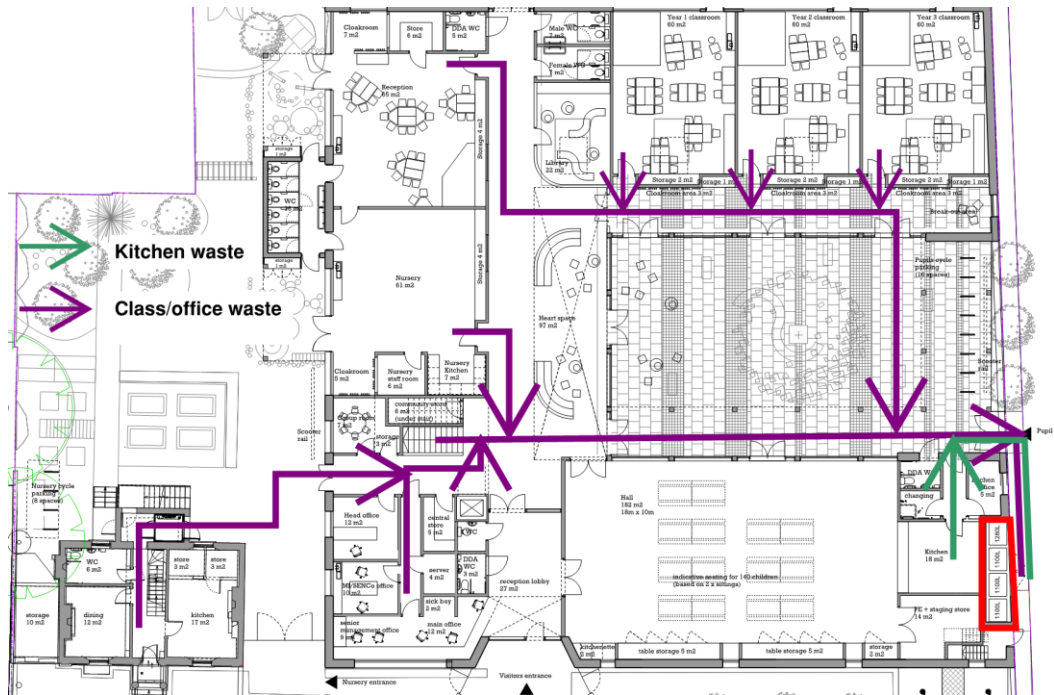


Figure 4 Ground floor waste collection routes

3.2 Waste Collection

3.2.1 Permanent Condition

As part of the Hawley Wharf development, an off-street loading bay will be provided to the west of the school. This will serve both the Hawley School and a new residential development as shown in Figure 5.



Figure 5 Long term lay-by Hawley Road

In the permanent condition waste bins will be emptied directly from waste store as the collection point will be less than 10m from the collection point.

3.2.2 Temporary Condition

However, until the adjacent site is constructed it is proposed to accommodate servicing associated with the school on-street by providing a loading bay on Hawley Road. This will enable the streetscape on Hawley Road to the west of the school to be retained until the neighbouring site is developed (the provision of an off-street loading bay would require the demolition of neighbouring buildings). The location of this temporary lay-by is shown in Figure 6.

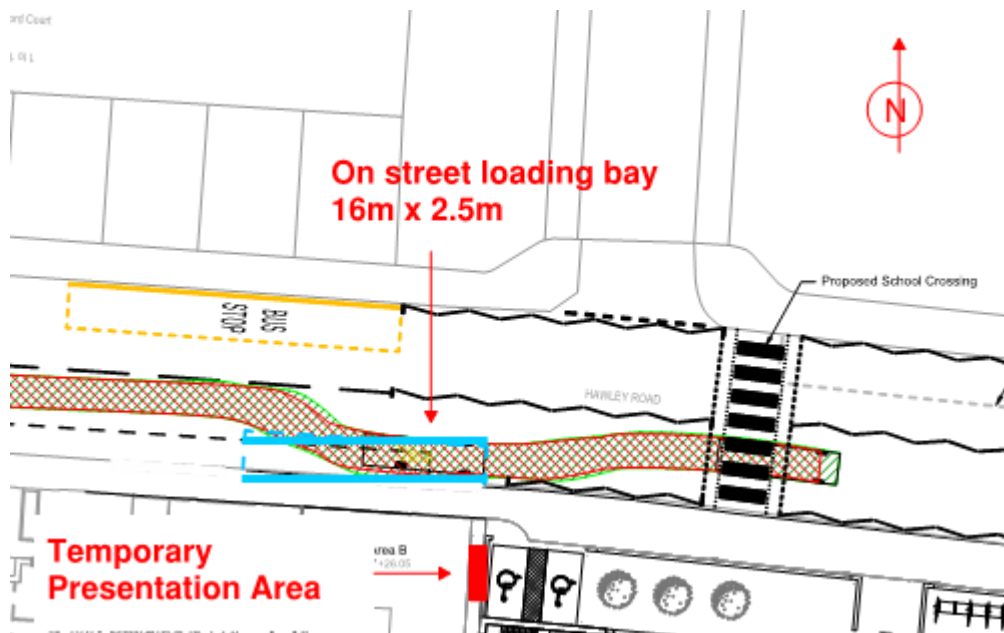


Figure 6 Location of temporary on-street loading bay Hawley Road

The Hawley School refuse store has been located on the western façade of the building which will facilitate refuse collection from the on-street loading bay and the future off-street loading area to the west. On a collection day, the school caretaker will move the bins to be emptied to a presentation area within 10m of the collection point. After the bins have been emptied by the refuse collection team, the caretaker will ensure all bins are returned to the waste store.

4 Summary

The waste management strategy described in this report:-

- Defined the requirements for the storage of refuse (2 x 1,100 litre bins), dry mixed recyclables (1 x 1,280 litre bin) and food waste (1 x 1,100 litre bin)
- Described the internal waste collection strategy
- Described the waste collection strategies for the temporary and permanent conditions by external waste contractors

In conclusion, the Hawley School will use a temporary loading bay on Hawley Road until a permanent off-street lay-by can be completed. The waste management strategy is expected to provide efficient waste storage and collection processes with negligible impact on the public highway.

Draft