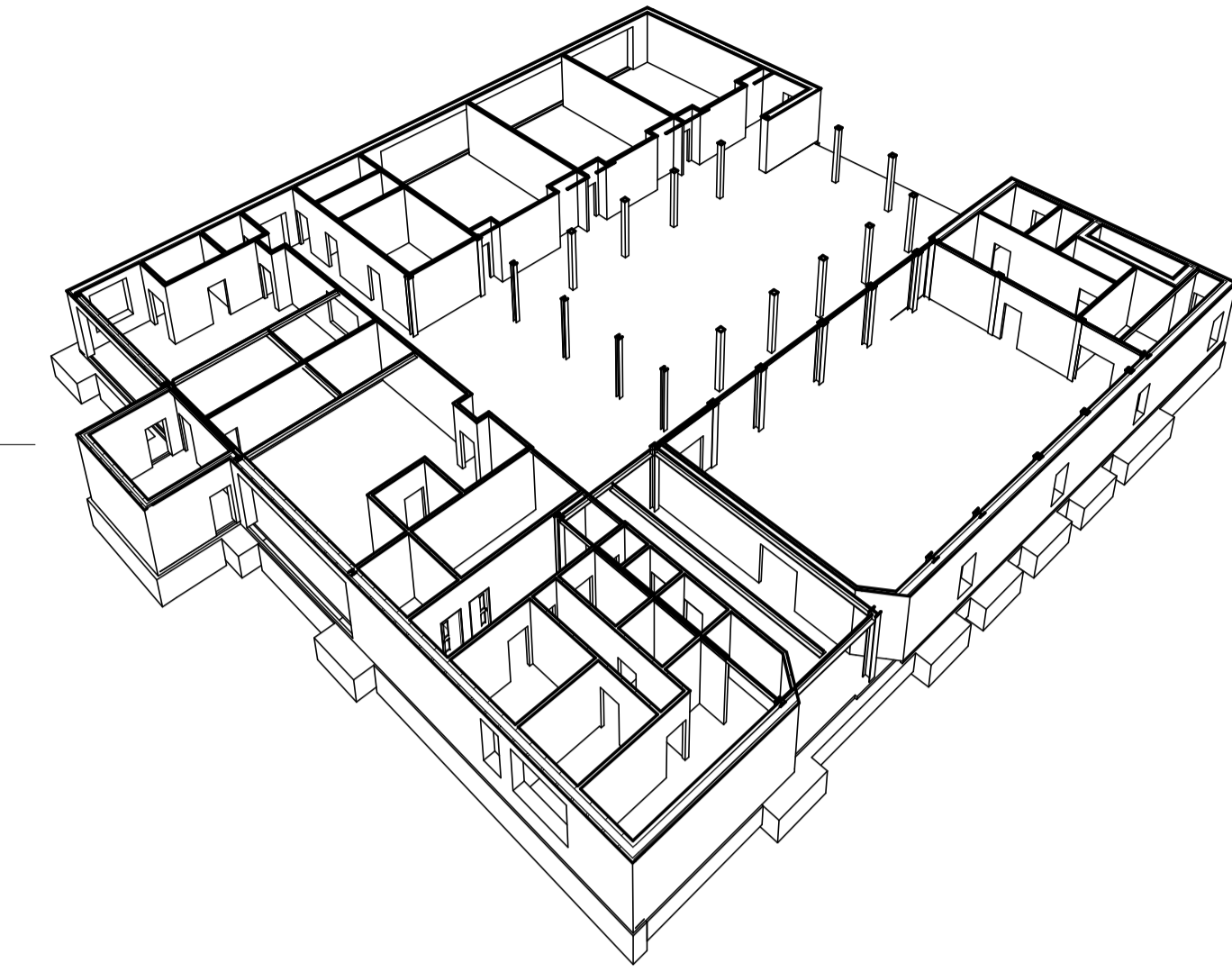


GROUND FLOOR PLAN
SCALE: 1 : 100

NOTE
ALL VERTICAL STRUCTURE SETTING OUT AS FLOOR BELOW
UNLESS NOTED OTHERWISE

NOTE
MEMBERS INDICATED L1, L2 ETC ARE
REFERENCE TO LINTELS OVER



3D VIEW - GROUND FLOOR

LINTEL SCHEDULE

L1	250 x 150 x 10 RHS WITH ANCON OPTIMA 10 SYSTEM BRACKETS @ 500 C/C
L2	CATNIC BSD100 (100 WIDE)
L3	CATNIC BSD100 (140 WIDE)
L4	203 x 133 x 30 UB
L5	CATNIC C4 90/100

WALL SCHEDULE

REFERENCE	TYPE
W01	102 BRICK & 140 BLOCK WIDE WITH 237.5 CAVITY
W02	102 BRICK & 140 BLOCK WITH 100 CAVITY
W03	Blockwork 100 (10N)
W04	Blockwork 140 (10N)
W05	BRICK PARAPET WALL

STRUCTURAL COLUMN SCHEDULE

REFERENCE	SIZE
C1	254x254x73 UC
C2	203x203x46 UC
C3	250x250 TIMBER
C4	305x305x97 UC
C5	250x250x10.0 SHS

STRUCTURAL STEEL BEAM SCHEDULE

REFERENCE	SIZE
SB01	203x133x25 UB
SB02	203x203x46 UC
SB03	305x305x97 UC
SB04	305x305x137 UC
SB05	305x305x198 UC

- Notes**
- ALL DIMENSIONS ARE IN MILLIMETRES AND LEVELS IN METRES.
 - THIS DRAWING TO BE READ IN CONJUNCTION WITH RELEVANT ARCHITECT'S AND ENGINEER'S DRAWINGS AND SPECIFICATIONS.
 - THIS DRAWING HAS BEEN PRODUCED ELECTRONICALLY AND MAY HAVE BEEN PHOTO REDUCED OR ENLARGED WHEN COPIED. HENCE, DO NOT RELY ON ANY SCALES QUOTED. WORK ONLY TO FIGURED DIMENSIONS (DO NOT SCALE). ALL DIMENSIONS TO BE CHECKED ON SITE. ANY ERRORS OR OMISSIONS TO BE REPORTED TO THE ENGINEER IMMEDIATELY.
 - ALL INTERNAL BLOCKWORK TO BE 10N.
 - ALLOW FOR MOVEMENT JOINT APPROX. 6m c/c FOR BLOCKWORK.
 - ALLOW FOR WIND POST ON EXTERNAL MASONRY ELEVATIONS APPROX. 3m c/c.
 - ALLOW FOR SAW CUT JOINT IN GROUND FLOOR SLAB APPROX. 5m c/c WITH 5m c/c CONSTRUCTION JOINTS.

C.D.M.	
SIGNIFICANT RISKS AND HAZARDS: POSSIBLE HEAVE SUBJECT TO S.I.	
KEY DESIGN DECISIONS TO REDUCE OR ELIMINATE HAZARDS:	

Rev.	Date	By	Details Of Revision
P3	21.07.14	RDK	STAGE D ISSUE
P2	11.07.14	ADF	REVISED FOR STAGE D
P1	12/11/13	AJH	ISSUED FOR INFORMATION

Client
STANLEY SIDINGS LTD

Project
HAWLEY PRIMARY SCHOOL

Title
GROUND FLOOR PLAN

Walsh Associates
Consulting Civil & Structural Engineers
32 Lafone Street, London, SE1 2LX
Tel: +44 (0)20 7889 6800
Fax: +44 (0)20 7889 6801
E-mail: london@walshgroup.eu.com

Walsh Group

Status
STAGE D

Drawn: AJH
Date: 11/11/13
Eng: PM
Chk: PM
App'd: PM

File Ref.	Actual Dimension = 80mm
Drawing No.	2765.1/100
Rev.	P3

P:\Projects\2765\2765.1\Drawings\Current\Revit\Modelling\2765.1_HAWLEY_SCHOOL_2014.rvt