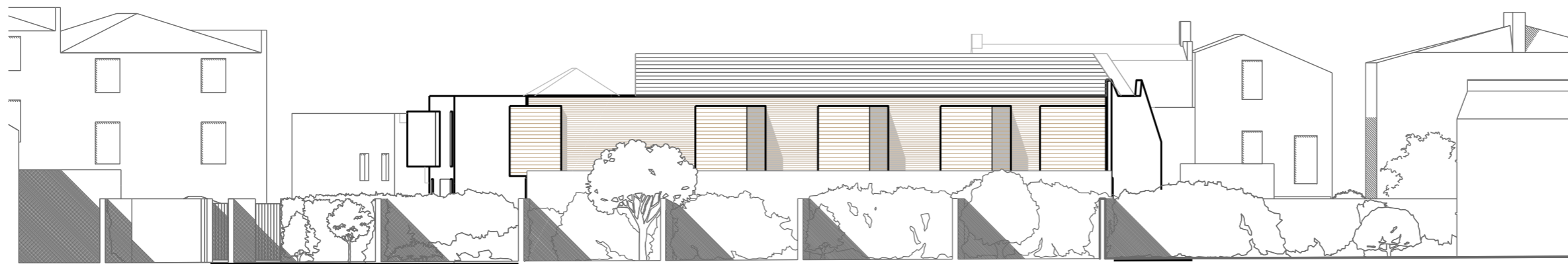
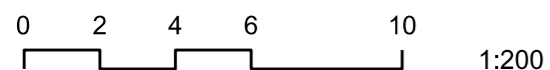


PROPOSED REAR ELEVATION THROUGH WINTER GARDENS - 1:100 @ A3



PROPOSED REAR ELEVATION FROM GARDENS TO EVANGELIST ROAD - 1:200 @ A3

REVISION:
 A 23.07.2014 Screen added to balcony of flat 2
 B 28.07.2014 Note on previous application amended



1-8 COLLEGE YARD, NW5 1NX, LONDON
Proposed North East Rear Elevation
 PLANNING APPLICATION JULY 2014

G M L Architects
 UNIT 3, 1-4 Christina Street, London, EC2A 4PA
 Tel: 020 7729 9595 Fax: 020 7729 1801 info@gmlarchitects.co.uk
 SCALE: 1:100 & 1:200@A3
 ISSUED FOR: PLANNING
 FIRST ISSUED: 11/07/2014 **4129/P/021 B**