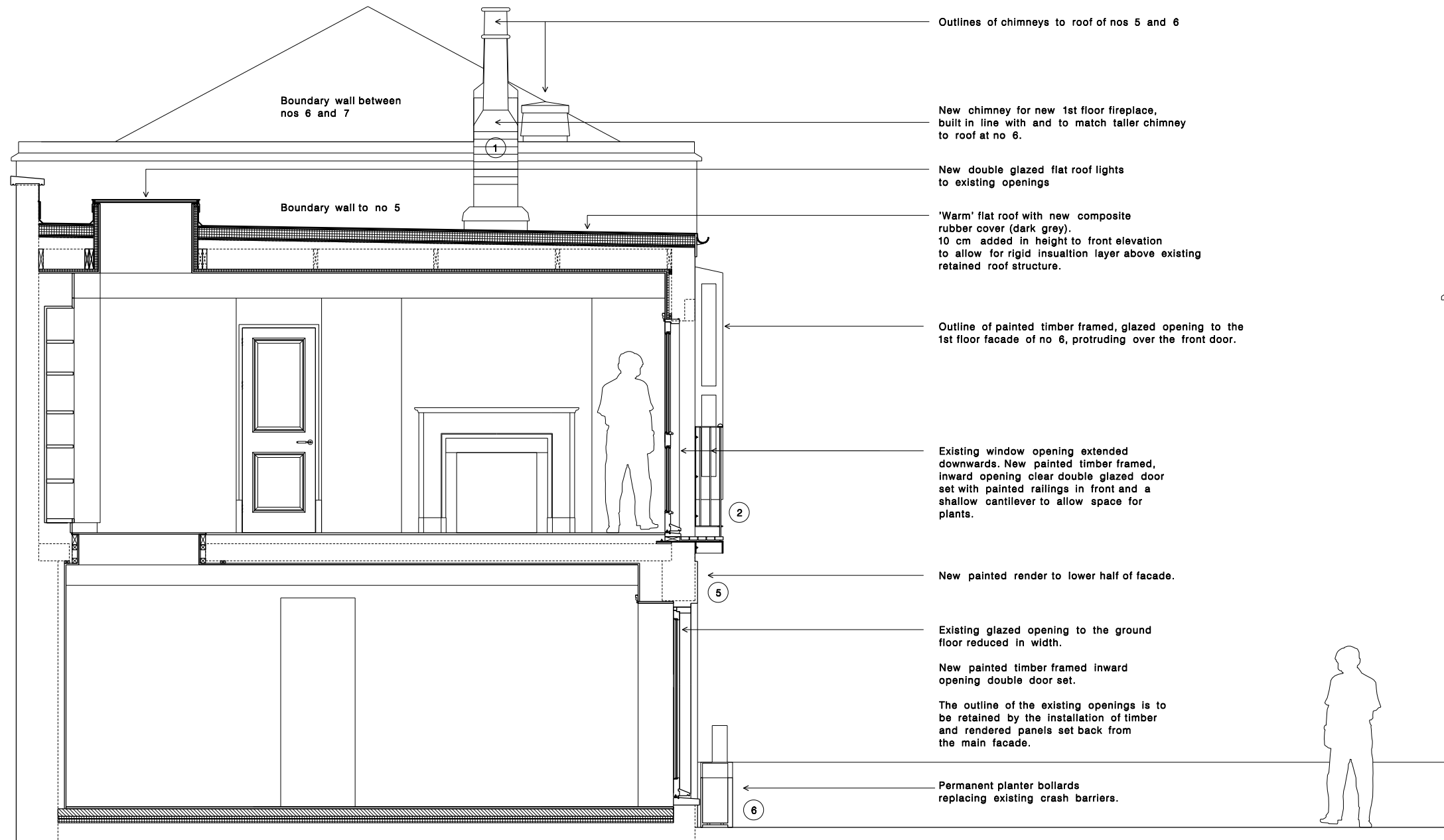


KEY TO NUMBERED MATERIALS:

- ① Terracotta and brick chimney.
- ② Galvanised rod balustrade with a painted finish. Painted steel angle base.
- ③ Painted timber panel. Set back to retain outline of existing opening to facade.
- ④ Painted rendered panel. Set back to retain outline of existing opening to facade.
- ⑤ Painted render to lower half of main facade.
- ⑥ Galvanised steel planter bollard with a powder-coated paint finish.



Outlines of chimneys to roof of nos 5 and 6

Boundary wall between nos 6 and 7

Boundary wall to no 5

New chimney for new 1st floor fireplace, built in line with and to match taller chimney to roof at no 6.

New double glazed flat roof lights to existing openings

'Warm' flat roof with new composite rubber cover (dark grey). 10 cm added in height to front elevation to allow for rigid insulation layer above existing retained roof structure.

Outline of painted timber framed, glazed opening to the 1st floor facade of no 6, protruding over the front door.

Existing window opening extended downwards. New painted timber framed, inward opening clear double glazed door set with painted railings in front and a shallow cantilever to allow space for plants.

New painted render to lower half of facade.

Existing glazed opening to the ground floor reduced in width.

New painted timber framed inward opening double door set.

The outline of the existing openings is to be retained by the installation of timber and rendered panels set back from the main facade.

Permanent planter bollards replacing existing crash barriers.

No 14

3 St George's Mews

St George's Mews

No 15

PROPOSED SECTION AA

04.08.2014
Rev Date
PLANNING
Kristensen Architects Unit 2 Epoot Court 31 Kilburn Lane London W10 4AE
3 ST GEORGE'S MEWS LONDON NW1 8XE
Proposed cross section AA through mews street
1:50 at A3

219-00-203