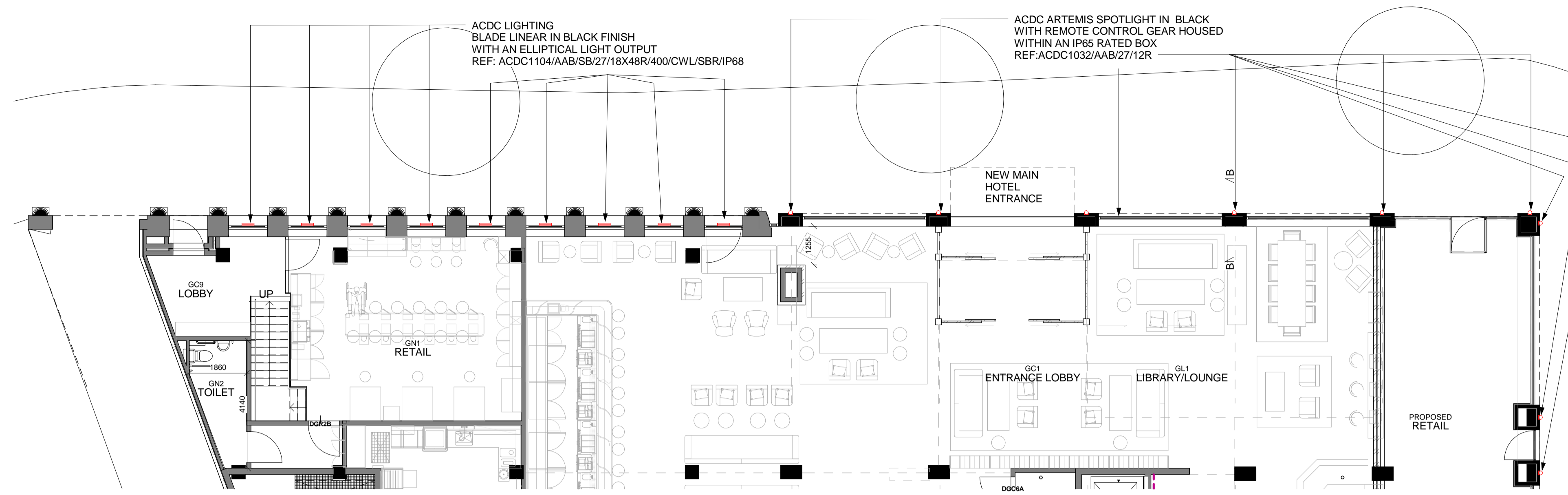


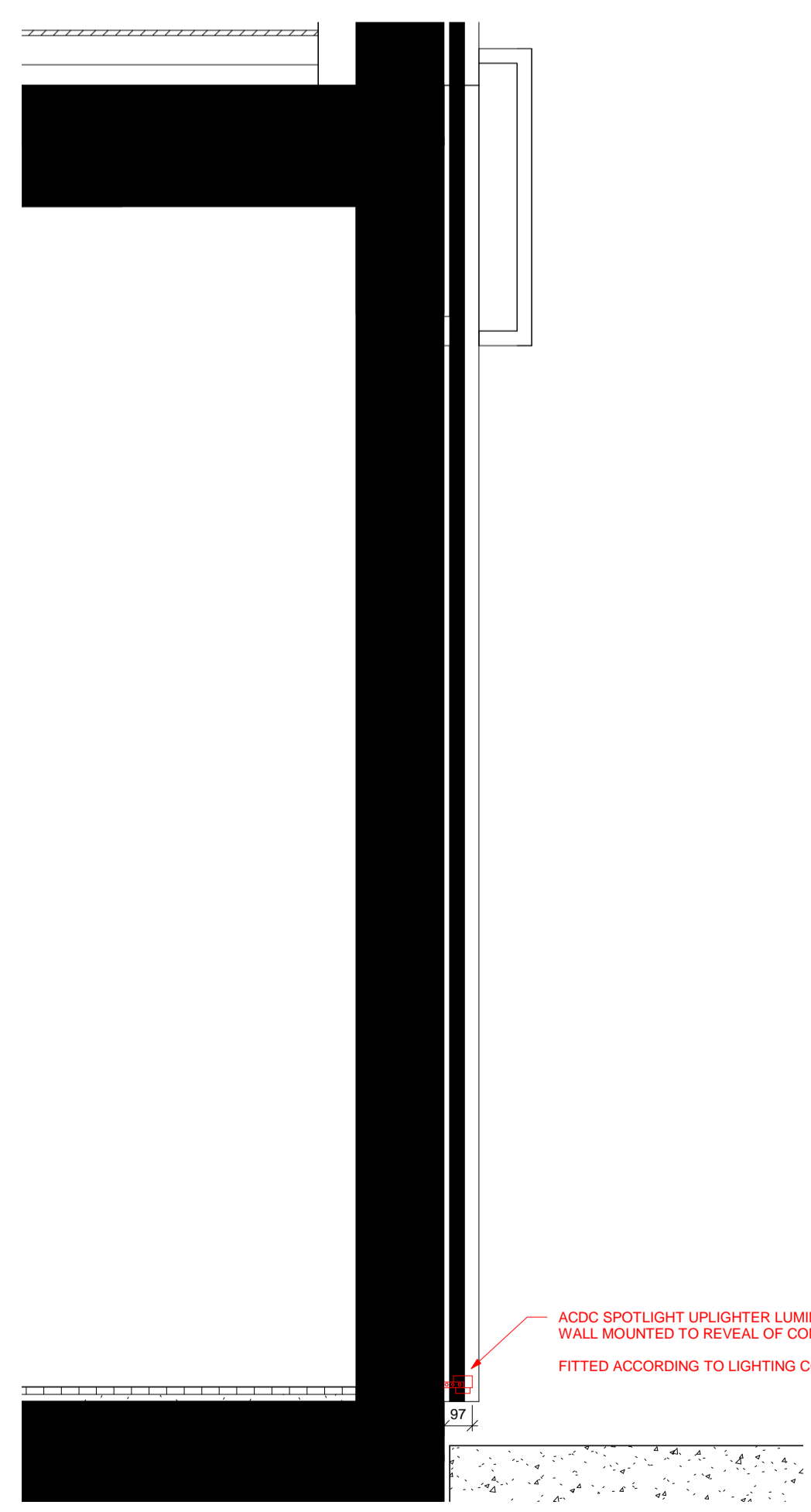
Copy of EXTERIOR LIGHTING - SECTION AA KEY PLAN  
1 : 500



Copy of EXTERIOR LIGHTING - GROUND FLOOR PLAN  
1 : 100

Responsibility is not accepted for errors made by others in scaling from this drawing. All construction information should be taken from figured dimensions only.

**A1** Original Sheet Size



EXTERIOR LIGHTING - MODERN FACADE - SECTION BB  
1 : 20

date	rev	name	chk	note
08/08/2014	A	NBH	AB	Information Added

© Stride Treglown Limited 2012.

**Stride Treglown**

Architecture Town Planning Interior Design Building Surveying Landscape Design Graphic Design  
3 Cosser Street, London, SE1 7BU  
T 020 7401 0700 F 020 7401 0701 www.stridetreglown.co.uk

PROJECT  
HOXTON HOTEL HOLBORN  
199-206 HIGH HOLBORN  
LONDON WC1V 7BU

DRAWING TITLE  
EXTERIOR LIGHTING - MODERN FACADE  
- SECTION BB (PROPOSED)

STATUS  
**PLANNING**

SCALE DATE DRAWN BY CHECKED BY  
As indicated 07/08/2014 NBH AB

PROJECT NUMBER DRAWING NUMBER REVISION  
20918 AP(00)9143 A

C:\Revit\Local\20918\_HH\_CONSTRUCTION\_2013\_Nik\_Hogarth.rvt 08/08/2014 16:22:59