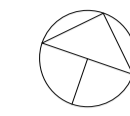


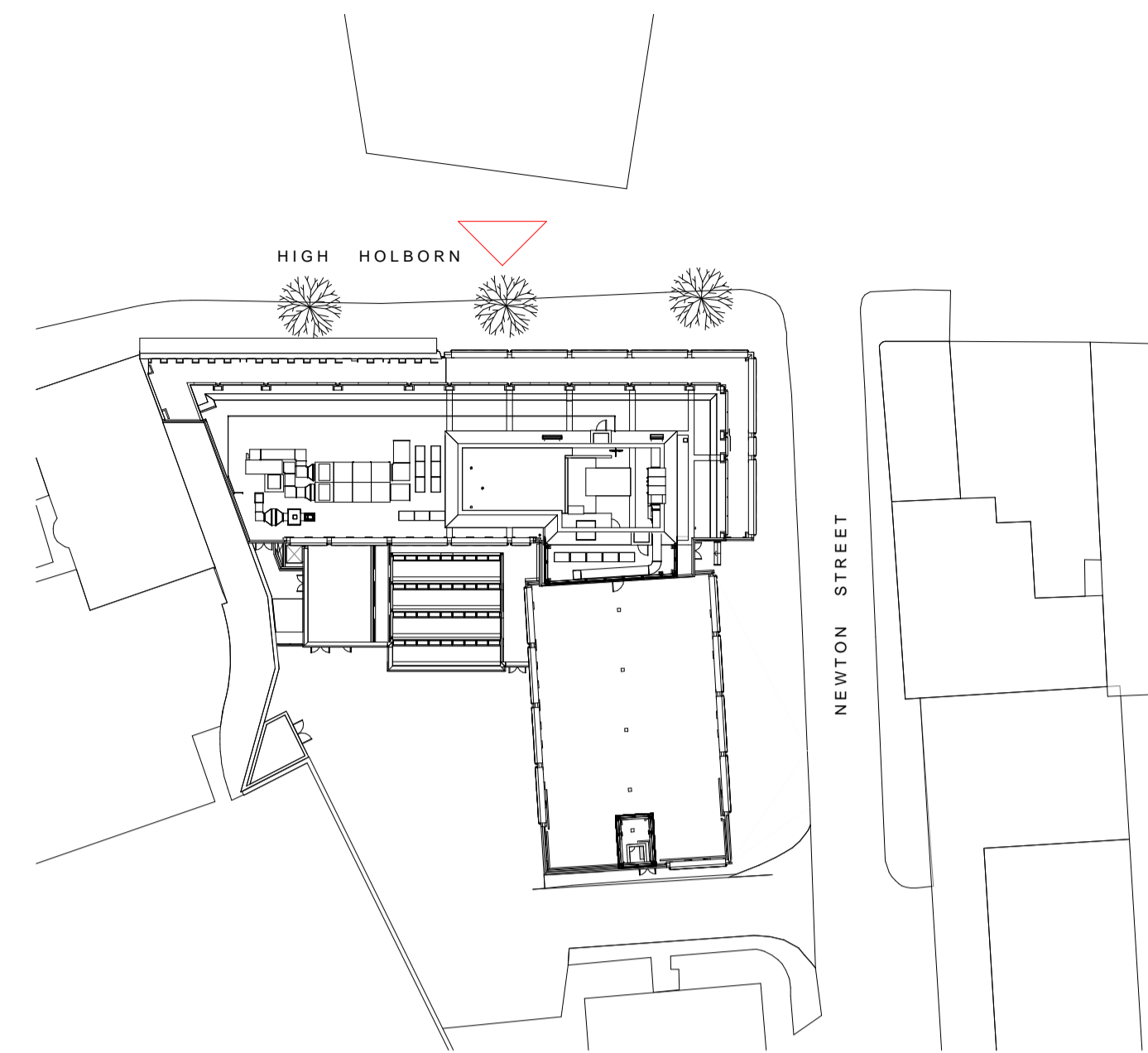
Responsibility is not accepted for errors made by others in scaling from this drawing. All construction information should be taken from figured dimensions only.

0mm 50mm 100mm

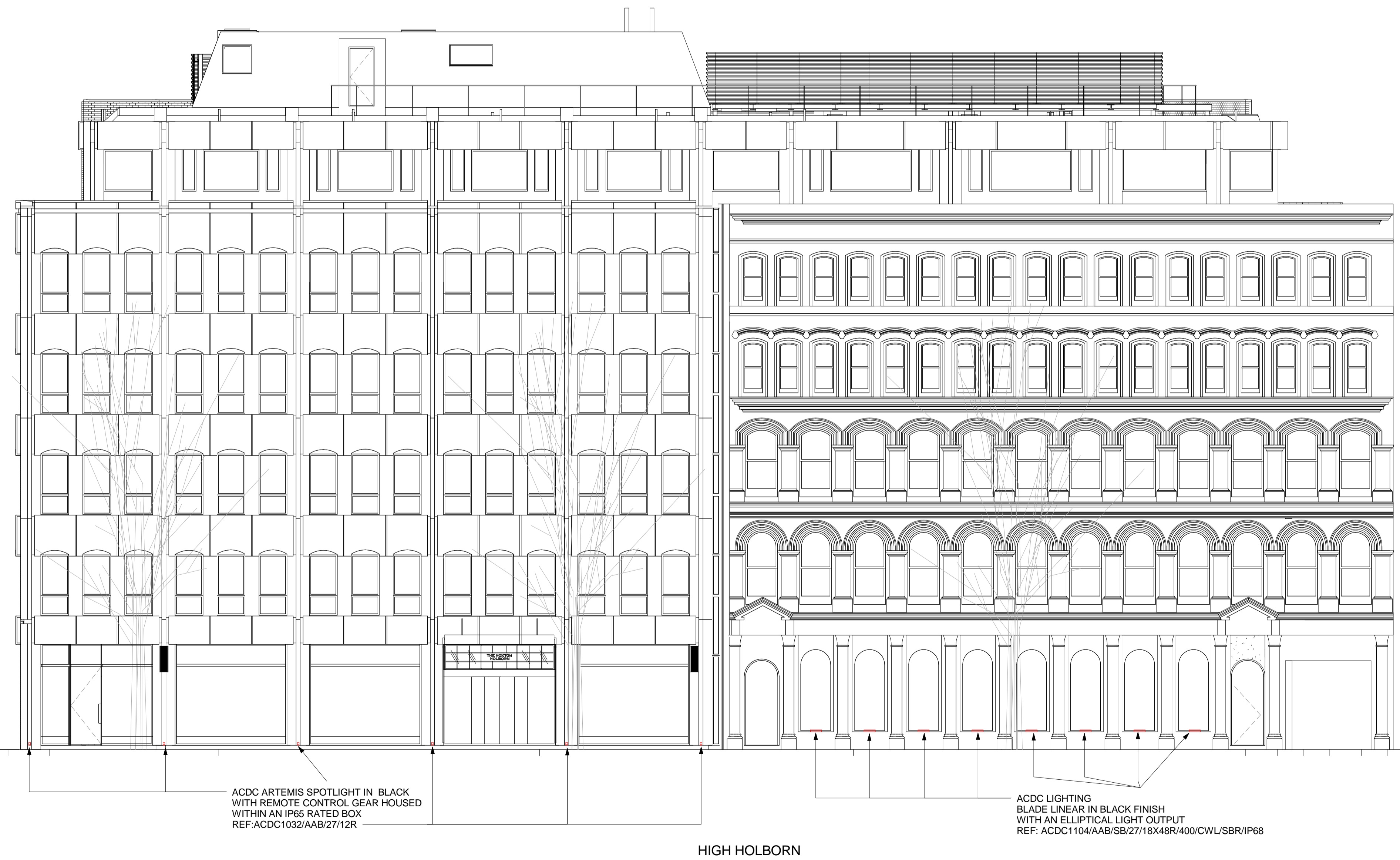
A1 Original Sheet Size



PLEASE REFER RELEVANT PRODUCT SPECIFICATIONS FOR LUMINAIRE DETAILS



EXTERIOR LIGHTING - NORTH ELEV KEY PLAN
1 : 500



EXTERIOR LIGHTING - NORTH ELEVATION (PROPOSED)
1 : 100

date	rev	name	chk	note
08/08/2014	A	NBH	AB	Minor Amendments

© Stride Treglown Limited 2012.

Stride Treglown

Architecture Town Planning Interior Design Building Surveying Landscape Design Graphic Design
3 Cosser Street, London, SE1 7BU
T 020 7401 0700 F 020 7401 0701 www.stridetreglown.co.uk

PROJECT
HOXTON HOTEL HOLBORN
199-206 HIGH HOLBORN
LONDON WC1V 7BU

DRAWING TITLE
EXTERIOR LIGHTING - NORTH ELEVATION (PROPOSED)

STATUS
PLANNING

SCALE	DATE	DRAWN BY	CHECKED BY
As indicated	07/08/2014	NBH	AB
PROJECT NUMBER	DRAWING NUMBER	REVISION	
20918	AP(00)9141	A	

C:\Revl\Local\20918_HH_CONSTRUCTION_2013_Nik_Hogarth.rvt