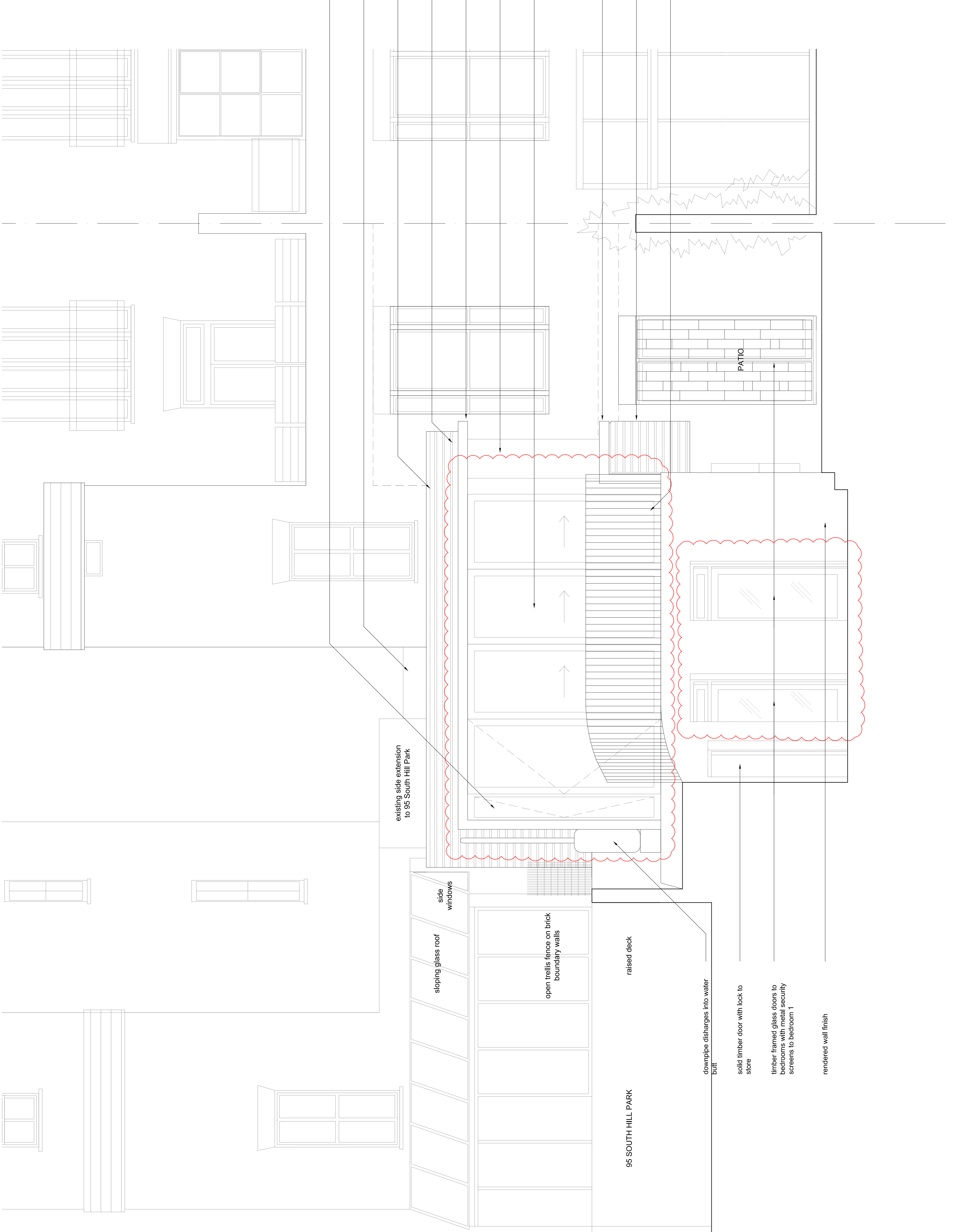


NOTES

DO NOT SCALE FROM THIS DRAWING

TENDER

ALL MEASUREMENTS TO BE VERIFIED ON SITE BY CONTRACTOR / SUB-CONTRACTOR  
TO BE READ IN CONJUNCTION WITH SPECIFICATION



timber ventilation hatch

line of parapet above front entrance

stainless steel capping

ship lapped timber cladding

finish to canopy tbc

fixed hung double glazed unit - refer to detail drawing

timber framed glazed sliding folding doors with side hung door at end

finish to window cill tbc

ship lapped timber cladding to window box

metal balustrade

existing side extension to 95 South Hill Park

sloping glass roof

side windows

open trellis fence on brick boundary walls

raised deck

95 SOUTH HILL PARK

downpipe discharges into water butt

solid timber door with lock to store

timber framed glass doors to bedrooms with metal security screens to bedroom 1

rendered wall finish

PATIO

Rev C Tender - doors revised 17.09.13  
Rev B Tender 28.06.13  
Rev A Preliminary 21.06.13

**Martin Evans Architects** ©  
18 Charlotte Road  
London EC2A 3PB  
tel 020 7729 2474

**JOB**  
97A SOUTH HILL PARK,  
LONDON,  
NW3 2SP

**TITLE**  
REAR ELEVATION

**DATE** 09.04.13  
**SCALE** 1:50@A3  
**DRAWN BY** SR  
**DRAWING NO.** SH87A-CON-GA-06C