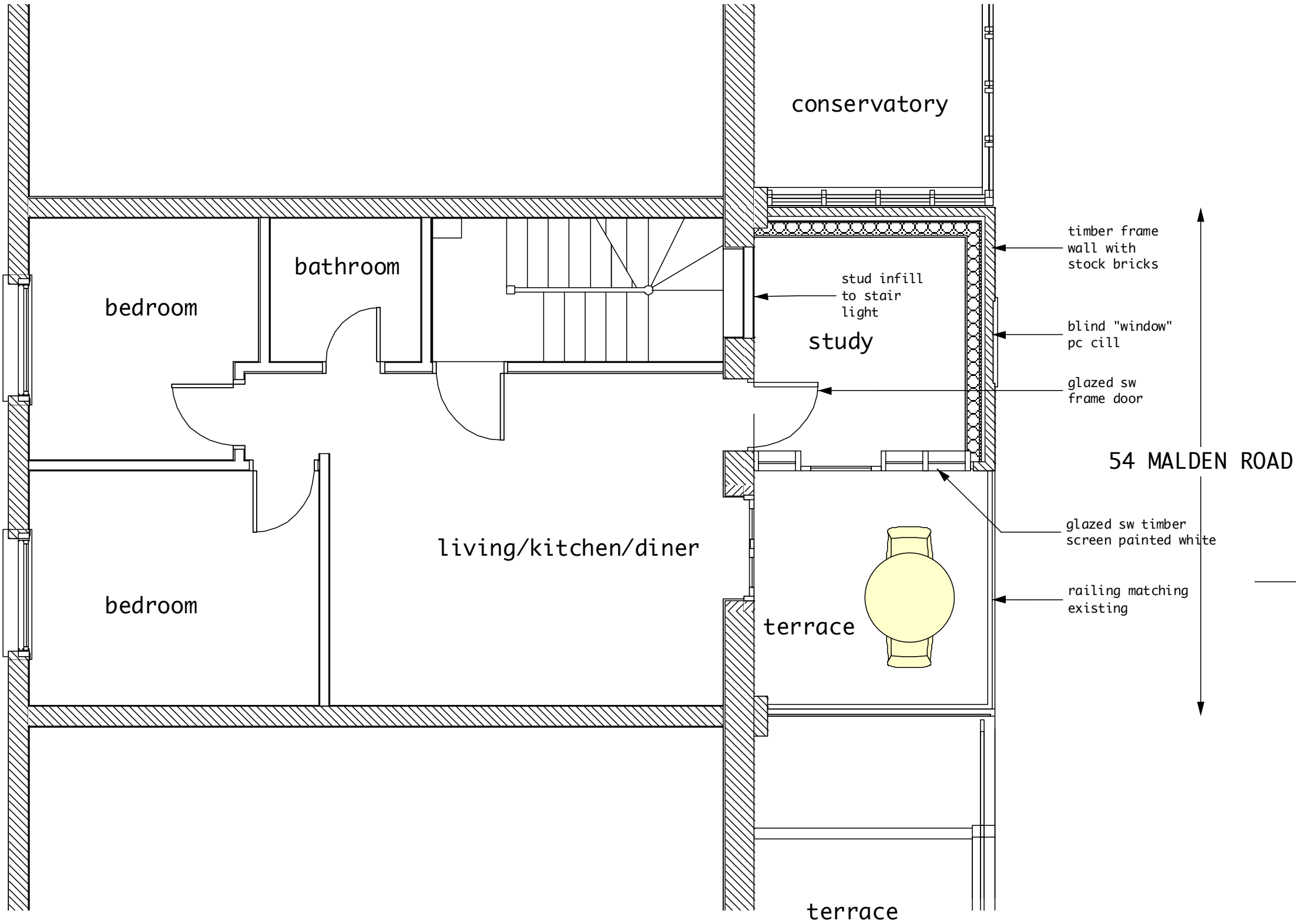


MALDEN ROAD

section BB



54 MALDEN ROAD

section BB

- 1 All dimensions to be checked on site
- 2 All discrepancies to be reported to architect or contract administrator immediately
- 3 Components to be fitted to the manufacturers requirements unless otherwise stated in writing
- 4 All demolitions to be confirmed by SE
- 5 All work to DS/SE requirements
- 6 All items supply & fit by contractor unless otherwise stated

copyright for this drawing belongs to Tom Young Architects and may not be assigned to any other person or organization without TYA's written agreement

REVISIONS  
A 12/8/14 revision following planner reaction

PROJECT TITLE  
54 Malden Road

JOB NUMBER	1311
STAGE	AD
SCALE	1: 50@A3
DATE	24/7/08
ISSUE	client
CAD-FILE	1311-AD.mcd

DISCIPLINE	A = architectural S = structural M = mechanical E = electrical
SERIES	0 cover sheet 1 site, roof, floor plans 2 elevations 3 sections 4 enlarged plans, elevations & sections 5 details 6 schedules 7 views 8 other

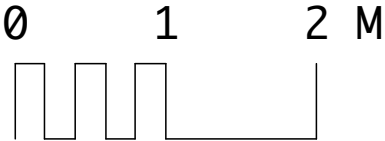
STAGE	feas = feasibility des = design pln = planning bc = bdg control tend = tender con = contract man = manual
-------	---

discipline	series	sheet	stage	rev
A	01	10	pln	a

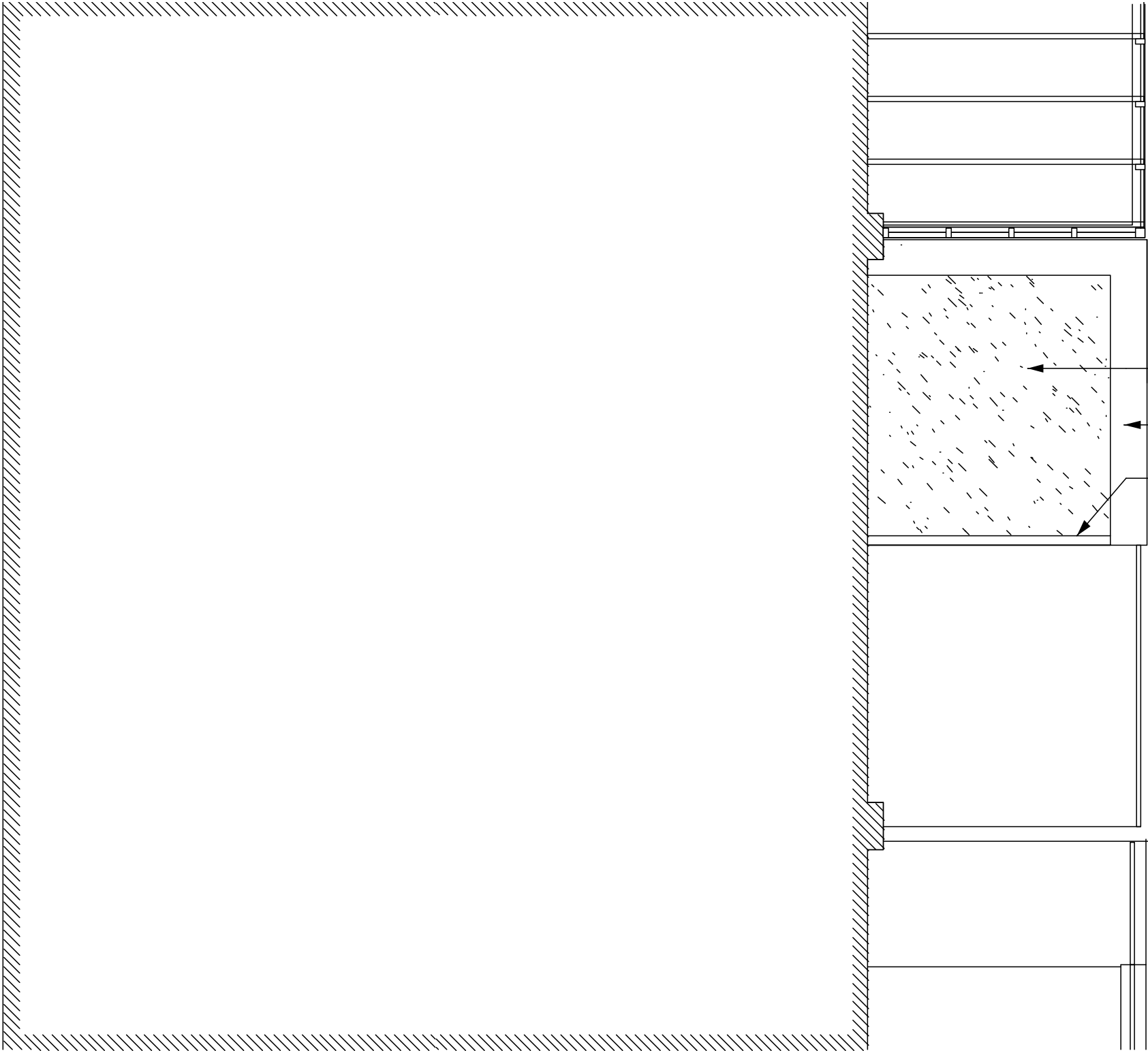
**TOM YOUNG ARCHITECTS**

19 Bassett St  
London NW5 4PG  
t\_020 7482 6150  
m\_07765 378 502  
e\_thdyoung@mac.com

proposed flat plan  
(rev A)



MALDEN ROAD



54 MALDEN ROAD



1 All dimensions to be checked on site 2 All discrepancies to be reported to architect or contract administrator immediately 3 Components to be fitted to the manufacturers requirements unless otherwise stated in writing 4 All demolitions to be confirmed by SE 5 All work to DS/SE requirements 6 All items supply & fit by contractor unless otherwise stated
copyright for this drawing belongs to Tom Young Architects and may not be assigned to any other person or organization without TYA's written agreement

REVISIONS		
A	13/8/14	revision following planner reaction

PROJECT TITLE	
54 Malden Road	
JOB NUMBER	1311
STAGE	AD
SCALE	1:50@A3
DATE	13/8/14
ISSUE	planner
CAD-FILE	1311-AD.mcd

DISCIPLINE	A = architectural S = structural M = mechanical E = electrical
SERIES	0 cover sheet 1 site, roof, floor plans 2 elevations 3 sections 4 enlarged plans, elevations & sections 5 details 6 schedules 7 views 8 other

STAGE	feas = feasibility des = design pin = planning bc = bdg control tend = tender con = contract man = manual
discipline	A
series	01
sheet	12
stage	pln
rev	a

**TOM YOUNG ARCHITECTS**

19 Basset t St  
London NW5 4PG  
t\_020 7482 6150  
m\_07765 378 502  
e\_thdyoung@mac.com

proposed roof plan  
(rev A)

discipline	series	sheet	stage	rev
A	01	12	pln	a



- 1 All dimensions to be checked on site
- 2 All discrepancies to be reported to architect or contract administrator immediately
- 3 Components to be fitted to the manufacturers requirements unless otherwise stated in writing
- 4 All demolitions to be confirmed by SE
- 5 All work to DS/SE requirements
- 6 All items supply & fit by contractor unless otherwise stated

copyright for this drawing belongs to  
Tom Young Architects and may not be assigned  
to any other person or organization without  
TYA's written agreement

REVISIONS  
A 12/8/14 revision following planner reaction

PROJECT TITLE  
54 Malden Road

JOB  
NUMBER  
**1311**

STAGE  
AD

SCALE  
1:100@A3

DATE  
24/7/08

ISSUE  
client

CAD-FILE  
1311-AD.mcd

DISCIPLINE  
A = architectural  
S = structural  
M = mechanical  
E = electrical

SERIES  
0 cover sheet  
1 site, roof, floor  
plans  
2 elevations  
3 sections  
4 enlarged plans,  
elevations &  
sections  
5 details  
6 schedules  
7 views  
8 other

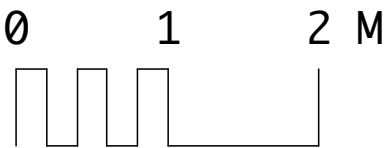
STAGE  
feas = feasibility  
des = design  
pln = planning  
bc = bdg control  
tend = tender  
con = contract  
man = manual

discipline	series	sheet	stage	rev
A	02	10	pln	a

**TOM YOUNG  
ARCHITECTS**

19 Basset St  
London NW5 4PG  
t\_020 7482 6150  
m\_07765 378 502  
e\_thdyoung@mac.com

proposed rear elevation  
with context (rev A)



- 1 All dimensions to be checked on site
- 2 All discrepancies to be reported to architect or contract administrator immediately
- 3 Components to be fitted to the manufacturers requirements unless otherwise stated in writing
- 4 All demolitions to be confirmed by SE
- 5 All work to DS/SE requirements
- 6 All items supply & fit by contractor unless otherwise stated

copyright for this drawing belongs to  
Tom Young Architects and may not be assigned  
to any other person or organization without  
TYA's written agreement

REVISIONS  
A 12/8/14 revision following planner reaction

PROJECT TITLE  
54 Malden Road

JOB  
NUMBER  
1311

STAGE  
AD

SCALE  
1:50@A3

DATE  
13/8/14

ISSUE  
planner

CAD-FILE  
1311-AD.mcd

DISCIPLINE  
A = architectural  
S = structural  
M = mechanical  
E = electrical

SERIES  
0 cover sheet  
1 site, roof, floor  
plans  
2 elevations  
3 sections  
4 enlarged plans,  
elevations &  
sections  
5 details  
6 schedules  
7 views  
8 other

STAGE  
feas = feasibility  
des = design  
pln = planning  
bc = bldg control  
tend = tender  
con = contract  
man = manual

discipline  
A

series  
02

sheet  
11

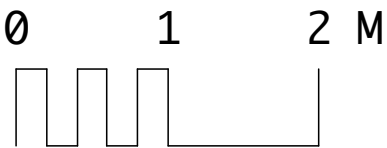
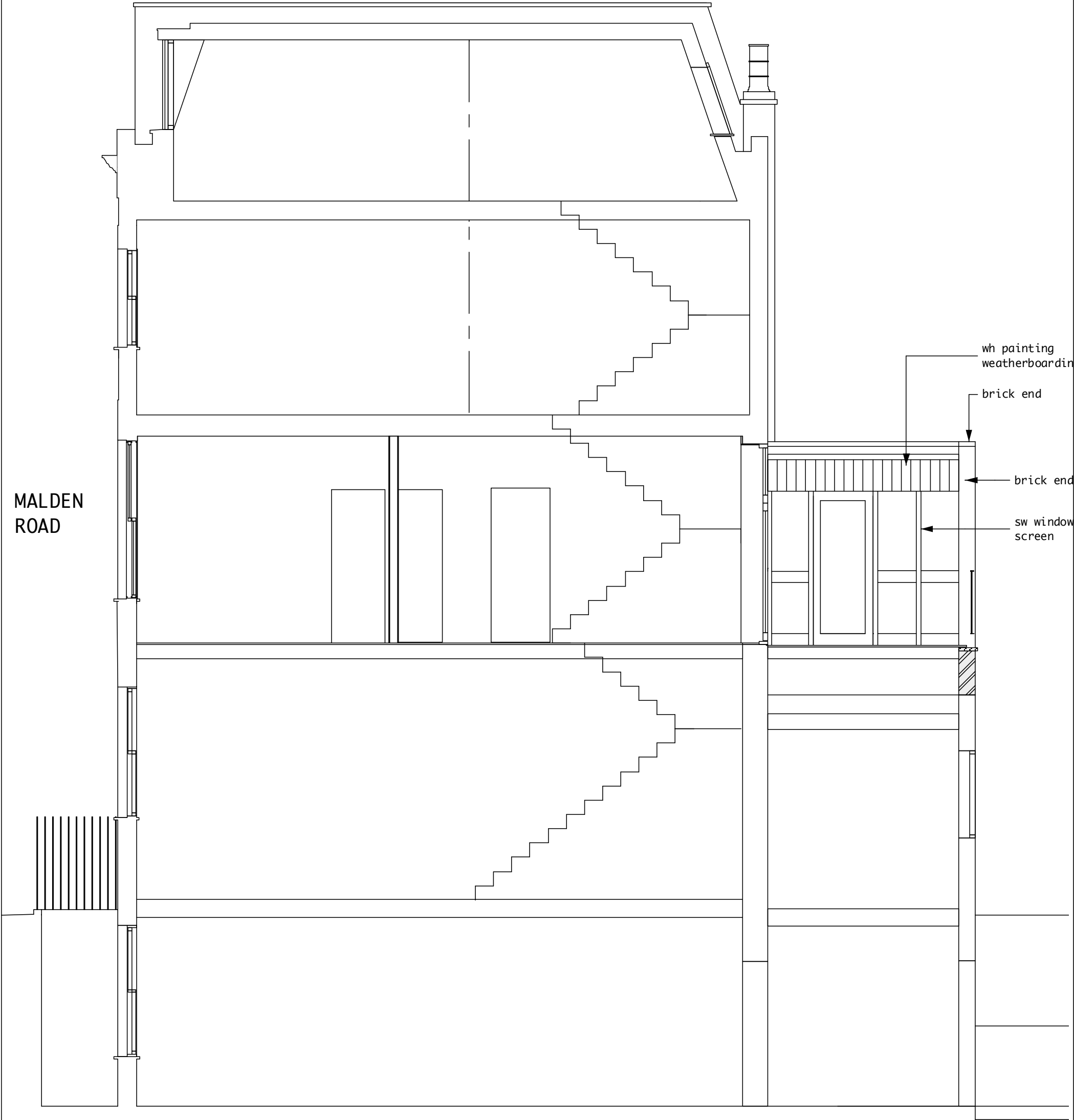
stage  
pln

rev  
a

**TOM YOUNG  
ARCHITECTS**

19 Basset St  
London NW5 4PG  
t\_020 7482 6150  
m\_07765 378 502  
e\_thdyoung@mac.com

proposed rear elevation  
without context (rev A)



<div>1 All dimensions to be checked on site</div> <div>2 All discrepancies to be reported to architect or contract administrator immediately</div> <div>3 Components to be fitted to the manufacturers requirements unless otherwise stated in writing</div> <div>4 All demolitions to be confirmed by SE</div> <div>5 All work to DS/SE requirements</div> <div>6 All items supply &amp; fit by contractor unless otherwise stated</div>	<div>REVISIONS</div> <div>A 13/8/14 revision following planner reaction</div>	<div>PROJECT TITLE</div> <div>54 Malden Road</div>		<div>DISCIPLINE</div> <div>A = architectural</div> <div>S = structural</div> <div>M = mechanical</div> <div>E = electrical</div>	<div>STAGE</div> <div>feas = feasibility</div> <div>des = design</div> <div>pln = planning</div> <div>bc = bdg control</div> <div>tend = tender</div> <div>con = contract</div> <div>man = manual</div>	<div>TOM YOUNG ARCHITECTS</div> <div>19 Basset St</div> <div>London NW5 4PG</div> <div>t_020 7482 6150</div> <div>m_07765 378 502</div> <div>e_thdyoung@mac.com</div>				
						new section BB (rev A)				
						discipline	series	sheet	stage	rev
						A	03	10	pln	a

copyright for this drawing belongs to Tom Young Architects and may not be assigned to any other person or organization without TYA's written agreement

<div>JOB NUMBER</div> <div>1311</div>	<div>STAGE</div> <div>AD</div>	<div>SERIES</div> <div>0 cover sheet</div> <div>1 site, roof, floor plans</div> <div>2 elevations</div> <div>3 sections</div> <div>4 enlarged plans, elevations &amp; sections details</div> <div>5 details</div> <div>6 schedules</div> <div>7 views</div> <div>8 other</div>
<div>SCALE</div> <div>1: 50@A3</div>	<div>DATE</div> <div>21/7/08</div>	<div>ISSUE</div> <div>20/7/08</div>
<div>CAD-FILE</div> <div>1311 AD.mcd</div>		