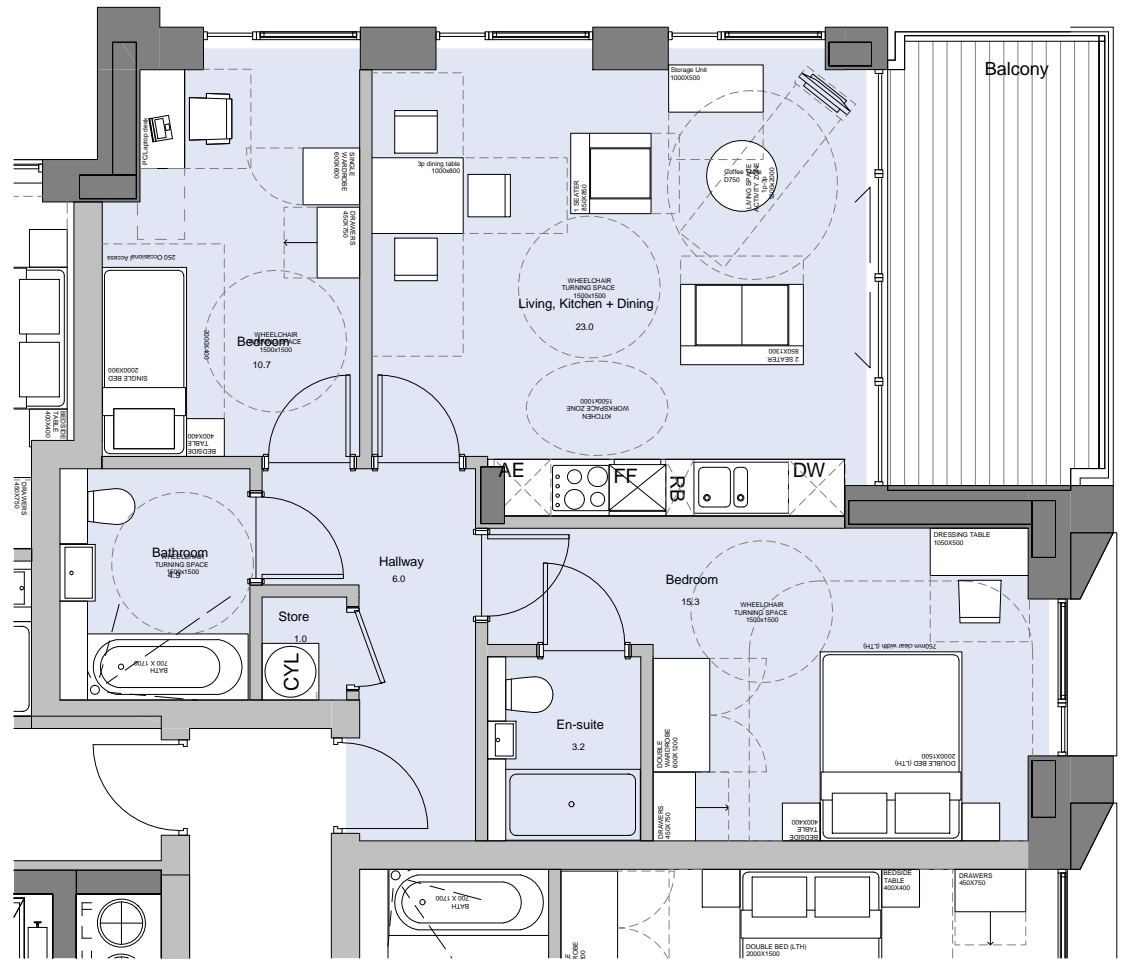


KEY MAP

General notes:
 This drawing is copyright of KSR architects. This drawing must be read in conjunction with the Designer's Risk Assessment, specification and all other relevant documentation and drawings. KSR architects accept no liability for any expense, loss or damage of whatsoever nature and however arising from any variation made to this drawing or in the execution of the work to which it relates which has not been referred to them and their approval obtained.
 Do not scale from this drawing or the digital data, only figured dimensions are to be used. For Planning refer to linear scale.
 Check all dimensions on site prior to carrying out any works - advise any discrepancy.
 Notes/Legends

Type: A05
 Tenure: Intermediate/shared ownership
 2 bed 3 person
 NIA: 66.9 sq.m (720 sq.ft)
 No. of Apartment: 2

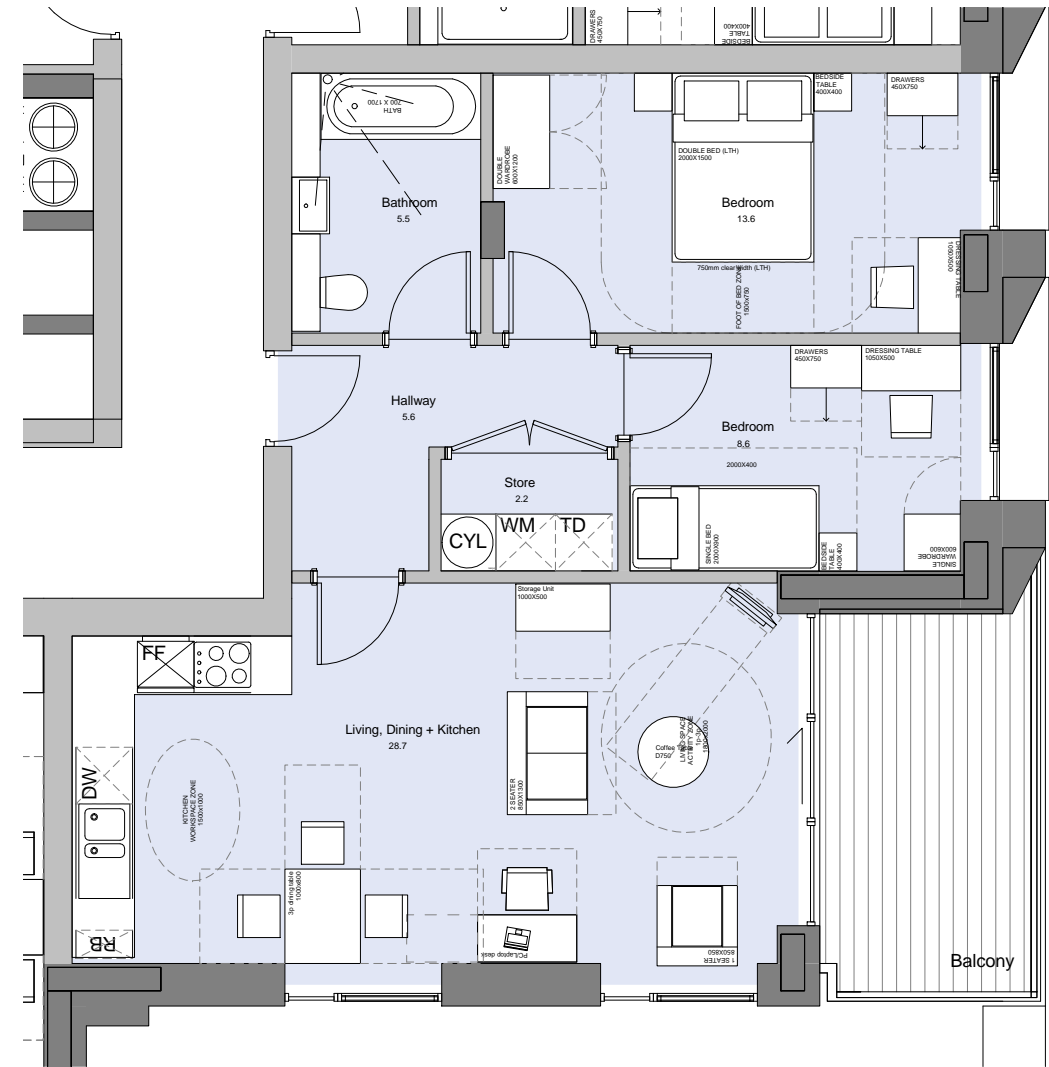
Number of Apartment Amended



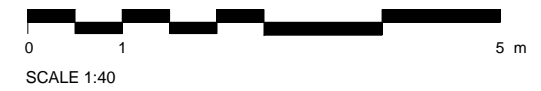
APARTMENT TYPE - A05

Type: A06
 Tenure: Intermediate/shared ownership
 2 bed 3 person
 NIA: 66.5 sq.m (716 sq.ft)
 No. of Apartment: 2

Number of Apartment Amended



APARTMENT TYPE - A06



P 2 Revised Planning Submission 07.08.14 SHY GJ
 P 1 Planning Submission 07.07.14 SHY GJ
 Rev Notes 06.06.14 By GJ

Stamp: PLANNING SUBMISSION

Key Plan

KSRARCHITECTS
 KSR Architects LLP
 14 Gonswood Street
 London NW1 0ND
 Email: info@ksrarchitects.com
 Tel: +44 (0)20 7482 5000
 Website: www.ksrarchitects.com

Project: CAMLEY STREET MIXED EMPLOYMENT AND RESIDENTIAL SCHEME
 Title: UNIT PLAN LAYOUT - TYPE A05-A06

Date: JULY 2014 Drawn By: SHY Checked: GJ

Scale: As indicated @ A1 / 1:80 @ A3

Project Ref:	Drawing No:	Revision:
CML	CML - 134	P2