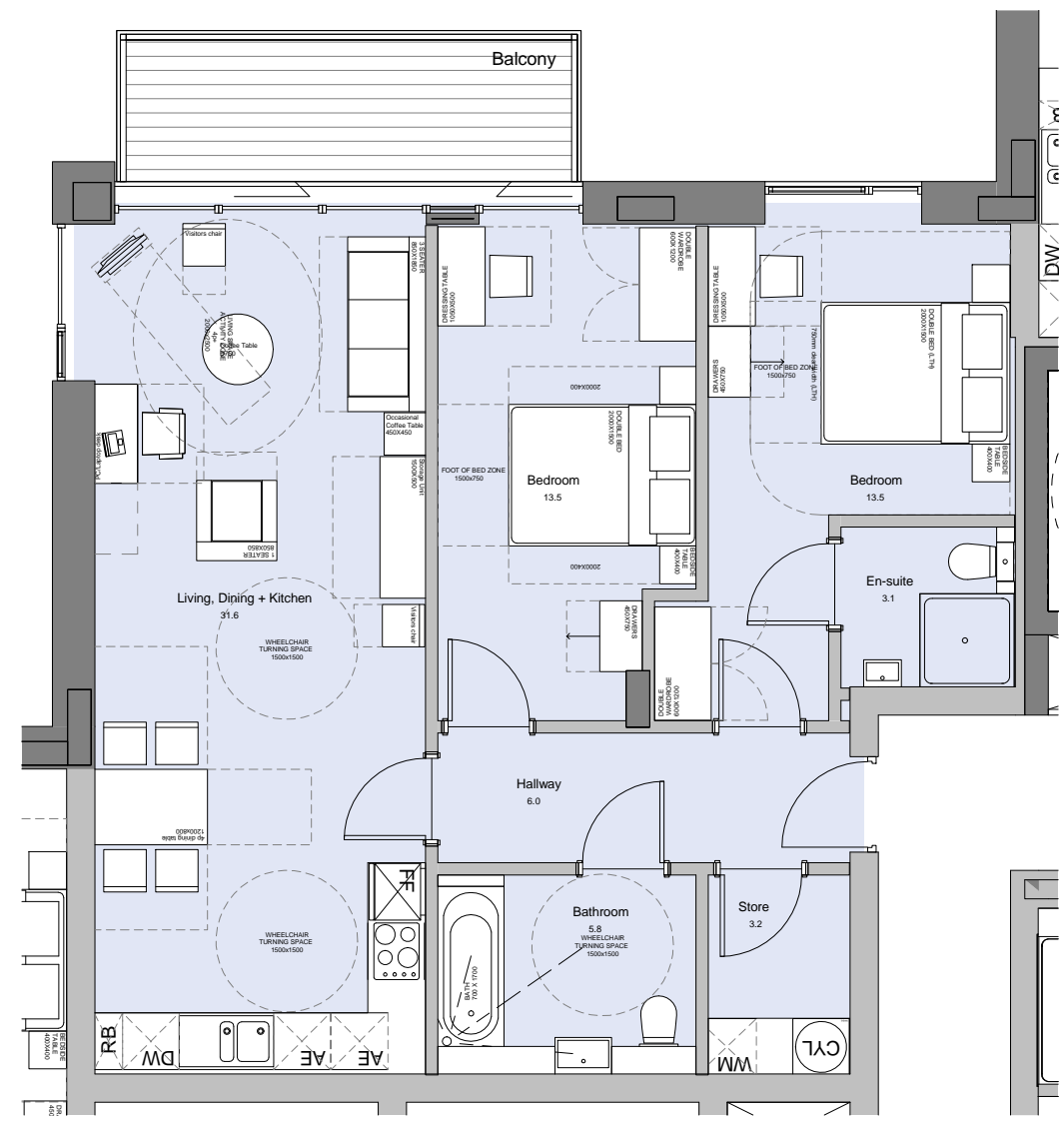


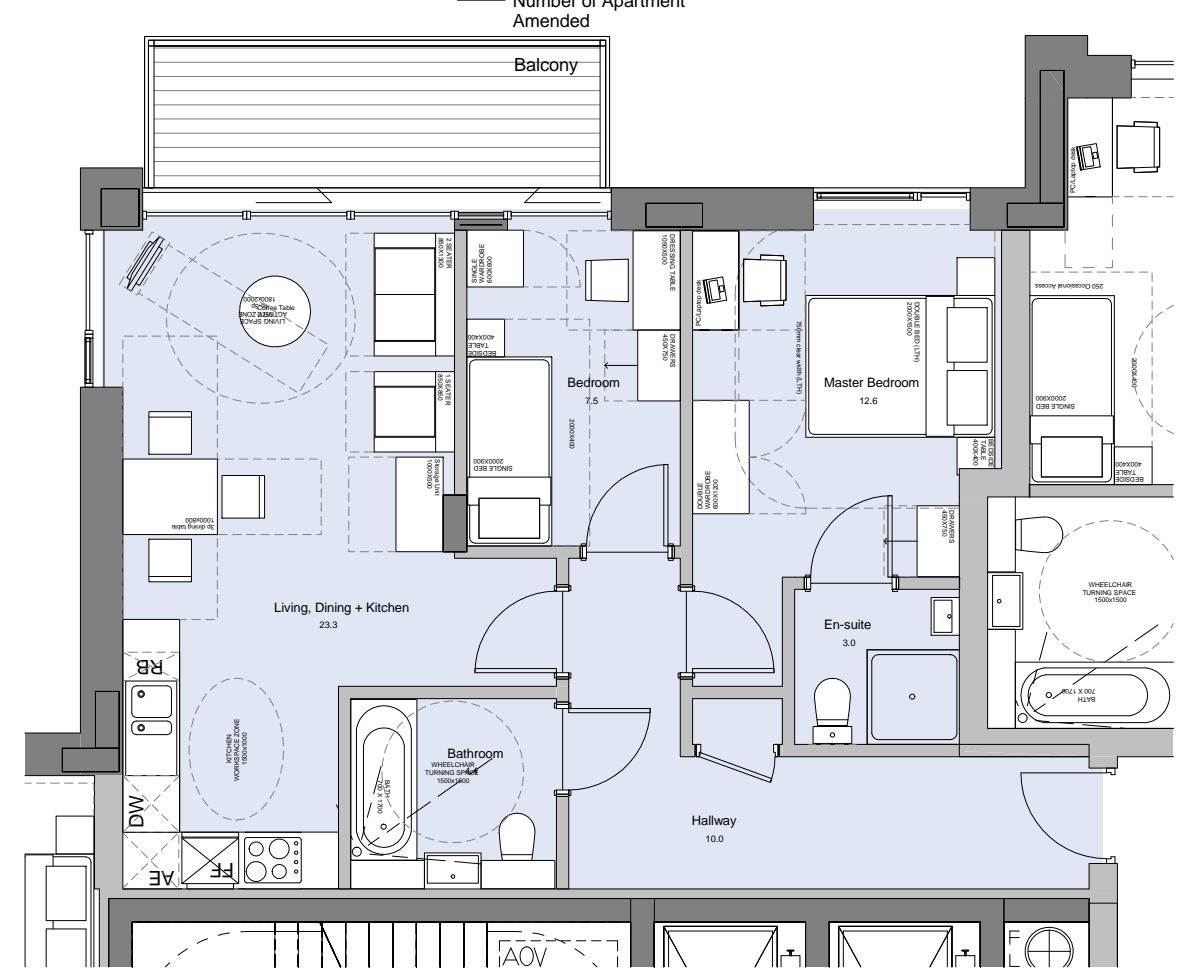
KEY MAP

Type: A03
 Tenure: Intermediate/shared ownership
 2 bed 4 person
 NIA: 80.4 sq.m (865 sq.ft)
 No. of Apartment: 3

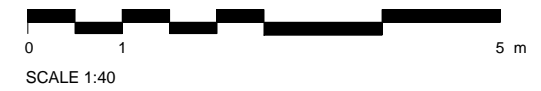


APARTMENT TYPE - A03

Type: A04
 Tenure: Intermediate/shared ownership
 2 bed 3 person
 NIA: 64.6 sq.m (695 sq.ft)
 No. of Apartment: 2



APARTMENT TYPE - A04



General notes:
 This drawing is copyright of KSR architects. This drawing must be read in conjunction with the Designer's Risk Assessment, specification and all other relevant documentation and drawings. KSR architects accept no liability for any expense, loss or damage of whatsoever nature and however arising from any variation made to this drawing or in the execution of the work to which it relates which has not been referred to them and their approval obtained.
 Do not scale from this drawing or the digital data, only figured dimensions are to be used. For Planning refer to linear scale.
 Check all dimensions on site prior to carrying out any works - advise any discrepancy
 Notes/Legends

P 2 Revised Planning Submission	07.08.14 SHY GJ
P 1 Planning Submission	01.07.14 SHY GJ
Rev Notes	06.mm.vj By CML

© KSR architects
PLANNING SUBMISSION



KSRARCHITECTS
 KSR Architects LLP
 14 Grosvenor Street
 London W1R 0ND
 T +44 (0)20 7492 5000
 www.ksararchitects.com

Project:
CAMLEY STREET MIXED EMPLOYMENT AND RESIDENTIAL SCHEME

Title:
UNIT PLAN LAYOUT - TYPE A03-A04

Date: JULY 2014	Drawn By: SHY	Checked: GJ
-----------------	---------------	-------------

Scale: As indicated @ A1 / 1:80 @ A3

Project Ref: CML	Drawing No: CML - 133	Revision: P2
------------------	-----------------------	--------------