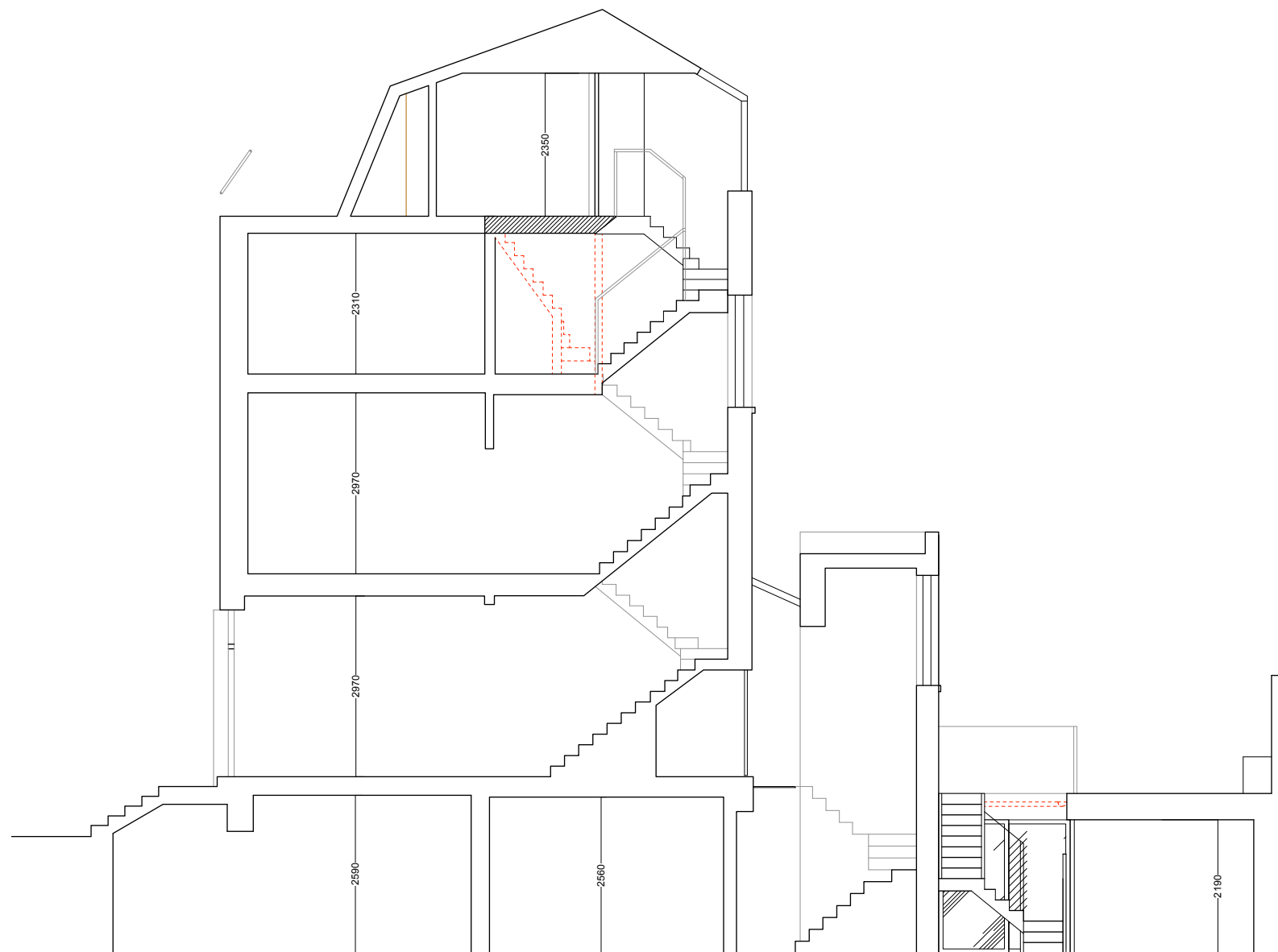
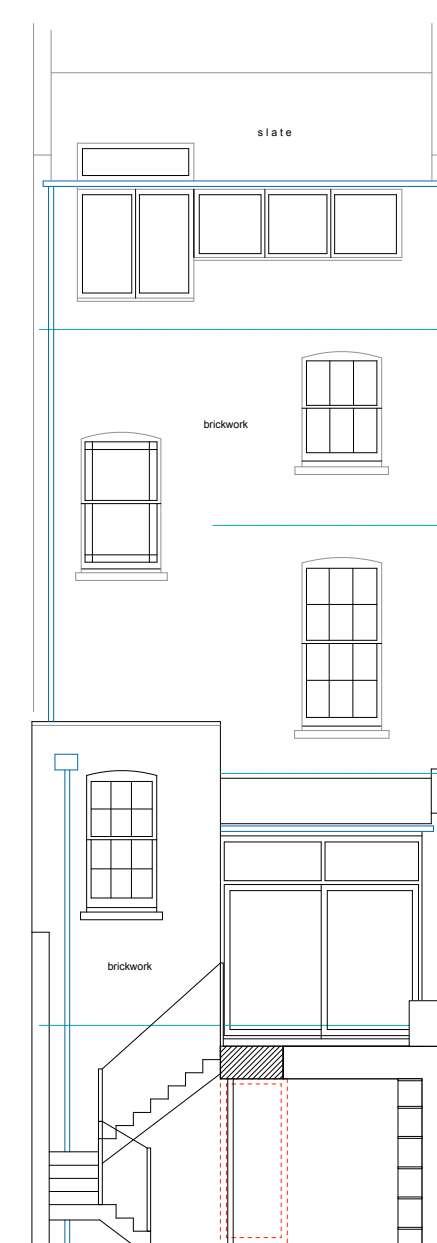
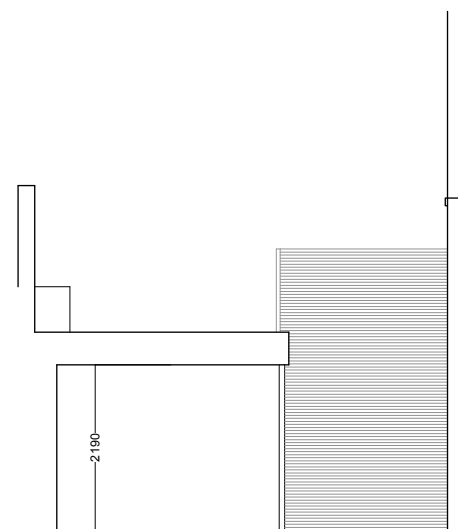


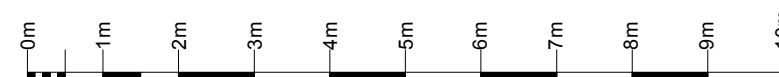
- NOTES
1. This drawing must not be scaled
 2. The contractor is to check all dimensions on site



LONGITUDINAL SECTION



REAR ELEVATION



A		Removal of Spiral Wine Cellar	15 August 2014
no.	revision	date	
dwg type		GENERAL ARRANGEMENT	
dwg status		PLANNING	
Sacks Maguire Architects 155a Regents Park Road London NW1 8BB Telephone 020 7722 9298 Fax 020 7431 4398			
Project			
10 Chamberlain Street, NW1 8XB			
Title			
Proposed Elevations and Sections			
Client			
Mr. Leigh McPherson			
scale 1:50 @ A1	drawn BC	date	August 2014
1:100 @ A3	drawing number	revision	
606	P04	A	