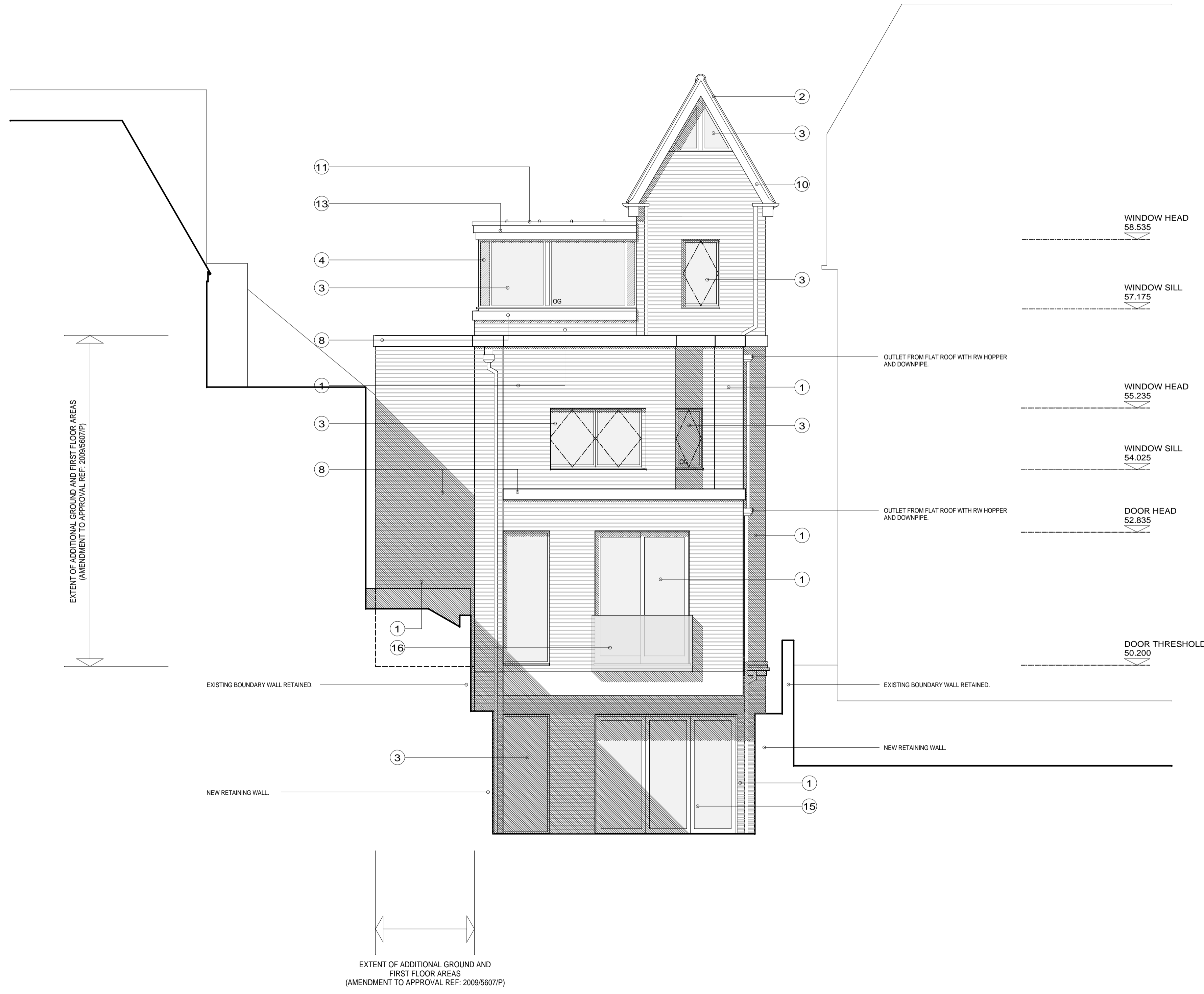


**EXTERNAL MATERIAL KEY**

①	FACING BRICKWORK
②	NATURAL SLATE PITCHED ROOF COVERING
③	DOUBLE GLAZED WINDOWS WITH DARK GREY ALUMINIUM THERMALLY BROKEN FRAMES
④	OPAQUE GLASS SPANDREL PANEL
⑧	RECON STONE SILL/COPING
⑨	POLISHED STAINLESS STEEL CANOPY
⑩	WHITE PAINTED TIMBER FASCIA/BARGEBOARD
⑪	CODE 5 LEAD FLAT ROOF COVERING
⑫	HARDWOOD ENTRANCE DOOR
⑬	DARK GREY ALUMINIUM FASCIA
⑭	BLACK UPVC HALF-ROUND GUTTER
⑮	DOUBLE GLAZED SLIDING DOOR/SCREEN WITH DARK GREY ALUMINIUM THERMALLY BROKEN FRAMES
⑯	FRAMELESS GLASS BALUSTRADING (LAMINATED SAFETY GLASS)
SG	INDICATES SAFETY GLASS TO BS 6206
OG	INDICATES OBSCURE GLAZING (TO BATHROOMS)

RIDGE	61.750
GLAZING SILL	60.250
WINDOW HEAD	58.535
WINDOW SILL	57.175
TOP OF COPING	56.650
SECOND FLOOR FFL	56.122
TOP OF COPING	53.650
FIRST FLOOR FFL	53.137
FLAT ROOF	50.200
GROUND FLOOR FFL	50.175
FINISHED GROUND LEVEL	46.810
LOWER GRD FLOOR FFL	46.910



proposed rear elevation